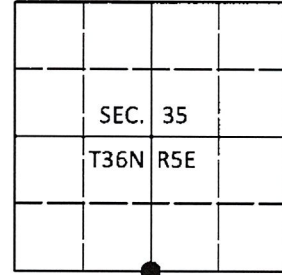


U.S. PUBLIC LAND SURVEY MONUMENT RECORD

Note: This form is intended and designed to fulfill all requirements of Wisconsin Administrative Code, Chapter A-E 7.08 U.S. Public Land Survey Monument Record (3)(a-1).

(a) CORNER LOCATION
 1/4 Cor. of Secs. 2 & 35
 Township 35 & 36 North
 Range 5 East of the 4th P.M.
 Town of Little Rice & Wilson
 County of Oneida & Lincoln

WISCORS - Oneida County
 N: 134,810.82 USft
 E: 157,564.57 USft
 Datum: NAD 83(2011)
 GNSS Method: RTN - Direct
 GNSS Control: WISCORS VRS



(b) HISTORY OF ORIGINAL CORNER ESTABLISHMENT

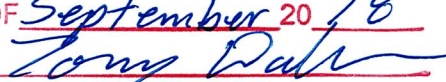
Original Surveyor: _____ Original Accessories: _____
 Date of Survey Commenced: _____ See previous USPLS Monument Record
 Completed: _____

(b)(f)(g)(h) Description of monument found at this corner and if it was accepted, state all evidence (material, testimonial, occupational, plats, records, other monuments) used as a basis for accepting. If not accepted or if nothing was found, state evidence used as basis for establishing location. If re-established through lost corner proportionate methods, indicate all monuments, distances and directions used to establish. Indicate type of monument and sign post found or set.

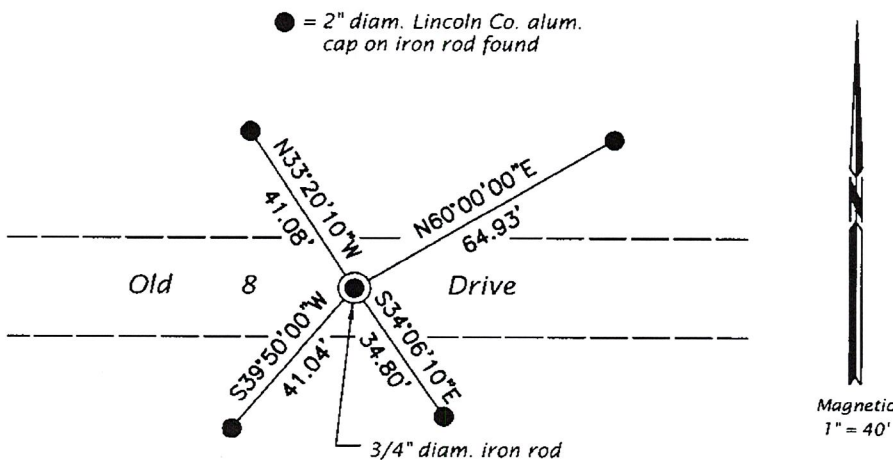
This is a perpetuation of a previous USPLS Monument Record by Darren B. Krzanowski, RLS dated March 23, 2012 and filed in the office of the Oneida County Register of Deeds. A complete history of the corner can be found on the previous monument record. I accept the previous location as a true and faithful perpetuation or reestablishment of the original corner location and further perpetuate it as follows.

August 23, 2018: I found and accepted the base of the record Berntsen "breakaway" aluminum monument. In its place, I set a 3/4" diam., 24" long iron rod buried 8" beneath the road surface centerline. I found or established accessories as shown below. I found a white vinyl sign post bearing North, 31.5 ft.

The coordinate value shown has been verified by at least one of the following methods: 1) comparison to a previously GPS determined published value; 2) the value is the average of two or more GPS observations at a markedly different time; 3) one or more distances were measured back to the GPS observed corner from temporary GPS observed offset locations.

**RECEIVED BY LINCOLN COUNTY
 SURVEYOR THIS 14TH DAY
 OF September 20 / 18

 COUNTY SURVEYOR**

(c)(d)(e) Plan view of corner with ties to at least 4 witness monuments. If in disagreement with previously established corner, show the distances between the two corners and also indicate the ties to the disputed.



REGISTER OF DEEDS OFFICE
 ONEIDA COUNTY
 FILED

SEP 10 2018

KYLE J. FRANSON
 REGISTER OF DEEDS

(i) I, Jeffrey W. Austin, Professional Land Surveyor No. S-1885, hereby certify that the corner location on this record was determined by me or under my direction and control and that this U.S. Public Land Survey Monument Record is correct and complete to the best of my knowledge and belief.

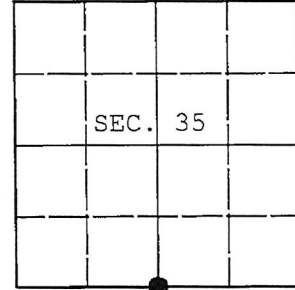
 Signature Date SEP. 5, 2018

A-19

U.S. PUBLIC LAND SURVEY MONUMENT RECORD

Note: This form is intended and designed to fulfill all requirements of Wisconsin Administrative Code, Chapter A-E 7.08 U.S. Public Land Survey Monument Record (3) (a) (b) (c) (d) (e) (f) (g) (h) (i). An additional sheet may be added if necessary to conform with said requirements.

(a) CORNER LOCATION: WISCRS - Oneida County
1/4 Cor. of Secs. 2 & 35 N: 134,810.82 USft
Township 35 & 36 North E: 157,564.57 USft
Range 5 East of the 4th P.M. Datum: NAD 1983(2011)
Town of Little Rice County of Oneida



(b) HISTORY OF ORIGINAL CORNER ESTABLISHMENT

Original Surveyor: Original Accessories:
Date of Survey: Commenced:
Completed:

(b) (f) (g) (h) Description of monument found at this corner and if it was accepted, state all evidence (material, testimonial, occupational, plats, records, other monuments) used as a basis for accepting. If not accepted or if nothing was found, state evidence used as basis for establishing location. If re-established through lost corner proportionate methods, indicate all monuments, distances and directions used to establish. Indicate type of monument and sign post found or set.

NOTE: This is a perpetuation of a previous USPLS Monument Record by Darren B. Krzanowski, RLS dated March 23, 2012 and filed in the office of the Oneida County Register of Deeds. A complete history of the corner can be found on the previous monument record. I accept the previous location as a true and faithful perpetuation or reestablishment of the original corner location and further perpetuate it as follows.

April 3, 2016: I found and accepted the record monument, a 4" diam. Lincoln Co. Berntsen aluminum monument 3" beneath the centerline of Old 8 Road. The existing accessories were found in substantial agreement with the record and were not remeasured as the sole purpose of this work is to report the coordinates of the corner point.

The coordinates shown were derived from two independent RTK observations of the corner point and are referenced to the WISCORS GNSS Network.

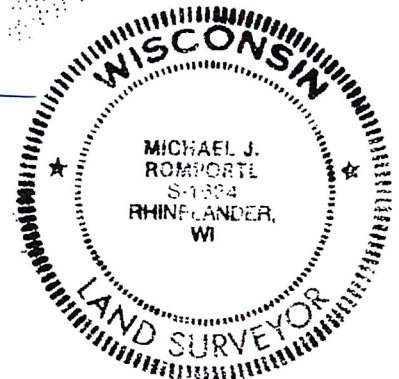
(c) (d) (e) Plan view of corner with ties to at least 4 witness monuments. If in disagreement with previously established corner, show the distances between the two corners and also indicate the ties to the disputed.

REGISTER OF DEEDS OFFICE
ONEIDA COUNTY
FILED

DEC 28 2016

AT O'CLOCK M
KYLE J. FRANSON
REGISTER OF DEEDS

RECEIVED BY LINCOLN COUNTY
SURVEYOR THIS 17TH DAY
OF January 20 18
Tony Dahl
COUNTY SURVEYOR



(i) I, Michael J. Romportl, Professional Land Surveyor No. S-1624, hereby certify that the corner location on this record was determined by me or under my direction and control and that this U.S. Public Land Survey Monument Record is correct and complete to the best of my knowledge and belief.

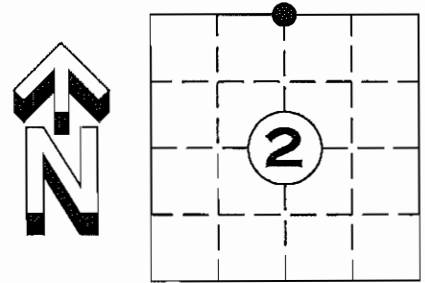
Signature: Michael J. Romportl Date: 12/23/2016

Handwritten note: 12-19

U.S. PUBLIC LAND SURVEY MONUMENT RECORD

NOTE: THIS FORM IS INTENDED AND DESIGNED TO FULFILL ALL REQUIREMENTS OF WISCONSIN ADMINISTRATIVE CODE CHAPTER A-E 7.08 U.S. PUBLIC LAND SURVEY MONUMENT RECORD (3) (a)(b)(c)(d)(e)(f)(g)(h)(i). AN ADDITIONAL SHEET MAY BE ADDED IF NECESSARY TO CONFIRM WITH SAID REQUIREMENTS.

(a) CORNER LOCATION: $N\frac{1}{4}$ CORNER
 SECTION 2, TOWNSHIP 35 NORTH, RANGE 5 EAST
 TOWN OF WILSON, LINCOLN COUNTY
 LINCOLN COUNTY COORDINATES:
 NORTHING: 259274.412
 EASTING: 356956.296

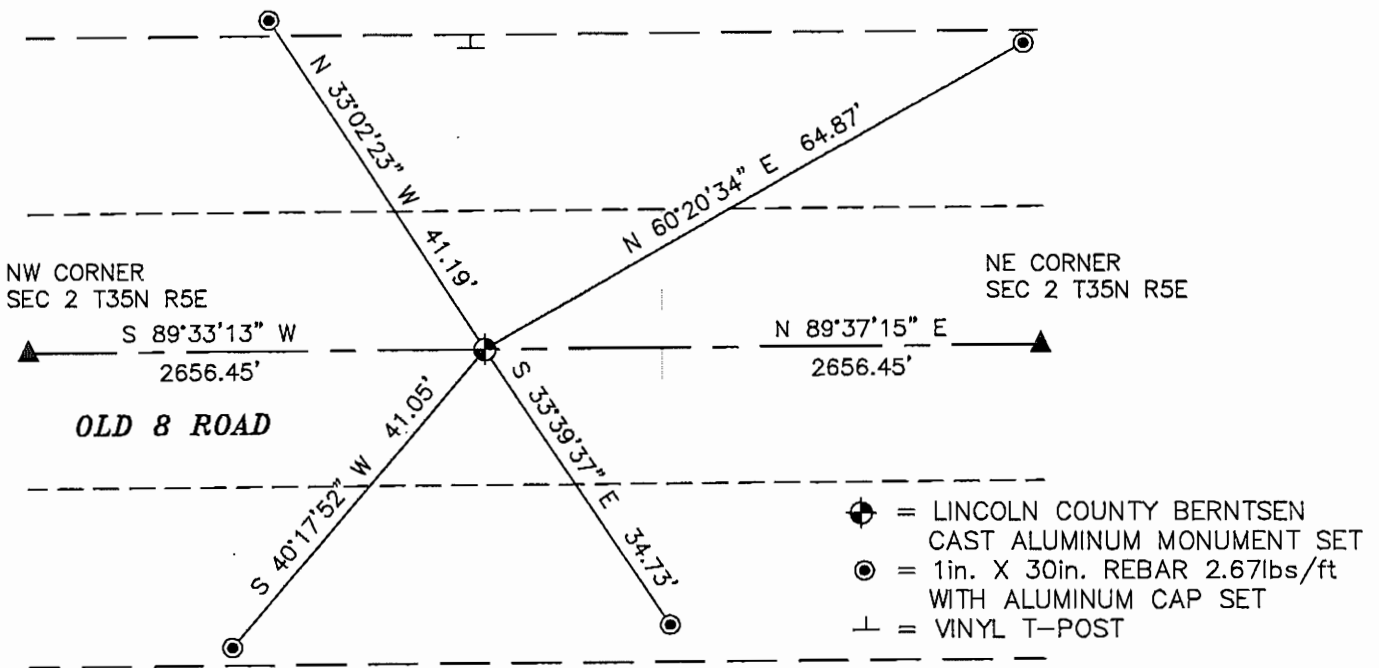


(b) HISTORY OF ORIGINAL CORNER:
 ORIGINAL SURVEYOR:
 ALFRED MILLARD AUG 1860 – SEPT 1860
 Y BIRCH 10 N 87° W 16 LINKS
 TAMARAC 10 S 60° E 11 LINKS

(f)(g)(h) DESCRIPTION OF MONUMENT FOUND AT THIS CORNER AND IF IT WAS ACCEPTED STATE ALL EVIDENCE (MATERIAL, TESTIMONIAL, OCCUPATIONAL, PLATS, RECORDS, OTHER MONUMENTS) USED AS A BASIS FOR ESTABLISHING LOCATION. IF REESTABLISHED THROUGH LOST CORNER PROPORTIONATE METHODS, INDICATE ALL MONUMENTS, DISTANCES, AND DIRECTIONS USED TO ESTABLISH. INDICATE TYPE OF MONUMENT AND SIGN POST FOUND OR SET.

21 MARCH 2012: SEARCH OF AREA REVEALED NO EVIDENCE OF CORNER OR ITS ACCESSORIES. SET A LINCOLN COUNTY CAST BERNTSEN ALUMINUM MONUMENT AT EQUAL DISTANCE BETWEEN THE NORTHEAST CORNER AND NORTHWEST CORNER OF SECTION 2 AND ON CENTERLINE OF OLD 8 ROAD. MONUMENT IS $\pm 0.5'$ BELOW GRADE.

(c)(d)(e) PLAN VIEW OF CORNER WITH TIES TO AT LEAST FOUR WITNESSES. IF IN DISAGREEMENT WITH PREVIOUSLY ESTABLISHED CORNER, SHOW THE DISTANCE BETWEEN THE TWO CORNERS AND ALSO INDICATED THE TIE TO THE DISPUTED CORNER.



- = LINCOLN COUNTY BERNTSEN CAST ALUMINUM MONUMENT SET
- = 1in. X 30in. REBAR 2.67lbs/ft WITH ALUMINUM CAP SET
- = VINYL T-POST

RECEIVED BY LINCOLN COUNTY
 SURVEYOR THIS 30TH DAY
 OF March 20 12
Tom Dahl
 COUNTY SURVEYOR

I DARREN B. KRZANOWSKI, REGISTERED LAND SURVEYOR NO. 2663, HEREBY CERTIFY THAT THE CORNER LOCATION ON THIS RECORD WAS REFERENCED BY ME OR UNDER MY DIRECTION AND CONTROL AND THAT THIS U.S. PUBLIC LAND SURVEY MONUMENT RECORD IS COMPLETE TO THE BEST OF MY KNOWLEDGE AND BELIEF.

Darren Krzanowski
 DARREN B. KRZANOWSKI RLS 2663
 DATED THIS 23RD DAY OF MARCH 2012



INDEX NO. T35N R5E A19









