

At _____ O'Clock _____ M
THOMAS H. LEIGHTON
REGISTER OF DEEDS

This form is intended to fulfill the requirements of Chapter A-E7.08 (3)(a) thru (i) U.S. Public Land Survey Monument Location Record, Wisconsin Administrative Code. Use the reverse side of form for continuation.

U.S. PUBLIC LAND SURVEY MONUMENT LOCATION RECORD

Recorders Data

USPLS CORNER: SE SECTION: 32 TOWNSHIP: 36 NORTH RANGE: 5 EAST

NAME OF WATERWAY FOR M.C. CORNER : N/A SECTION LINE: N/A

(CITY)(VILLAGE)(TOWN) OF: LITTLE RICE COUNTY OF: ONEIDA

Description of monument found or placed and all other evidence used as the basis for monument location; including monuments and measurements required if the corner location was reestablished by lost corner proportionate methods. Also indicate name of the original surveyor, original survey date and the corner monument, bearing trees, witness or other reference monuments established, including measured bearing and distance ties, from available survey records.

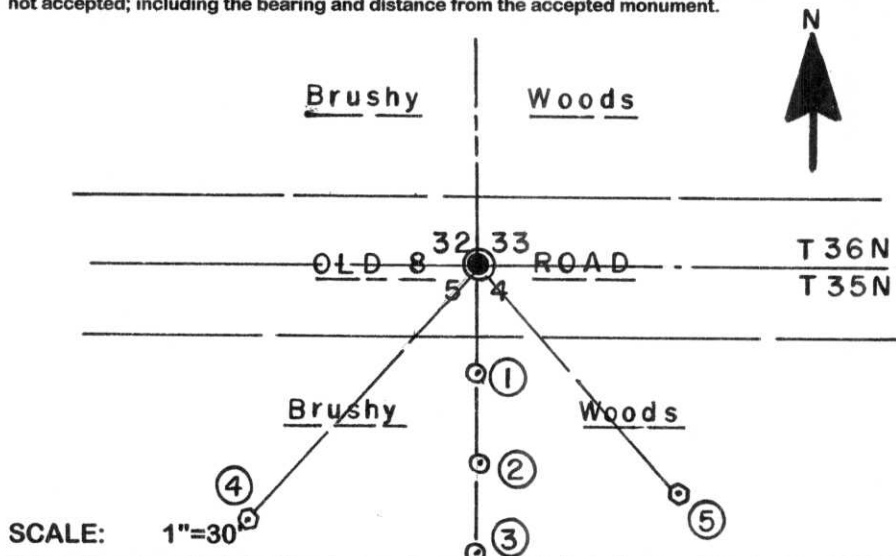
In September 1860, Alfred Millard/GLO set a wood post as the original corner and noted OBTs: an 8" Hemlock S10°W 2 links, an 8" Hemlock N15°W 18 links, a Maple S25°E 2 links and a Cedar N45°E 8 links; all are now obliterated within roadway.

On a U.S. Public Land Survey Monument Location Record filed May 3, 1990 in Oneida County records, Lester J. Schmit/RLS 1192 notes that in March 1989 he found a PK nail on the centerline of old Highway 8 at this corner and a 6" dia. green/white wood location marker post 32.75' South, now a rotted off 6" high stub; and that he set a Berntsen aluminum monument in the roadway at the PK location and noted new ties: a 7" Bw N25°W 49.87', now a 5' high dead stub; a 5" Soft Maple N50°E 42.07', now a double 9" Mr with upper blaze open and lower blaze nearly shut N53°E nearly at record distance; a 3/4" dia. iron pipe set South 17.55' and a 3/4" dia. iron pipe set South 32.15', both found OK and used for new ties below.

I found the cast aluminum monument OK about 2" below existing gravelled roadway and a standard white poly 'T' marker post 18.8' North which I flagged blaze orange.

This recovery completed September 8, 2006 at the request of Oneida County surveyor Michael Romporti; there were no direct witnesses.

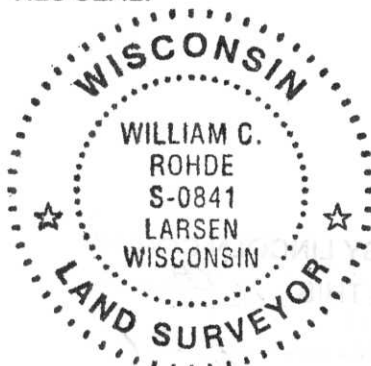
Plan view map of monument location with bearing and distance ties to a minimum of four(4) described witness or reference monuments of concrete, natural stone, iron, live bearing trees or equivalent material. If applicable, also show a minimum of two(2) bearing and distance ties to any other monument found and not accepted; including the bearing and distance from the accepted monument.



- WITNESS MONUMENT TIES:**
- ① Old uncapped 3/4" dia. iron pipe found 5" up South 17.52'.
 - ② Old uncapped 3/4" dia. iron pipe found 4" up South 32.19'.
 - ③ 5/8" dia. x 24" long rebar set with yellow poly Ref Mark cap flush South 45.85'.
 - ④ New NW 6" trunk of double Sb BT S42°W 54.32'.
 - ⑤ New 5.5" Mr BT S42°E 47.88'.
- I flagged witness monuments and BTs.

Unless otherwise indicated, all bearing tree ties are to a .25" dia. by 2.5" long PK nail with a 1.25" dia. steel washer driven into unblazed right face and a .25" dia. by 2.5" long PK nail with a 2" dia. steel washer stamped BT is also driven into unblazed face of bearing tree at DBH; the basis for measured bearings is by compass to nearest degree and all tie distances are measured horizontal by steel tape corrected to nearest 1/100th feet at standard temperature of 68° F.

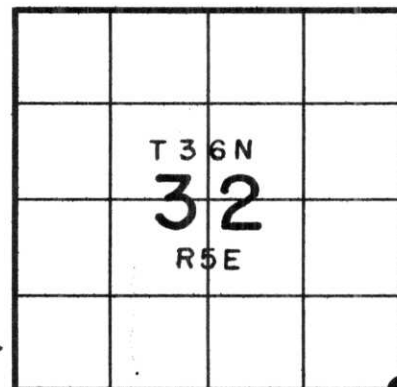
RLS SEAL:



LAND SURVEYOR CERTIFICATE:

I, William C. Rohde, hereby certify that I am duly licensed as a Professional Land Surveyor in the State of Wisconsin; that this USPLS monument location was determined by me and/or under my direct supervision and control; and that this U.S. Public Land Survey Monument Location Record is true and correct to the best of my knowledge and belief.

Signed: *William C. Rohde*
William C. Rohde RLS 841



SECTION LOCATION MAP
INDEX NO. _____

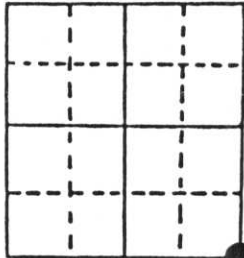
A-9

U.S. PUBLIC LAND SURVEY MONUMENT RECORD

Note: This form is intended and designed to fulfill all requirements of Wisconsin Administrative Code, Chapter A-E 7.08 U.S. Public Land Survey Monument Record (3) (a) (b) (c) (d) (e) (f) (g) (h) (i). An additional sheet may be added if necessary to conform with said requirements.

(a) Corner location: Township 36 North
 Range 5 East
 Town _____ of Little Rice
 County of Oneida

5-35-5
NE cr



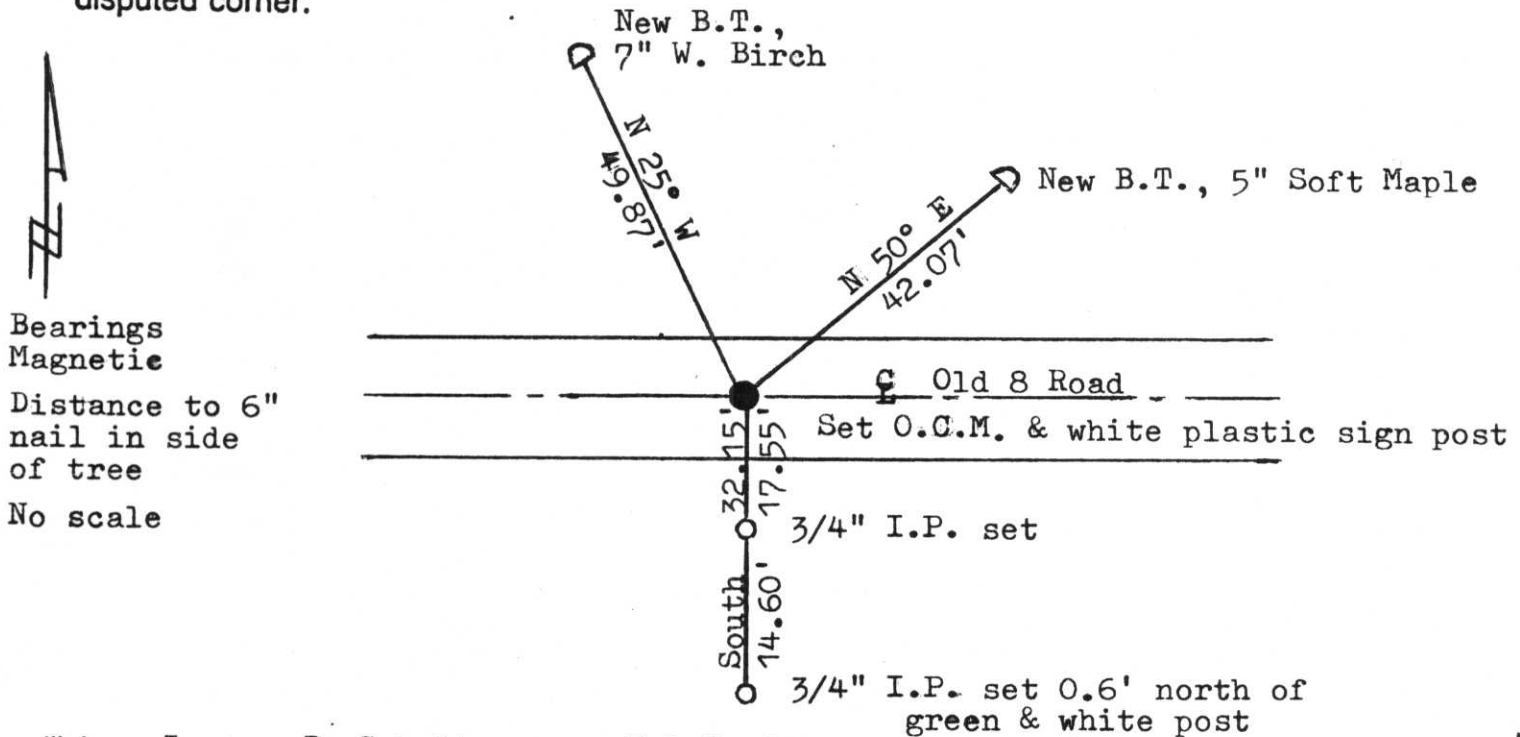
Section 32

(b) (f) (g) (h) Description of monument found at this corner and if it was accepted, state all evidence (material, testimonial, occupational, plats, records, other monuments) used as a basis for accepting, not accepted or if nothing was found, state evidence used as basis for establishing location. reestablished through lost corner proportionate methods, indicate all monuments, distances and directions used to establish. Indicate type of monument found or set and sign post

1 September 1860, Orig. cor. estab. by Alfred Millard West between 4 & 33.....
 80.00 set post for cor. to Sections 4, 5, 32 & 33, B.T.s Hemlock 8 S 10 W 2;
 Hemlock 8 N 15 W 18; Maple S 25 E 2 & Cedar N 45 E 8

March 1989, I found a P.K. Nail in the centre-line of Old 8 Road, with a 6" diameter green & white wood location post 32.75' south of corner, I set a 2" x 30" Oneida County Capped Monument for the corner and witnessed it as shown below.

(c) (d) (e) Plan view of corner with ties to at least 4 witness monuments. If in disagreement with previously established corner, show the distances between the two corners and also indicate the ties to the disputed corner.



(i) I, Lester J. Schmit R.L.S. 1192

(type or print name) certify that the corner location on this record was determined by me or under my direction and control and that this U.S. Public Land Survey Monument Record is correct and complete to the best of my knowledge and belief.

Lester J. Schmit
 Signature

3 May 1990
 Date



Index No. 4-9

U.S. PUBLIC LAND SURVEY MONUMENT RECORD

Note: This form is intended and designed to fulfill all requirements of Wisconsin Administrative Code, Chapter A-E 7.08 U.S. Public Land Survey Monument Record (3) (a) (b) (c) (d) (e) (f) (g) (h) (i). An additional sheet may be added if necessary conform with said requirements.

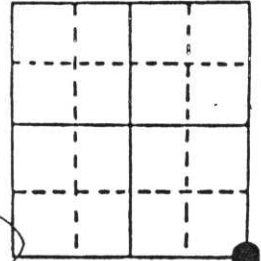
(a) Corner location: Township 36 North

Range 5 East

Town of Little Rice

County of Oneida

5-35-5
NE 1/4



Section 32

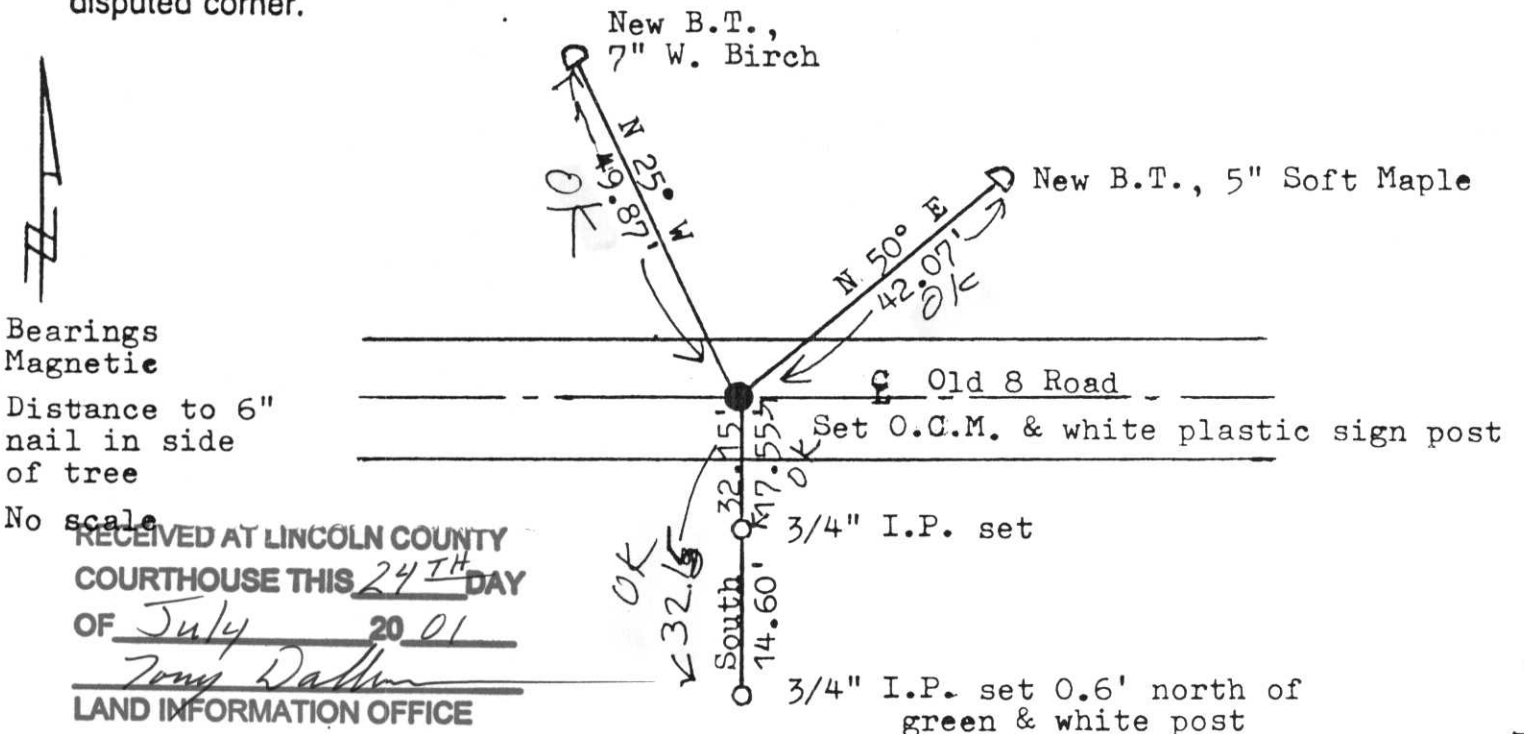
FD ONEIDA
CO. MON

(b) (f) (g) (h) Description of monument found at this corner and if it was accepted, state all evidence (material, testimonial, occupational, plats, records, other monuments) used as a basis for accepting. not accepted or if nothing was found, state evidence used as basis for establishing location. reestablished through lost corner proportionate methods, indicate all monuments, distances and directions used to establish. Indicate type of monument found or set and sign post.

1 September 1860, Orig. cor. estab. by Alfred Millard West between 4 & 33.....
80.00 set post for cor. to Sections 4, 5, 32 & 33, B.T.s Hemlock 8 S 10 W 2;
Hemlock 8 N 15 W 18; Maple S 25 E 2 & Cedar N 45 E 8

March 1989, I found a P.K. Nail in the centre-line of Old 8 Road, with a 6" diameter green & white wood location post 32.75' south of corner, I set a 2" x 30" Oneida County Capped Monument for the corner and witnessed it as shown below.

(c) (d) (e) Plan view of corner with ties to at least 4 witness monuments. If in disagreement with previously established corner, show the distances between the two corners and also indicate the ties to the disputed corner.



RECEIVED AT LINCOLN COUNTY
COURTHOUSE THIS 24TH DAY
OF July 20 01
Tom Dallon
LAND INFORMATION OFFICE

(i) I, Lester J. Schmit R.L.S. 1192
(type or print name) certify that the corner location on this record was determined by me or under my direction and control and that this U.S. Public Land Survey Monument Record is correct and complete to the best of my knowledge and belief.

Lester J. Schmit 3 May 1990
Signature Date



Index No. A-9