

At \_\_\_\_\_ O'Clock \_\_\_\_\_ M  
**THOMAS H. LEIGHTON**  
REGISTER OF DEEDS

This form is intended to fulfill the requirements of Chapter A-E7.08 (31.01) of the Wisconsin Land Survey Monument Location Record, Wisconsin Administrative Code. Use the reverse side of form for continuation.

**U.S. PUBLIC LAND SURVEY MONUMENT LOCATION RECORD**

Recorders Data

USPLS CORNER: **SW** SECTION: **32** TOWNSHIP: **36 NORTH** RANGE: **5 EAST**  
 NAME OF WATERWAY FOR M.C. CORNER : **N/A** SECTION LINE: **N/A**  
 (CITY)(VILLAGE)(TOWN) OF: **LYNNE** COUNTY OF: **ONEIDA**

Description of monument found or placed and all other evidence used as the basis for monument location; including monuments and measurements required if the corner location was reestablished by lost corner proportionate methods. Also indicate name of the original surveyor, original survey date and the corner monument, bearing trees, witness or other reference monuments established, including measured bearing and distance ties, from available survey records.

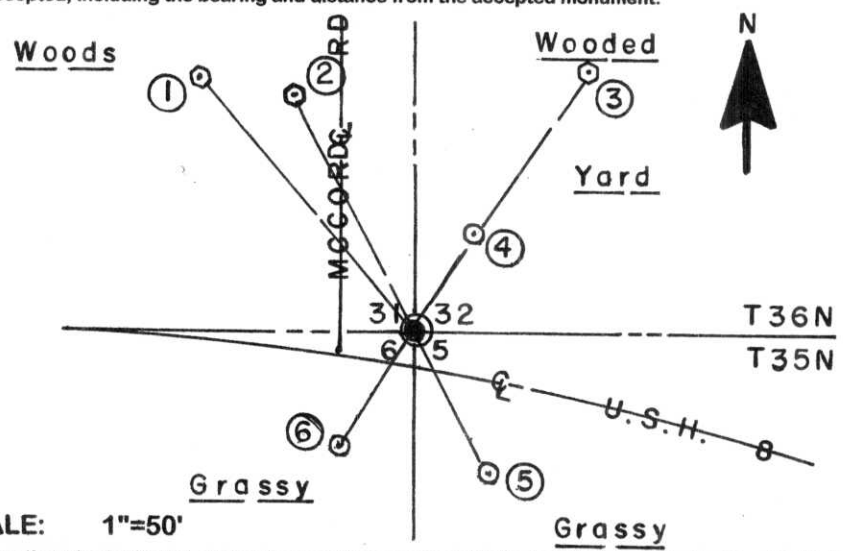
In September 1860, Alfred Millard/GLO set a wood post as the original corner and noted OBTs: a 25" Hemlock N58°W 16 links, a 16" Hemlock S72°W 30 links, an 8" Fir S28°E 8 links and an 8" Spruce N71°E 39 links; all are now obliterated within highway roadway.

In April 1989, Lester J. Schmit/RLS 1192 retraced Wisconsin D.O.T. right-of-way survey for U.S. Highway 8 and found an iron at corner per RW map 11' North of highway centerline, set a PK nail in pavement at corner location and referenced to new witnesses, an 8" Pr N43°W 87.15', a 11" Pw N29°E 81.98', a 3/4" dia. iron rod set S32°W 35.59' and a 3/4" dia. iron rod set S30°E 41.40' per U.S. Public Land Survey Monument Record filed 05/03/1990; all found OK and used for new ties noted below.

I found an old 1/4" dia. by 1" long PK nail in pavement at this corner per record ties and replaced it with a 1/4" dia. x 2.5" long Mag nail driven flush with pavement for new ties. Corner falls 9.8' North of the centerline of existing U.S.H. 8 blacktop pavement mat and 19' East of the centerline of existing McCord Road blacktop pavement mat North of the corner. New rebar witness monuments set about 18" behind existing concrete curb radii on a right line with Wild T1 Theodolite thru corner from old iron rod witness monuments found SW and SE of corner.

This corner recovery completed September 8, 2006 at the request of Oneida County surveyor Michael Romportl; there were no direct witnesses other than vehicular drive-bys.

Plan view map of monument location with bearing and distance ties to a minimum of four(4) described witness or reference monuments of concrete, natural stone, iron, live bearing trees or equivalent material. If applicable, also show a minimum of two(2) bearing and distance ties to any other monument found and not accepted; including the bearing and distance from the accepted monument.



- WITNESS MONUMENT TIES:**
- ① Old 12" Pr BT N40°W 86.93' to PK/washer in left face.
  - ② 5/8" dia. x 24" long rebar set flush N28°W 69.22'.
  - ③ Old 17" Pw BT with lower blaze plain N34°E 81.74' to PK/W 68" up in right face.
  - ④ 5/8" dia. x 24" long rebar set flush N32°E 29.42'.
  - ⑤ Old 3/4" dia. iron rod found 8" down in roadway shoulder S28°E 41.40'.
  - ⑥ Old 3/4" dia. iron rod found 7" down in roadway shoulder S32°W 35.59'.
- Standard white poly 'T' marker post found S06°W 38' from corner.

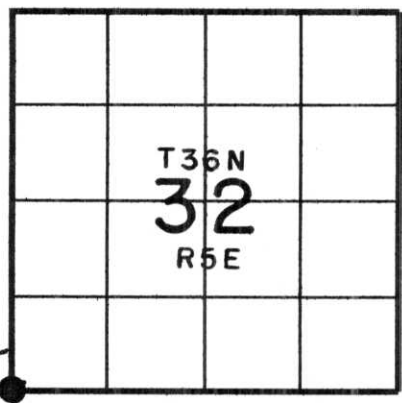
SCALE: 1"=50'

Unless otherwise indicated, all bearing tree ties are to a .25" dia. by 2.5" long PK nail with a 2" dia. steel washer driven into unblazed right face and a .25" dia. by 2.5" long PK nail with a 2" dia. steel washer stamped BT is also driven into unblazed face of bearing tree at DBH; the basis for measured bearings is by compass to nearest degree and all tie distances are measured horizontal by steel tape corrected to nearest 1/100th feet at standard temperature of 68° F.



**LAND SURVEYOR CERTIFICATE:**  
 I, William C. Rohde, hereby certify that I am duly licensed as a Professional Land Surveyor in the State of Wisconsin; that this USPLS monument location was determined by me and/or under my direct supervision and control; and that this U.S. Public Land Survey Monument Location Record is true and correct to the best of my knowledge and belief.

Signed: *William C. Rohde*  
 William C. Rohde RLS 841



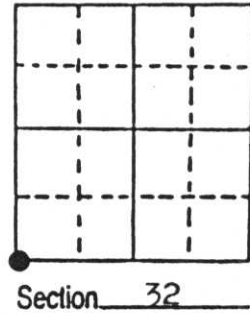
A-5

# U.S. PUBLIC LAND SURVEY MONUMENT RECORD

Note: This form is intended and designed to fulfill all requirements of Wisconsin Administrative Code, Chapter A-E 7.08 U.S. Public Land Survey Monument Record (3) (a) (b) (c) (d) (e) (f) (g) (h) (i). An additional sheet may be added if necessary conform with said requirements.

(a) Corner location: Township 36 North  
 Range 5 East  
 Town Little Rice  
 County Oneida

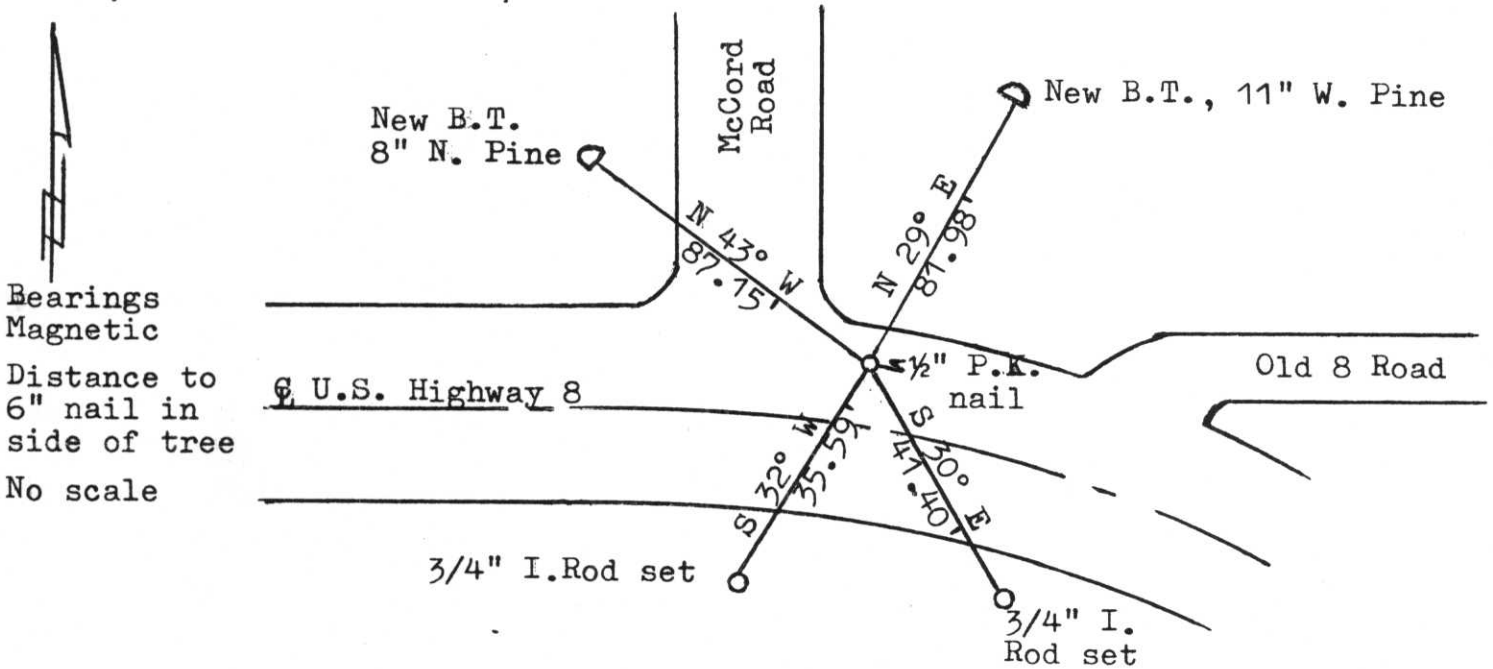
5-35-5  
NW 1/4



(b) (f) (g) (h) Description of monument found at this corner and if it was accepted, state all evidence (material, testimonial, occupational, plats, records, other monuments) used as a basis for accepting. not accepted or if nothing was found, state evidence used as basis for establishing location. reestablished through lost corner proportionate methods, indicate all monuments, distances and directions used to establish. Indicate type of monument found or set and sign post.

2 September 1860, Orig. cor. estab. by Alfred Millard West between 5 & 32....  
 80.00 set post corner to Sections 5, 6, 31 & 32, B.T.s Hemlock 25 N 58 W 16;  
 Hemlock 16 S 72 W 30; Fir 8 S 28 E 8 & Spruce 8 N 71 E 39  
 November 1934, On route location survey for new U.S. Highway 8, found Section  
 corner in centre-line of Old U.S. Highway 8.  
 April 1989, Using stationing along centre-line new U.S. Highway 8 from D.O.T.  
 map, located iron per station call and 11' north of centre-line. Iron is  
 below new concrete surface. I accepted the iron for the corner and placed  
 a 1/2" P.K. Nail at the surface of the road and witnessed it as shown below.

(c) (d) (e) Plan view of corner with ties to at least 4 witness monuments. If in disagreement with previously established corner, show the distances between the two corners and also indicate the ties to the disputed corner.



(i) I, Lester J. Schmit R.L.S. 1192  
 (type or print name) certify that the corner location on this record  
 was determined by me or under my direction and control and that  
 this U.S. Public Land Survey Monument Record is correct and  
 complete to the best of my knowledge and belief.

Lester J. Schmit Signature      3 May 1990 Date



Index No. A-5

# U.S. PUBLIC LAND SURVEY MONUMENT RECORD

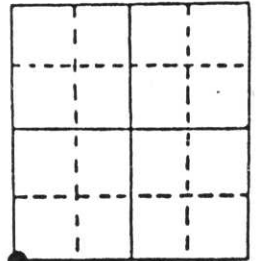
Note: This form is intended and designed to fulfill all requirements of Wisconsin Administrative Code, Chapter A-E 7.08 U.S. Public Land Survey Monument Record (3) (a) (b) (c) (d) (e) (f) (g) (h) (i). An additional sheet may be added if necessary conform with said requirements.

(a) Corner location: Township 36 North

Range 5 East

Town                      of Little Rice

County                      of Oneida



Section 32

5-35-5  
NW 1/4  
**FD + K**

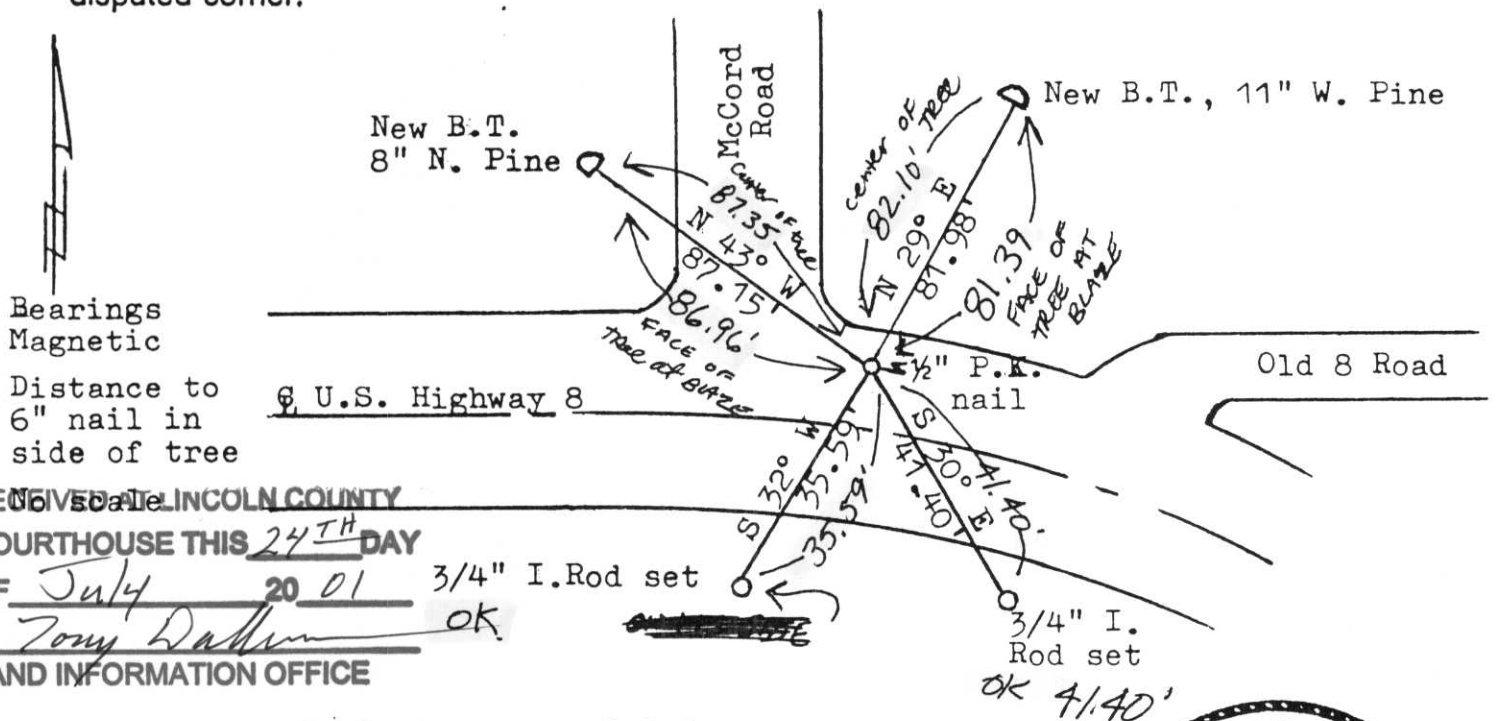
(b) (f) (g) (h) Description of monument found at this corner and if it was accepted, state all evidence (material, testimonial, occupational, plats, records, other monuments) used as a basis for accepting. not accepted or if nothing was found, state evidence used as basis for establishing location. reestablished through lost corner proportionate methods, indicate all monuments, distances and directions used to establish. Indicate type of monument found or set and sign post.

2 September 1860, Orig. cor. estab. by Alfred Millard West between 5 & 32....  
80.00 set post corner to Sections 5, 6, 31 & 32, B.T.s Hemlock 25 N 58 W 16;  
Hemlock 16 S 72 W 30; Fir 8 S 28 E 8 & Spruce 8 N 71 E 39

November 1934, On route location survey for new U.S. Highway 8, found Section corner in centre-line of Old U.S. Highway 8.

April 1989, Using stationing along centre-line new U.S. Highway 8 from D.O.T. map, located iron per station call and 11' north of centre-line. Iron is below new concrete surface. I accepted the iron for the corner and placed a 1/2" P.K. Nail at the surface of the road and witnessed it as shown below.

(c) (d) (e) Plan view of corner with ties to at least 4 witness monuments. If in disagreement with previously established corner, show the distances between the two corners and also indicate the ties to the disputed corner.



(i) I, Lester J. Schmit R.L.S. 1192  
(type or print name) certify that the corner location on this record was determined by me or under my direction and control and that this U.S. Public Land Survey Monument Record is correct and complete to the best of my knowledge and belief.

Lester J. Schmit  
Signature

3 May 1990  
Date



Index No. 2-5