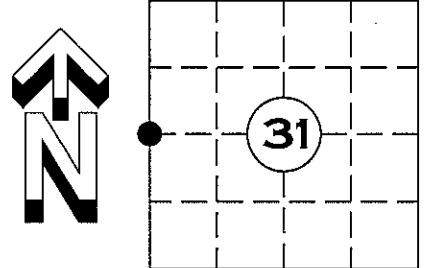


# U.S. PUBLIC LAND SURVEY MONUMENT RECORD

NOTE: THIS FORM IS INTENDED AND DESIGNED TO FULFILL ALL REQUIREMENTS OF WISCONSIN ADMINISTRATIVE CODE CHAPTER A-E 7.08 U.S. PUBLIC LAND SURVEY MONUMENT RECORD (3) (a)(b)(c)(d)(e)(f)(g)(h)(i). AN ADDITIONAL SHEET MAY BE ADDED IF NECESSARY TO CONFIRM WITH SAID REQUIREMENTS.

(a) CORNER LOCATION:  $\frac{W}{4}$  CORNER  
SECTION 31, TOWNSHIP 35 NORTH, RANGE 5 EAST  
TOWN OF WILSON, LINCOLN COUNTY  
LINCOLN COUNTY COORDINATES:  
NORTHING: 229951.455  
EASTING: 333405.516

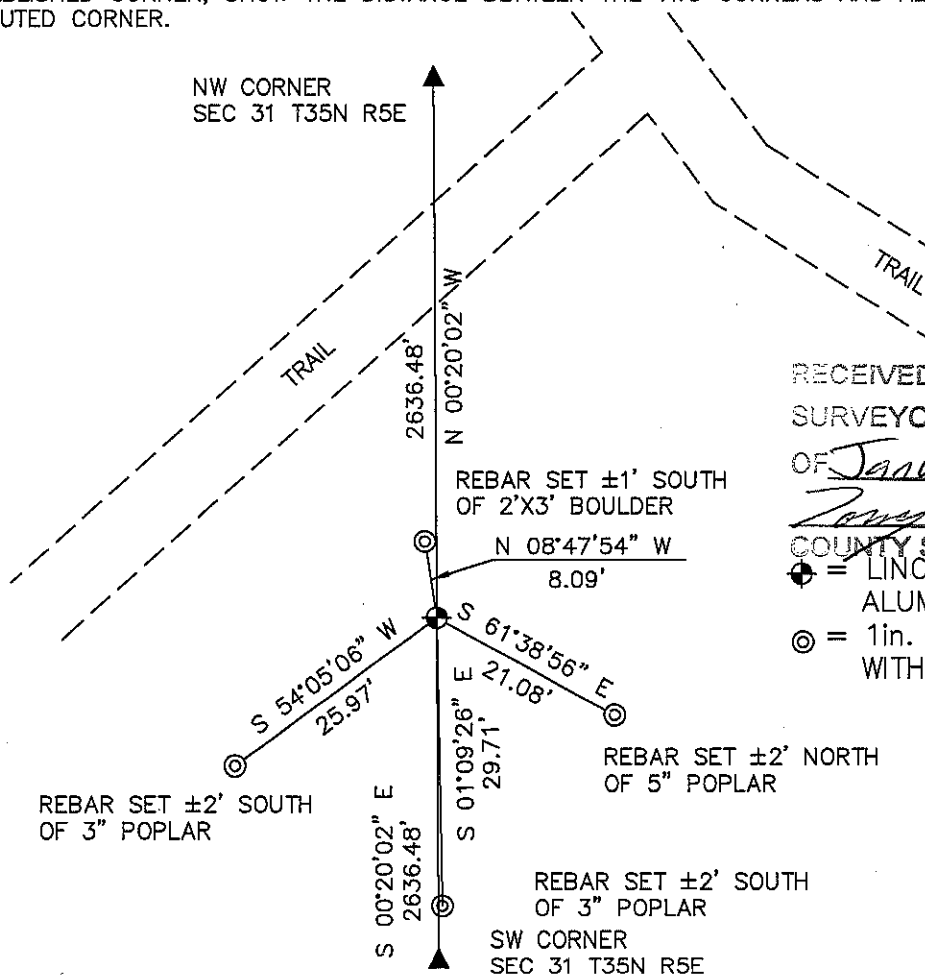


(b) HISTORY OF ORIGINAL CORNER:  
ORIGINAL SURVEYOR:  
ALFRED MILLARD AUG. 1860 - SEPT. 1860  
Y BIRCH 4 N 11° E 10 LINKS  
Y BIRCH 7 S 40° W 3 LINKS

(f)(g)(h) DESCRIPTION OF MONUMENT FOUND AT THIS CORNER AND IF IT WAS ACCEPTED STATE ALL EVIDENCE (MATERIAL, TESTIMONIAL, OCCUPATIONAL, PLATS, RECORDS, OTHER MONUMENTS) USED AS A BASIS FOR ESTABLISHING LOCATION. IF REESTABLISHED THROUGH LOST CORNER PROPORTIONATE METHODS, INDICATE ALL MONUMENTS, DISTANCES, AND DIRECTIONS USED TO ESTABLISH. INDICATE TYPE OF MONUMENT AND SIGN POST FOUND OR SET.

31 JANUARY 2012: SEARCH OF AREA REVEALED NO EVIDENCE OF CORNER. SET A LINCOLN COUNTY BERNTSEN ALUMINUM CAST MONUMENT BY SINGLE PROPORTIONATE MEASUREMENT BETWEEN THE NORTHWEST CORNER OF SECTION 30 T35N R5E AND THE SOUTHWEST CORNER OF SECTION 31 T35N R5E. (SEE SHEET 2 OF 2) ALSO SET FOUR NEW WITNESS MONUMENTS

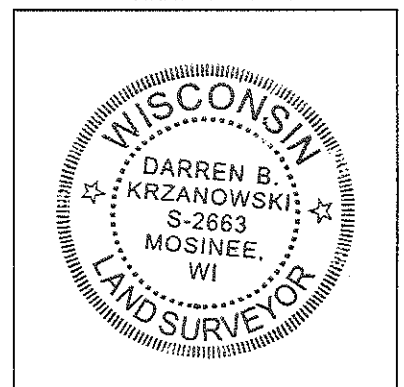
(c)(d)(e) PLAN VIEW OF CORNER WITH TIES TO AT LEAST FOUR WITNESSES. IF IN DISAGREEMENT WITH PREVIOUSLY ESTABLISHED CORNER, SHOW THE DISTANCE BETWEEN THE TWO CORNERS AND ALSO INDICATED THE TIE TO THE DISPUTED CORNER.



RECEIVED BY LINCOLN COUNTY  
SURVEYOR THIS 10TH DAY  
OF January 2013  
*Darren B. Krzanowski*  
COUNTY SURVEYOR

⊕ = LINCOLN COUNTY BERNTSEN  
ALUMINUM CAST MONUMENT SET  
⊙ = 1in. X 30in. REBAR 2.67lbs/ft.  
WITH ALUMINUM CAP SET

SHEET 1 OF 2



INDEX NO. T35N R5E W1

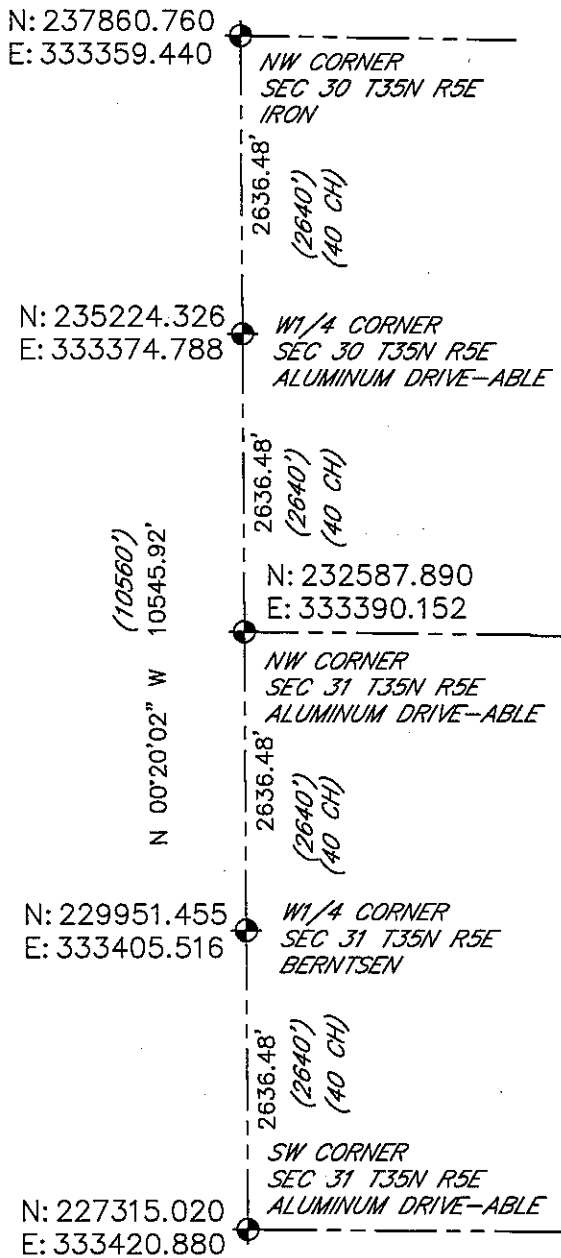
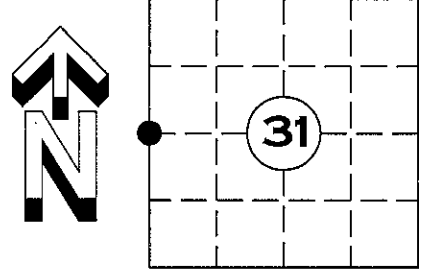
I DARREN B. KRZANOWSKI, REGISTERED LAND SURVEYOR NO. 2663, HEREBY CERTIFY THAT THE CORNER LOCATION ON THIS RECORD WAS REFERENCED BY ME OR UNDER MY DIRECTION AND CONTROL AND THAT THIS U.S. PUBLIC LAND SURVEY MONUMENT RECORD IS COMPLETE TO THE BEST OF MY KNOWLEDGE AND BELIEF.

*Darren B. Krzanowski*  
DARREN B. KRZANOWSKI RLS 2663  
DATED THIS 10TH DAY OF JANUARY 2013

# U.S. PUBLIC LAND SURVEY MONUMENT RECORD

NOTE: THIS FORM IS INTENDED AND DESIGNED TO FULFILL ALL REQUIREMENTS OF WISCONSIN ADMINISTRATIVE CODE CHAPTER A-E 7.08 U.S. PUBLIC LAND SURVEY MONUMENT RECORD (3) (a)(b)(c)(d)(e)(f)(g)(h)(i). AN ADDITIONAL SHEET MAY BE ADDED IF NECESSARY TO CONFIRM WITH SAID REQUIREMENTS.

(a) CORNER LOCATION: W1/4 CORNER  
SECTION 31, TOWNSHIP 35 NORTH, RANGE 5 EAST  
TOWN OF WILSON, LINCOLN COUNTY



⊕ = GOVERNMENT CORNER LOCATION  
( ) = ORIGINAL SURVEY

30 T35N R5E

31 T35N R5E

RECEIVED BY LINCOLN COUNTY  
SURVEYOR THIS 10<sup>TH</sup> DAY  
OF January 2013  
*Darren B. Krzanowski*  
COUNTY SURVEYOR

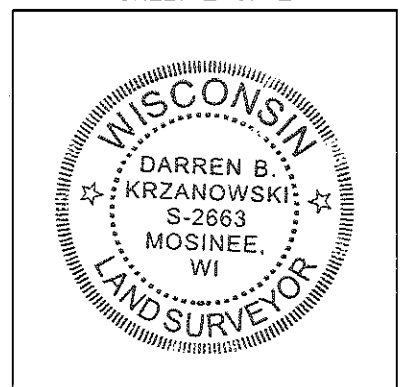
SHEET 2 OF 2

INDEX NO. T35N R5E W1

I DARREN B. KRZANOWSKI, REGISTERED LAND SURVEYOR NO. 2663, HEREBY CERTIFY THAT THE CORNER LOCATION ON THIS RECORD WAS REFERENCED BY ME OR UNDER MY DIRECTION AND CONTROL AND THAT THIS U.S. PUBLIC LAND SURVEY MONUMENT RECORD IS COMPLETE TO THE BEST OF MY KNOWLEDGE AND BELIEF.

*Darren B. Krzanowski*

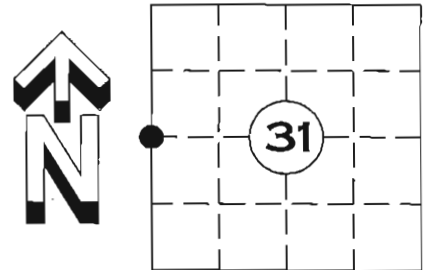
DARREN B. KRZANOWSKI RLS 2663  
DATED THIS 10<sup>TH</sup> DAY OF JANUARY, 2013



# U.S. PUBLIC LAND SURVEY MONUMENT RECORD

NOTE: THIS FORM IS INTENDED AND DESIGNED TO FULFILL ALL REQUIREMENTS OF WISCONSIN ADMINISTRATIVE CODE CHAPTER A-E 7.08 U.S. PUBLIC LAND SURVEY MONUMENT RECORD (3) (a)(b)(c)(d)(e)(f)(g)(h)(i). AN ADDITIONAL SHEET MAY BE ADDED IF NECESSARY TO CONFIRM WITH SAID REQUIREMENTS.

(a) CORNER LOCATION:  $W\frac{1}{4}$  CORNER  
 SECTION 31, TOWNSHIP 35 NORTH, RANGE 5 EAST  
 TOWN OF WILSON, LINCOLN COUNTY  
 LINCOLN COUNTY COORDINATES:  
 NORTHING: 229942.917  
 EASTING: 333406.264

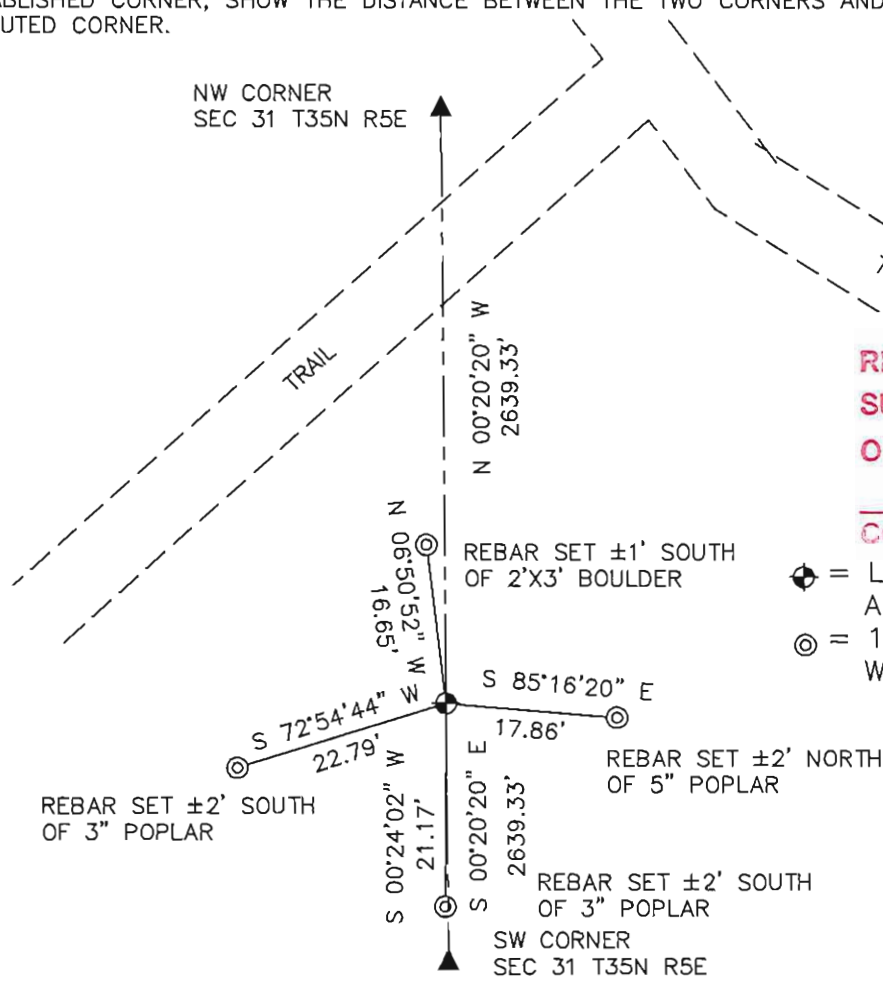


(b) HISTORY OF ORIGINAL CORNER:  
 ORIGINAL SURVEYOR:  
 ALFRED MILLARD AUG. 1860 – SEPT. 1860  
 Y BIRCH 4 N 11° E 10 LINKS  
 Y BIRCH 7 S 40° W 3 LINKS

(f)(g)(h) DESCRIPTION OF MONUMENT FOUND AT THIS CORNER AND IF IT WAS ACCEPTED STATE ALL EVIDENCE (MATERIAL, TESTIMONIAL, OCCUPATIONAL, PLATS, RECORDS, OTHER MONUMENTS) USED AS A BASIS FOR ESTABLISHING LOCATION. IF REESTABLISHED THROUGH LOST CORNER PROPORTIONATE METHODS, INDICATE ALL MONUMENTS, DISTANCES, AND DIRECTIONS USED TO ESTABLISH. INDICATE TYPE OF MONUMENT AND SIGN POST FOUND OR SET.

31 JANUARY 2012: SEARCH OF AREA REVEALED NO EVIDENCE OF CORNER. SET A LINCOLN COUNTY BERNTSEN ALUMINUM CAST MONUMENT BY SINGLE PROPORTIONATE MEASUREMENT BETWEEN THE NORTHWEST CORNER OF SECTION 30 T35N R5E AND THE SOUTHWEST CORNER OF SECTION 31 T35N R5E. (SEE SHEET 2 OF 2) ALSO SET FOUR NEW WITNESS MONUMENTS

(c)(d)(e) PLAN VIEW OF CORNER WITH TIES TO AT LEAST FOUR WITNESSES. IF IN DISAGREEMENT WITH PREVIOUSLY ESTABLISHED CORNER, SHOW THE DISTANCE BETWEEN THE TWO CORNERS AND ALSO INDICATED THE TIE TO THE DISPUTED CORNER.



RECEIVED BY LINCOLN COUNTY  
 SURVEYOR THIS 22<sup>ND</sup> DAY  
 OF February 20 12  
*Tom Dallen*  
 COUNTY SURVEYOR

- ◆ = LINCOLN COUNTY BERNTSEN ALUMINUM CAST MONUMENT SET
- ⊙ = 1in. X 30in. REBAR 2.67lbs/ft. WITH ALUMINUM CAP SET

SHEET 1 OF 2



INDEX NO. T35N R5E W1

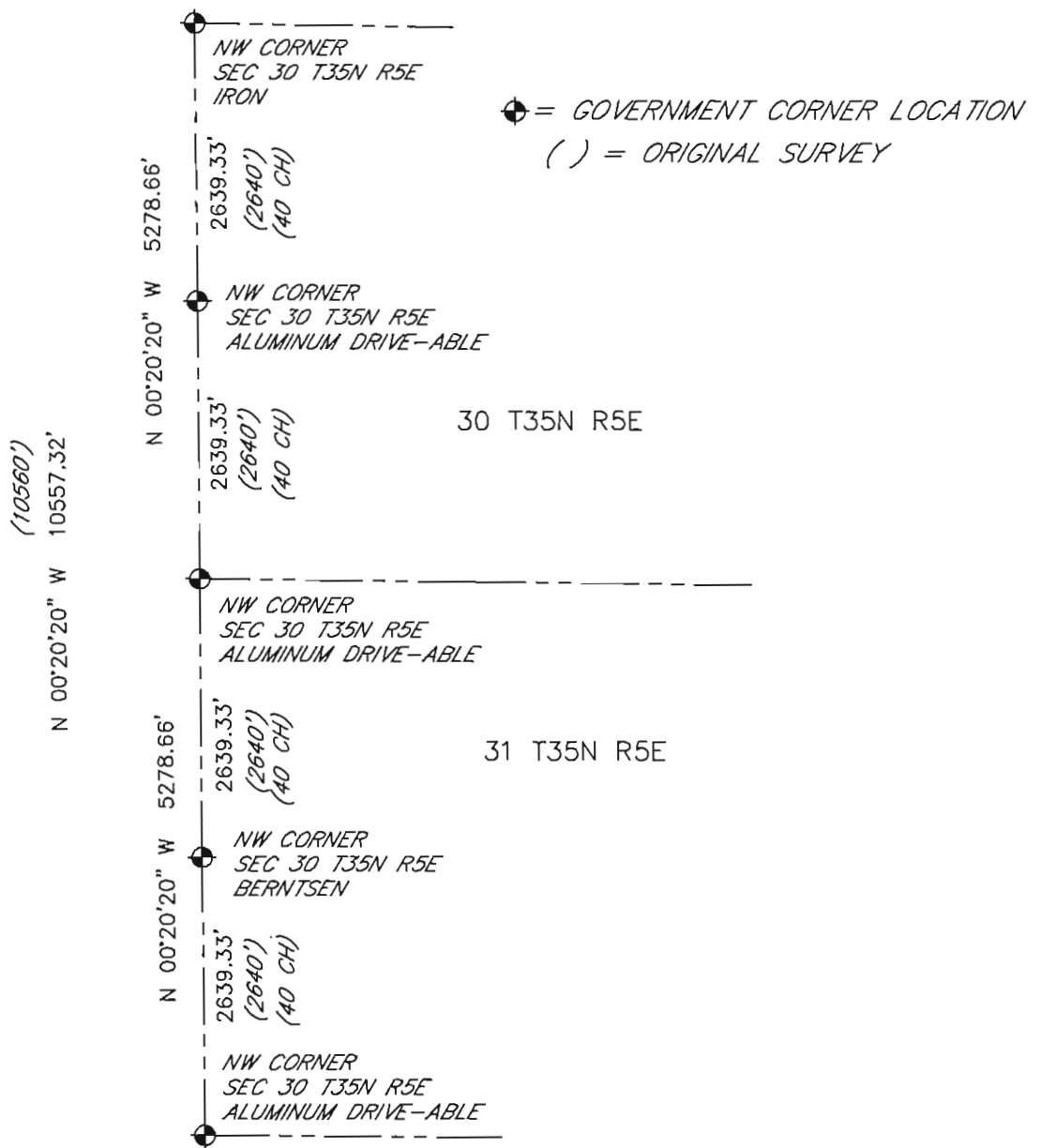
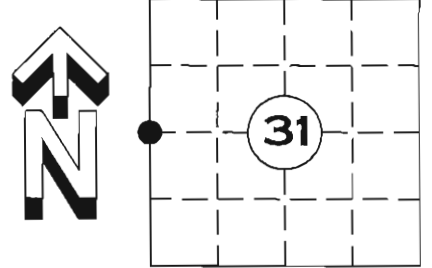
I DARREN B. KRZANOWSKI, REGISTERED LAND SURVEYOR NO. 2663, HEREBY CERTIFY THAT THE CORNER LOCATION ON THIS RECORD WAS REFERENCED BY ME OR UNDER MY DIRECTION AND CONTROL AND THAT THIS U.S. PUBLIC LAND SURVEY MONUMENT RECORD IS COMPLETE TO THE BEST OF MY KNOWLEDGE AND BELIEF.

*Darren B. Krzanowski*  
 DARREN B. KRZANOWSKI RLS 2663  
 DATED THIS 8<sup>TH</sup> DAY OF FEBRUARY 2012

# U.S. PUBLIC LAND SURVEY MONUMENT RECORD

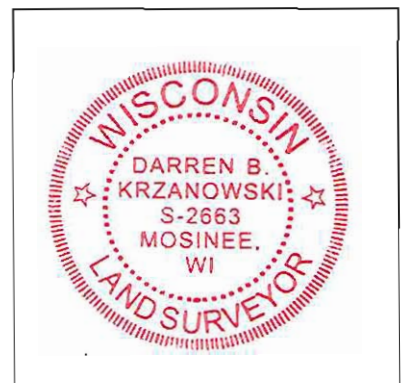
NOTE: THIS FORM IS INTENDED AND DESIGNED TO FULFILL ALL REQUIREMENTS OF WISCONSIN ADMINISTRATIVE CODE CHAPTER A-E 7.08 U.S. PUBLIC LAND SURVEY MONUMENT RECORD (3) (a)(b)(c)(d)(e)(f)(g)(h)(i). AN ADDITIONAL SHEET MAY BE ADDED IF NECESSARY TO CONFIRM WITH SAID REQUIREMENTS.

(a) CORNER LOCATION: W1/4 CORNER  
SECTION 31, TOWNSHIP 35 NORTH, RANGE 5 EAST  
TOWN OF WILSON, LINCOLN COUNTY



RECEIVED BY LINCOLN COUNTY  
 SURVEYOR THIS 22<sup>ND</sup> DAY  
 OF February 20 12  
*Tony Wall*  
 COUNTY SURVEYOR

SHEET 2 OF 2



I DARREN B. KRZANOWSKI, REGISTERED LAND SURVEYOR NO. 2663, HEREBY CERTIFY THAT THE CORNER LOCATION ON THIS RECORD WAS REFERENCED BY ME OR UNDER MY DIRECTION AND CONTROL AND THAT THIS U.S. PUBLIC LAND SURVEY MONUMENT RECORD IS COMPLETE TO THE BEST OF MY KNOWLEDGE AND BELIEF.

*Darren B. Krzanowski*  
 DARREN B. KRZANOWSKI RLS 2663  
 DATED THIS 20TH DAY OF FEBRUARY, 2012

INDEX NO. T35N R5E W1





PLEASE  
DO NOT  
DISTURB  
NEARBY

SURVEY

IF THE LOCATION  
OF THIS MARKER  
IS CHANGED  
PLEASE CONTACT  
THE  
LAND  
OWNER





MARKER  
MARKER  
SURVEY  
PENALTY  
FOR  
DISTURBING  
LINCOLN  
COUNTY

