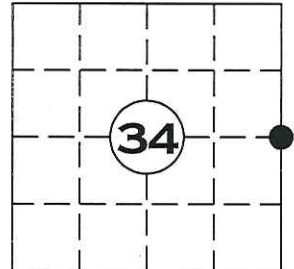


# U.S. PUBLIC LAND SURVEY MONUMENT RECORD

NOTE: THIS FORM IS INTENDED AND DESIGNED TO FULFILL ALL REQUIREMENTS OF WISCONSIN ADMINISTRATIVE CODE CHAPTER A-E 7.08 U.S. PUBLIC LAND SURVEY MONUMENT RECORD (3) (a)(b)(c)(d)(e)(f)(g)(h)(i). AN ADDITIONAL SHEET MAY BE ADDED IF NECESSARY TO CONFIRM WITH SAID REQUIREMENTS.

(a) CORNER LOCATION:  
 SECTION 34 TOWNSHIP 35 NORTH, RANGE ~~3~~<sup>4</sup> EAST *4 ARD 12/18/12*  
 TOWN OF: SOMO, LINCOLN COUNTY  
 LINCOLN COUNTY COORDINATES:  
 NORTHING: 230023.190  
 EASTING: 322656.837



(b) HISTORY OF ORIGINAL CORNER:  
 ORIGINAL SURVEYOR:  
 EDWARD D. PALMER APRIL 1865 - MAY 1865  
 BIRCH 13 N80°W 8 LINKS  
 BIRCH 6 S20°E 22 LINKS

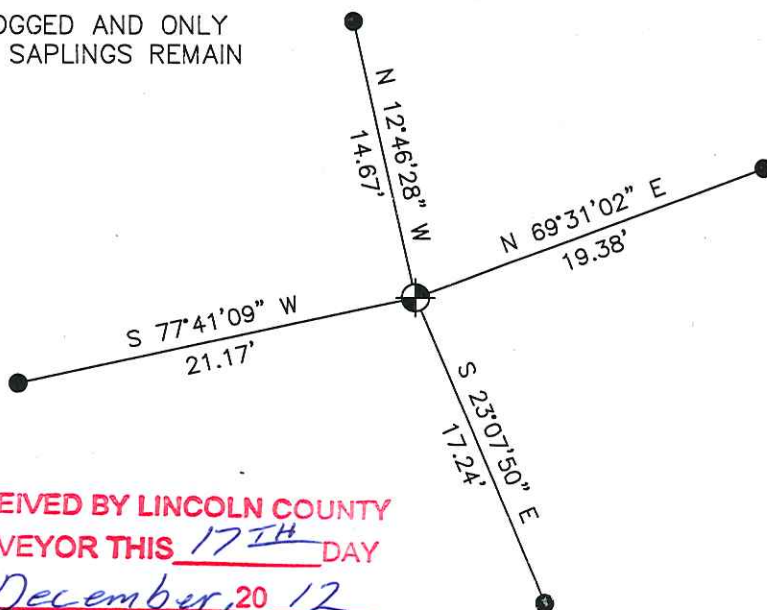
(f)(g)(h) DESCRIPTION OF MONUMENT FOUND AT THIS CORNER AND IF IT WAS ACCEPTED STATE ALL EVIDENCE (MATERIAL, TESTIMONIAL, OCCUPATIONAL, PLATS, RECORDS, OTHER MONUMENTS) USED AS A BASIS FOR ESTABLISHING LOCATION. IF REESTABLISHED THROUGH LOST CORNER PROPORTIONATE METHODS, INDICATE ALL MONUMENTS, DISTANCES, AND DIRECTIONS USED TO ESTABLISH. INDICATE TYPE OF MONUMENT AND SIGN POST FOUND OR SET.

SEARCH OF AREA REVEALED NO EVIDENCE OF ORIGINAL CORNER. COMPUTED CORNER LOCATION BY SINGLE PROPORTIONATE MEASUREMENT. SET LINCOLN CAST ALUMINUM MONUMENT AND FOUR WITNESS MONUMENTS.

(c)(d)(e) PLAN VIEW OF CORNER WITH TIES TO AT LEAST FOUR WITNESSES. IF IN DISAGREEMENT WITH PREVIOUSLY ESTABLISHED CORNER, SHOW THE DISTANCE BETWEEN THE TWO CORNERS AND ALSO INDICATED THE TIE TO THE DISPUTED CORNER.

- = LINCOLN COUNTY CAST ALUMINUM MONUMENT SET
- = 1in. X 30in. REBAR 2.67lbs/ft SET

NOTE:  
 AREA LOGGED AND ONLY  
 POPLAR SAPPLINGS REMAIN



RECEIVED BY LINCOLN COUNTY  
 SURVEYOR THIS 17<sup>TH</sup> DAY  
 OF December 20 12  
*Tommy Duller*  
 COUNTY SURVEYOR

SHEET 1 OF 2



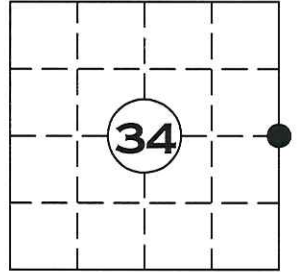
INDEX NO. T35N R4E W17

I DARREN B. KRZANOWSKI, REGISTERED LAND SURVEYOR NO. 2663, HEREBY CERTIFY THAT THE CORNER LOCATION ON THIS RECORD WAS REFERENCED BY ME OR UNDER MY DIRECTION AND CONTROL AND THAT THIS U.S. PUBLIC LAND SURVEY MONUMENT RECORD IS COMPLETE TO THE BEST OF MY KNOWLEDGE AND BELIEF.

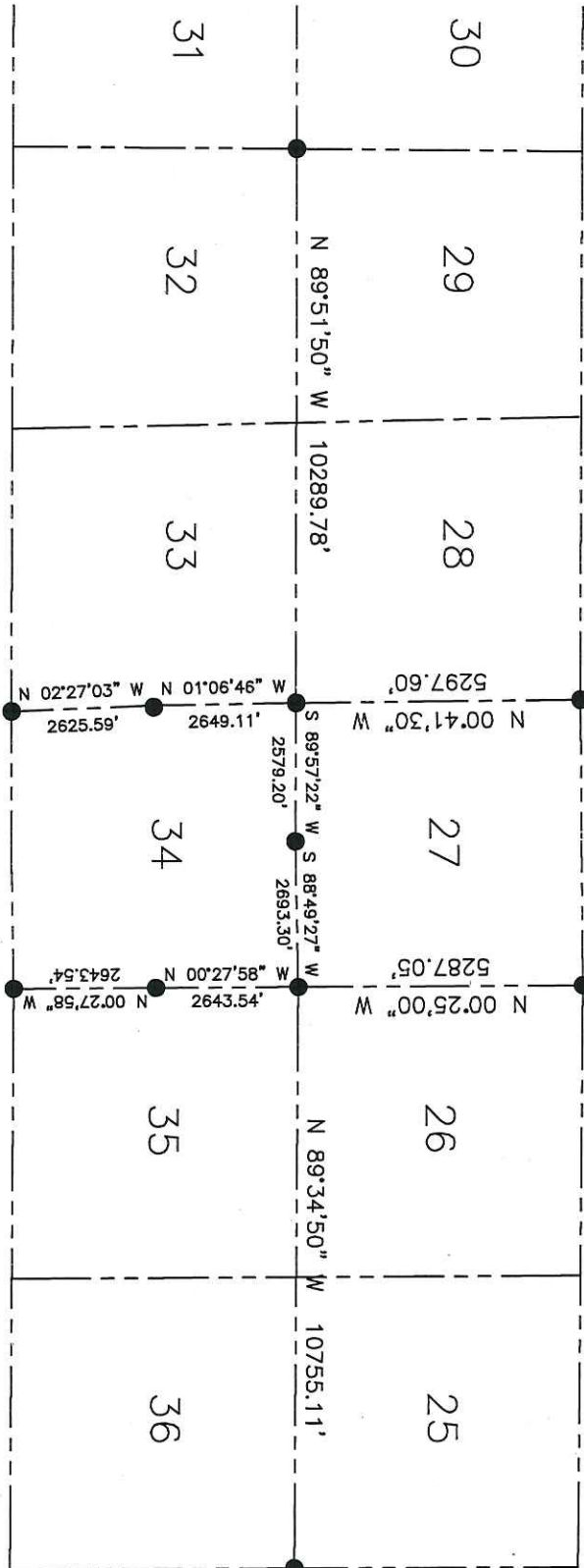
*Darren B. Krzanowski*  
 DARREN B. KRZANOWSKI RLS 2663  
 DATED THIS 12<sup>TH</sup> DAY OF DECEMBER 2012

# U.S. PUBLIC LAND SURVEY MONUMENT RECORD

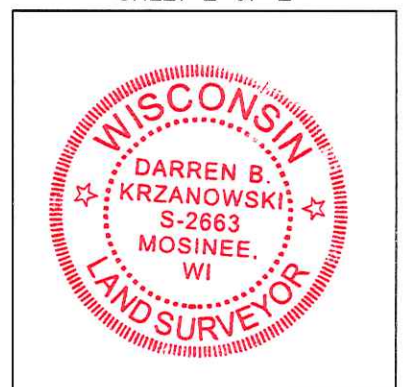
NOTE: THIS FORM IS INTENDED AND DESIGNED TO FULFILL ALL REQUIREMENTS OF WISCONSIN ADMINISTRATIVE CODE CHAPTER A-E 7.08 U.S. PUBLIC LAND SURVEY MONUMENT RECORD (3) (a)(b)(c)(d)(e)(f)(g)(h)(i). AN ADDITIONAL SHEET MAY BE ADDED IF NECESSARY TO CONFIRM WITH SAID REQUIREMENTS.



NOTE:  
SECTION 34 CORNERS BASED ON HOLDING THE CENTERLINE OF HWY "T" AND A LINE BETWEEN THE NW CORNER OF SECTION 32 AND THE NE CORNER OF SECTION 36 THEN PRORATING EAST AND WEST TO ESTABLISH THE NE AND NW CORNERS OF SECTION 34



SHEET 2 OF 2



INDEX NO. T35N R4E W17

RECEIVED BY LINCOLN COUNTY  
SURVEYOR THIS 17<sup>TH</sup> DAY  
OF December 20 12  
*Tom Ball*  
COUNTY SURVEYOR

I, DARREN B. KRZANOWSKI, REGISTERED LAND SURVEYOR NO. 2663, HEREBY CERTIFY THAT THE CORNER LOCATION ON THIS RECORD WAS REFERENCED BY ME OR UNDER MY DIRECTION AND CONTROL AND THAT THIS U.S. PUBLIC LAND SURVEY MONUMENT RECORD IS COMPLETE TO THE BEST OF MY KNOWLEDGE AND BELIEF.

*Darren B. Krzanowski*  
DARREN B. KRZANOWSKI RLS 2663  
DATED THIS 12TH DAY OF DECEMBER 2012









