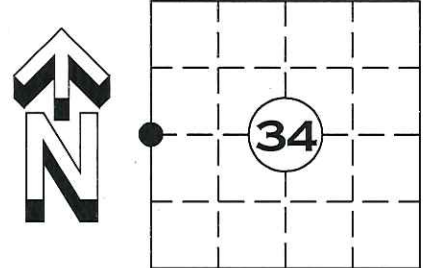


U.S. PUBLIC LAND SURVEY MONUMENT RECORD

NOTE: THIS FORM IS INTENDED AND DESIGNED TO FULFILL ALL REQUIREMENTS OF WISCONSIN ADMINISTRATIVE CODE CHAPTER A-E 7.08 U.S. PUBLIC LAND SURVEY MONUMENT RECORD (3) (a)(b)(c)(d)(e)(f)(g)(h)(i). AN ADDITIONAL SHEET MAY BE ADDED IF NECESSARY TO CONFIRM WITH SAID REQUIREMENTS.

(a) CORNER LOCATION:
 SECTION 34 TOWNSHIP 35 NORTH, RANGE 4 EAST
 TOWN OF: SOMO, LINCOLN COUNTY
 LINCOLN COUNTY COORDINATES:
 NORTHING: 229960.804
 EASTING: 317414.850

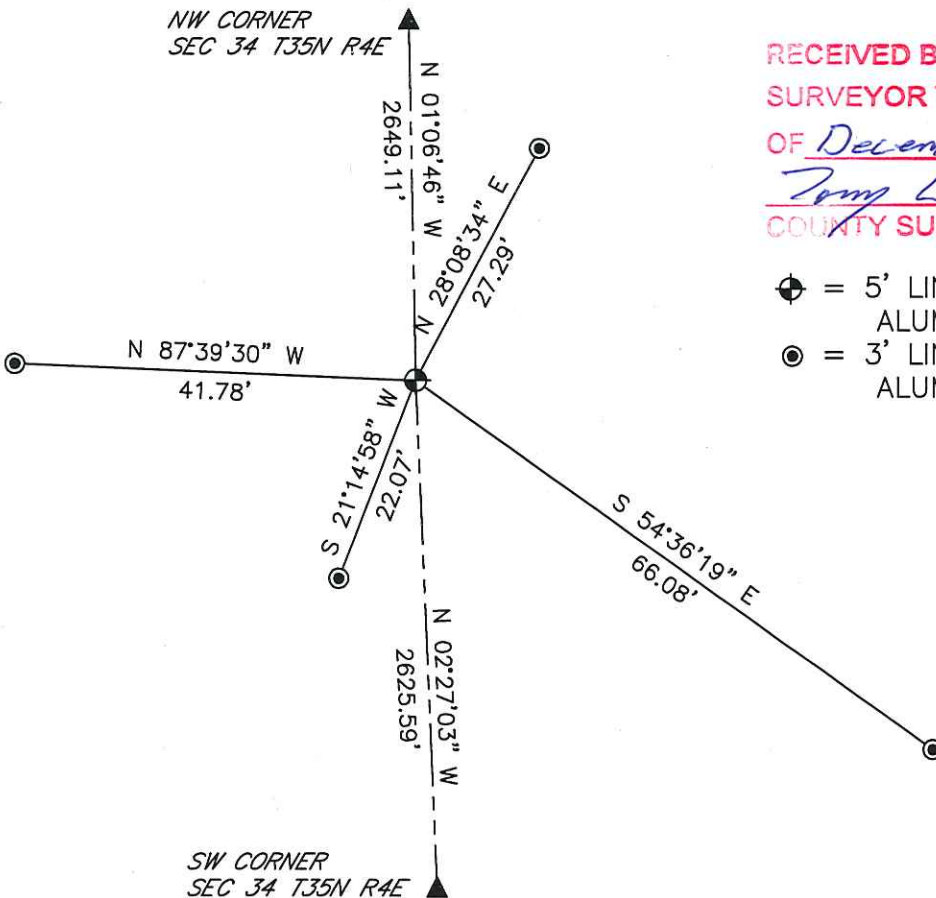


(b) HISTORY OF ORIGINAL CORNER:
 ORIGINAL SURVEYOR: EDWARD D. PALMER APRIL 1865 – MAY 1865
 TAMARAC 7 N 80° W 11 LINKS
 W.PINE 6 S 63° E 13 LINKS

(f)(g)(h) DESCRIPTION OF MONUMENT FOUND AT THIS CORNER AND IF IT WAS ACCEPTED STATE ALL EVIDENCE (MATERIAL, TESTIMONIAL, OCCUPATIONAL, PLATS, RECORDS, OTHER MONUMENTS) USED AS A BASIS FOR ESTABLISHING LOCATION. IF REESTABLISHED THROUGH LOST CORNER PROPORTIONATE METHODS, INDICATE ALL MONUMENTS, DISTANCES, AND DIRECTIONS USED TO ESTABLISH. INDICATE TYPE OF MONUMENT AND SIGN POST FOUND OR SET.

FOUND HOLLOWED CEDAR POST WITH SURVEY RIBBON ±35' SW OF A COMPUTED SEARCH AREA. ACCEPTED POST AS THE CORNER AND SET A 5' LINCOLN COUNTY ALUMINUM DRIVE-ABLE MONUMENT IN THE CENTER OF IT. AND SET FOUR NEW WITNESS MONUMENTS

(c)(d)(e) PLAN VIEW OF CORNER WITH TIES TO AT LEAST FOUR WITNESSES. IF IN DISAGREEMENT WITH PREVIOUSLY ESTABLISHED CORNER, SHOW THE DISTANCE BETWEEN THE TWO CORNERS AND ALSO INDICATED THE TIE TO THE DISPUTED CORNER.



RECEIVED BY LINCOLN COUNTY
 SURVEYOR THIS 17TH DAY
 OF December, 20 12
Darren B. Krzanowski
 COUNTY SURVEYOR

- ⊕ = 5' LINCOLN COUNTY DRIVE-ABLE ALUMINUM MONUMENT SET
- ⊙ = 3' LINCOLN COUNTY DRIVE-ABLE ALUMINUM MONUMENT SET

INDEX NO. T35N R4E W 13



I DARREN B. KRZANOWSKI, REGISTERED LAND SURVEYOR NO. 2663, HEREBY CERTIFY THAT THE CORNER LOCATION ON THIS RECORD WAS REFERENCED BY ME OR UNDER MY DIRECTION AND CONTROL AND THAT THIS U.S. PUBLIC LAND SURVEY MONUMENT RECORD IS COMPLETE TO THE BEST OF MY KNOWLEDGE AND BELIEF.

Darren B. Krzanowski
 DARREN B. KRZANOWSKI RLS 2663
 DATED THIS 13TH DAY OF DECEMBER, 2012











