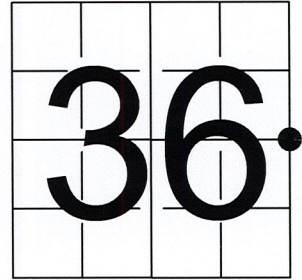


# U S PUBLIC LAND SURVEY MONUMENT RECORD

NOTE: This form is intended and designed to fulfill all requirements of Wisconsin Administrative Code, Chapter A-E 7.08 U.S. Public Land Survey Monument Record (3) (a-i)

A-E 7.08(3)(a) Identity of corner:  
 EAST 1/4 CORNER SECTION 36,  
 TOWNSHIP 35 NORTH,  
 RANGE 03 EAST OF THE 4TH PM,  
 TOWN OF SPIRIT,  
 COUNTY OF PRICE

WISCORS - LINCOLN COUNTY  
 N: 229,982.994 USft (229,983.084)  
 E: 301,596.466 USft (301,596.528)  
 Datum: NAD83 (2011)  
 GNSS Method RTN - Direct  
 GNSS Control WISCORS VRS



The coordinate value shown has been verified by the average of two or more GPS observations at a markedly different time. Coordinates shown in parenthesis are provided by Lincoln County.

A-E 7.08(3)(b)

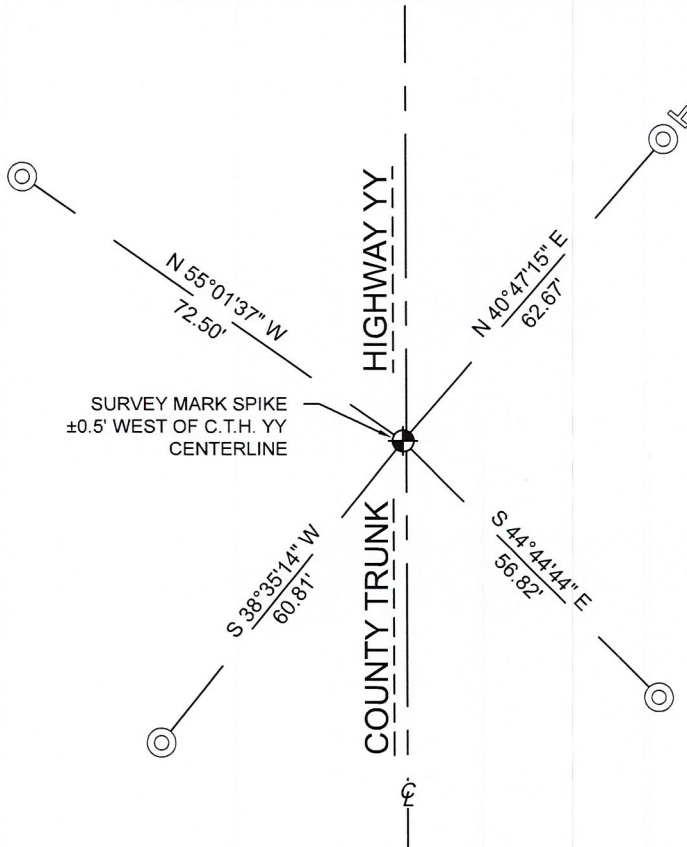
Original Surveyor: Alex Anderson

Date of Original Survey	Commenced:	July 1 1864	Original Accessories:		
	Completed:	July 12, 1864	Hemlock	10	N 22° W 20 Links
			Hemlock	10	N 10° E 7 Links

May 24, 2022 - While performing the 2022 Lincoln County PLSS Corner Remonumentation and GPS Services project, I found a Berntsen Survey Mark steel spike near the computed position provided by Lincoln County. The monument is 0.5 feet west of C.T.H. YY centerline.

I also found 4 existing reference monuments (no record) as shown below, and established 0 new reference monuments.

A-E 7.08(3)(c)(d) Plan view of corner with references to at least 4 witness monuments.



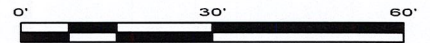
BEARINGS LISTED TO THE NEAREST SECOND ARE REFERENCED TO WISCONSIN COUNTY COORDINATE REFERENCE SYSTEM - LINCOLN COUNTY ZONE. ALL OTHER BEARINGS ARE MAGNETIC

RECEIVED BY LINCOLN COUNTY SURVEYOR THIS 19<sup>TH</sup> DAY OF September 20, 22  
*Tom DeMuth*  
 COUNTY SURVEYOR



## LEGEND

- Berntsen Survey Mark spike, found
- 2" diameter aluminum cap, found
- Vinyl T-post, found ±0.4 feet NE of witness



A-E 7.08(3)(e) 1864 Surveyor set a post. I found a Berntsen Survey Mark steel spike.  
 A-E 7.08(3)(f) I accept this monument as a FOUND PERPETUATED LOCATION of the corner.  
 A-E 7.08(3)(g)(h) This corner was not determined through lost-corner-proportionate methods.

A-E 7.08(3)(i) I, Jeffrey L. DeMuth, Professional Land Surveyor No. S-2656, hereby certify that the corner location on this record was determined by the Lincoln County Surveyor, and the monuments found or set as shown hereon were measured by me or under my direction and control, and that this U.S. Public Land Survey Monument Record is correct and complete to the best of my knowledge, and belief.



W-1

SIGNATURE

September 16, 2022

DATE

## REPORT

### 2022-Lincoln County PLSS Corner Remonumentation and GPS Services

Wisconsin Corner Point Identification Number: 43503362000  
Surveyor: Jeffrey L. DeMuth – S2656  
Corner monument: Found Berntsen “Survey Mark” steel spike.

Field Book: Cardinal North – Lincoln Co. Remon. – 2022-00  
Page: 20

Horizontal Datum: WisCRS – Lincoln County Zone – NAD83(2011)

Date / time of initial measurement:  
May 24, 2022 - Start 10:47:12 CDT – End 10:55:02 CDT

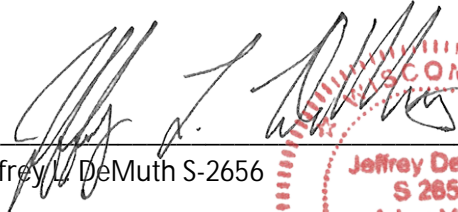
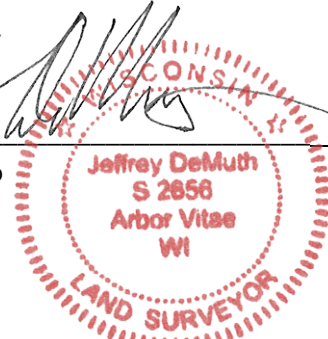
Reference monuments:  
4 – Found - 2” diameter Lincoln Co. aluminum capped monuments by others.  
1 – Found – T-Post others.

#### Coordinate Table

	County Provided	2022 Measurement	Difference
North	229983.084	229982.994	0.09
East	301596.528	301596.466	0.06

Observed coordinates match existing calculated coordinates within reason.  
Request Data Log for more information.

Additional Notes:  
Corner falls  $\pm 0.5$  feet west of CTH YY centerline.

  
 Jeffrey L. DeMuth S-2656
 
 September 16, 2022  
 Date

43503362000\_Mon-N



43503362000\_North



43503362000\_West



43503362000\_South



43503362000\_East

