

CERTIFIED LAND CORNER RESTORATION

Index No. U-3

State of Wisconsin }  
 County of Portage } ss.

I, Joseph S. Glodowski, do hereby certify that on the 10 day of May, 1982, I found evidence of the South quarter corner of Section 30

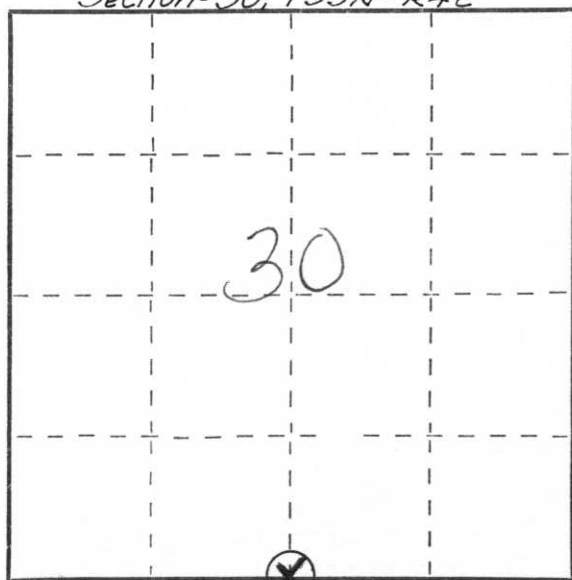
Township 35, North, Range 4 East, Fourth, Principal Meridian,

as described hereon; and that from this evidence I established a new monument and accessories as described hereon to perpetuate the original location of this corner.

Resident witnesses:

.....  
 .....  
 .....

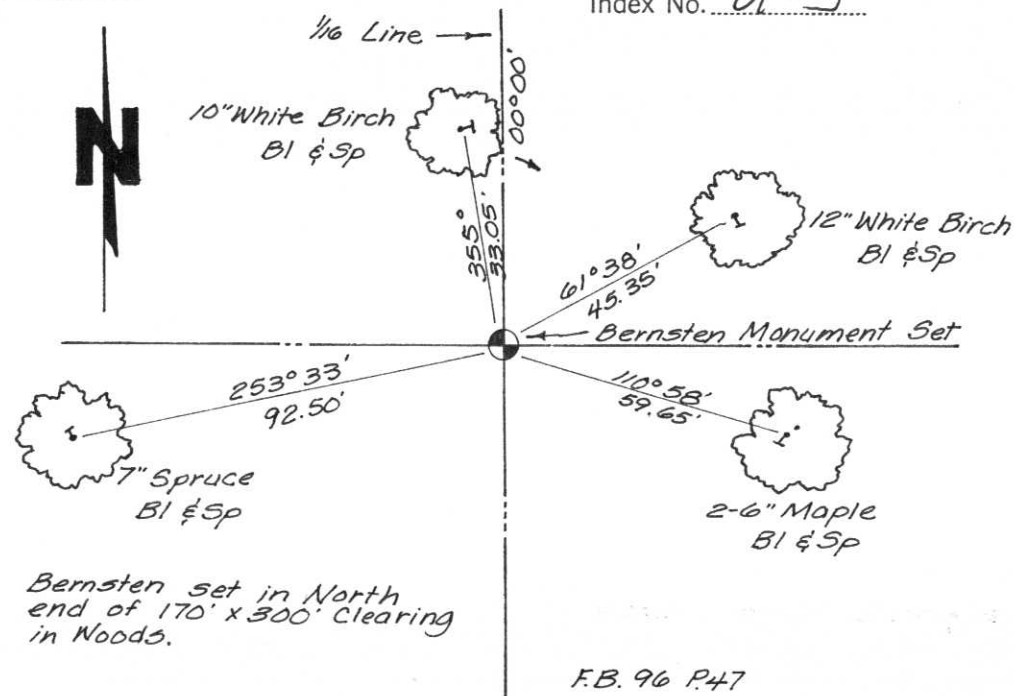
Section-30, T35N-R4E



○ = Corner monument restored.

History of original corner establishment:  
 Corner was established in the original government survey.

Description of corner evidence found:  
 Corner location was determined by a traverse of the entire section & using all the available evidence comparing with the original field notes.



Description of monument and accessories I established to perpetuate the original location of this corner.

Bernsten east aluminum monument was placed on this corner & 4 witness corners marked. The trees used were blazed on the sides facing the monumented corner and a spike driven in the tree at ground level.

Dated at Stevens Point, Wis., this 28 day of June, 1982.

Signature Joseph S. Glodowski Title Registered Land Surveyor Registration No. S-1333  
 (County Surveyor, Registered Land Surveyor, or other duly authorized official)

Office of Register of Deeds, County of....., I hereby certify that the within instrument was filed in this office for record on the..... day of....., 19..... at..... o'clock..... M.

(Register of Deeds)

By..... Deputy