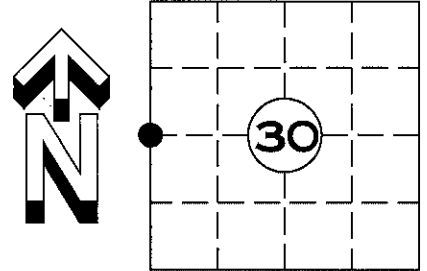


U.S. PUBLIC LAND SURVEY MONUMENT RECORD

NOTE: THIS FORM IS INTENDED AND DESIGNED TO FULFILL ALL REQUIREMENTS OF WISCONSIN ADMINISTRATIVE CODE CHAPTER A-E 7.08 U.S. PUBLIC LAND SURVEY MONUMENT RECORD (3) (a)(b)(c)(d)(e)(f)(g)(h)(i). AN ADDITIONAL SHEET MAY BE ADDED IF NECESSARY TO CONFIRM WITH SAID REQUIREMENTS.

(a) CORNER LOCATION: $\frac{W}{4}$ CORNER
SECTION 30 TOWNSHIP 35 NORTH, RANGE 5 EAST
TOWN OF: WILSON, LINCOLN COUNTY
LINCOLN COUNTY COORDINATES:
NORTHING: 235224.326
EASTING: 333374.788

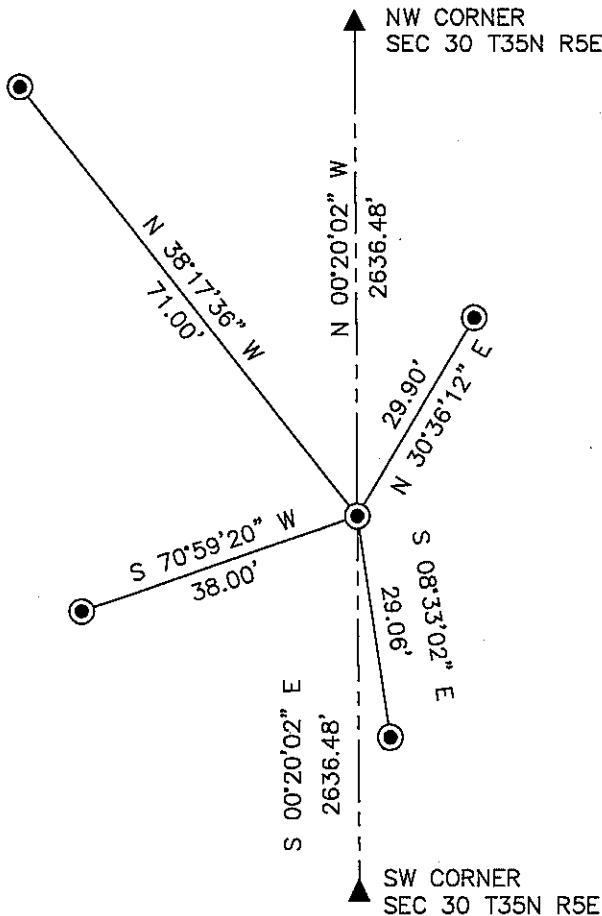


(b) HISTORY OF ORIGINAL CORNER:
ORIGINAL SURVEYOR: ALFRED MILLARD AUG 1860 - SEPT 1860
SPRUCE 5 N 15° W 8 LINKS
SPRUCE 5 S 50° E 22 LINKS

(f)(g)(h) DESCRIPTION OF MONUMENT FOUND AT THIS CORNER AND IF IT WAS ACCEPTED STATE ALL EVIDENCE (MATERIAL, TESTIMONIAL, OCCUPATIONAL, PLATS, RECORDS, OTHER MONUMENTS) USED AS A BASIS FOR ESTABLISHING LOCATION. IF REESTABLISHED THROUGH LOST CORNER PROPORTIONATE METHODS, INDICATE ALL MONUMENTS, DISTANCES, AND DIRECTIONS USED TO ESTABLISH. INDICATE TYPE OF MONUMENT AND SIGN POST FOUND OR SET.

5 FEBRUARY 2012: SEARCH OF AREA REVEALED NO EVIDENCE OF CORNER. SET A LINCOLN COUNTY DRIVE-ABLE ALUMINUM MONUMENT BY SINGLE PROPORTIONATE MEASUREMENT BETWEEN THE NORTHWEST CORNER OF SECTION 30 T35N R5E AND THE SOUTHWEST CORNER OF SECTION 31 T35N R5E (SEE SHEET 2 OF 2). ALSO SET NEW WITNESS MONUMENTS

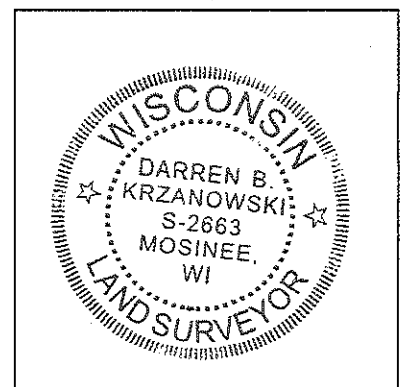
(c)(d)(e) PLAN VIEW OF CORNER WITH TIES TO AT LEAST FOUR WITNESSES. IF IN DISAGREEMENT WITH PREVIOUSLY ESTABLISHED CORNER, SHOW THE DISTANCE BETWEEN THE TWO CORNERS AND ALSO INDICATED THE TIE TO THE DISPUTED CORNER.



RECEIVED BY LINCOLN COUNTY
SURVEYOR THIS 10TH DAY
OF January 20 13
Tom Dally
COUNTY SURVEYOR

⊙ = LINCOLN COUNTY DRIVE-ABLE ALUMINUM MONUMENT SET

SHEET 1 OF 2



INDEX NO. T35N R5E S1

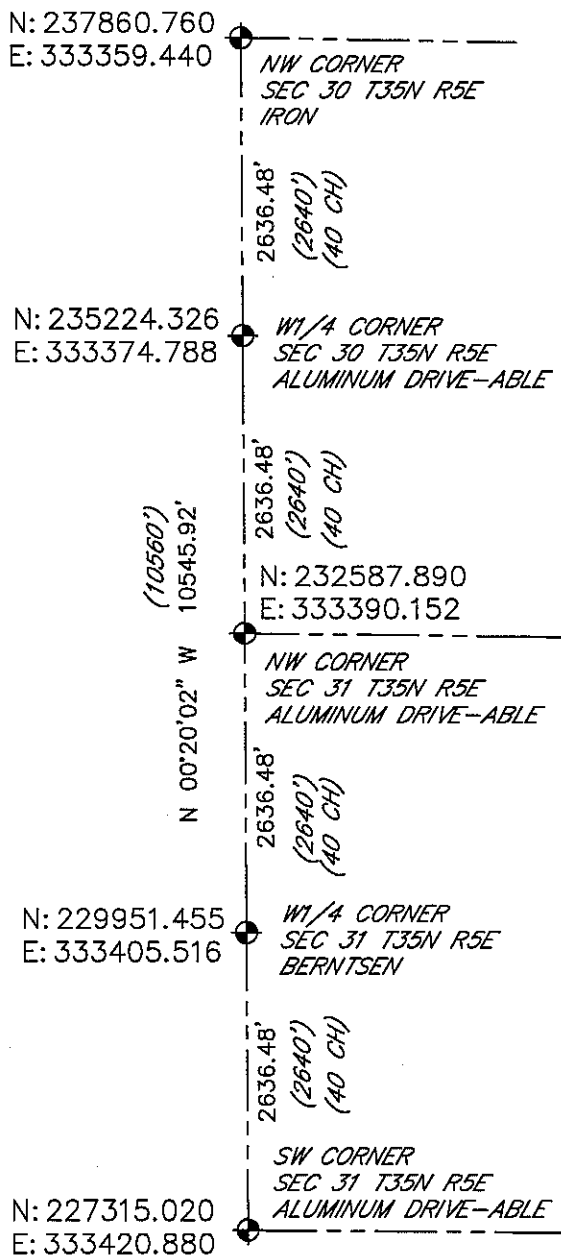
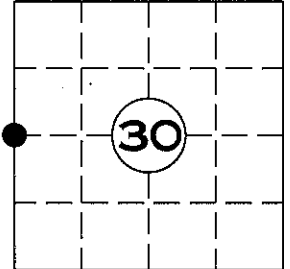
I, DARREN B. KRZANOWSKI, REGISTERED LAND SURVEYOR NO. 2663, HEREBY CERTIFY THAT THE CORNER LOCATION ON THIS RECORD WAS REFERENCED BY ME OR UNDER MY DIRECTION AND CONTROL AND THAT THIS U.S. PUBLIC LAND SURVEY MONUMENT RECORD IS COMPLETE TO THE BEST OF MY KNOWLEDGE AND BELIEF.

Darren B. Krzanowski
DARREN B. KRZANOWSKI RLS 2663
DATED THIS 10TH DAY OF JANUARY 2013

U.S. PUBLIC LAND SURVEY MONUMENT RECORD

NOTE: THIS FORM IS INTENDED AND DESIGNED TO FULFILL ALL REQUIREMENTS OF WISCONSIN ADMINISTRATIVE CODE CHAPTER A-E 7.08 U.S. PUBLIC LAND SURVEY MONUMENT RECORD (3) (a)(b)(c)(d)(e)(f)(g)(h)(i). AN ADDITIONAL SHEET MAY BE ADDED IF NECESSARY TO CONFIRM WITH SAID REQUIREMENTS.

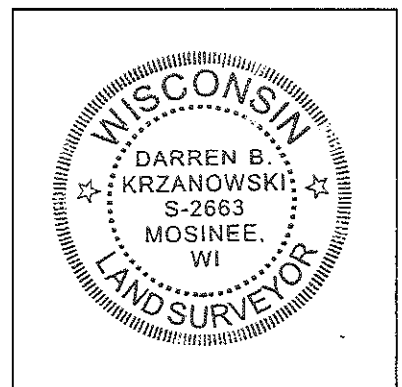
(a) CORNER LOCATION: W1/4 CORNER
SECTION 30, TOWNSHIP 35 NORTH, RANGE 5 EAST
TOWN OF WILSON, LINCOLN COUNTY



● = GOVERNMENT CORNER LOCATION
() = ORIGINAL SURVEY

RECEIVED BY LINCOLN COUNTY
SURVEYOR THIS 10TH DAY
OF January 20 13
[Signature]
COUNTY SURVEYOR

SHEET 2 OF 2



INDEX NO. T35N R5E S1

I DARREN B. KRZANOWSKI, REGISTERED LAND SURVEYOR NO. 2663, HEREBY CERTIFY THAT THE CORNER LOCATION ON THIS RECORD WAS REFERENCED BY ME OR UNDER MY DIRECTION AND CONTROL AND THAT THIS U.S. PUBLIC LAND SURVEY MONUMENT RECORD IS COMPLETE TO THE BEST OF MY KNOWLEDGE AND BELIEF.

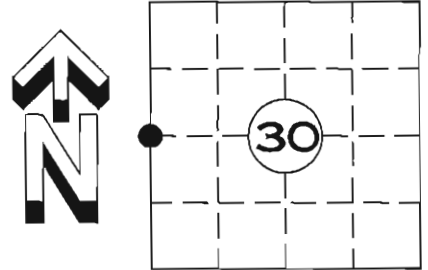
[Signature]

DARREN B. KRZANOWSKI RLS 2663
DATED THIS 10TH DAY OF JANUARY, 2013

U.S. PUBLIC LAND SURVEY MONUMENT RECORD

NOTE: THIS FORM IS INTENDED AND DESIGNED TO FULFILL ALL REQUIREMENTS OF WISCONSIN ADMINISTRATIVE CODE CHAPTER A-E 7.08 U.S. PUBLIC LAND SURVEY MONUMENT RECORD (3) (a)(b)(c)(d)(e)(f)(g)(h)(i). AN ADDITIONAL SHEET MAY BE ADDED IF NECESSARY TO CONFIRM WITH SAID REQUIREMENTS.

(a) CORNER LOCATION: $\frac{W}{4}$ CORNER
 SECTION 30 TOWNSHIP 35 NORTH, RANGE 5 EAST
 TOWN OF: WILSON, LINCOLN COUNTY
 LINCOLN COUNTY COORDINATES:
 NORTHING: 235221.480
 EASTING: 333375.048

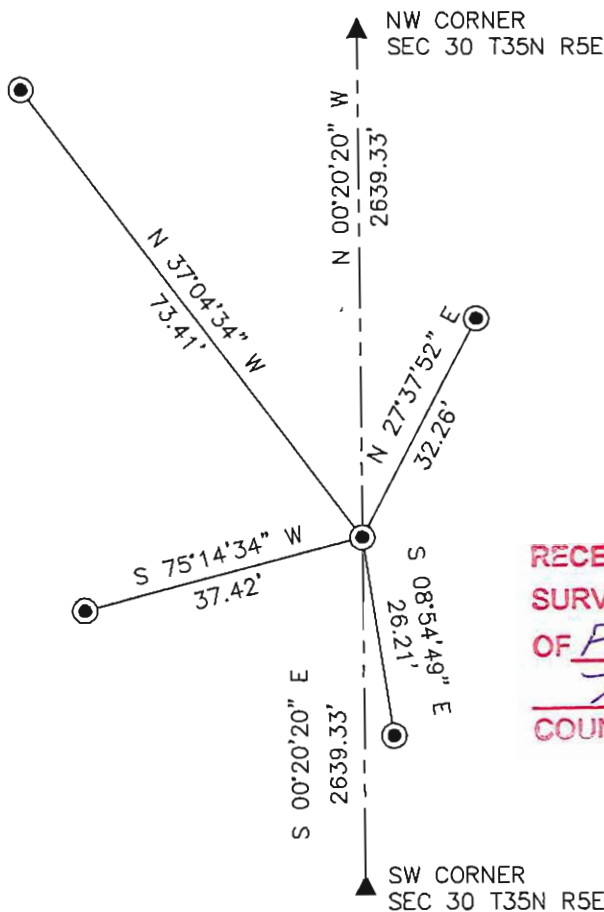


(b) HISTORY OF ORIGINAL CORNER:
 ORIGINAL SURVEYOR: ALFRED MILLARD AUG 1860 – SEPT 1860
 SPRUCE 5 N 15° W 8 LINKS
 SPRUCE 5 S 50° E 22 LINKS

(f)(g)(h) DESCRIPTION OF MONUMENT FOUND AT THIS CORNER AND IF IT WAS ACCEPTED STATE ALL EVIDENCE (MATERIAL, TESTIMONIAL, OCCUPATIONAL, PLATS, RECORDS, OTHER MONUMENTS) USED AS A BASIS FOR ESTABLISHING LOCATION. IF REESTABLISHED THROUGH LOST CORNER PROPORTIONATE METHODS, INDICATE ALL MONUMENTS, DISTANCES, AND DIRECTIONS USED TO ESTABLISH. INDICATE TYPE OF MONUMENT AND SIGN POST FOUND OR SET.

5 FEBRUARY 2012: SEARCH OF AREA REVEALED NO EVIDENCE OF CORNER. SET A LINCOLN COUNTY DRIVE-ABLE ALUMINUM MONUMENT BY SINGLE PROPORTIONATE MEASUREMENT BETWEEN THE NORTHWEST CORNER OF SECTION 30 T35N R5E AND THE SOUTHWEST CORNER OF SECTION 31 T35N R5E (SEE SHEET 2 OF 2). ALSO SET NEW WITNESS MONUMENTS

(c)(d)(e) PLAN VIEW OF CORNER WITH TIES TO AT LEAST FOUR WITNESSES. IF IN DISAGREEMENT WITH PREVIOUSLY ESTABLISHED CORNER, SHOW THE DISTANCE BETWEEN THE TWO CORNERS AND ALSO INDICATED THE TIE TO THE DISPUTED CORNER.



● = LINCOLN COUNTY DRIVE-ABLE ALUMINUM MONUMENT SET

RECEIVED BY LINCOLN COUNTY
 SURVEYOR THIS 22ND DAY
 OF February 20, 12
Tommy Dahl
 COUNTY SURVEYOR

SHEET 1 OF 2



I DARREN B. KRZANOWSKI, REGISTERED LAND SURVEYOR NO. 2663, HEREBY CERTIFY THAT THE CORNER LOCATION ON THIS RECORD WAS REFERENCED BY ME OR UNDER MY DIRECTION AND CONTROL AND THAT THIS U.S. PUBLIC LAND SURVEY MONUMENT RECORD IS COMPLETE TO THE BEST OF MY KNOWLEDGE AND BELIEF.

Darren B. Krzanowski

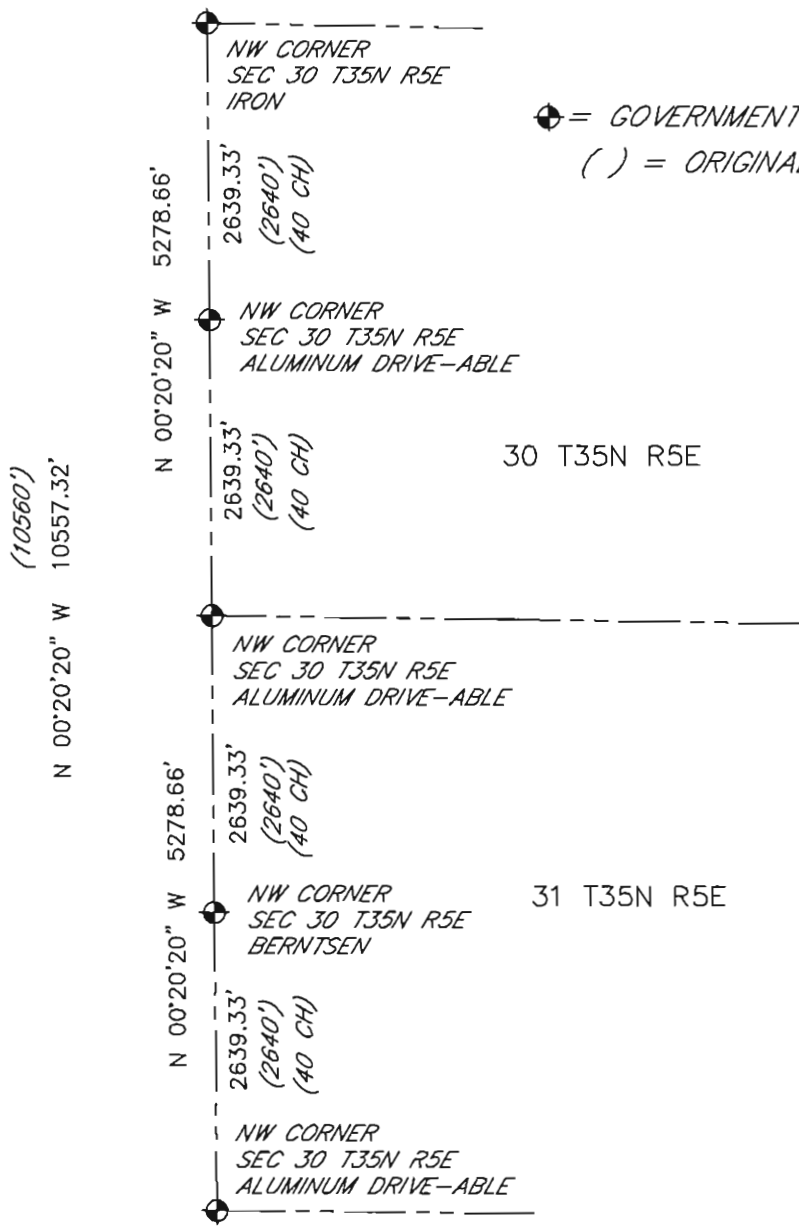
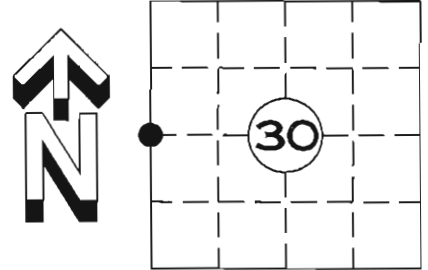
DARREN B. KRZANOWSKI RLS 2663
 DATED THIS 20TH DAY OF FEBRUARY, 2012

INDEX NO. T35N R5E S1

U.S. PUBLIC LAND SURVEY MONUMENT RECORD

NOTE: THIS FORM IS INTENDED AND DESIGNED TO FULFILL ALL REQUIREMENTS OF WISCONSIN ADMINISTRATIVE CODE CHAPTER A-E 7.08 U.S. PUBLIC LAND SURVEY MONUMENT RECORD (3) (a)(b)(c)(d)(e)(f)(g)(h)(i). AN ADDITIONAL SHEET MAY BE ADDED IF NECESSARY TO CONFIRM WITH SAID REQUIREMENTS.

(a) CORNER LOCATION: W1/4 CORNER
SECTION 30, TOWNSHIP 35 NORTH, RANGE 5 EAST
TOWN OF WILSON, LINCOLN COUNTY



⊕ = GOVERNMENT CORNER LOCATION
() = ORIGINAL SURVEY

RECEIVED BY LINCOLN COUNTY
SURVEYOR THIS 22ND DAY
OF February 20 12
Tom Dalk
COUNTY SURVEYOR

SHEET 2 OF 2



INDEX NO. T35N R5E S1

I DARREN B. KRZANOWSKI, REGISTERED LAND SURVEYOR NO. 2663, HEREBY CERTIFY THAT THE CORNER LOCATION ON THIS RECORD WAS REFERENCED BY ME OR UNDER MY DIRECTION AND CONTROL AND THAT THIS U.S. PUBLIC LAND SURVEY MONUMENT RECORD IS COMPLETE TO THE BEST OF MY KNOWLEDGE AND BELIEF.

Darren B. Krzanowski
DARREN B. KRZANOWSKI RLS 2663
DATED THIS 20TH DAY OF FEBRUARY, 2012







PLEASE
DO NOT
DISTURB
NEARBY
S M U A



