

# U.S. PUBLIC LAND SURVEY MONUMENT RECORD

NOTE: THIS FORM IS INTENDED AND DESIGNED TO FULFILL ALL REQUIREMENTS OF WISCONSIN ADMINISTRATIVE CODE, CHAPTER A-E 7.08, U.S. PUBLIC LAND SURVEY MONUMENT RECORD (3)(a)(b)(c)(d)(e)(f)(g)(h)(i). ADDITIONAL SHEETS MAY BE NECESSARY TO CONFORM TO SAID REQUIREMENTS.

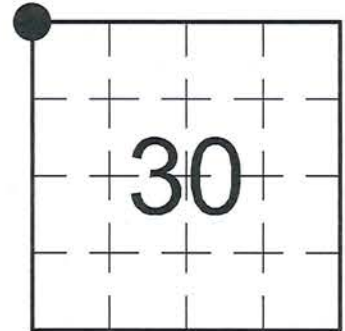
T 35 N, R 5 E

**(a) CORNER LOCATION:**

NORTHWEST CORNER, SECTION 30  
 TOWNSHIP 35 NORTH  
 RANGE 5 EAST  
 TOWN OF WILSON  
 LINCOLN COUNTY  
 WISCONSIN

**(b) HISTORY OF ORIGINAL CORNER:**

ORIGINAL SURVEYOR: Alfred Millard; Set post  
 COMMENCING DATE: August 8, 1860  
 COMPLETION DATE: September 11, 1860  
 ORIGINAL BEARING TREES:  
 7" Fir; S 58° E; 12 links  
 8" Fir; S 62° W; 12 links  
 7" Fir; N 30° W; 25 links  
 10" Fir; N 62° E; 26 links



**(f)(g)(h) DESCRIPTION OF MONUMENT FOUND AT THIS CORNER AND IF IT WAS ACCEPTED. STATE ALL EVIDENCE (MATERIAL, TESTIMONIAL, OCCUPATIONAL, PLATS, RECORDS, OTHER MONUMENTS) USED AS A BASIS FOR ESTABLISHING LOCATION. IF RE-ESTABLISHING THROUGH LOST CORNER PROPORTIONATE METHODS, INDICATE ALL MONUMENTS, DISTANCES, AND DIRECTIONS USED TO ESTABLISH. INDICATE TYPE OF MONUMENTS FOUND OR SET.**

12/04/1924 - D.S. Burnett, Civil Engineer, set a monument (2.5" o.d. Iron Pipe with steel plate atop) at the corner location identified by a stake set by Vaughan.

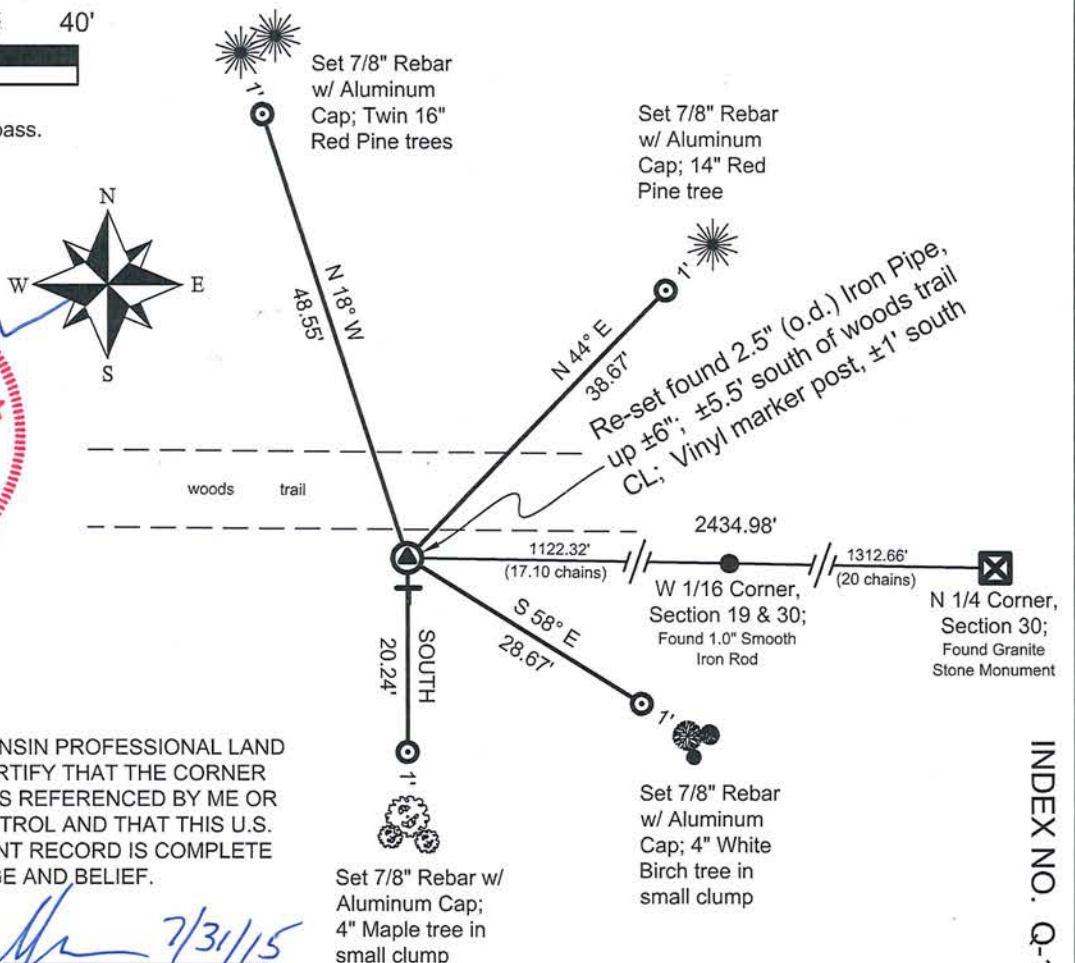
03/09/2011 - I, Anthony R. Dallman, PLS-2405, found Burnett's 2.5" (o.d.) Iron Pipe dug out of the ground with no steel plate remaining. I located a 1.0" Smooth Iron Rod at the 1/16 corner east of this location in good condition, flush with the ground surface. I computed a position for the NW Corner by projecting a straight line westerly from the N 1/4 of Section 30 though said found 1/16 Corner, using a prorated distance from said 1/4 and 1/16 Corners. I re-set the found 2.5" (o.d.) Iron Pipe with bent iron rod within it, leaving it ±6" above the ground surface, ±5.5' south of a woods trail centerline.

05/05/2015 - I, Anthony R. Dallman, PLS-2405, returned to corner and verified its location per previous Lincoln County coordinates. I set new reference ties to perpetuate the corner location, as shown in the sketch below.

**(c)(d)(e) PLAN VIEW OF THE CORNER WITH TIES TO AT LEAST FOUR WITNESSES. IF IN DISAGREEMENT WITH PREVIOUSLY ESTABLISHED CORNER, SHOW THE DISTANCES BETWEEN THE TWO CORNERS AND ALSO THE TIES TO THE DISPUTED CORNER.**



- Tie bearings by hand-held compass.  
 - Tie distances by steel tape.



I, ANTHONY R. DALLMAN, WISCONSIN PROFESSIONAL LAND SURVEYOR, S-2405, HEREBY CERTIFY THAT THE CORNER LOCATION ON THIS RECORD WAS REFERENCED BY ME OR UNDER MY DIRECTION AND CONTROL AND THAT THIS U.S. PUBLIC LAND SURVEY MONUMENT RECORD IS COMPLETE TO THE BEST OF MY KNOWLEDGE AND BELIEF.

*Anthony R. Dallman* 7/31/15  
 ANTHONY R. DALLMAN, PLS S-2405

INDEX NO. Q-1









