

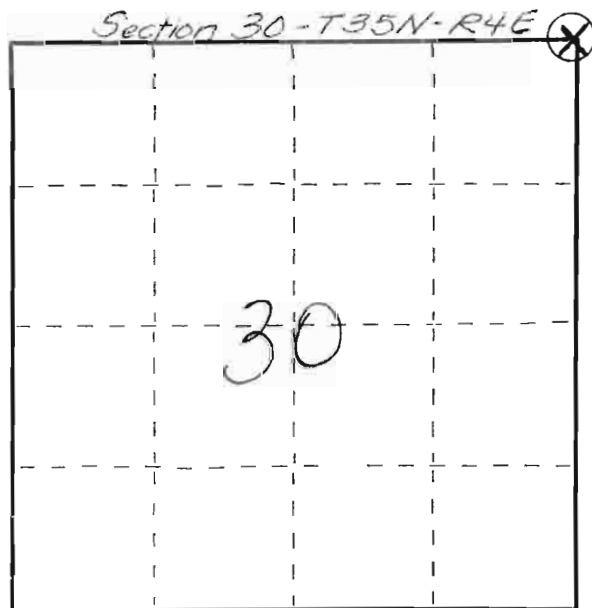
CERTIFIED LAND CORNER RESTORATION

Index No. Q-5

State of Wisconsin }
County of Portage } ss.

I, Joseph S. Glodowski, do hereby certify that on the 26 day of January, 1982, I found evidence of the Northeast corner of Section 30 Township 35 North, Range 4 East, Fourth, Principal Meridian, as described hereon; and that from this evidence I established a new monument and accessories as described hereon to perpetuate the original location of this corner.

Resident witnesses:



○ = Corner monument restored.

History of original corner establishment:

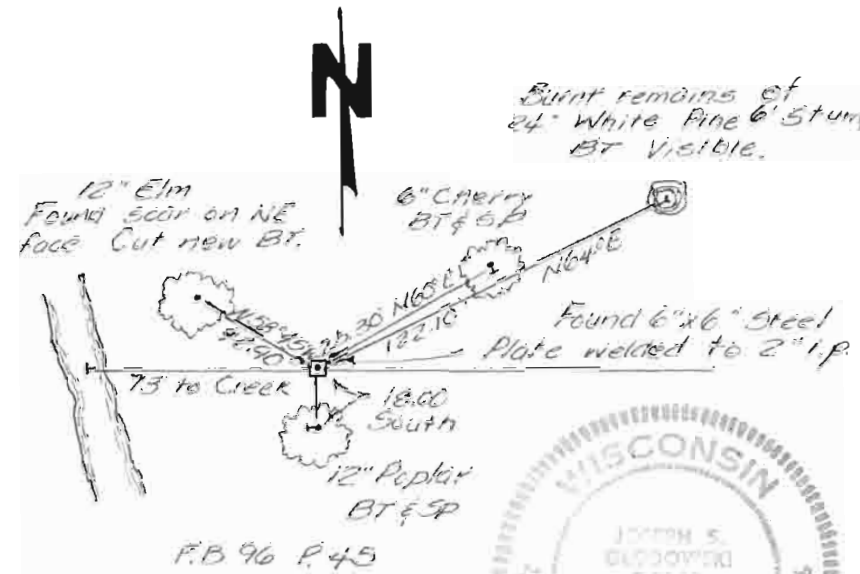
This corner was set in the original government survey - This corner was recovered and monumented in a resurvey in 1923 believe by Robert Jakoubek

Description of corner evidence found:

Found burned remains of 24" W. Pine BT NE quadrant - 6' stump - BT visible. Found 6"x6" steel plate welded to 2 inch iron pipe on corner.

Description of monument and accessories I established to perpetuate the original location of this corner.

Set three new Bearing Trees - scribing each on a blaze facing the corner & driving spike in the base at ground level. Corner well monumented and retained - Verified location by traversing the entire section.



Dated at Stevens Point, Wis., this 28 day of June, 1982.

Signature: Joseph S. Glodowski Title: Registered Land Surveyor Registration No. S-1333
(County Surveyor, Registered Land Surveyor, or other duly authorized official)

Office of Register of Deeds, County of _____, I hereby certify that the within instrument was filed in this office for record on the _____ day of _____, 19____ at _____ o'clock _____ M.

(Register of Deeds)

By _____ Deputy









