

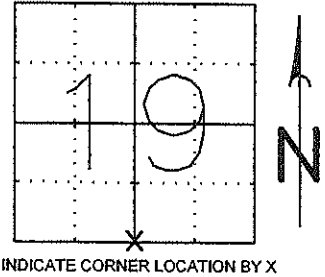
U.S. PUBLIC LAND SURVEY MONUMENT RECORD

NOTE: THIS FORM IS INTENDED AND DESIGNED TO FULFILL ALL REQUIREMENTS OF WISCONSIN ADMINISTRATIVE CODE, CHAPTER A-E 7.08, U.S. PUBLIC LAND SURVEY MONUMENT RECORD (3) (A) (B) (C) (D) (E) (F) (G) (H) (I). AN ADDITIONAL SHEET MAY BE ADDED IF NECESSARY TO CONFORM WITH SAID REQUIREMENTS.

LINCOLN COUNTY

(A) SECTION 19 CORNER IDENTITY S 1/4 BERNTSEN
 TOWNSHIP 35 NORTH
 RANGE 4 EAST
 TOWN, CITY, VILLAGE SOMO

FOUND
 SET
 TIED
 RETIED



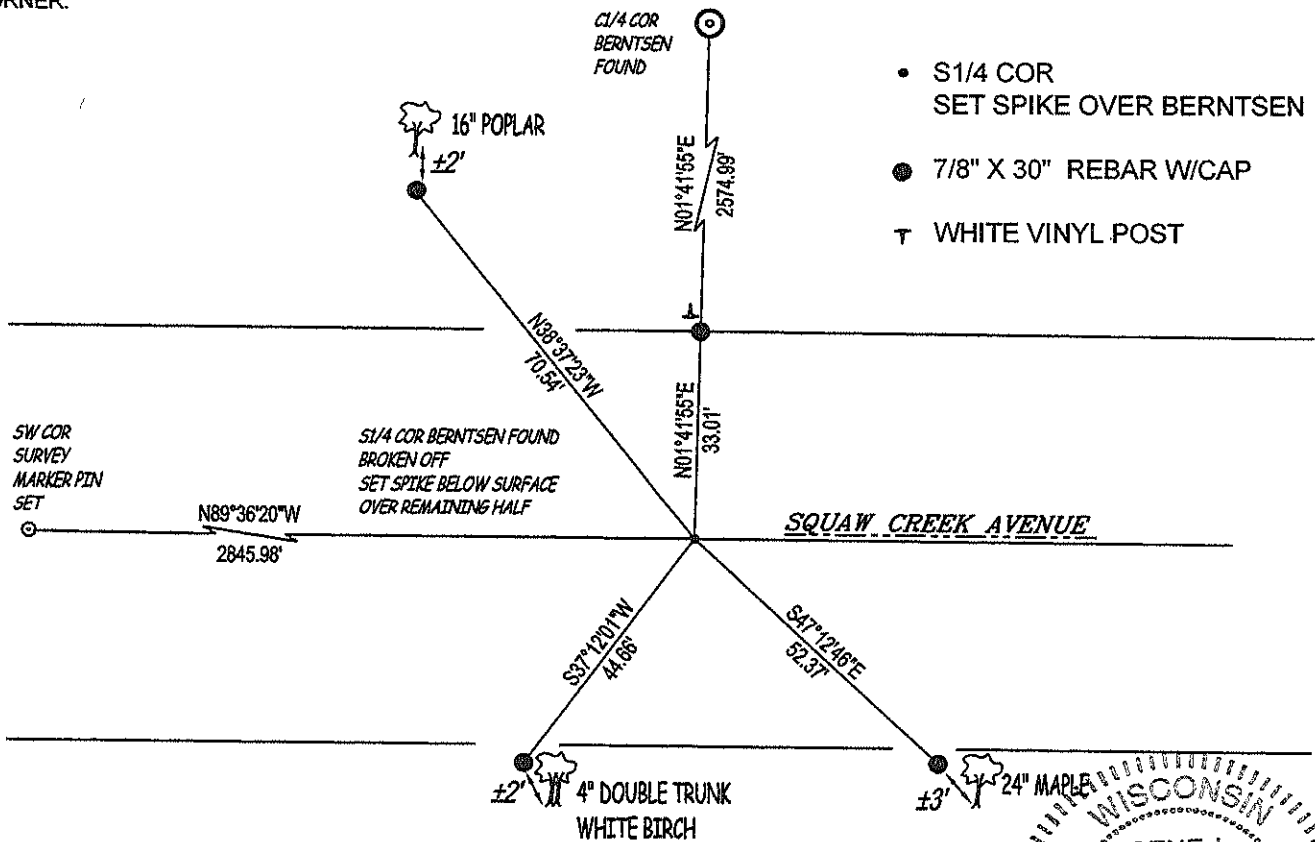
INDICATE CORNER LOCATION BY X

(B) (F) (G) (H) DESCRIPTION OF MONUMENT FOUND AT THIS CORNER AND IF IT WAS ACCEPTED, STATE ALL EVIDENCE (MATERIALS, TESTIMONIAL, OCCUPATIONAL, PLATS, RECORDS, OTHER MONUMENTS) USED AS A BASIS FOR ACCEPTING. IF NOT ACCEPTED OR IF NOTHING WAS FOUND, STATE EVIDENCE USED AS A BASIS FOR ESTABLISHING LOCATION. IF REESTABLISHED THROUGH LOST CORNER PROPORTIONATE METHODS, INDICATE ALL MONUMENTS, DISTANCES, AND DIRECTIONS USED TO ESTABLISH.

ONLY ONE TIE REMAINED TO A POWER POLE. PULLED AND ARC AND FOUND A BEEP. FOUND THE UPPER 1/2 OF BERNTSEN MONUMENT. REMOVED AND FOUND REMAINING LOWER 1/2 INTACT ABOUT 1 FOOT BELOW THE SURFACE OF ROAD. HELD THE REMAINING BERNTSEN AND SET A SPIKE JUST BELOW THE SURFACE OVER THE REMAINING HALF. SET FOUR TIES WITH WITNESS POSTS.

RECEIVED BY LINCOLN COUNTY SURVEYOR THIS 19TH DAY OF June 20 09
Tom Dahl
 COUNTY SURVEYOR

(C) (D) (E) PLAN VIEW OF CORNER WITH TIES TO AT LEAST 4 WITNESS MONUMENTS. IF IN DISAGREEMENT WITH PREVIOUSLY ESTABLISHED CORNER, SHOW THE DISTANCES BETWEEN THE TWO CORNERS AND ALSO INDICATE THE TIES TO THE DISPUTED CORNER.



- S 1/4 COR SET SPIKE OVER BERNTSEN
- 7/8" X 30" REBAR W/CAP
- † WHITE VINYL POST

(I) I, GENE J. WADZINSKI RLS 2400
 (TYPE OR PRINT NAME, LICENSE #) CERTIFY THAT THE CORNER LOCATION ON THIS RECORD WAS DETERMINED BY ME OR UNDER MY DIRECTION AND CONTROL AND THAT THIS U.S. PUBLIC LAND SURVEY MONUMENT RECORD IS CORRECT AND COMPLETE TO THE BEST OF MY KNOWLEDGE AND BELIEF.

SIGNATURE *GJW* DATE 6/18/09



CERTIFIED LAND CORNER RESTORATION

Index No. Q-3

State of Wisconsin }
County of Portage } ss.

I Joseph S. Glodowski, do hereby certify that on the 6 day of April, 1982, I found evidence of the North quarter corner of Section 30

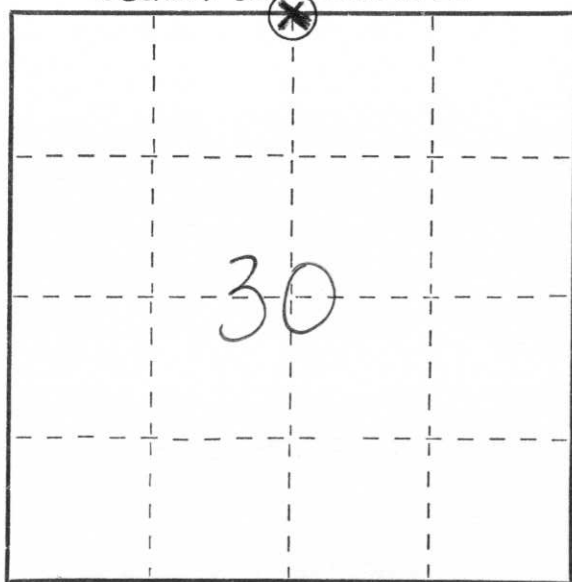
Township 35, North, Range 4 East, Fourth, Principal Meridian,

as described hereon; and that from this evidence I established a new monument and accessories as described hereon to perpetuate the original location of this corner.

Resident witnesses:

.....
.....
.....

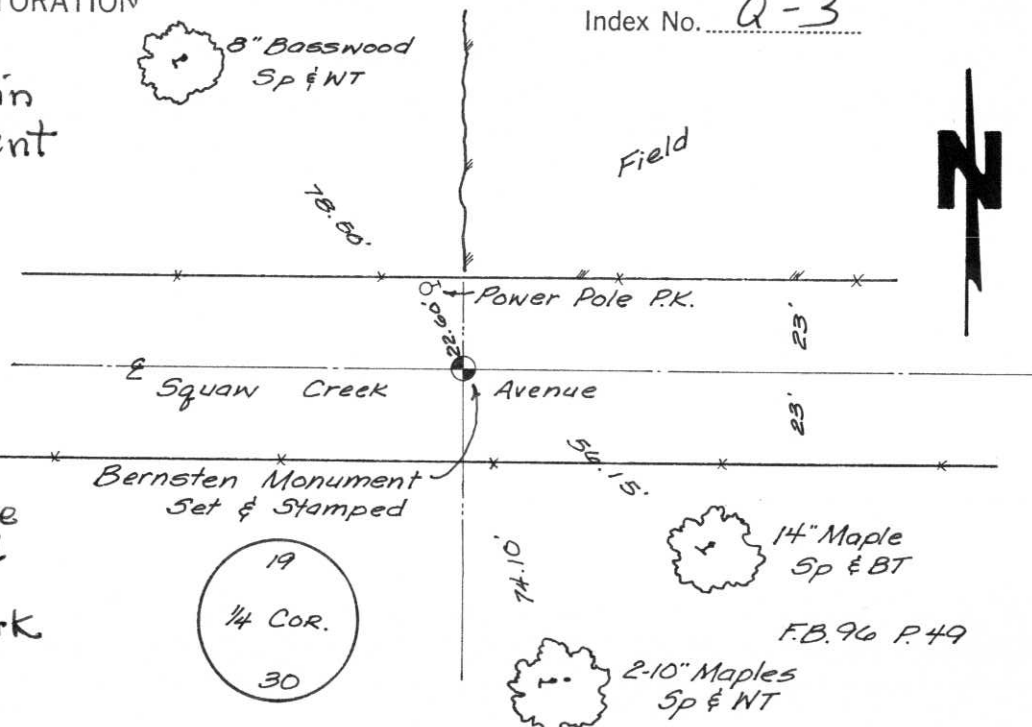
Section 30 T35N R4E



○ = Corner monument restored.

History of original corner establishment:
This corner was set in the original government survey.

8" Basswood Sp & NT



Description of corner evidence found:
Corner location was determined by a traverse of the entire section & use of all available evidence comparing with original field notes - Data fed into computer. Field work with Wild Theodolite & EDM

Description of monument and accessories I established to perpetuate the original location of this corner:
Berntsen cast aluminum monument placed on corner; tied to fences & trees which were blazed & scribed and spike driven in base of tree at ground level. Blazes face corner monument.

Dated at Stevens Point, Wis., this 28 day of June, 1982.

Signature Joseph S. Glodowski Title Registered Land Surveyor Registration No. S-1333
(County Surveyor, Registered Land Surveyor, or other duly authorized official)

Office of Register of Deeds, County of _____, I hereby certify that the within instrument was filed in this office for record on the _____ day of _____, 19____ at _____ o'clock _____ M.

(Register of Deeds)

By _____ Deputy