

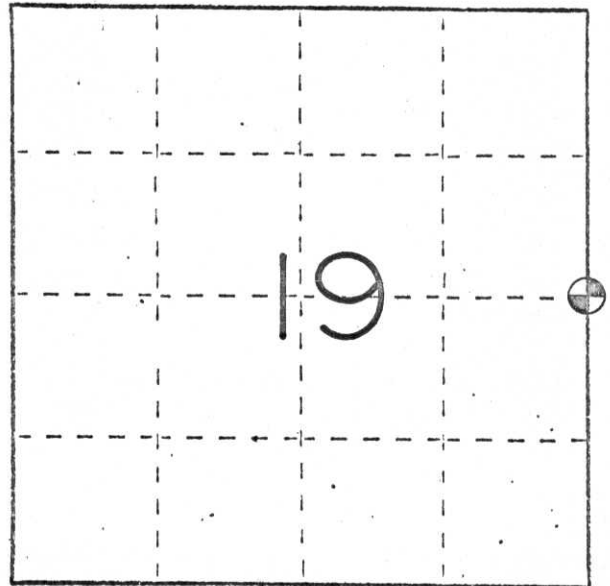
# U. S. PUBLIC LAND SURVEY MONUMENT RECORD

**INSTRUCTIONS:** This record shall show the location of the corner and shall include all of the following nine elements (a through i).

- (a) Identify the corner by reference to the U.S. public land survey system.  
 ○ = Corner monument restored.

East  $\frac{1}{4}$  corner of Sec. 19, T. 35 N.,  
 R. 4 E., Lincoln County, Wi.

West  $\frac{1}{4}$  corner Sec. 20, T. 35 N.,  
 R. 4 E., Lincoln County, Wi.



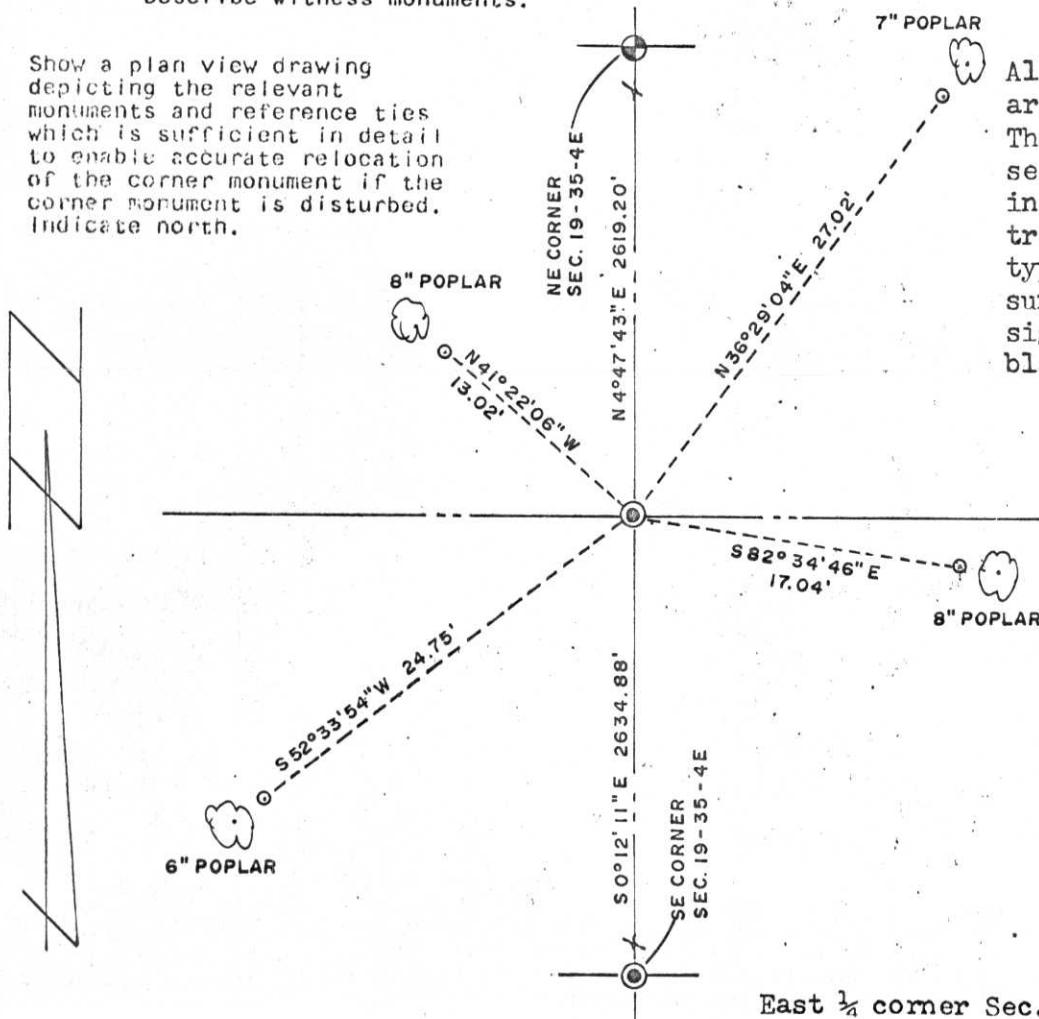
**T. 35 N., R. 4 E.**

- (b) Describe any record evidence, monument evidence, occupational evidence, testimonial evidence or any other material evidence you considered, and whether the monument was found or placed.

A 2" iron pipe was found at the corner location. This was left in place. Reportedly, this pipe was set in 1923. It was assumed that the found pipe is of the same type as found at the North  $\frac{1}{4}$  of Sec. 19 and therefore is 48" long with a steel plate on the bottom. There is a steel plate on the top.

- (c) In the plan view drawing below, provide reference ties to at least 4 witness monuments, or, if the location is within a municipality, to at least 2 witness monuments. (Witness monuments shall be made of concrete, natural stone, iron or other equally durable material.) Describe witness monuments.

- (d) Show a plan view drawing depicting the relevant monuments and reference ties which is sufficient in detail to enable accurate relocation of the corner monument if the corner monument is disturbed. Indicate north.



All witness monuments are 1"x24" iron pipe. The witness pipe are set 2' more or less, in front of blazed trees. See sketch for type of tree. A survey marker warning sign was nailed to the blazed tree.

5-0

(e) Describe any material discrepancy between the location of the corner as restored or reestablished and the location of that corner as previously restored or reestablished by distance and direction. Show the discrepancy on the plan view drawing under (d), above. Show the distances between the corner as previously restored or reestablished and (1) the corner as restored or reestablished, and (2) to at least 2 of the witness monuments shown on the drawing in (d), above.

(f) Was the corner restored through acceptance of (1) an obliterated evidence location, or, (2) a found perpetuated location?

A found perpetuated location

(g&h) Was the corner reestablished through lost corner proportionate methods? If so, show the method, including the directions and distances to other public land survey corners used as evidence or used for proportioning in determining the corner location?

TAX DESCRIPTION OFFICE  
 \_\_\_\_\_  
 OF \_\_\_\_\_ 19\_\_\_\_  
 COURT HOUSE THIS \_\_\_\_\_ DAY  
 RECEIVED AT LINCOLN COUNTY

RECEIVED AT LINCOLN COUNTY  
 COURTHOUSE THIS 7 DAY  
 OF Jan 1983  
Pat Priebe  
 TAX DESCRIPTION OFFICE

*Charles Offerman*

1/5/83

(i) I, Charles Offerman (type or print name) certify that the corner location shown on this record was determined by me or under my direction and control and that this U.S. Public Land Survey Monument Record is correct and complete to the best of my knowledge and belief.

