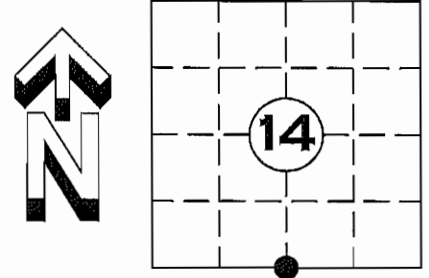


U.S. PUBLIC LAND SURVEY MONUMENT RECORD

NOTE: THIS FORM IS INTENDED AND DESIGNED TO FULFILL ALL REQUIREMENTS OF WISCONSIN ADMINISTRATIVE CODE CHAPTER A-E 7.08 U.S. PUBLIC LAND SURVEY MONUMENT RECORD (3) (a)(b)(c)(d)(e)(f)(g)(h)(i). AN ADDITIONAL SHEET MAY BE ADDED IF NECESSARY TO CONFIRM WITH SAID REQUIREMENTS.

(a) CORNER LOCATION: S¼ CORNER
SECTION 14, TOWNSHIP 35 NORTH, RANGE 4 EAST
TOWN OF SOMO, LINCOLN COUNTY
LINCOLN COUNTY COORDINATES:
NORTHING: 243401.286
EASTING: 325656.140



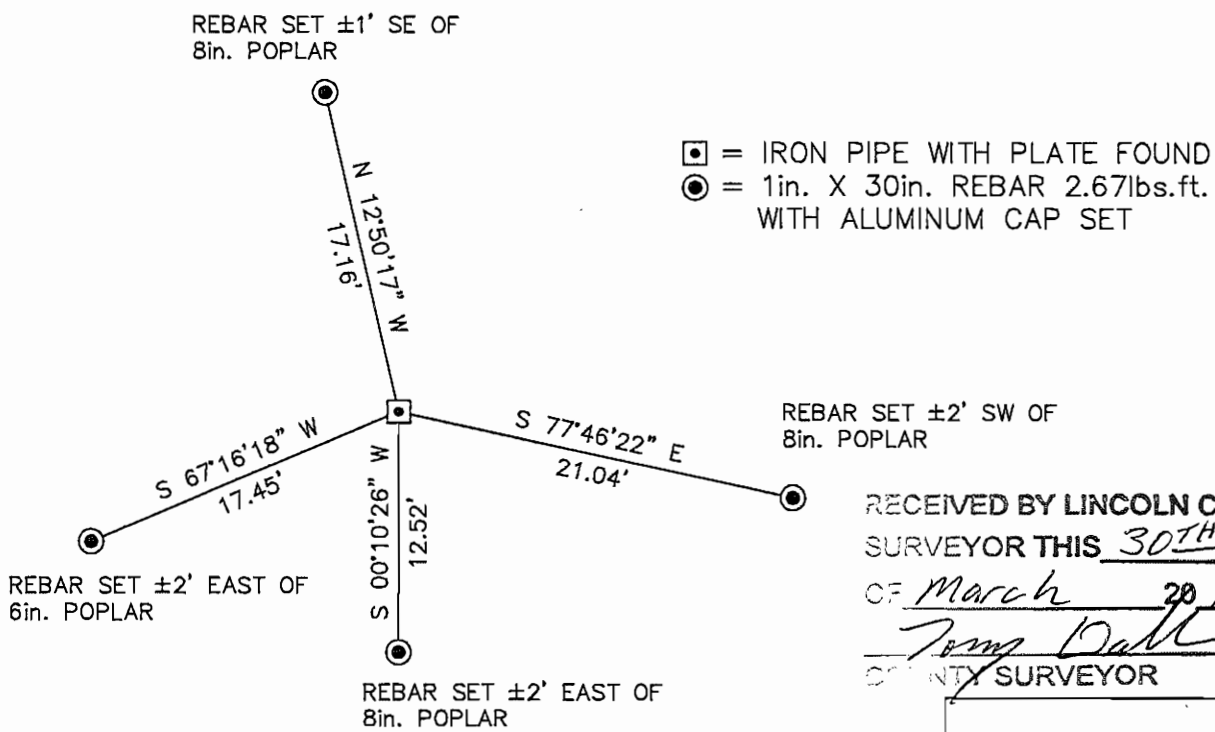
(b) HISTORY OF ORIGINAL CORNER:
ORIGINAL SURVEYOR: EDWARD D. PALMER APRIL 1865 – MAY 1865
W. PINE 24° N 46° W 141ks
FIR 3 S 15° W 91ks

(f)(g)(h) DESCRIPTION OF MONUMENT FOUND AT THIS CORNER AND IF IT WAS ACCEPTED STATE ALL EVIDENCE (MATERIAL, TESTIMONIAL, OCCUPATIONAL, PLATS, RECORDS, OTHER MONUMENTS) USED AS A BASIS FOR ESTABLISHING LOCATION. IF REESTABLISHED THROUGH LOST CORNER PROPORTIONATE METHODS, INDICATE ALL MONUMENTS, DISTANCES, AND DIRECTIONS USED TO ESTABLISH. INDICATE TYPE OF MONUMENT AND SIGN POST FOUND OR SET.

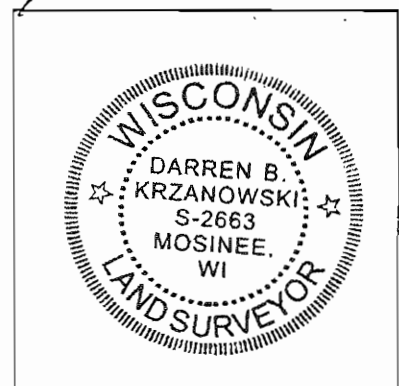
3 DECEMBER 1924 D.S. BURNETT; IDENTIFIED BY SCRIBE STAKE AND ORIG. B.T. W. PINE (STUMP) 24° N 46° W 141ks. SET MONUMENT AND TOOK NEW BEARINGS, W. BIRCH 20° N 64° W 361ks S. MAPLE 16° N 16° E 381ks.

26 MARCH 2012: FOUND AN IRON PIPE WITH PLATE ON TOP. MONUMENT CONSISTENT WITH THOSE SET BY D.S. BURNETT IN 1923-1924 SURVEY. ACCEPTED MONUMENT AND SET NEW WITNESS MONUMENTS.

(c)(d)(e) PLAN VIEW OF CORNER WITH TIES TO AT LEAST FOUR WITNESSES. IF IN DISAGREEMENT WITH PREVIOUSLY ESTABLISHED CORNER, SHOW THE DISTANCE BETWEEN THE TWO CORNERS AND ALSO INDICATED THE TIE TO THE DISPUTED CORNER.



RECEIVED BY LINCOLN COUNTY
SURVEYOR THIS 30TH DAY
OF March 20 12
Tom Dahl
COUNTY SURVEYOR



INDEX NO. T35N R4E M19

I DARREN B. KRZANOWSKI, REGISTERED LAND SURVEYOR NO. 2663, HEREBY CERTIFY THAT THE CORNER LOCATION ON THIS RECORD WAS REFERENCED BY ME OR UNDER MY DIRECTION AND CONTROL AND THAT THIS U.S. PUBLIC LAND SURVEY MONUMENT RECORD IS COMPLETE TO THE BEST OF MY KNOWLEDGE AND BELIEF.

Darren B. Krzanowski

DARREN B. KRZANOWSKI RLS 2663
DATED THIS 28TH DAY OF MARCH 2012

