

# U S PUBLIC LAND SURVEY MONUMENT RECORD

NOTE: This form is intended and designed to fulfill all requirements of Wisconsin Administrative Code, Chapter A-E 7.08 U.S. Public Land Survey Monument Record (3) (a-i)

A-E 7.08(3)(a) Identity of corner:  
 SOUTHEAST CORNER SECTION 15,  
 TOWNSHIP 35 NORTH,  
 RANGE 04 EAST OF THE 4TH PM,  
 TOWN OF SOMO,  
 COUNTY OF LINCOLN

WISCORS - LINCOLN COUNTY  
 N: 243,254.557 USft (243,254.543)  
 E: 322,991.027 USft (322,991.053)  
 Datum: NAD83 (2011)  
 GNSS Method RTN - Direct  
 GNSS Control WISCORS VRS



The coordinate value shown has been verified by the average of two or more GPS observations at a markedly different time. Coordinates shown in parenthesis are provided by Lincoln County.

A-E 7.08(3)(b)

Original Surveyor: Edward D. Palmer

Date of Original Survey	Commenced:	April 22, 1865	Original Accessories:		
	Completed:	May 5, 1865	Cedar	6	N 15° W 10 Links
			Cedar	4	N 65° E 15 Links
			Cedar	4	S 43° E 18 Links
			Cedar	5	S 32° W 8 Links

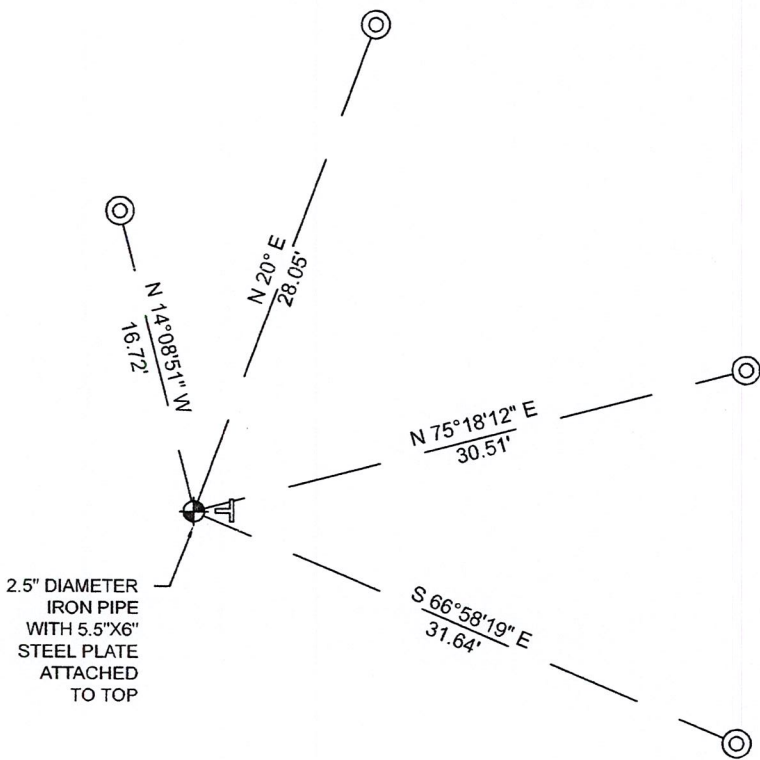
December 3, 1924 - Surveyor D.S. Burnett - found all 4 original witnesses and set 3 new witnesses:

Hemlock	7"	S. 41° E.	24
Cedar	7"	S. 5 E.	15 1/2
Hemlock	7"	N. 76° E.	39 1/2

Burnett is presumed to have set iron pipe monuments with steel plate attached by iron rod.

October 19, 2022 - While performing the 2022 Lincoln County PLSS Corner Remonumentation and GPS Services project, I found a 2.5" diameter iron pipe, with a 5.5" x 6" steel plate attached to the top by a bent .5" diameter iron rod. The monument is near the computed position provided by Lincoln County, and extends ±18" above ground. I established 4 new reference monuments as shown below.

A-E 7.08(3)(c)(d) Plan view of corner with references to at least 4 witness monuments.



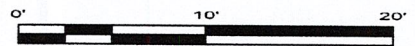
BEARINGS LISTED TO THE NEAREST SECOND ARE REFERENCED TO WISCONSIN COUNTY COORDINATE REFERENCE SYSTEM - LINCOLN COUNTY ZONE. ALL OTHER BEARINGS ARE MAGNETIC



RECEIVED BY LINCOLN COUNTY  
 SURVEYOR THIS 27<sup>TH</sup> DAY  
 OF December 20 22  
*Jeffrey DeMuth*  
 COUNTY SURVEYOR

## LEGEND

- 2.5" diameter iron Pipe, found
- 7/8" diameter X 30" long - iron rod with 2" diameter aluminum cap, set
- Vinyl T-post, set ±1.0 feet east of corner



A-E 7.08(3)(e) 1865 Surveyor set a post, 1924 Surveyor found original bearing trees and set a monument. I found a 2.5" diameter iron pipe with a 5.5"x6" steel plate attached to it with a 0.5" diameter iron rod.

A-E 7.08(3)(f) I accept this monument as a FOUND PERPETUATED LOCATION of the corner.

A-E 7.08(3)(g)(h) This corner was not determined through lost-corner-proportionate methods.

A-E 7.08(3)(i) I, Jeffrey L. DeMuth, Professional Land Surveyor No. S-2656, hereby certify that the corner location on this record was determined by the Lincoln County Surveyor, and the monuments found or set as shown hereon were measured by me or under my direction and control, and that this U.S. Public Land Survey Monument Record is correct and complete to the best of my knowledge, and belief.

SIGNATURE

December 14, 2022

DATE



11-66

## REPORT

### 2022-Lincoln County PLSS Corner Remonumentation and GPS Services

Wisconsin Corner Point Identification Number: 43504150000

Surveyor: Jeffrey L. DeMuth – S2656

Corner monument: Found 2.5" diameter iron pipe with a 5.5" x 6" steel plat attached by a bent .5" diameter iron rod through center of pipe.

Field Book: Cardinal North – Lincoln Co. Remon. – 2022-00

Page: 54

Horizontal Datum: WisCRS – Lincoln County Zone – NAD83(2011)

Date / time of initial measurement:

October 19, 2022 - Start 15:06:18 CDT – End 15:25:19 CDT

Reference monuments:

4 – Set - 7/8" diameter X 30" long iron rods with 2" diameter Lincoln Co. aluminum cap.

#### Coordinate Table

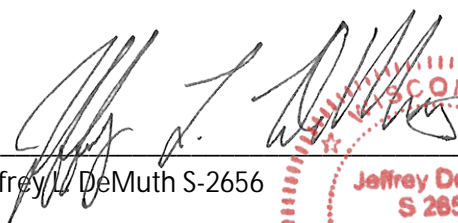
	County Provided	2022 Measurement	Difference
North	243254.543	243254.557	-0.01
East	322991.053	322991.027	0.03

Observed coordinates match with existing coordinates within reason.

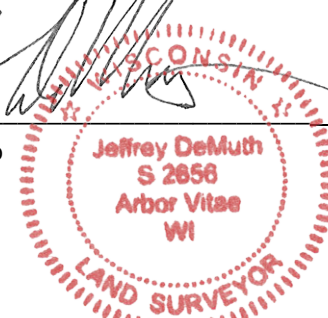
Request Data Log for more information.

Additional Notes:

Monument extends ±18" above grade.

  
Jeffrey L. DeMuth S-2656

November 15, 2022  
Date



43504150000\_Mon-N



43504150000\_North



4350415000\_West



4350415000\_South



4350415000\_East

