

U.S. PUBLIC LAND SURVEY MONUMENT RECORD

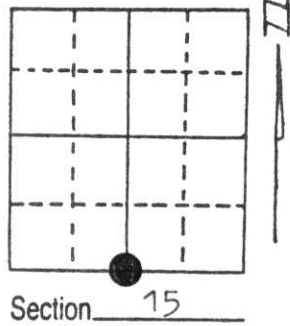
Note: This form is intended and designed to fulfill all requirements of Wisconsin Administrative Code, Chapter A-E 5.02, U.S. Public Land Survey Monument Record (3) (a) (b) (c) (d) (e) (f) (g) (h) (i). An additional sheet may be added if necessary to conform with said requirements.

(a) Corner location: Township 35 North

Range 4 East

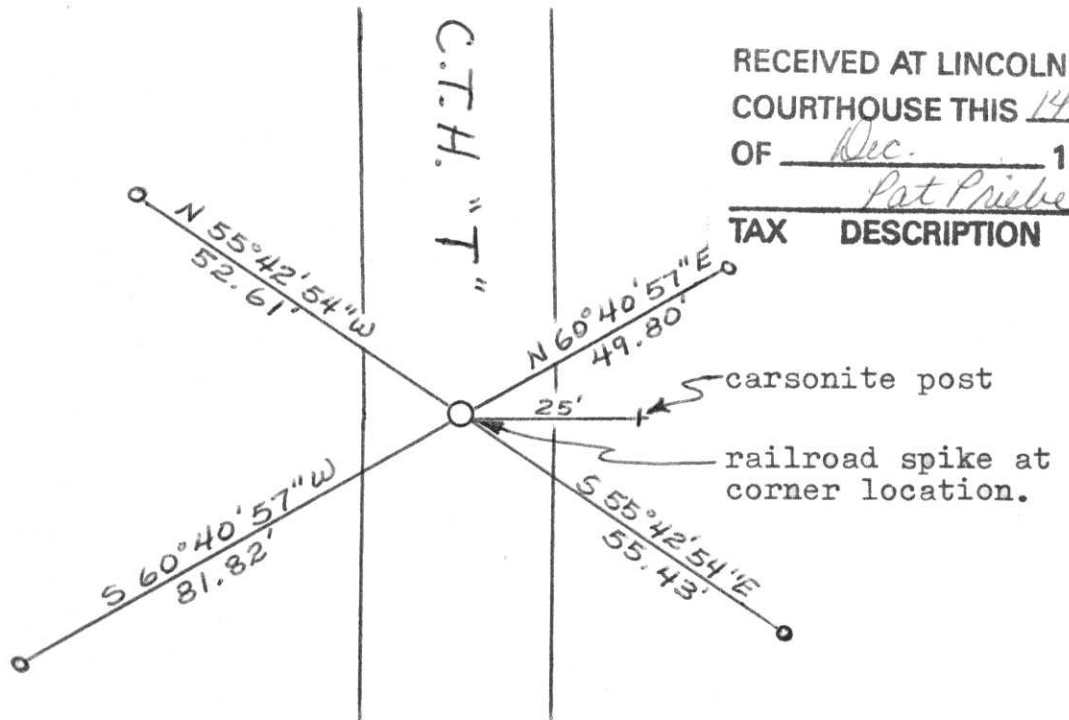
Town/ ~~City/Village~~ Somo

County Lincoln



(b) (f) (g) (h) Description of monument found at this corner and if it was accepted, state all evidence (material, testimonial, occupational, plats, records, other monuments) used as a basis for accepting. If not accepted or if nothing was found, state evidence used as basis for establishing location. If reestablished through lost corner proportionate methods, indicate all monuments, distances and directions used to establish. Original Gov't. Survey: Apr. 1865 by Edward Palmer, set wood post for corner with bearings, hemlock 12 N 23° W 8 links and tamarack 6 S 15° E 21 links. On 25 Oct 95, the Lincoln County Highway Department gradeall was used to dig in County Trunk Highway "T" to locate evidence of this corner. With a Wausau Paper Company location tag on a tree East-Northeast and on the westerly extension of a blue paint line from the east, dug around the centerline of "T", where the remains of the bottom of a wood post were found in the native soil. Set a railroad spike at this location for a temporary corner. The top of the spike being 5" below the surface of the road. A Berntsen monument will be set to replace the railroad spike, after preparatory reconstruction of the roadbed and before the bituminous surface is placed. I referenced this location with 7/8" capped iron rebars as shown below.

(c) (d) (e) Plan view of corner with ties to at least 4 witness monuments. If in disagreement with previously established corner, show the distances between the two corners and also indicate the ties to the disputed corner.



RECEIVED AT LINCOLN COUNTY COURTHOUSE THIS 14th OF Dec. 1995
Pat Priebe
TAX DESCRIPTION OFF

(i) I, Lester J. Schmit
(type or print name) certify that the corner location on this record was determined by me or under my direction and control and that this U.S. Public Land Survey Monument Record is correct and complete to the best of my knowledge and belief.

Lester J. Schmit 11 Dec 95
Signature Date



Index No. 19-15





