

U.S. PUBLIC LAND SURVEY MONUMENT RECORD

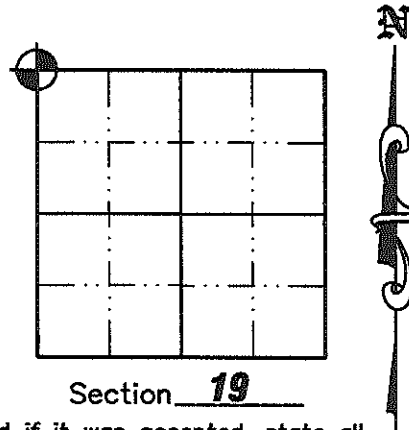
NOTE: This form is intended and designed to fulfill all requirements of Wisconsin Administrative Code, Chapter A-E 7 .08 U.S. Public Land Survey Monument Record (3)(a)(b)(c)(d)(e)(f)(g)(h)(i). An additional sheet may be added if necessary to conform with said requirements.

(a) Corner location: Township 35 North

Range 4 East

Town of Somo

County Lincoln



(b)(f)(g)(h) Description of monument found at this corner and if it was accepted, state all evidence (material, testimonial, occupation, plats, records, other monuments) used as a basis for accepting. If not accepted or if nothing was found, state evidence used as a basis for establishing location. If reestablished through lost corner proportionate methods, indicate all monuments, distances and directions used to establish. Indicate type of monument found or set and sign post.

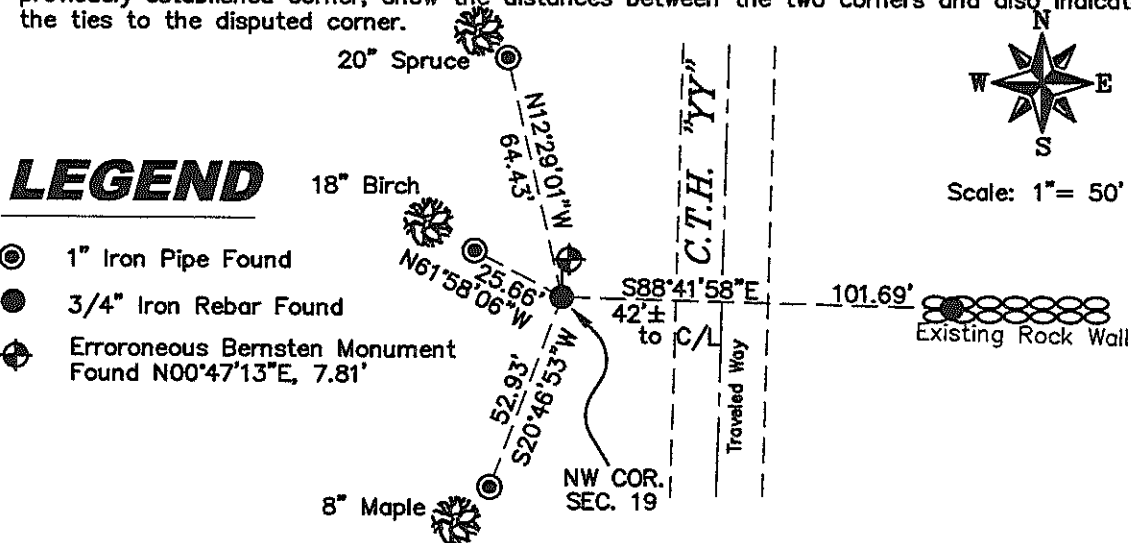
1864— Alex Anderson ran north between 19 and 24, 80.00 set post. BTs; Fir 9, N 70°W 9, Fir 9, N 78°E 14, Hemlock, S35°E 6, Birch, S20W 11.

1982— Charles Offerman set corner by single proportionate measurement between the NW corner of the SW1/4 of the NW1/4 of Sec. 18 and the SW corner of Sec. 19. The NW corner of the SW1/4 of the NW1/4 of Sec. 18 was N00°45'44"W, 3946.62' from this corner and the SW corner of Sec. 19 is S00°45'44"W, 5262.16' from this corner. All bearings were referenced to the east line of the SE1/4 of Sec. 18, assumed as bearing N00°42'E. All witness monuments are 1" X 24" iron pipe. The witness pipes were set 2', more or less, in front of blazed trees. BTs; 18" Birch, N88°09'266"W 23.16', 20" Spruce, N23°06'36"W 56.91', 8" Maple, S65°39'36"E 112.98', 8" Maple, S09°37'14"W 60.36'. An existing fence, more or less on line, was found in place running Easterly of the corner. A Bernsten W-1C monument was set in place.

1999— Devon Vanden Heuvel was at corner and found Bernsten monument, but it didn't match the location that Offerman had said he had set it at. He set 3/4" iron rebar at proper location. See map L266B of Lincoln County Surveyor's Records.

MAY 2008— Matthew E. Hogleund was at corner and found 3/4" iron rebar at the corner location. Reference monuments; 1" I.P., S20°46'53W 52.93', 1" I.P., N61°58'06"W 25.66', 1" I.P., N12°29'01"E 64.43', Erroneous Bernsten monument, N00°47'13"E 7.81', 3/4" iron rebar, S88°41'58"E 101.69'.

(c)(d)(e) Plan view of corner with ties to at least 4 witness monuments. If in disagreement with previously established corner, show the distances between the two corners and also indicate the ties to the disputed corner.



LEGEND

- ⊙ 1" Iron Pipe Found
- 3/4" Iron Rebar Found
- ⊕ Errorneous Bernsten Monument Found N00°47'13"E, 7.81'

(i) I, Matthew E. Hogleund, certify that the corner location on this record was determined by me under my direction and control and that this U.S. Public Land Survey Monument is correct and complete to the best of my knowledge and belief.

Signature Matthew E. Hogleund

Date July 14, 2006

RECEIVED BY LINCOLN COUNTY SURVEYOR THIS 28TH OF October 2008
Zony Dahl
 COUNTY SURVEYOR

M-1

U. S. PUBLIC LAND SURVEY MONUMENT RECORD

INSTRUCTIONS : This record shall show the location of the corner and shall include all of the following nine elements (a through i).

(a) Identify the corner by reference to the U.S. public land survey system.

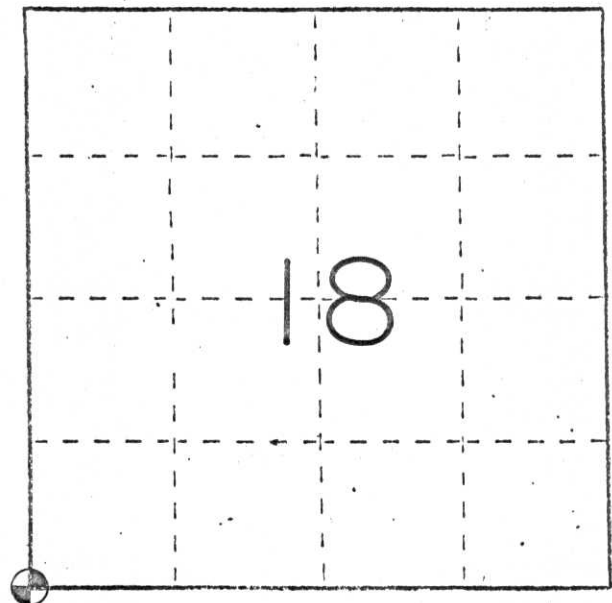
○ = Corner monument restored.

The NW corner of Sec. 19, T. 35 N., R. 4 E., Lincoln County, Wi.

The SW corner of Sec. 18, T. 35 N., R. 4 E., Lincoln County, Wi.

The SE corner of Sec. 13, T. 35 N., R. 3 E., Price County, Wi.

The NE corner of Sec. 24, T. 35 N., R. 3 E., Price County, Wi.



T. 35 N., R. 4 E.

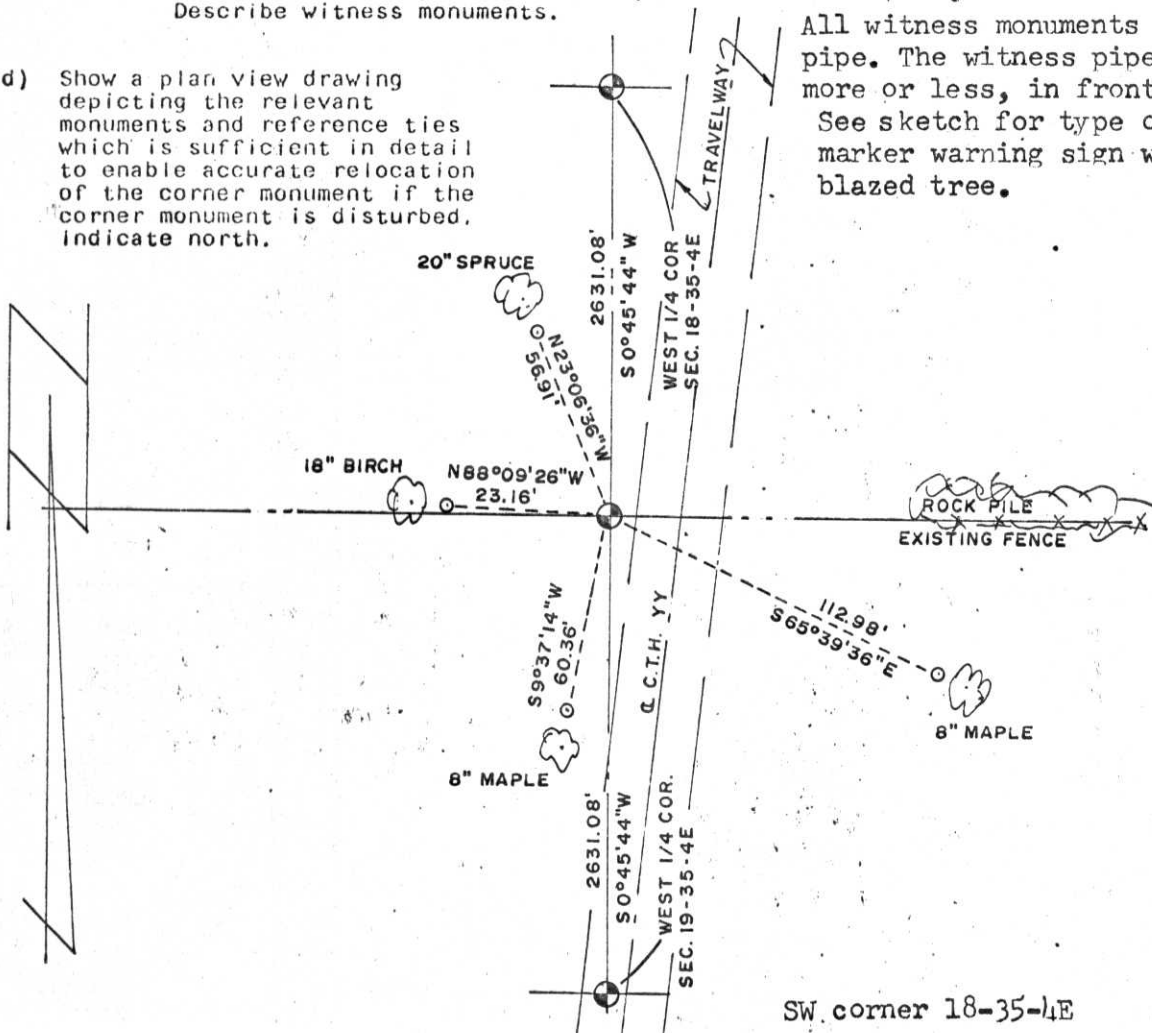
(b) Describe any record evidence, monument evidence, occupational evidence, testimonial evidence or any other material evidence you considered, and whether the monument was found or placed.

An existing fence, more or less on line, was found in place running Easterly of the corner. A Berntsen W-1-C monument was set in place.

(c) In the plan view drawing below, provide reference ties to at least 4 witness monuments, or, if the location is within a municipality, to at least 2 witness monuments. (Witness monuments shall be made of concrete, natural stone, iron or other equally durable material.) Describe witness monuments.

(d) Show a plan view drawing depicting the relevant monuments and reference ties which is sufficient in detail to enable accurate relocation of the corner monument if the corner monument is disturbed. Indicate north.

All witness monuments are 1"x24" iron pipe. The witness pipes are set 2', more or less, in front of blazed trees. See sketch for type of tree. A survey marker warning sign was nailed to the blazed tree.



(e) Describe any material discrepancy between the location of the corner as restored or reestablished and the location of that corner as previously restored or reestablished by distance and direction. Show the discrepancy on the plan view drawing under (d), above. Show the distances between the corner as previously restored or reestablished and (1) the corner as restored or reestablished, and (2) to at least 2 of the witness monuments shown on the drawing in (d), above.

(f) Was the corner restored through acceptance of (1) an obliterated evidence location, or, (2) a found perpetuated location? No

(g&h) Was the corner reestablished through lost corner proportionate methods? If so, show the method, including the directions and distances to other public land survey corners used as evidence or used for proportioning in determining the corner location?

The NW corner of the SW $\frac{1}{4}$ of the NW $\frac{1}{4}$ of Sec. 18 has been previously found in place and monumented by the Wisconsin Department of Transportation. This corner is a 2" iron pipe. The SW corner of Section 19 has been previously monumented and a Berntsen monument was found in place.

This corner was established by single proportionate measurement between the NW corner of the SW $\frac{1}{4}$ of the NW $\frac{1}{4}$ of Sec. 18 and the SW corner of Sec. 19.

The NW corner of the SW $\frac{1}{4}$ of the NW $\frac{1}{4}$ of Sec. 18 is N 0 45' 44" E, 3946.62' from this corner and the SW corner of Section 19 is S 0 45' 44" W, 5262.16' from this corner. All bearings are referenced to the East line of the SE $\frac{1}{4}$ of Sec. 18, assumed as bearing N 0 42' E.

See also the survey maps filed with the Lincoln Co. Surveyor, The Lincoln Co. Forestry Dept., and the Price Co. Surveyor.

RECEIVED AT LINCOLN COUNTY
COURTHOUSE THIS 28 DAY
OF December 1982
Charles Offerman
TAX DESCRIPTION OFFICE

Charles Offerman

(1) I, Charles Offerman 12/26/82
(type or print name) certify that the corner location shown
on this record was determined by me or under my direction and
control and that this U.S. Public Land Survey Monument Record is
correct and complete to the best of my knowledge and belief.

Affix Land Surveyor Seal

