

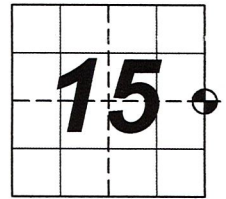
U.S. PUBLIC LAND SURVEY MONUMENT RECORD - WOOD COUNTY

Note: This form is intended and designed to fulfill all requirements of Wisconsin Administrative Code, Chapter A-E 7.08 U.S. Public Land Survey Monument Record (3)(a)(b)(c)(d)(e)(f)(g)(h)(i). An additional sheet may be added to if necessary to conform with said requirements.

(a) Corner Location:

Type of Monument: 2" IP with 5"x6" plate on top
 aka Burnett Monument
 Location: East Quarter Corner
Section 15, Township 35 North, Range 4 East,
 Town of Somo, Lincoln County, Wisconsin

Lincoln County Coordinates NAD83(2011):
Northing: 245874.54
Easting: 322927.26



Sec. 15-T35N-R4E

(b)(f)(g)(h) Description of monument found at this corner and if it was accepted, state all evidence (material, testimonial, occupational, plats, records, other monuments) used as a basis for accepting. If not accepted or if nothing was found, state evidence used as basis for establishing location. If reestablishment through lost corner proportionate methods, indicate all monuments, distances and directions used to establish. Indicate type of monument found or set and sign post.

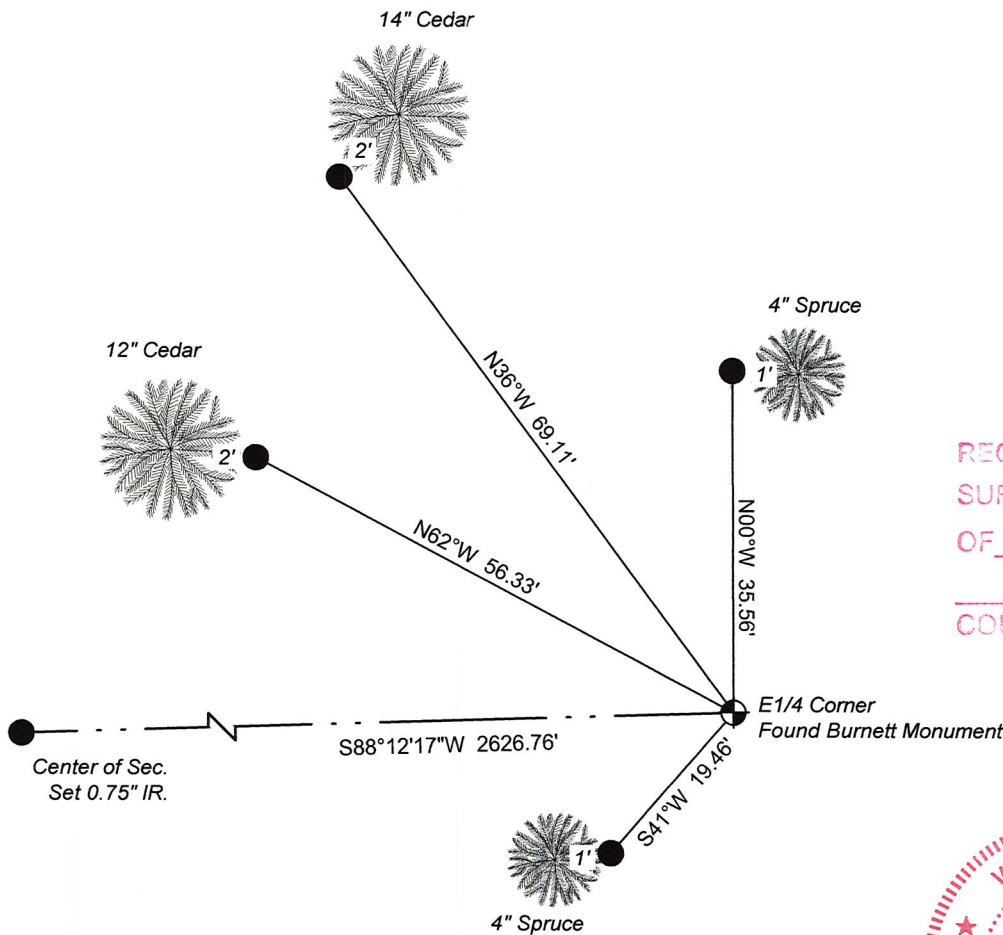
1865 Apr.-May - Edward D. Palmer - Set Quarter Section Post. Cedar 4 N55°W 7 links, Cedar 4 S72°E 9 links.

1924 Dec. - D.S. Burnett - Set monument per original B.T., Cedar 4 N55°W 7 links, and marked B.T.'s: Cedar 6" N82°W 31.5 links, Cedar 5" S50°W 33 links, Cedar 5" S35°E 29 links.

1974 Nov. - Robert H. Winat - Found Burnett's monument tipped and reset plumb with remains of cedar stake.
 Set ties PK/disc in 9" Cedar N62°W 58.30', PK/disc in 9" Cedar N32°W 68.26'.

2022 March - Chad A. Besaw - Found Burnett's monument tipped northerly, and Winat's B.T.'s.
 Reset monument plumb with white vinyl t-post on east side and re-tied as shown below.

(c)(d)(e) Plan view of corner with ties to at least 4 witness monuments. If in disagreement with previously established corner, show the distances between the two corners and also indicate the ties to the disputed corner.



RECEIVED BY LINCOLN COUNTY
 SURVEYOR THIS 22ND DAY
 OF April 20 22
Tom Duh
 COUNTY SURVEYOR

WISCONSIN
 CHAD A. BESAW
 S-3029
 MERRILL
 WI
 LAND SURVEYOR
Chad A. Besaw
 4-22-22

Index No. K-17

(i) I, Chad A. Besaw, Wisconsin Professional Land Surveyor #S3029, hereby certify that the corner location on this record was determined by me or under my direction and control and that this U.S. Public Land Survey Monument Record is correct and complete to the best of my knowledge and belief.

Chad A. Besaw
 Signature

4-22-22
 Date

CERTIFIED LAND CORNER RESTORATION

Index No. K-17

State of Wisconsin }
County of Lincoln } ss.

I Robert H. Winat, do hereby certify that on the 28th day of December, 19 73, I found evidence of the West 1/4 corner of Section 14 Township 35, North, Range 4 East, Fourth, Principal Meridian, as described hereon; and that from this evidence I established a new monument and accessories as described hereon to perpetuate the original location of this corner.

Resident witnesses:

August Schotz

History of original corner establishment:

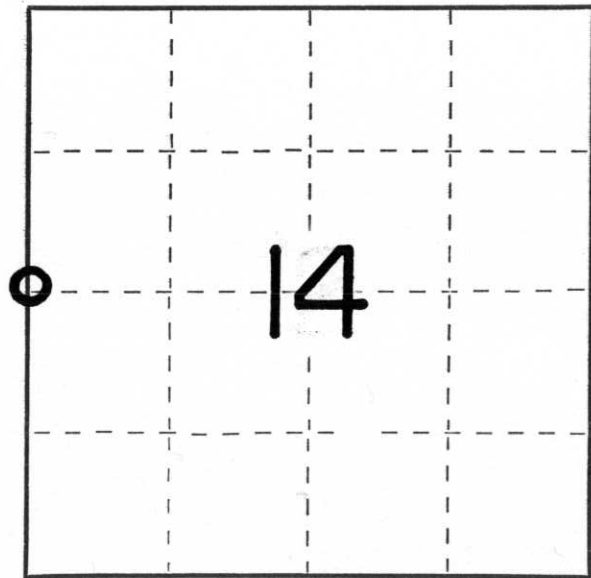
Edward D. Palmer
April 27, 1865
Wood post
4" Cedar N55°W, 7 lks
4" Cedar S72°E, 9 lks

Description of corner evidence found:

2" iron pipe with 5" x 6" plate on top found badly tipped to NE
Old stump hole (original) N55°W, 4.6'
Burnett's BT's badly burned and flat
6" Cedar N82°W, 31½ lks (20.8')
5" Cedar S50°W, 33 lks (21.8')
5" Cedar S35°E, 29 lks (19.1')

Description of monument and accessories I established to perpetuate the original location of this corner.

Reset Burnett's monument vertical in old hole with remains of cedar stake.
PK/disc in 9" Cedar N62°W, 58.30'
PK/disc in 6" Cedar N32°W, 68.26'



○ = Corner monument restored.

Dated at Minocqua, Wis., this 19th day of November, 19 74.

Signature Robert H. Winat Title Land Surveyor Registration No. 3-1040
(County Surveyor, Registered Land Surveyor, or other duly authorized official)

Office of Register of Deeds, County of _____, I hereby certify that the within instrument was filed in this office for record on the _____ day of _____, 19 _____ at _____ o'clock _____ M.

(Register of Deeds)

By _____ Deputy





