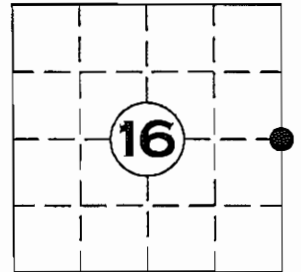


# U.S. PUBLIC LAND SURVEY MONUMENT RECORD

NOTE: THIS FORM IS INTENDED AND DESIGNED TO FULFILL ALL REQUIREMENTS OF WISCONSIN ADMINISTRATIVE CODE CHAPTER A-E 7.08 U.S. PUBLIC LAND SURVEY MONUMENT RECORD (3) (a)(b)(c)(d)(e)(f)(g)(h)(i). AN ADDITIONAL SHEET MAY BE ADDED IF NECESSARY TO CONFIRM WITH SAID REQUIREMENTS.

(a) CORNER LOCATION: E $\frac{1}{4}$  CORNER  
SECTION 16, TOWNSHIP 35 NORTH, RANGE 4 EAST  
TOWN OF SOMO, LINCOLN COUNTY  
LINCOLN COUNTY COORDINATES:  
NORTHING: 245709.222  
EASTING: 317650.333



2in. IRON PIPE W/BRASS CAP  
NORTHING: 245750.311  
EASTING: 317836.324

(b) HISTORY OF ORIGINAL CORNER:  
ORIGINAL SURVEYOR: EDWARD D. PALMER APRIL 1865 – MAY 1865  
SPRUCE 4 S 15° E 131ks  
SPRUCE 5 S 23° W 201ks

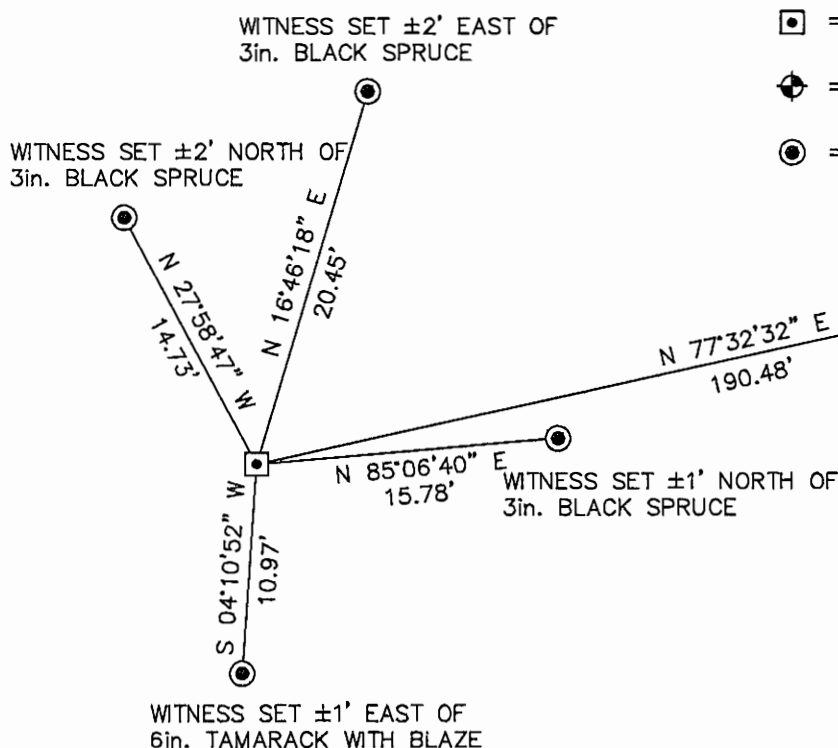
(f)(g)(h) DESCRIPTION OF MONUMENT FOUND AT THIS CORNER AND IF IT WAS ACCEPTED STATE ALL EVIDENCE (MATERIAL, TESTIMONIAL, OCCUPATIONAL, PLATS, RECORDS, OTHER MONUMENTS) USED AS A BASIS FOR ESTABLISHING LOCATION. IF REESTABLISHED THROUGH LOST CORNER PROPORTIONATE METHODS, INDICATE ALL MONUMENTS, DISTANCES, AND DIRECTIONS USED TO ESTABLISH. INDICATE TYPE OF MONUMENT AND SIGN POST FOUND OR SET.

2 DEC. 1924 D.S. BURNETT; FOUND SCRIBED STAKE AND ONE B.T. SET MONUMENT AND WAS NO TREES TO MARK IN CEDAR AND TAM. SWAMP LITTLE DEAD TAM & SPRUCE. TOOK BEARING TO OLD TREE TAM 5" S 38° E 3  $\frac{1}{2}$ lks.

8 FEB 1979 RLS 1383 SURVEY FOR LINCOLN COUNTY FORESTRY DEPARTMENT CALLS FOR 2" CAPPED IP, BT'S SPRUCE 4" S 57° W 18.2', SPRUCE 3" N 4° E 28.75' ( LINES RUN BY WILLIAM WENGLER 17 JAN. 1979

13 APRIL 2012: FOUND D.S. BURNETT'S MONUMENT (TIPPED) AND AN 2in. IRON PIPE WITH BRASS CAP, STAMPED T35N R4E  $\frac{1}{4}$  S16/S15 LINCOLN CO. 1961 CALLED FOR ON 8 FEB 1979 SURVEY FOR LINCOLN COUNTY FORESTRY SURVEY. STRAIGHTEN AND ACCEPTED D.S. BURNETT'S MONUMENT FOR TRUE SECTION CORNER AND SET FOUR NEW WITNESS MONUMENTS.

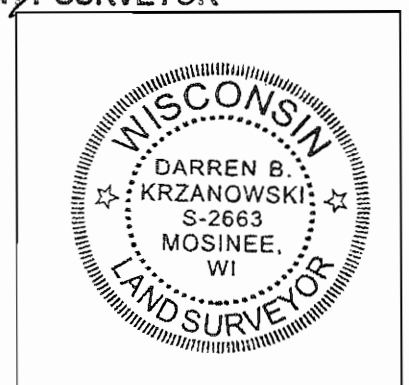
(c)(d)(e) PLAN VIEW OF CORNER WITH TIES TO AT LEAST FOUR WITNESSES. IF IN DISAGREEMENT WITH PREVIOUSLY ESTABLISHED CORNER, SHOW THE DISTANCE BETWEEN THE TWO CORNERS AND ALSO INDICATED THE TIE TO THE DISPUTED CORNER.



- ◻ = 2in. IRON PIPE W/PLATE FOUND (BURNETT MONUMENT)
- ⊕ = 2in. IRON PIPE W/BRASS CAP FOUND
- = 2.7ft. LINCOLN CO. ALUMINUM DRIVE-ABLE MONUMENT SET

NOTE:  
E $\frac{1}{4}$  CORNER PER GENISOT AND ASSOCIATES SURVEY DATED FEB 8 1979 (M182A)

RECEIVED BY LINCOLN COUNTY SURVEYOR THIS 17<sup>TH</sup> DAY OF April 20 12  
*Tom Dahl*  
COUNTY SURVEYOR



I DARREN B. KRZANOWSKI, REGISTERED LAND SURVEYOR NO. 2663, HEREBY CERTIFY THAT THE CORNER LOCATION ON THIS RECORD WAS REFERENCED BY ME OR UNDER MY DIRECTION AND CONTROL AND THAT THIS U.S. PUBLIC LAND SURVEY MONUMENT RECORD IS COMPLETE TO THE BEST OF MY KNOWLEDGE AND BELIEF.

*Darren B. Krzanowski*  
DARREN B. KRZANOWSKI RLS 2663  
DATED THIS 19TH DAY OF APRIL, 2012

INDEX NO. T35N R4E K13





















