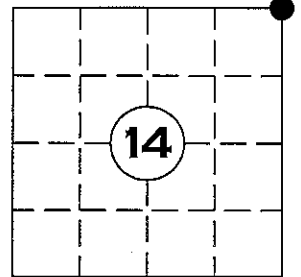


U.S. PUBLIC LAND SURVEY MONUMENT RECORD

NOTE: THIS FORM IS INTENDED AND DESIGNED TO FULFILL ALL REQUIREMENTS OF WISCONSIN ADMINISTRATIVE CODE CHAPTER A-E 7.08 U.S. PUBLIC LAND SURVEY MONUMENT RECORD (3) (a)(b)(c)(d)(e)(f)(g)(h)(i). AN ADDITIONAL SHEET MAY BE ADDED IF NECESSARY TO CONFIRM WITH SAID REQUIREMENTS.

(a) CORNER LOCATION: NE CORNER
SECTION 14, TOWNSHIP 35 NORTH, RANGE 4 EAST
TOWN OF SOMO, LINCOLN COUNTY
LINCOLN COUNTY COORDINATES:
NORTHING: 248677.254
EASTING: 328075.119



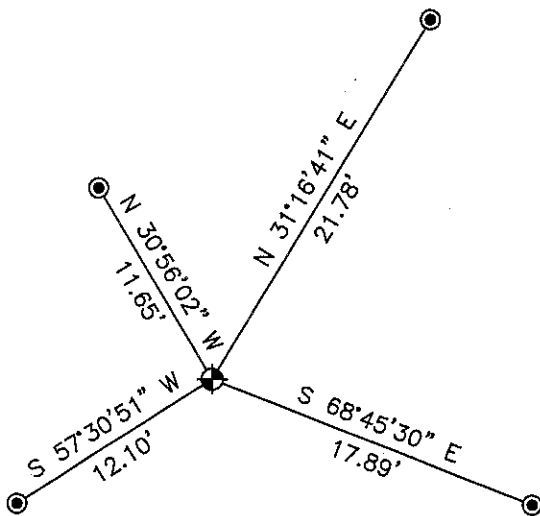
(b) HISTORY OF ORIGINAL CORNER:
ORIGINAL SURVEYOR: EDWARD D. PALMER, APR 1865 – MAY 1865
SPRUCE 4 N 45° W 10 LINKS
TAMARAC 6 S 61° E 31 LINKS
SPRUCE 5 S 72° W 27 LINKS

(f)(g)(h) DESCRIPTION OF MONUMENT FOUND AT THIS CORNER AND IF IT WAS ACCEPTED STATE ALL EVIDENCE (MATERIAL, TESTIMONIAL, OCCUPATIONAL, PLATS, RECORDS, OTHER MONUMENTS) USED AS A BASIS FOR ESTABLISHING LOCATION. IF REESTABLISHED THROUGH LOST CORNER PROPORTIONATE METHODS, INDICATE ALL MONUMENTS, DISTANCES, AND DIRECTIONS USED TO ESTABLISH. INDICATE TYPE OF MONUMENT AND SIGN POST FOUND OR SET.

21 SEPT. 1923 D.S. BURNETT; FOUND ORIGINAL GOV'T B.T. & 4" x 4" CEDAR STAKE. TAM 6" S 61° E 31 LINKS SPRUCE 4" N 45° W 10 LINKS, ALSO A TAM 10" S 30° W 37 LINKS WHICH WAS APPARENTLY MARKED BY GOV'T BUT NO RECORD MADE. SET IRON MONUMENT AND MARKED NEW B.T. SPRUCE 7" S 87° W 32 1/2 LINKS, BIRCH 7" N 45°00' W 28 LINKS, BIRCH 7" N 5°00' E 49 1/4 LINKS

10 APRIL 2012; EXTENSIVE SEARCH OF AREA, FOUND NO EVIDENCE OF THE BURNETT MONUMENT OR CALLED FOR BT'S. SET 5' ALUMINUM LINCOLN COUNTY DRIVE-ABLE MONUMENT BY DOUBLE PROPORTION AND NEW WITNESS MONUMENTS

(c)(d)(e) PLAN VIEW OF CORNER WITH TIES TO AT LEAST FOUR WITNESSES. IF IN DISAGREEMENT WITH PREVIOUSLY ESTABLISHED CORNER, SHOW THE DISTANCE BETWEEN THE TWO CORNERS AND ALSO INDICATED THE TIE TO THE DISPUTED CORNER.



MARSHY AREA WITH SMALL SAPLINGS

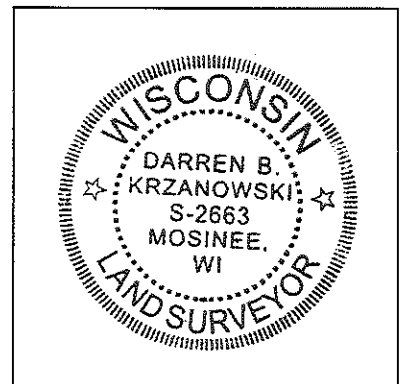
- ◆ = 5' ALUMINUM LINCOLN CO. DRIVE-ABLE MONUMENT SET
- = 27in. ALUMINUM LINCOLN CO. DRIVE-ABLE MONUMENT SET

RECEIVED BY LINCOLN COUNTY SURVEYOR THIS 15TH DAY OF June 20, 12
Tom Dalk
COUNTY SURVEYOR

PAGE 1 OF 2

I DARREN B. KRZANOWSKI, REGISTERED LAND SURVEYOR NO. 2663, HEREBY CERTIFY THAT THE CORNER LOCATION ON THIS RECORD WAS REFERENCED BY ME OR UNDER MY DIRECTION AND CONTROL AND THAT THIS U.S. PUBLIC LAND SURVEY MONUMENT RECORD IS COMPLETE TO THE BEST OF MY KNOWLEDGE AND BELIEF.

Darren B. Krzanowski
DARREN B. KRZANOWSKI RLS 2663
DATED THIS 20TH DAY OF APRIL 2012

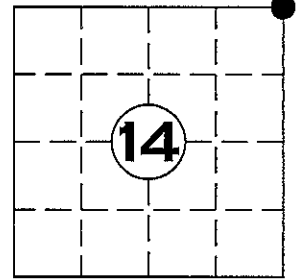


INDEX NO. T35N R4E 121

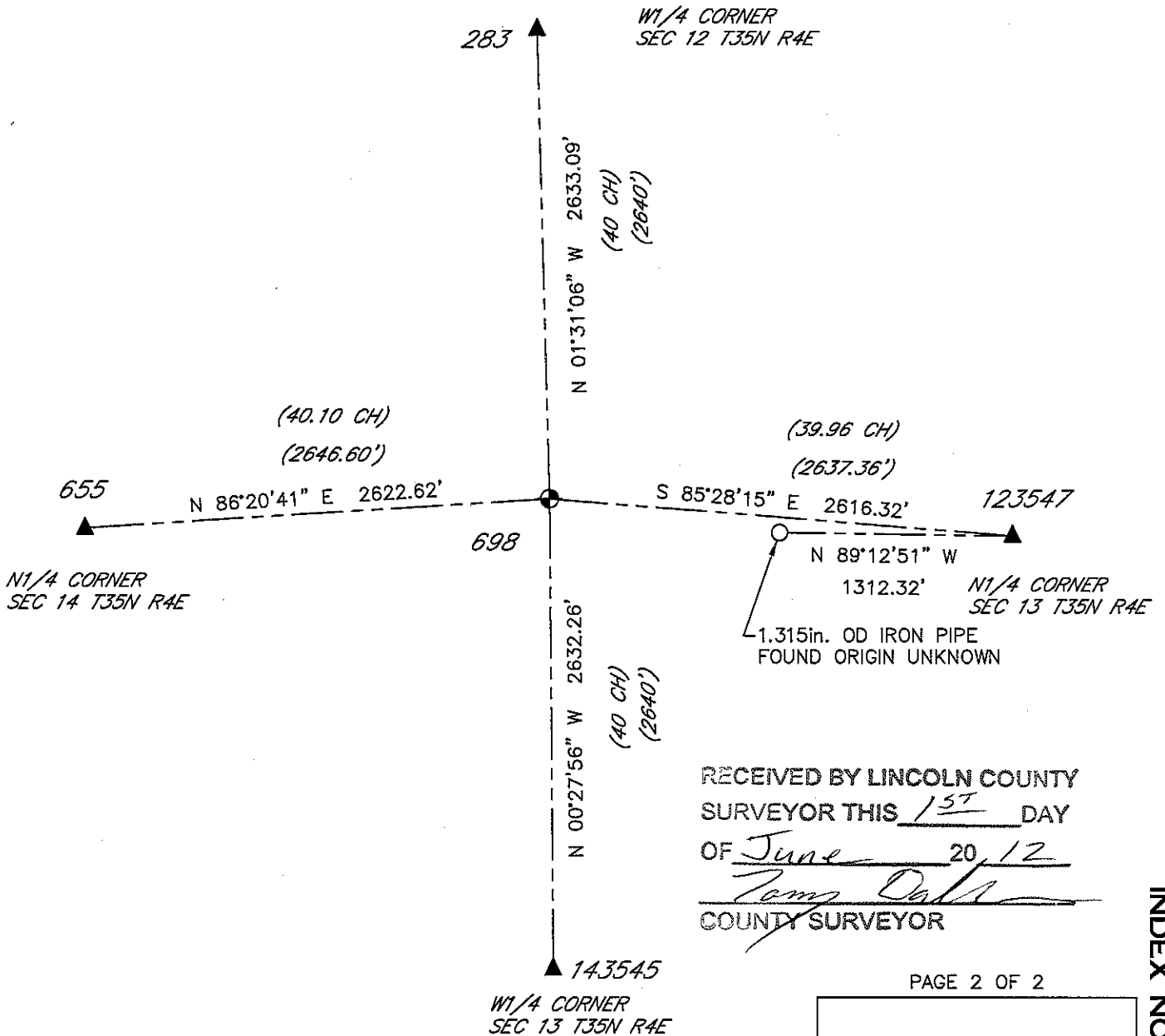
U.S. PUBLIC LAND SURVEY MONUMENT RECORD

NOTE: THIS FORM IS INTENDED AND DESIGNED TO FULFILL ALL REQUIREMENTS OF WISCONSIN ADMINISTRATIVE CODE CHAPTER A-E 7.08 U.S. PUBLIC LAND SURVEY MONUMENT RECORD (3) (a)(b)(c)(d)(e)(f)(g)(h)(i). AN ADDITIONAL SHEET MAY BE ADDED IF NECESSARY TO CONFIRM WITH SAID REQUIREMENTS.

(a) CORNER LOCATION: NE CORNER
SECTION 14 TOWNSHIP 35 NORTH, RANGE 4 EAST
TOWN OF SOMO, LINCOLN COUNTY

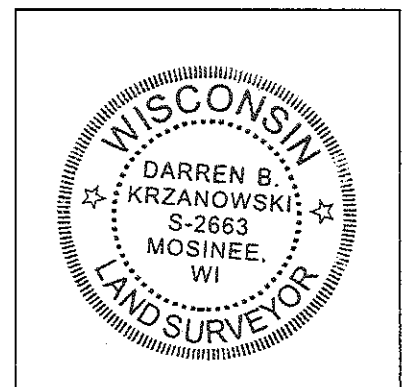


POINT	NORTHING	EASTING
283	251309.424	328005.354
655	248510.058	325457.831
698	248677.254	328075.119
123547	248470.655	330683.266
143545	246045.083	328096.504



RECEIVED BY LINCOLN COUNTY
SURVEYOR THIS 15TH DAY
OF June 20, 12
Tammy Dalk
COUNTY SURVEYOR

PAGE 2 OF 2



INDEX NO. T35N R4E 121

I DARREN B. KRZANOWSKI, REGISTERED LAND SURVEYOR NO. 2663, HEREBY CERTIFY THAT THE CORNER LOCATION ON THIS RECORD WAS REFERENCED BY ME OR UNDER MY DIRECTION AND CONTROL AND THAT THIS U.S. PUBLIC LAND SURVEY MONUMENT RECORD IS COMPLETE TO THE BEST OF MY KNOWLEDGE AND BELIEF.

Darren Krzanowski

DARREN B. KRZANOWSKI RLS 2663
DATED THIS 20TH DAY OF APRIL 2012









DO NOT REMOVE

