

# U.S. PUBLIC LAND SURVEY MONUMENT RECORD

NOTE: This form is intended and designed to fulfill all requirements of Wisconsin Administrative Code, Chapter A-E 7.08 U.S. Public Land Survey Monument Record. An additional sheet may be added if necessary to conform with said requirements.

## CORNER LOCATION

Section Corner common to Sections 10, 11, 14, and 15  
 Township 35 North, Range 5 East of the 4th P.M.  
 Town of Somo, Lincoln County, Wisconsin

6	5	4	3	2	1
7	8	9	10	11	12
18	17	16	15	14	13
19	20	21	22	23	24
30	29	28	27	26	25
31	32	33	34	35	36

**T35N - R4E**

## HISTORY OF ORIGINAL CORNER ESTABLISHMENT

ORIGINAL SURVEYOR: Edward D. Palmer  
 DATE OF SURVEY: Commenced April 1865 Finished May 1865  
 ORIGINAL ACCESSORIES: "Set post for corner to Sections 10, 11, 14 and 15"  
 Birch 8 N56°W 27 links  
 Birch 6 N50°E 17 links  
 Hemlock 8 S32°E 31 links  
 Hemlock 12 S20°W 14 links

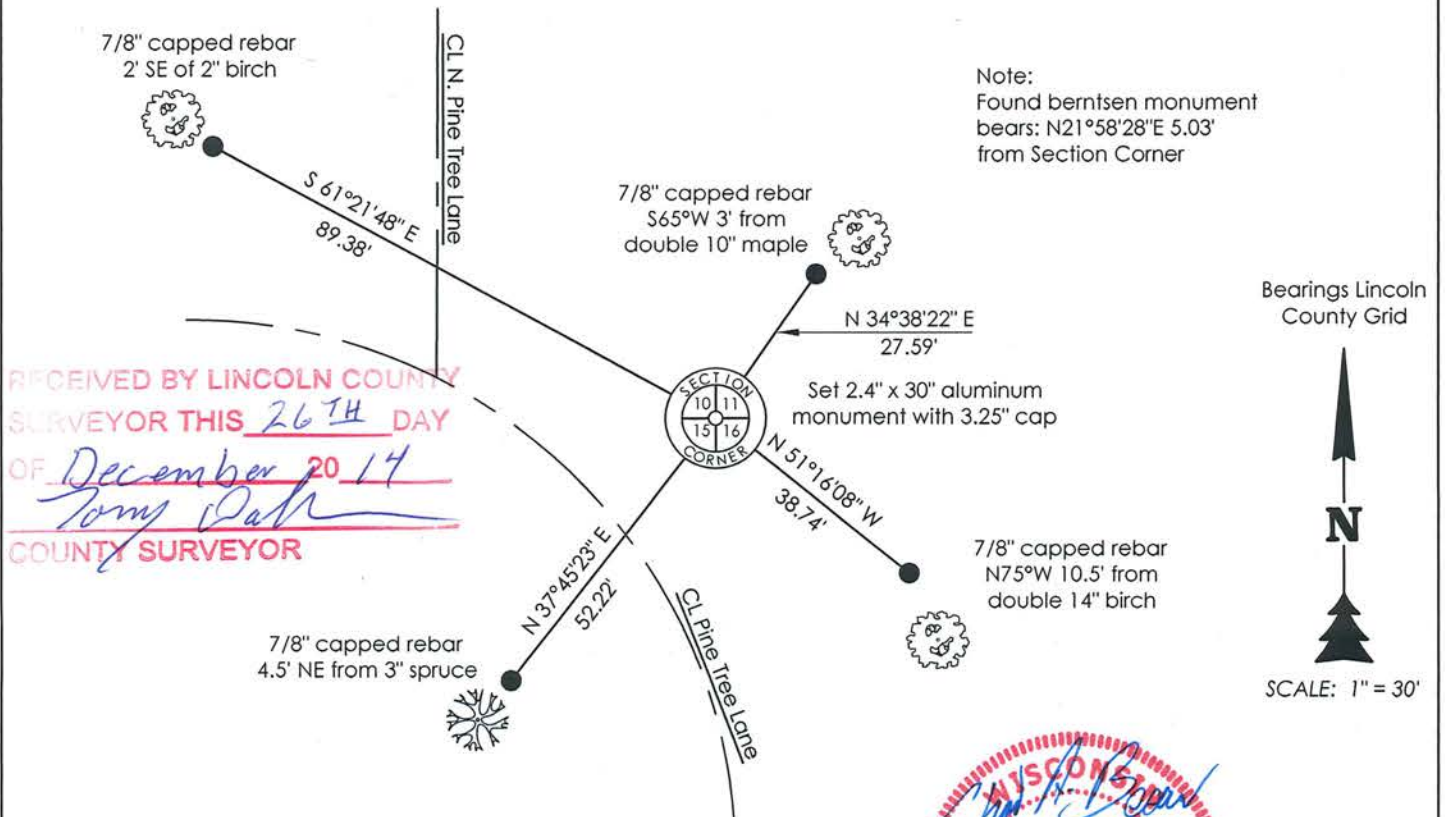
DESCRIPTION OF MONUMENT FOUND AT THIS CORNER AND IF IT WAS ACCEPTED. STATE ALL EVIDENCE (MATERIAL, TESTIMONIAL, OCCUPATIONAL, PLATS, RECORDS, OTHER MONUMENTS) USED AS A BASIS FOR ACCEPTING. IF NOT ACCEPTED OR IF NOTHING WAS FOUND, STATE EVIDENCE USED AS BASIS FOR ESTABLISHING LOCATION. IF RE-ESTABLISHED THROUGH LOST CORNER PROPORTIONATE METHODS, INDICATE ALL MONUMENTS, DISTANCES AND DIRECTIONS USED TO ESTABLISH. INDICATE TYPE OF MONUMENT AND SIGN POST FOUND OR SET.

1923 - D.S. Burnett re-established the Section corner as indicated by the "X" placed on the map of the Town of Somo on page 28 of his field book located in the Lincoln County Surveyor's office. Although it is not stated in the field notes D.S. Burnett had the reputation of setting a 2.5" iron pipe with 5"x5" steel plates on top and bottom and a steel rod through the middle bent over at each end at corner locations (commonly referred to as a Burnett monument).

Sep. 1985 - Lester J. Schmit "Found a 1.25" iron pipe for the corner with the stump of the hemlock (Original Bearing) S32°E to evidence corner location. Corner is at the northerly and easterly extension of the centerline of Pine Tree Lane."

Dec. 2014 - Chad A. Besaw found Schmit's Berntsen monument in good condition. However, I found and held, per Lincoln County Surveyor, a typical Burnett monument (2.5" iron pipe with 5"x5" square plates on top and bottom) at the Southeast corner of Section 10 which bears S16°31'30"W 10.61' from Schmit's Berntsen monument. I was unable to locate the original Bearing Tree stump that Schmit found. The "Burnett monument" was bent at a 90° angle down approximately 10" leaving the remaining section of pipe plumb underground. I set a 2.4" x 30" aluminum monument with a 3.25" cap 4" below grade at the base location of the "Burnett monument", and placed the "Burnett monument" on the ground near Schmit's Berntsen monument. I set a white vinyl T-post 1' NE of corner. See Section Summary filed with this USPLS monument record. Witnessed with as shown below:

PLAN VIEW OF CORNER WITH TIES TO AT LEAST 4 WITNESS MONUMENTS. IF IN DISAGREEMENT WITH PREVIOUSLY ESTABLISHED CORNER, SHOW THE DISTANCES BETWEEN THE TWO CORNERS AND ALSO INDICATE THE TIES TO THE DISPUTED.



RECEIVED BY LINCOLN COUNTY SURVEYOR THIS 26<sup>TH</sup> DAY OF December 20 14  
*Tommy Doherty*  
 COUNTY SURVEYOR



I, Chad A. Besaw, Registered Land Surveyor No. S-3029, hereby certify that the corner location on this record was determined by me or under my direction and control and that this U.S. Public Land Survey Monument Record is correct and complete to the best of my knowledge and belief.

*Chad A. Besaw* 12-26-14  
 Chad A. Besaw, RLS No. S-3029  
 STEIGERWALDT LAND SURVEYING, LLC

I-17

# U.S. PUBLIC LAND SURVEY MONUMENT RECORD

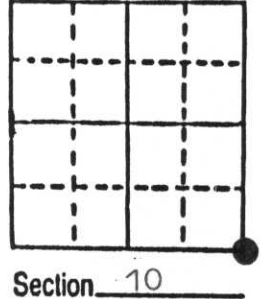
Note: This form is intended and designed to fulfill all requirements of Wisconsin Administrative Code, Chapter A-E 5.02, U.S. Public Land Survey Monument Record (3) (a) (b) (c) (d) (e) (f) (g) (h) (i). An additional sheet may be added if necessary to conform with said requirements.

(a) Corner location: Township 35 North

Range 4 East

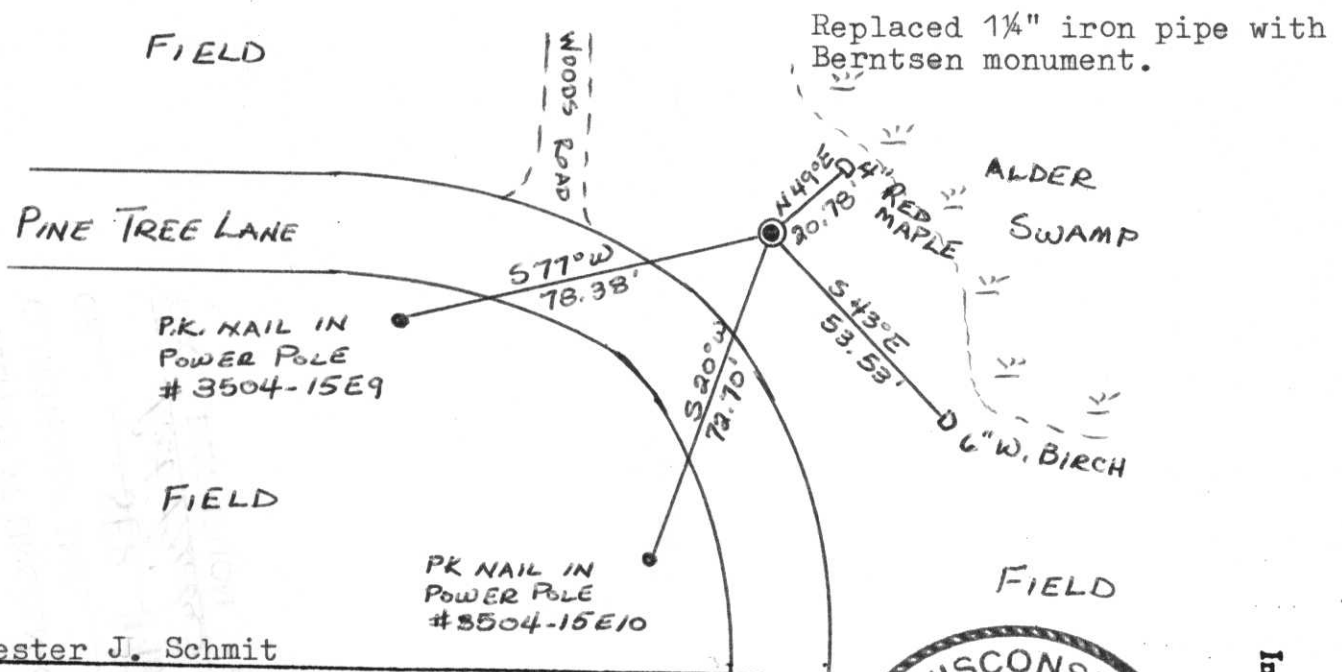
Town Somo

County Lincoln



(b) (f) (g) (h) Description of monument found at this corner and if it was accepted, state all evidence (material, testimonial, occupational, plats, records, other monuments) used as a basis for accepting. If not accepted or if nothing was found, state evidence used as basis for establishing location. If reestablished through lost corner proportionate methods, indicate all monuments, distances and directions used to establish. Original Gov't. Survey: Apr. 1865 by Edward Palmer, set wood post for corner with bearings, birch 8 N 56° W 27 links, birch 6 N 50° E 17 links, hemlock 8 S 32° E 31 links & hemlock 12 S 20° W 14 links. I found a 1 1/4" iron pipe for the corner with the stump of the hemlock (Original Bearing) S 32° E to evidence corner location. Corner is at the northerly & easterly extension of the centre-line of Pine Tree Lane.

(c) (d) (e) Plan view of corner with ties to at least 4 witness monuments. If in disagreement with previously established corner, show the distances between the two corners and also indicate the ties to the disputed corner.



(i) I, Lester J. Schmit  
 (type or print name) certify that the corner location on this record was determined by me or under my direction and control and that this U.S. Public Land Survey Monument Record is correct and complete to the best of my knowledge and belief.

Lester J. Schmit                      9 Sep 85  
 Signature                                      Date



Index No. I-12