

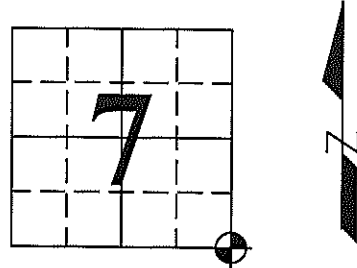
# U.S. PUBLIC LAND SURVEY MONUMENT RECORD

Note: This form is intended and designed to fulfill all requirements of Wisconsin Administrative Code, Chapter A-E 7.08, U.S. Public Land Survey Monument Record (3) (a) (b) (c) (d) (e) (f) (g) (h) (i). An additional sheet may be added if necessary to conform with said requirements.

(a) Corner location: Township 35 North  
Range 4 East

Town/City/Village Somo

County Lincoln



(b) (f) (g) (h) Description of monument found at this corner and if it was accepted, state all evidence (material, testimonial, occupational, plats, records, other monuments) used as a basis for accepting. If not accepted or if nothing was found, state evidence used as basis for establishing location. If reestablished through lost corner proportionate methods, indicate all monuments, distances and directions used to establish.

1865 - Edward D. Palmer set Section corner post.  
Sugar 17 N35°W 39 lks, Hemlock 10 N44°E 46 lks, Sugar 14 S70°E 25 lks, Birch 18 S55°W 47 lks.

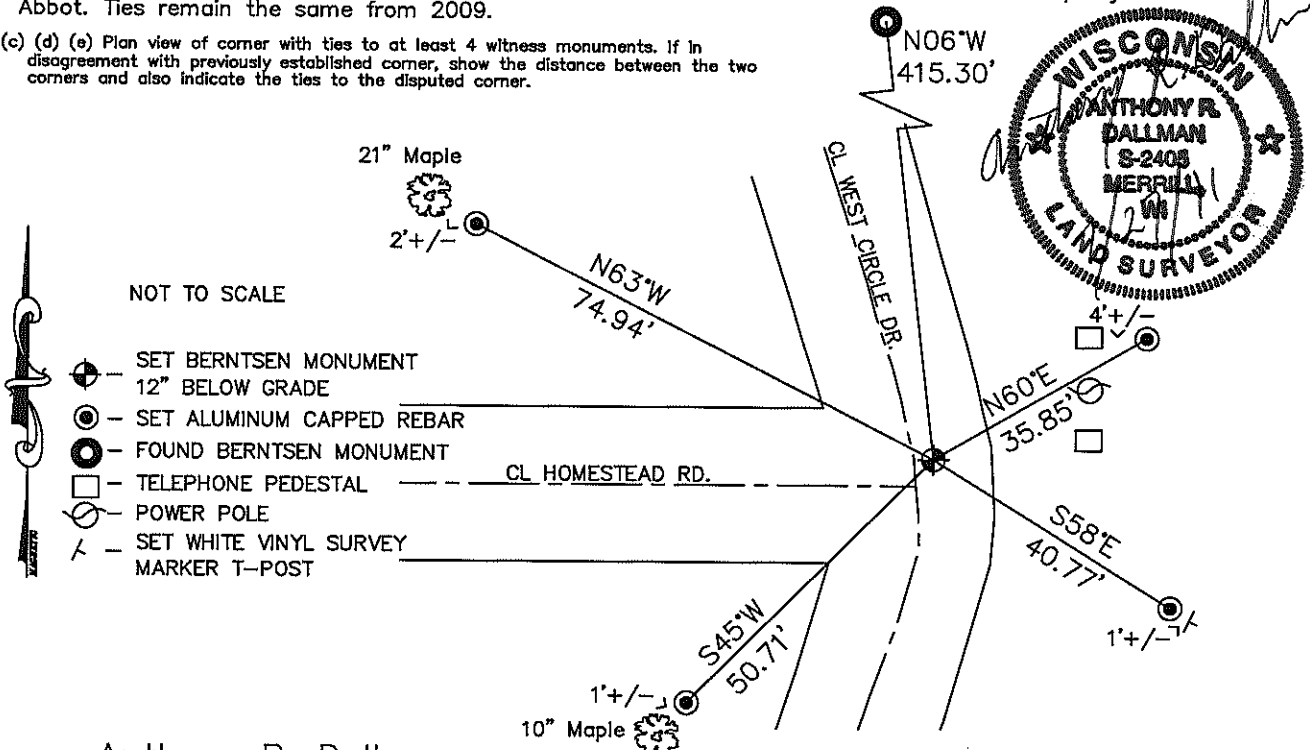
1923 - D.S. Burnett found no evidence of original B.T.'s, but by evidence of J.F. Kavanaugh (Chariman Town of Lynn, Oneida County, T.36,37N. R.4E. 1914-1915) who, "ran lines West from here some years ago", set monument at intersection of roads and marked up bearings. Hard Maple 12" N9°E 79 3/4 lks, Hemlock 12" N86°E 47 lks.

1982 - William G. Imich treated corner as lost, found no evidence of original. Reset corner by double proportionate measure from N 1/4 Section 18, NE Corner Section 17 for East-West and W 1/4 Section 8, SW Corner Section 17 for North-South. Reset corner 420' North of roadway intersection. (See Lincoln County Tie Sheet for ties).

2009 - Anthony R. Dallman found Burnett's monument 17' +/- North of CL Homestead Rd. and on East edge of West Circle Dr. down approx. 3" from ground in ditch. Local testimony from Affidavit dated January 2, 1985, states metal section corner marker in the CL intersection of Homestead Rd. and West Circle Dr. was destroyed by grader. Dave Lemke RLS found spike in said int. also found a P.K. Nail in power pole East of said int. Set R.R. Spike to Burnett's distance from South and split CL's of West Circle Dr. for East-West approx. 3.5' North of said spike, 5.5' +/- East of CL West Circle Dr., and 6' +/- North of CL Homestead Rd. Tied as shown below.

2011 - Anthony R. Dallman set Berntsen Monument at location described above per court ruling Case No. 2009-CV-55, Palmquist's "The Farm", LTD., vs. Brad Millard and Sarah Millard, and third party Rohn Abbot. Ties remain the same from 2009.

(c) (d) (e) Plan view of corner with ties to at least 4 witness monuments. If in disagreement with previously established corner, show the distance between the two corners and also indicate the ties to the disputed corner.



(i) I, Anthony R. Dallman

(type or print name) certify that the corner location on this record was determined by me under my direction and control and that this U.S. Public Land Survey Monument Record is correct and complete to the best of my knowledge and belief.

Anthony R. Dallman  
Signature

7/27/11  
Date

Index No. 1-5

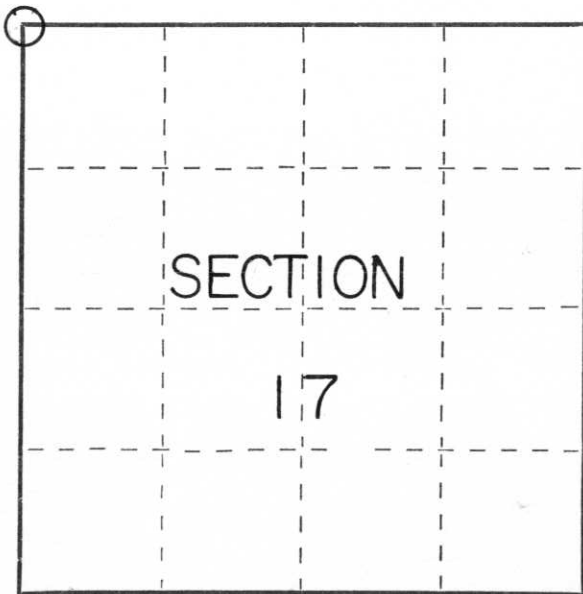
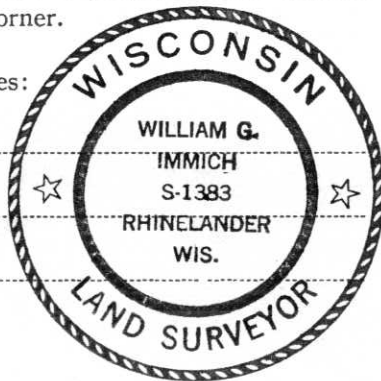
CERTIFIED LAND CORNER RESTORATION

Index No. I-5

State of Wisconsin }  
County of LINCOLN } ss.

I, WILLIAM IMMICH, do hereby certify that on the 29<sup>th</sup> day of SEPTEMBER, 1982, I found evidence of the NORTHWEST corner of SECTION 17 Township 35, North, Range 4 EAST, Fourth, Principal Meridian, as described hereon; and that from this evidence I established a new monument and accessories as described hereon to perpetuate the original location of this corner.

Resident witnesses:



○ = Corner monument restored.

History of original corner establishment:

ORIGINAL GOVERNMENT SURVEY 1865 A. ANDERSON SURVEYOR  
1923 BURNETT LOOKED FOR CORNER, FOUND NO ORIGINAL EVIDENCE, USED ROAD INTERSECTION FROM WHICH J.F. KAVANAUGH RAN A LINE WEST, ALL EVIDENCE FROM TREE LINES, FIELD LINES, AND PREVIOUS WORK IN THIS AREA RESULT IN THE PLACEMENT OF THE CORNER 420' NORTH OF ROAD WAY INTERSECTION, I TREATED THIS CORNER AS LOST, NO EVIDENCE LEADING TO ORIGINAL CORNER AVAILABLE.

Description of corner evidence found:

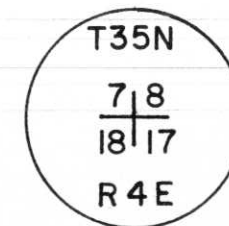
CORNER LOST RESET BY DOUBLE PROPORTIONATE MEASURE FROM N 1/4 SEC 18 -> NE COR. SEC 17 & W 1/4 SEC 8 -> SW COR SEC 17

Description of monument and accessories I established to perpetuate the original location of this corner.

SET LINCOLN COUNTY MONUMENT STAMPED AS SHOWN

BEARING TREES :

8" MAPLE N 10° E 74.75' PK IN BLAZE  
6" MAPLE N 78° E 27.51' PK IN BLAZE  
6" MAPLE S 58° W 80.55' PK IN BLAZE  
POWER POLE S 16° E 55.02' SPIKE IN SIDE



Dated at RHINELANDER, Wis., this 29<sup>th</sup> day of SEPTEMBER, 1982.

Signature William Immich Title REGISTERED LAND SURVEYOR Registration No. 1383  
(County Surveyor, Registered Land Surveyor, or other duly authorized official)

Office of Register of Deeds, County of \_\_\_\_\_, I hereby certify that the within instrument was filed in this office for record on the \_\_\_\_\_ day of \_\_\_\_\_, 19\_\_\_\_ at \_\_\_\_\_ o'clock \_\_\_\_\_ M.

(Register of Deeds)

By \_\_\_\_\_ Deputy





8T FUSE-

**WARNING**



High Voltage  
Above.  
**KEEP OFF**  
Can shock, burn,  
or cause death.



































