

U.S. PUBLIC LAND SURVEY MONUMENT RECORD

NOTE: This form is intended and designed to fulfill all requirements of Wisconsin Administrative Code, Chapter A-E 7.08 U.S. Public Land Survey Monument Record. An additional sheet may be added if necessary to conform with said requirements.

CORNER LOCATION

Quarter Section Corner common to Sections 9 and 10
Township 35 North, Range 5 East of the 4th P.M.
Town of Somo, Lincoln County, Wisconsin

6	5	4	3	2	1
7	8	9	10	11	12
18	17	16	15	14	13
19	20	21	22	23	24
30	29	28	27	26	25
31	32	33	34	35	36

T35N - R4E

HISTORY OF ORIGINAL CORNER ESTABLISHMENT

ORIGINAL SURVEYOR: Edward D. Palmer
DATE OF SURVEY: Commenced April 1865 Finished May 1865
ORIGINAL ACCESSORIES: "Set post for one-quarter Section Corner"
Fir 6 N32°W 24 links
Cedar 7 S25°E 12 links

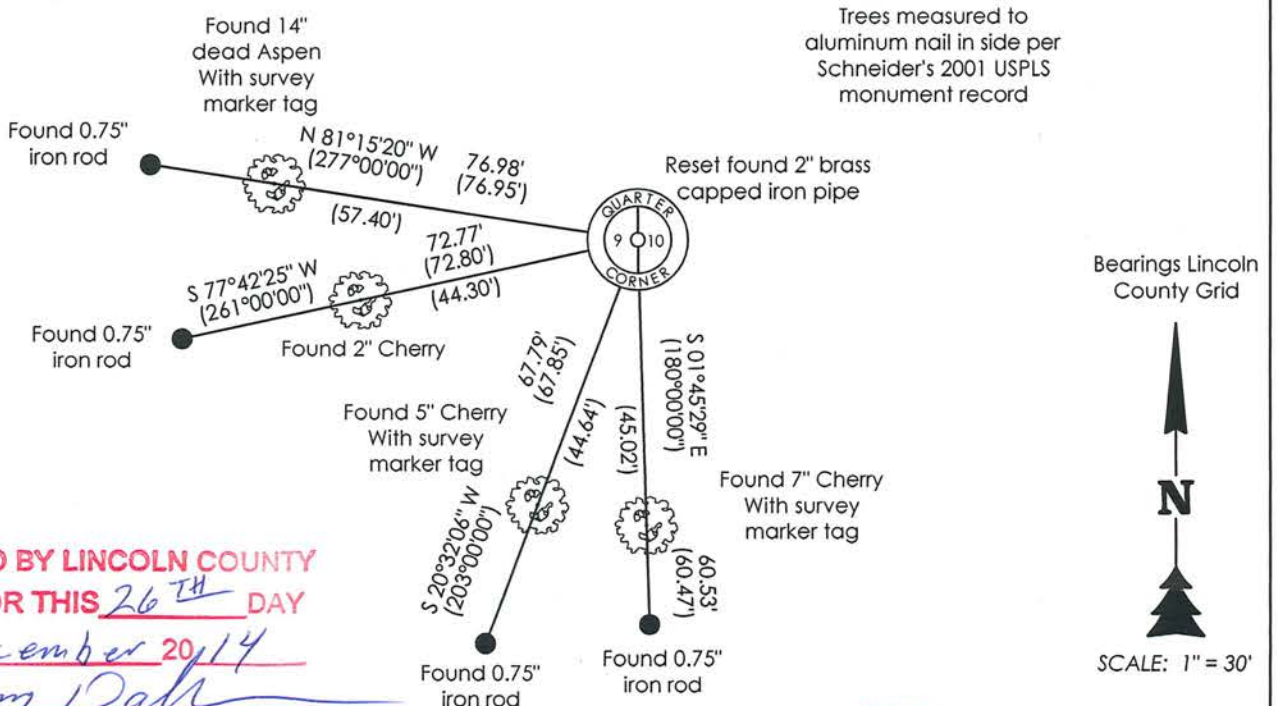
DESCRIPTION OF MONUMENT FOUND AT THIS CORNER AND IF IT WAS ACCEPTED, STATE ALL EVIDENCE (MATERIAL, TESTIMONIAL, OCCUPATIONAL, PLATS, RECORDS, OTHER MONUMENTS) USED AS A BASIS FOR ACCEPTING. IF NOT ACCEPTED OR IF NOTHING WAS FOUND, STATE EVIDENCE USED AS BASIS FOR ESTABLISHING LOCATION. IF RE-ESTABLISHED THROUGH LOST CORNER PROPORTIONATE METHODS, INDICATE ALL MONUMENTS, DISTANCES AND DIRECTIONS USED TO ESTABLISH. INDICATE TYPE OF MONUMENT AND SIGN POST FOUND OR SET.

1923 - D.S. Burnett found a "stake" and original cedar bearing tree down (7" S25°E 12 lks). Marked new bearing trees: Birch 12" N87°E 33 1/4 lks, Birch 10" N86°W 26 1/2 lks, Hemlock 8" S48°E 24 lks. Although it is not stated in the field notes D.S. Burnett had the reputation of setting a 2.5" iron pipe with 5"x5" steel plates on top and bottom and a steel rod through the middle bent over at each end at corner locations (commonly referred to as a Burnett monument).

May 2001 - Al Schneider found a 2" brass capped iron pipe, which he confirmed to be set by Lincoln County Forestry and mapped by Genisot Eng in 1961 for a survey of Section 9. He set new ties and a white fiberglass T-post 4" east of corner. He also found an obliterated Burnett monument rusted in two (2.5" IP with 5"x5" square plate on each end).

Dec. 2014 - Chad A. Besaw found a 2" x 48" brass capped iron pipe with a 12" piece of angle iron welded to the bottom lying flat. Lying next to said pipe was a white fiberglass T-post and a typical Burnett monument rusted in two as Schneider mentioned in his 2001 monument record. I reset the 2" pipe per Schneider's ties all of which were in good condition. While digging the hole for the monument I found a 12" section of wood post 4" in diameter that was rotted off at one end and wedged at the other. This corner is located in the SW corner of an open marsh previously flooded. I was unable to locate the 1961 Genisot map in the Lincoln County Land Information records. See Section Summary filed with this USPLS monument record. Witnessed as shown below:

PLAN VIEW OF CORNER WITH TIES TO AT LEAST 4 WITNESS MONUMENTS. IF IN DISAGREEMENT WITH PREVIOUSLY ESTABLISHED CORNER, SHOW THE DISTANCES BETWEEN THE TWO CORNERS AND ALSO INDICATE THE TIES TO THE DISPUTED.



RECEIVED BY LINCOLN COUNTY
SURVEYOR THIS 26TH DAY
OF December 20, 14
Chad Besaw
COUNTY SURVEYOR

I, Chad A. Besaw, Registered Land Surveyor No. S-3029, hereby certify that the corner location on this record was determined by me or under my direction and control and that this U.S. Public Land Survey Monument Record is correct and complete to the best of my knowledge and belief.

Chad A. Besaw 12-26-14
Chad A. Besaw, RLS No. S-3029
STEIGERWALDT LAND SURVEYING, LLC



6-13

RECORD CODES:
 FB-FIELD BOOK
 L -LARGE MAP
 S -SMALL MAP
 V -VERTICAL FILE
 SD-SECTION DRAWING
 CS-CERTIFIED SURVEY
 P -RECORDED PLAT

6	5	4	3	2	1
7	8	9	10	11	12
18	17	16	15	14	13
19	20	21	22	23	24
30	29	28	27	26	25
31	32	33	34	35	36

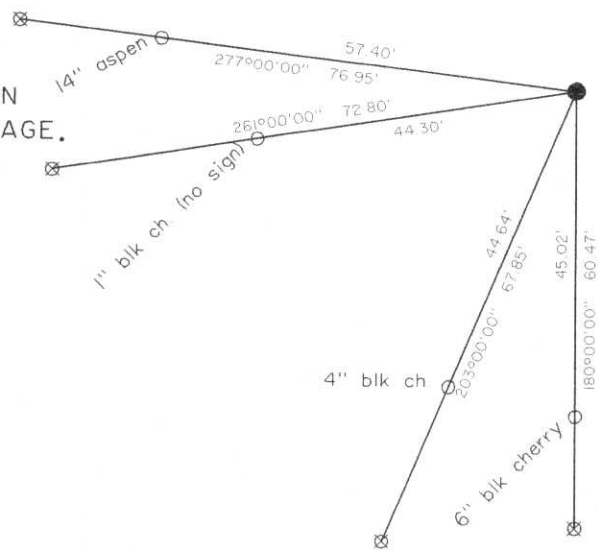
T 35 N, R 4 E

NO. _____

U. S. PUBLIC LAND SURVEY MONUMENT RECORD

CHECK IF INFO ON BACK X

1. THE QUARTER CORNER OF SECTIONS 9 AND 10, T 35 N, R 4 E.
2. ORIGINAL GOVERNMENT SURVEYOR- EDWARD PALMER, DATE- APRIL 1865
3. ORIGINAL BEARING TREES - FEET - SUBSEQUENT RECOVERY RECORD
4. FIR 6 N32W 24 LKS - 15.8 -D.S. BURNETT IN 1923 FOUND A
5. CEDAR 7 S25E 12 LKS - 7.9 -STAKE AND ORIG CEDAR DOWN, PER
6. LKS - -PAGE 6 OF HIS FB, DATED SEPT 14,
7. LKS - -1923.
8. ORIGINAL TOPOGRAPHY CALLS - FEET - PRESENT TOPOGRAPHY
9. 6LK CREEK NORTH 17.33 CHS - 1144 - NOT CHECKED - BEAVER FLOWAGE
10. CHS - -
11. SUBSEQUENT RECORDS IN COUNTY SURVEYOR OFFICE WHICH REFER TO THIS CORNER
12. D.S.BURNETT FIELDBOOK, PAGE 6. GENISOT & ASSOC MAP OF SECTION 9.
- 13.
14. SUBSEQUENT MONUMENTS OF RECORD -SURVEYOR- DATE- RECORD NO.
15. FOUND IRON PIPE - GENISOT- ? - MAP OF SEC 9
- 16.
17. SUBSEQUENT BT'S OR WM'S - FEET -SURVEYOR- DATE- RECORD NO.
18. BIRCH 12 N87E 33-1/4 LKS - 21.9 -BURNETT - 1923- PAGE 6
19. BIRCH 10 N86W 26-1/2 LKS - 17.5 -BURNETT - 1923- PAGE 6
20. HEMLOCK 8" S48E 24 LKS - 15.8 -BURNETT - 1923- PAGE 6
21. ADJOINING CORNER - MY DISTANCE -RECORD FT -SURVEYOR- DATE- RECORD NO.
22. SEC COR SOUTH - 2580.87 - 2583.47 - BURNETT- 1923- PAGE 6
23. SEC COR SOUTH - 2580.87 - 2582.58 - GENISOT- ? - MAP OF SEC 9
24. OTHER INFO IN RECORDS- PER HIS FB, BURNETT WAS SETTING IRON MONUMENTS AT
25. OTHER CORNERS IN THIS AREA, BUT HE FAILED TO MENTION SETTING AN IRON
26. MONUMENT HERE.
27. EVIDENCE FOUND AT CORNER- 2" BRASS CAPPED IRON PIPE, STAMPED "LINCOLN
28. CO. SURVEY MONUMENT 1/4 COR S9/S10 1961." SEE BACK FOR MORE.
29. PERSONS WHO SAW EVIDENCE- AL AND JEFF SCHNEIDER
30. OTHER CONSIDERATIONS- PER MY JAN, 2001, CALL TO GENISOT ENGN., THE FIELD
31. WORK FOR THE MAP OF SEC 9, BEARING THEIR COMPANY NAME BUT NO SURVEYOR
32. NAME, WAS PROBABLY PERFORMED BY THE LINCOLN COUNTY FORESTER, WITH DRAFTING
33. ASSISTANCE FROM SOMEONE AT GENISOT. THIS ACCOUNTS FOR THE PRESENCE OF THE
34. HERETOFORE UNDOCUMENTED LINCOLN CO. SURVEY MONUMENT. ACCORDING TO GENISOT
35. PRIVATE NOTES, A 1-1/2" CAPPED PIPE WAS FOUND.
36. PRESENT COR. MON. - PIPE, LINE 27. SET WHITE FIBERGLASS FENCEPOST 4" EAST.
37. PRESENT WITNESS MONUMENTS-
38. 3/4" X 30" SOLID ROUND IRON BARS,
39. DRIVEN FLUSH.
40. GENERAL AREA DESCRIPTION- BT'S ARE ON
41. SW EDGE OF OPEN MARSH BY BEAVER FLOWAGE.
42. LINCOLN CO. COORDS. 97 HARN
43. N 250959.57
44. E 317652.41
45. MAG N = 0 DEGREES AZ



- = THIS CORNER
- ⊗ = IRON WITNESS MONUMENT
- = OTHER REFERENCE - TREES MEASURED TO ALUMINUM NAIL IN SIDE TO COINCIDE WITH CENTER AT ROOT CROWN, AND WITH YELLOW PLASTIC SIGNS FACING CORNER.



I CERTIFY THAT ON THE 17TH DAY OF APRIL, 2001, I PERPETUATED THIS CORNER AS SHOWN. DATED THIS 9 DAY OF MAY 2001.
Al Schneider LAND SURVEYOR

SEQUENCE NO. : N3442-E0330

6-13

RECORD CODES:
 FB-FIELD BOOK
 L -LARGE MAP
 S -SMALL MAP
 V -VERTICAL FILE
 SD-SECTION DRAWING
 CS-CERTIFIED SURVEY
 P -RECORDED PLAT

6	5	4	3	2	1
7	8	9	10	11	12
18	17	16	15	14	13
19	20	21	22	23	24
30	29	28	27	26	25
31	32	33	34	35	36

T 35 N, R 4 E

NO. _____

U. S. PUBLIC LAND SURVEY MONUMENT RECORD

N3442-E0330

PAGE 2 OF 2

CONTINUED FROM LINE 28:

THE 1961 MONUMENT APPEARS TO BE A 2" STANDARD WEIGHT GALVANIZED IRON PIPE WITH A THREADED BRONZE PLUMBING CAP. IT WAS PROJECTING 24" ABOVE 8" OF WATER.

I ALSO FOUND, BY ACCIDENTALLY STEPPING ON IT, A TYPICAL BURNETT MONUMENT, BEING A 2" X 40" IRON PIPE WITH A 5" X 5" X 1/4" IRON PLATE AS A CAP. THE CAP HAD BEEN FASTENED WITH A 5/8" X 44" IRON ROD PASSED THROUGH A HOLE IN THE CENTER OF THE PLATE AND THROUGH THE PIPE. AT EACH END, 2" OF THE ROD HAD BEEN BENT 90 DEGREES. I FOUND IT UNDER 8" OF GRASS AND WATER, IMMEDIATELY NEXT TO THE 1961 MONUMENT. THE PIPE WAS COMPLETELY RUSTED IN TWO, ABOUT 12" FROM THE TOP, WHICH NO DOUBT WAS THE PART ORIGINALLY AT THE GROUND SURFACE. THIS IS VERY LIKELY THE SAME MONUMENT REFERRED TO IN GENISOT NOTES AS A FOUND 1-1/2" CAPPED PIPE.

THIS CORNER IS IN A LARGE OLD BEAVER FLOWAGE, WHICH STILL RETAINS SOME WATER, DEPENDING ON THE FLOW. THE BEAVERS HAVE ABANDONED THE DAM AND ARE CURRENTLY MAINTAINING A DAM A LITTLE FURTHER UPSTREAM.

THERE ARE NO READILY DISCERNIBLE TRACES OF BURNETT'S 1923 BEARING TREES. ALL OF THEM WERE FLOODED BY THE OLD BEAVER FLOWAGE, WHICH NO DOUBT CONTRIBUTED TO THEIR DISAPPEARANCE.

RECEIVED AT LINCOLN COUNTY
 COURTHOUSE THIS 14TH DAY
 OF May 20 01
Tom Dutton
 LAND INFORMATION OFFICE