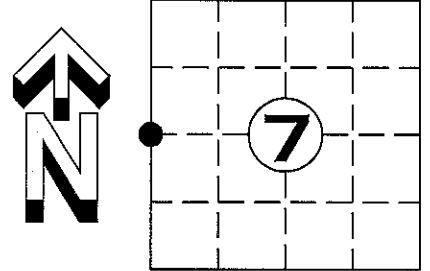


U.S. PUBLIC LAND SURVEY MONUMENT RECORD

NOTE: THIS FORM IS INTENDED AND DESIGNED TO FULFILL ALL REQUIREMENTS OF WISCONSIN ADMINISTRATIVE CODE CHAPTER A-E 7.08 U.S. PUBLIC LAND SURVEY MONUMENT RECORD (3) (a)(b)(c)(d)(e)(f)(g)(h)(i). AN ADDITIONAL SHEET MAY BE ADDED IF NECESSARY TO CONFIRM WITH SAID REQUIREMENTS.

(a) CORNER LOCATION: $\frac{1}{4}$ CORNER
 SECTION 7 TOWNSHIP 35 NORTH, RANGE 4 EAST
 TOWN OF SOMO, LINCOLN COUNTY
 LINCOLN COUNTY COORDINATES:
 NORTHING: 251089.272
 EASTING: 301517.435



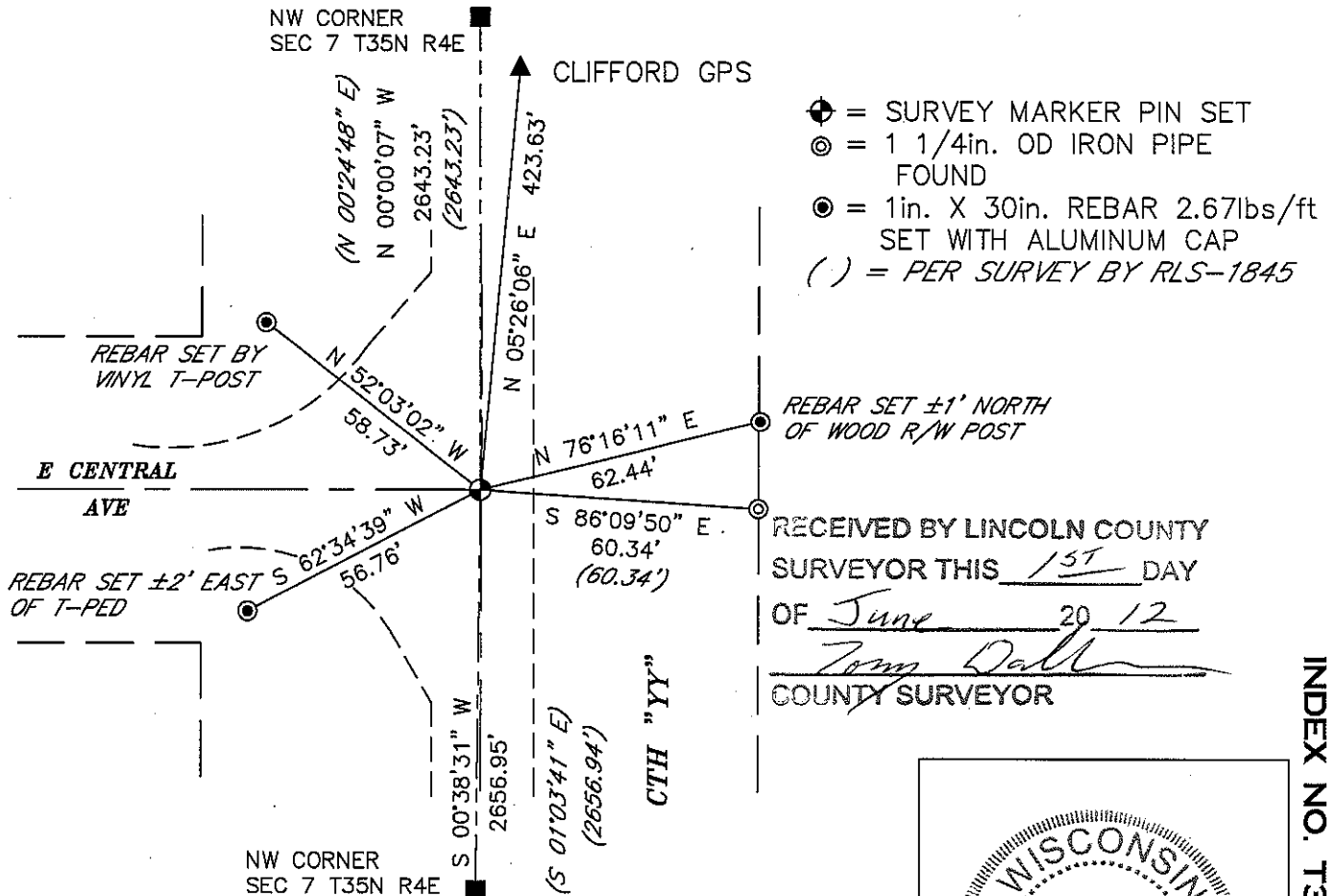
(b) HISTORY OF ORIGINAL CORNER:
 ORIGINAL SURVEYOR: ALEX ANDERSON JULY 1864
 BIRCH 12 S 22° E 17 LINKS
 BIRCH 12 S 11° W 12 LINKS

(f)(g)(h) DESCRIPTION OF MONUMENT FOUND AT THIS CORNER AND IF IT WAS ACCEPTED STATE ALL EVIDENCE (MATERIAL, TESTIMONIAL, OCCUPATIONAL, PLATS, RECORDS, OTHER MONUMENTS) USED AS A BASIS FOR ESTABLISHING LOCATION. IF REESTABLISHED THROUGH LOST CORNER PROPORTIONATE METHODS, INDICATE ALL MONUMENTS, DISTANCES, AND DIRECTIONS USED TO ESTABLISH. INDICATE TYPE OF MONUMENT AND SIGN POST FOUND OR SET.

3 OCT 1923 D.S. BURNETT; AT $\frac{1}{4}$ COR. BET. 7 & 12 WAS SHOWN WHERE THE ORIG. TREES HAD STTOD AND WHERE A STAKE HAD STOOD FOR MANY YEARS UNTIL LATE THIS SUMMER AND UPON THE EVIDENCE OF FRANK PAJUNEN A FREEHOLDER IN SECTION 1-35N. R3E, I SET THE MONUMENT ON THE EAST SIDE OF THE ROAD BED. MARKED NEW BEARINGS HEM 8° S 34° E 76 LINKS, H. MAPLE 7° N 72° E 56 LINKS.

11 MAY 2012; SEARCH OF AREA REVEALED NO EVIDENCE OF CORNER, SET A SURVEY MARKER PIN AT CORNER LOCATION BY RETRACING A SURVEY BY RLS-1845 DATED 8 DEC 1997, IN SURVEY RECORDS (M385B)

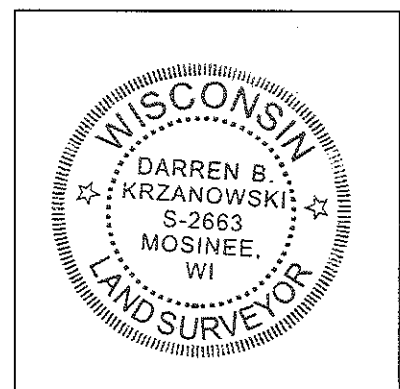
(c)(d)(e) PLAN VIEW OF CORNER WITH TIES TO AT LEAST FOUR WITNESSES. IF IN DISAGREEMENT WITH PREVIOUSLY ESTABLISHED CORNER, SHOW THE DISTANCE BETWEEN THE TWO CORNERS AND ALSO INDICATED THE TIE TO THE DISPUTED CORNER.



RECEIVED BY LINCOLN COUNTY SURVEYOR THIS 15TH DAY OF June 20 12
Tom Dalk
 COUNTY SURVEYOR

I DARREN B. KRZANOWSKI, REGISTERED LAND SURVEYOR NO. 2663, HEREBY CERTIFY THAT THE CORNER LOCATION ON THIS RECORD WAS REFERENCED BY ME OR UNDER MY DIRECTION AND CONTROL AND THAT THIS U.S. PUBLIC LAND SURVEY MONUMENT RECORD IS COMPLETE TO THE BEST OF MY KNOWLEDGE AND BELIEF.

Darren Krzanowski
 DARREN B. KRZANOWSKI RLS 2663
 DATED THIS 16TH DAY OF MAY 2012



INDEX NO. T35N R4E G1









