

U.S. PUBLIC LAND SURVEY MONUMENT RECORD

NOTE: This form is intended and designed to fulfill all requirements of Wisconsin Administrative Code, Chapter A-E 7.08 U.S. Public Land Survey Monument Record. An additional sheet may be added if necessary to conform with said requirements.

CORNER LOCATION

Quarter Section Corner common to Sections 3 and 10
 Township 35 North, Range 5 East of the 4th P.M.
 Town of Somo, Lincoln County, Wisconsin

6	5	4	3	2	1
7	8	9	●	11	12
18	17	16	15	14	13
19	20	21	22	23	24
30	29	28	27	26	25
31	32	33	34	35	36

T35N - R4E

HISTORY OF ORIGINAL CORNER ESTABLISHMENT

ORIGINAL SURVEYOR: Edward D. Palmer
 DATE OF SURVEY: Commenced April 1865 Finished May 1865
 ORIGINAL ACCESSORIES: "Set post for 1/4 Section Corner"
 Birch 10 S80°W 6 links
 Hemlock 8 N70°W 15 links

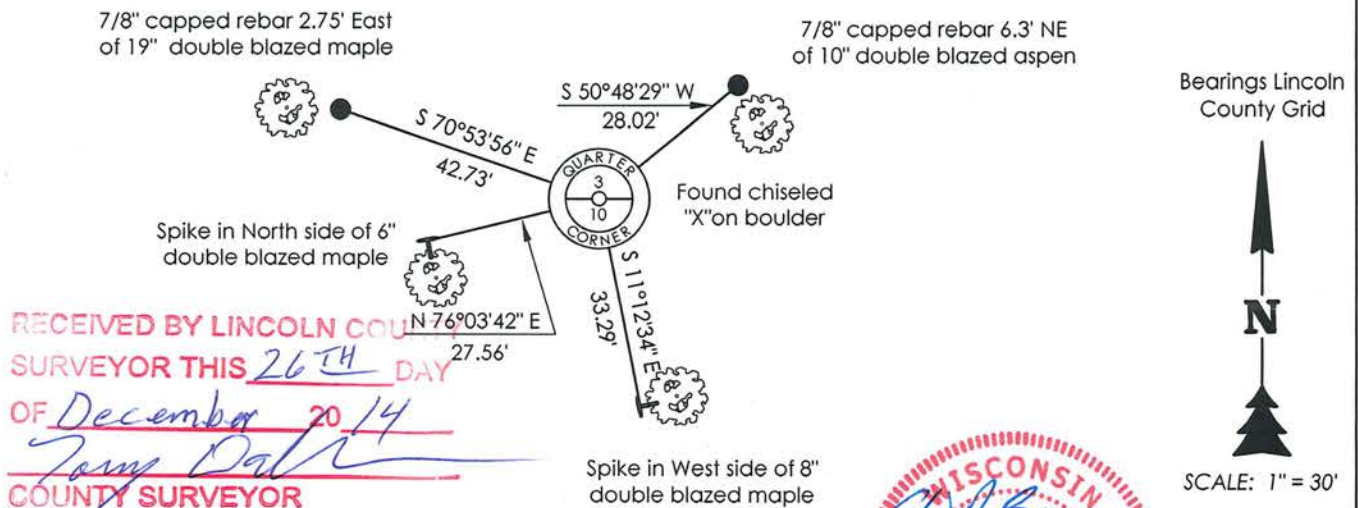
DESCRIPTION OF MONUMENT FOUND AT THIS CORNER AND IF IT WAS ACCEPTED, STATE ALL EVIDENCE (MATERIAL, TESTIMONIAL, OCCUPATIONAL, PLATS, RECORDS, OTHER MONUMENTS) USED AS A BASIS FOR ACCEPTING. IF NOT ACCEPTED OR IF NOTHING WAS FOUND, STATE EVIDENCE USED AS BASIS FOR ESTABLISHING LOCATION. IF RE-ESTABLISHED THROUGH LOST CORNER PROPORTIONATE METHODS, INDICATE ALL MONUMENTS, DISTANCES AND DIRECTIONS USED TO ESTABLISH. INDICATE TYPE OF MONUMENT AND SIGN POST FOUND OR SET.

Sep. 1923 - D.S. Burnett ran the north line of Section 10.
 "From Section corner common to Sections 3, 4, 9 and 10
 36.43 chains W. edge Somo River, 37.38 chains E. edge Somo River, 38.46 chains had Var. S of Smith's 1/4 corner 79 lks, 38.70 chains had Var. S of Thomas' 1/4 corner 80 lks, 41.21 chains CL traveled track of highway, 77.29 chains Var S. 1.55 chains identified cor of 2-3-10-11 by a 2"x2" steel bar and B.T. S.M. 16" N59°W 46 1/2 links. Set monument no other trees to mark." It is unclear if Burnett actually set a monument at the North 1/4 corner of Section 10.

Nov. 1974 - Robert Winot reports: "The one-quarter corner common to Sections 3 and 10 was established in accordance with the Wisconsin Supreme Court decision of Ferhman vs. Bissell Lumber Company in 1925, even though no corner evidence was found on the ground to substantiate the surveys of George Smith in 1916 and Herman Thomas in 1920. The re-survey of D.S. Burnett in 1923 noted the location of 2 posts and identified them as Smith's and Thomas'. Our proportioned location fits Burnett's measurements as to the location of the Big Somo River but a long and careful search found no evidence of these posts. No evidence could be found except the fence and old centerline of the existing Carpenter Rd. matches the section line at County Trunk Highway "T". This corner is located 1/2 of the distance between the section corners and on the straight line between same in accordance with the Supreme Court decision." Witnessed by: Lincoln County berntsen monument as a witness corner N02°10'W 1.00' from (drill hole on rock), 9" elm N62°W 44.33', 5" balsam N43°E 21.83', iron pipe S86° 24'W 68.5'.

Dec. 2014 - Chad A. Besaw found a chiseled "x" (no drill hole could be found) on a boulder S10°13'E 1.00' from Winot's witness berntsen monument. Also witnessing the corner N56°W 2' is a 3"x3" squared wood post scribed "1/4" with a 1.25" iron pipe wired to it. I failed to locate Winot's iron pipe tie (S86° 24'W 68.5'), possibly due to the numerous magnetic rocks in the area. I set a white vinyl T-post 0.5' NW of the found "X". This corner is located approximately 108 feet East of the Somo River and 167 feet West of CTH "T". See Section Summary filed with this USPLS monument record. Witnessed as shown below:

PLAN VIEW OF CORNER WITH TIES TO AT LEAST 4 WITNESS MONUMENTS. IF IN DISAGREEMENT WITH PREVIOUSLY ESTABLISHED CORNER, SHOW THE DISTANCES BETWEEN THE TWO CORNERS AND ALSO INDICATE THE TIES TO THE DISPUTED.



RECEIVED BY LINCOLN COUNTY SURVEYOR THIS 26TH DAY OF December 20, 14
Jerry Dalk
 COUNTY SURVEYOR



I, Chad A. Besaw, Registered Land Surveyor No. S-3029, hereby certify that the corner location on this record was determined by me or under my direction and control and that this U.S. Public Land Survey Monument Record is correct and complete to the best of my knowledge and belief.

Chad A. Besaw 12-26-14
 Chad A. Besaw, RLS No. S-3029
 STEIGERWALDT LAND SURVEYING, LLC

E-15

CERTIFIED LAND CORNER RESTORATION

Index No. E-15

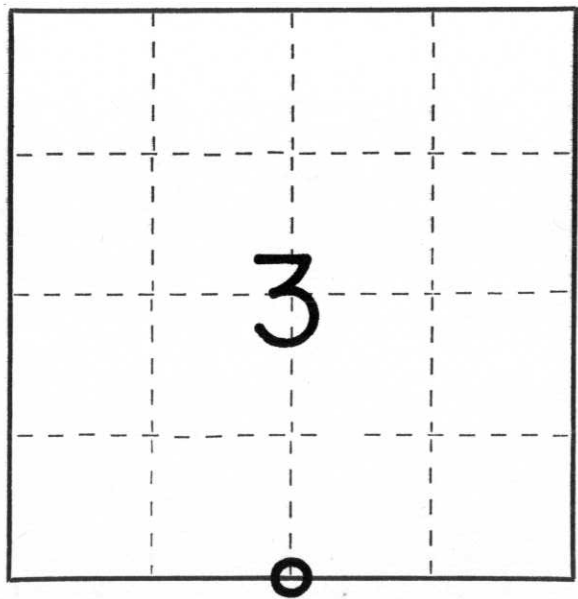
State of Wisconsin }
County of Lincoln } ss.

I, Robert H. Winat, do hereby certify that on the 20th day of November, 1973, I found evidence of the South one-quarter corner of Section 3 Township 35, North, Range 4 East, Fourth, Principal Meridian, as described hereon; and that from this evidence I established a new monument and accessories as described hereon to perpetuate the original location of this corner.

Resident witnesses:

John Ordway

Floyd Blackwood



○ = Corner monument restored.

History of original corner establishment:

Surveyor: Edw. Palmer
Date: April & May, 1865
Monumentation: Wood post
Witnesses: 10" Birch S48°W, 6 lk.
8" Hemlock N70°W, 15 lk.

Description of corner evidence found:

The one-quarter corner common to Sections 3 and 10 was established in accordance with the Wisconsin Supreme Court decision of Fehrman vs. Bissell Lumber Company in 1925, even though no corner evidence was found on the ground to substantiate the surveys of George Smith in 1916 and Herman Thomas in 1920. The re-survey of D.S. Burnett in 1923 noted the location of 2 posts and identified them as Smith's and Thomas'. Our proportioned location fits Burnett's measurements as to the location of the Big Somo River but a long and careful search found no evidence of these posts. No evidence could be found except the fence and old centerline of the existing Carpenter Road matches the section line at County Trunk Highway "T". This corner is located 1/2 of the distance between the section corners and on the straight line between same in accordance with the Supreme Court decision.

Description of monument and accessories I established to perpetuate the original location of this corner.

Lincoln Co. Berntsen monument 36" as a
Witness corner N2°-10'W, 1.00' from 1/4 corner (drill hole on rock)
9" Elm N62°W 44.33'
5" Balsam N43°E, 21.83'
Iron pipe S86°-24'W, 68.5'

Dated at Minneapolis, Wis., this 19th day of November, 1974.

Signature Robert H. Winat Title Land Surveyor Registration No. S-1010
(County Surveyor, Registered Land Surveyor, or other duly authorized official)

Office of Register of Deeds, County of _____, I hereby certify that the within instrument was filed in this office for record on the _____ day of _____, 19____ at _____ o'clock _____ M.

(Register of Deeds)

By _____ Deputy