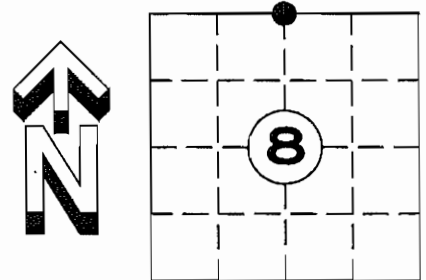


U.S. PUBLIC LAND SURVEY MONUMENT RECORD

NOTE: THIS FORM IS INTENDED AND DESIGNED TO FULFILL ALL REQUIREMENTS OF WISCONSIN ADMINISTRATIVE CODE CHAPTER A-E 7.08 U.S. PUBLIC LAND SURVEY MONUMENT RECORD (3) (a)(b)(c)(d)(e)(f)(g)(h)(i). AN ADDITIONAL SHEET MAY BE ADDED IF NECESSARY TO CONFIRM WITH SAID REQUIREMENTS.

(a) CORNER LOCATION: $\text{NW}\frac{1}{4}$ CORNER
SECTION 8; TOWNSHIP 35 NORTH, RANGE 4 EAST
TOWN OF SOMO, LINCOLN COUNTY
LINCOLN COUNTY COORDINATES:
NORTHING: 253168.193
EASTING: 309323.006



(b) HISTORY OF ORIGINAL CORNER:
ORIGINAL SURVEYOR:
EDWARD D. PALMER APRIL 1865 - MAY 1865
CEDAR 6 N 15° W 24 LINKS
BIRCH 12 S 60° E 35 LINKS

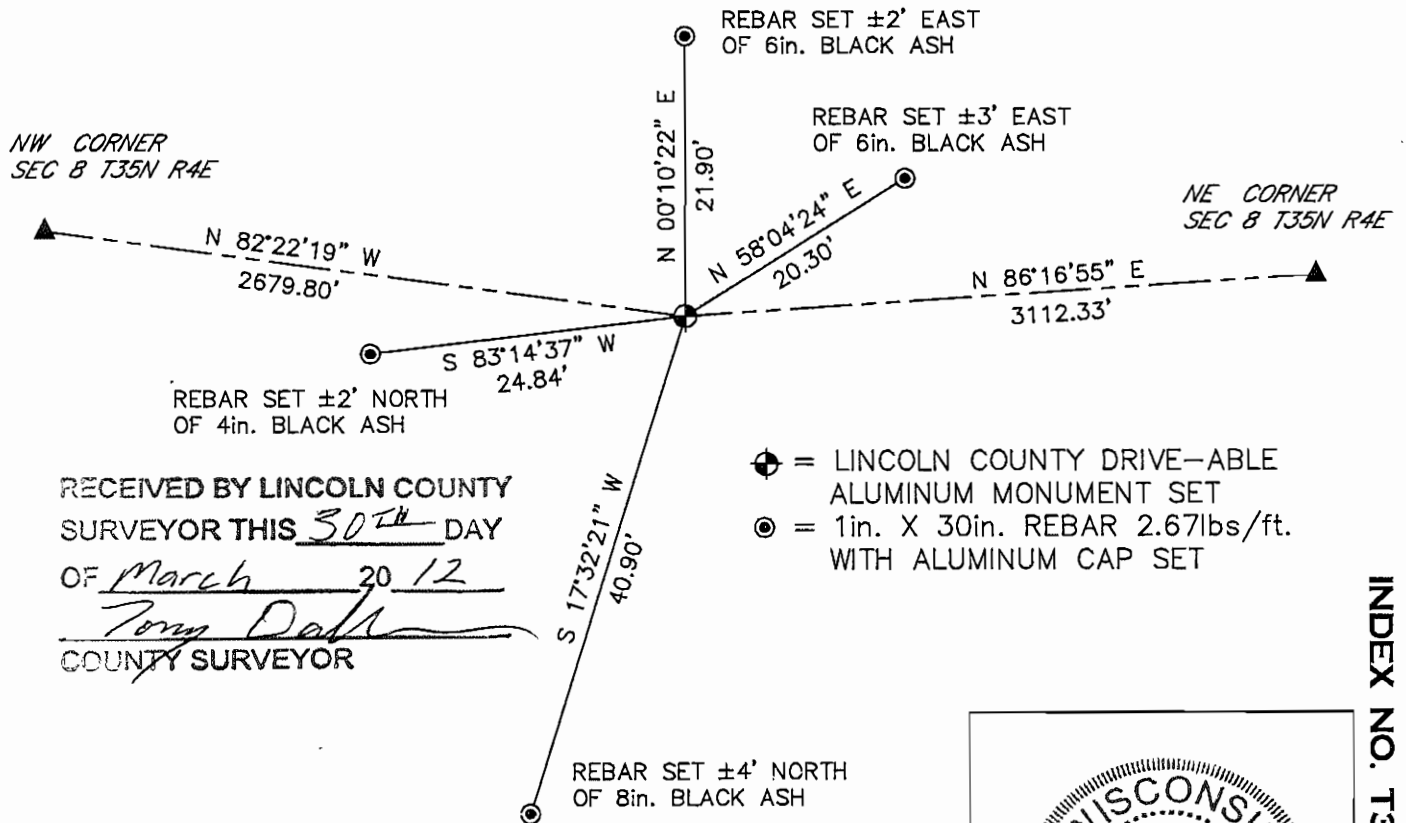
(f)(g)(h) DESCRIPTION OF MONUMENT FOUND AT THIS CORNER AND IF IT WAS ACCEPTED STATE ALL EVIDENCE (MATERIAL, TESTIMONIAL, OCCUPATIONAL, PLATS, RECORDS, OTHER MONUMENTS) USED AS A BASIS FOR ESTABLISHING LOCATION. IF REESTABLISHED THROUGH LOST CORNER PROPORTIONATE METHODS, INDICATE ALL MONUMENTS, DISTANCES, AND DIRECTIONS USED TO ESTABLISH. INDICATE TYPE OF MONUMENT AND SIGN POST FOUND OR SET.

3 OCT. 1923 D.S. BURNETT FOUND ORIGINAL B.T.S AND STAKE, CEDAR 6in. N 15° W 24 LINKS (DOWN), BIRCH 12in. S 60° E 35 LINKS (ROTTEN STUMP). SET MONUMENT AND MARKS NEW B.T.S BIRCH 7in. N 80° W 54 LINKS, BIRCH 10in. S 84° E 56 LINKS, BALSAM 7in. S 18° W 37 ½ LINKS.

24 FEBRUARY 2012; FOUND CALLED FOR BEARING TREE (14in. CEDAR) AT THE NORTHWEST CORNER OF THE $\text{NE}\frac{1}{4}$ $\text{NW}\frac{1}{4}$ FROM SURVEY DATED 1963 BY W.H. STUTH FOR OWENS-ILLINOIS FOREST PRODUCTS. DOUBLED DISTANCE OVER FROM THE NORTHWEST SECTION CORNER FOR SEARCH AREA. FOUND A 2in. IRON PIPE WITH PLATES ON EACH END CONSISTENT WITH THOSE SET BY D.S. BURNETT LYING DOWN ±4in. BELOW GROUND. LOCATION FIT WELL WITH THE EXTENTION OF AN OLD DOWN FENCE FROM THE NORTH.

SET LINCOLN COUNTY DRIVE-ABLE MONUMENT AT THE BASE OF 2in. IRON PIPE AND SET FOUR NEW WITNESS MONUMENTS.

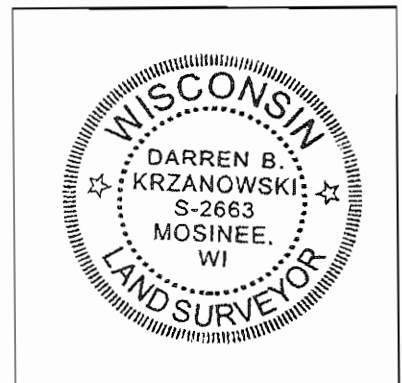
(c)(d)(e) PLAN VIEW OF CORNER WITH TIES TO AT LEAST FOUR WITNESSES. IF IN DISAGREEMENT WITH PREVIOUSLY ESTABLISHED CORNER, SHOW THE DISTANCE BETWEEN THE TWO CORNERS AND ALSO INDICATED THE TIE TO THE DISPUTED CORNER.



RECEIVED BY LINCOLN COUNTY
SURVEYOR THIS 30TH DAY
OF March 20 12
Darren B. Krzanowski
COUNTY SURVEYOR

I DARREN B. KRZANOWSKI, REGISTERED LAND SURVEYOR NO. 2663, HEREBY CERTIFY THAT THE CORNER LOCATION ON THIS RECORD WAS REFERENCED BY ME OR UNDER MY DIRECTION AND CONTROL AND THAT THIS U.S. PUBLIC LAND SURVEY MONUMENT RECORD IS COMPLETE TO THE BEST OF MY KNOWLEDGE AND BELIEF.

Darren B. Krzanowski
DARREN B. KRZANOWSKI RLS 2663
DATED THIS 27TH DAY OF FEBRUARY, 2012



INDEX NO. T35N R4E E7











PLEASE
DO NOT



