

U.S. PUBLIC LAND SURVEY MONUMENT RECORD

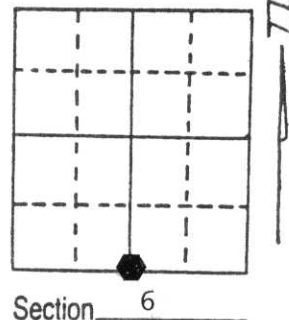
Note: This form is intended and designed to fulfill all requirements of Wisconsin Administrative Code, Chapter A-E 5.02, U.S. Public Land Survey Monument Record (3) (a) (b) (c) (d) (e) (f) (g) (h) (i). An additional sheet may be added if necessary to conform with said requirements.

(a) Corner location: Township 35 North

Range 4 East

Town/City/Village Somo

County Lincoln



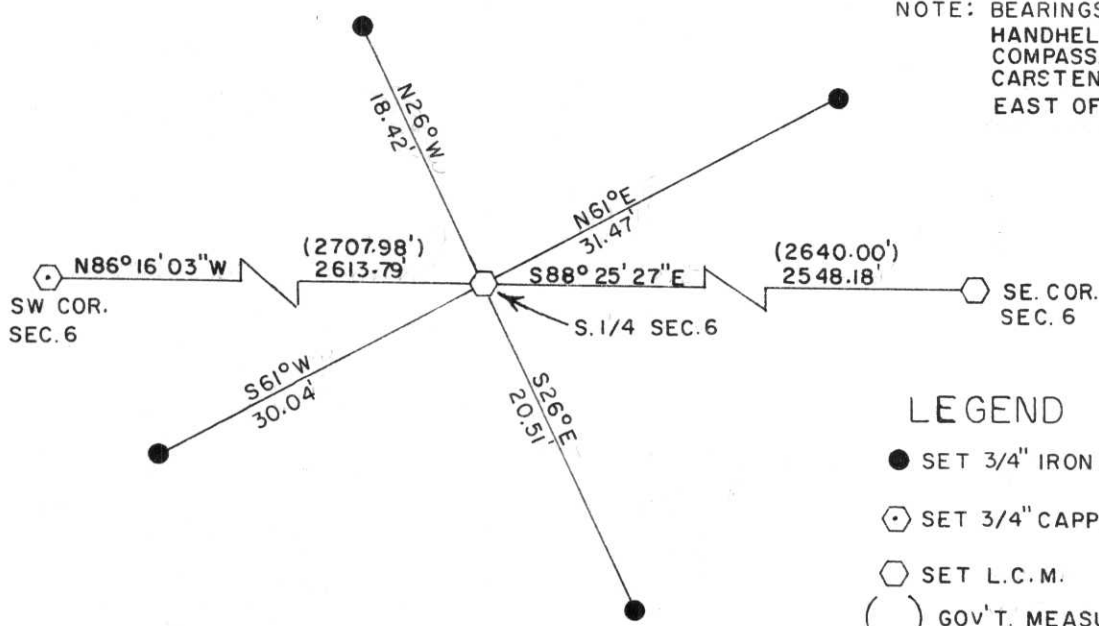
(b) (f) (g) (h) Description of monument found at this corner and if it was accepted, state all evidence (material, testimonial, occupational, plats, records, other monuments) used as a basis for accepting. If not accepted or if nothing was found, state evidence used as basis for establishing location. If reestablished through lost corner proportionate methods, indicate all monuments, distances and directions used to establish.

1864 - GOV'T SET SEC. 1/4 POST AND MADE THE FOLLOWING B.T.'s:
BIRCH 11" N35°E 10 LINKS; HEMLOCK 13" S20°W 12 LINKS

1996 - WILLIAM E. BANDOW SET L.C.M. AND WITNESSED AS SHOWN BELOW

**RECEIVED AT LINCOLN COUNTY
COURTHOUSE THIS 10th DAY
OF Sept 19 96
Pat Prober
TAX DESCRIPTION OFFICE**

(c) (d) (e) Plan view of corner with ties to at least 4 witness monuments. If in disagreement with previously established corner, show the distances between the two corners and also indicate the ties to the disputed corner.



NOTE: BEARINGS TAKEN WITH A HANDHELD MAGNETIC COMPASS. NO SCALE. SET, CARSTENITE POST 1.00' EAST OF CORNER.

LEGEND

- SET 3/4" IRON ROD
- ◻ SET 3/4" CAPPED IRON ROD
- ◻ SET L.C.M.
- () GOV'T. MEASUREMENTS

(i) I, William E. Bandow
(type or print name) certify that the corner location on this record was determined by me or under my direction and control and that this U.S. Public Land Survey Monument Record is correct and complete to the best of my knowledge and belief.

William E. Bandow 9-6-96
Signature Date



Index No. E-3