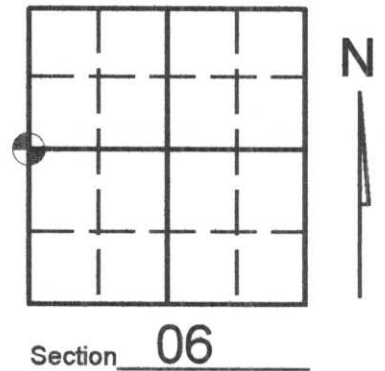


U.S. PUBLIC LAND SURVEY MONUMENT RECORD

Note: This form is intended and designed to fulfill all requirements of Wisconsin Administrative Code, Chapter A-E 7.08 U.S. Public Land Survey Monument Record (3)(a)(b)(c)(d)(e)(f)(g)(h)(i). An additional sheet may be added if necessary to conform with said requirements.

(a) Corner location: Township 35 North
 Range 05 (East)/West

Town/City/Village WILSON
 County LINCOLN



(b) (f) (g) (h) Description of monument found at this corner and if it was accepted, state all evidence (material, testimonial, occupational, plats, records, other monuments) used as a basis for accepting. If not accepted or if nothing was found, state evidence used as basis for establishing location. If reestablished through lost corner proportionate methods, indicate all monuments, distances and directions used to establish. Indicate type of monument found or set and sign post.

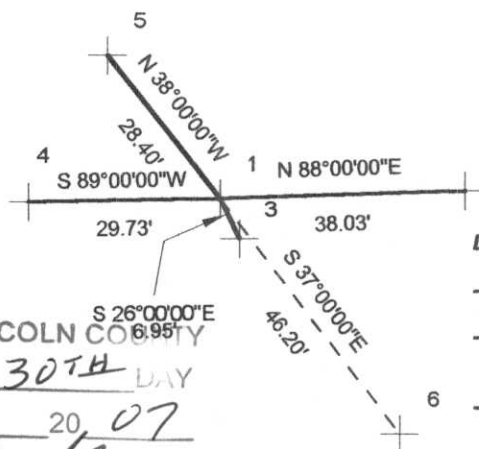
August 1860 - Sept. 1860: Alfred Millard set quarter section post and made the following B.T.'S:
 12" Hemlock S10°E, 30 Links
 18" Y. Birch N38°E, 32 Links

September 1923: Burnett set 1/4 between 1 & 6 and made the following B.T.'S
 W. Pine 7", S37°E, 70 Links
 Poplar 6", N48°E, 20 Links

May 2007: Kevin Bixby found 2" square capped iron pipe and witnessed as shown below.

(c) (d) (e) Plan view of corner with ties to at least 4 witness monuments. If in disagreement with previously established corner, show the distances between the two corners and also indicate the ties to the disputed corner.

SCALE: 1"=30'



NOTE:
 WHITE PLASTIC SIGN POST IS +/-1.00'
 NORTH OF CORNER.

LEGEND

- 1- = EXISTING 2" SQUARE CAPPED I.P.
- 2,-3,-4,-5- = SET 3/4" CAPPED LINCOLN COUNTY WITNESS MONUMENT
- 6- = EXISTING STUMP (POSSIBLE BURNETT B.T.)

RECEIVED BY LINCOLN COUNTY
 SURVEYOR THIS 30TH DAY
 OF May 20 07
Kevin P. Bixby
 COUNTY SURVEYOR

(i) I, KEVIN P. BIXBY

(type or print name) certify that the corner location on this record was determined by me or under my direction and control and that this U.S. Public Land Survey Monument Record is correct and complete to the best of my knowledge and belief.



Kevin P. Bixby Signature 05/25/07 Date

Stamp

Index No. _____

C-1