

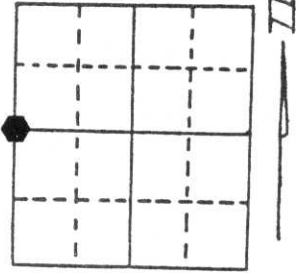
U.S. PUBLIC LAND SURVEY MONUMENT RECORD

Note: This form is intended and designed to fulfill all requirements of Wisconsin Administrative Code, Chapter A-E 5.02, U.S. Public Land Survey Monument Record (3) (a) (b) (c) (d) (e) (f) (g) (h) (i). An additional sheet may be added if necessary to conform with said requirements.

(a) Corner location: Township 35 North
 Range 4 East

Town/City/Village Somo

County Lincoln



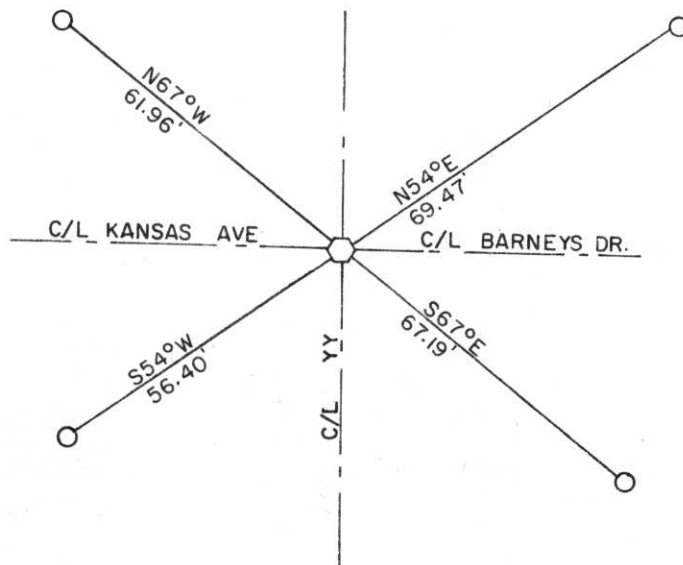
Section 6

(b) (f) (g) (h) Description of monument found at this corner and if it was accepted, state all evidence (material, testimonial, occupational, plats, records, other monuments) used as a basis for accepting. If not accepted or if nothing was found, state evidence used as basis for establishing location. If reestablished through lost corner proportionate methods, indicate all monuments, distances and directions used to establish.

- 1804 - GOV'T SURVEYOR SET 1/4 SECTION POST AND MADE THE FOLLOWING B.T.'s: HEMLOCK 10" S15°E 17 LINKS; HEMLOCK 18" S68°W 26 LINKS.
- 1923 - BURNETT FOUND WOODEN STAKE IN HIGHWAY AND STUMP OF ORIGINAL GOV'T B.T.; HEMLOCK 18" S68°W 26 LINKS
- 1996 - WILLIAM E. BANDOW SET L.C.M. AND WITNESSED AS SHOWN BELOW

**RECEIVED AT LINCOLN COUNTY
 COURTHOUSE THIS 10th DAY
 OF Sept. 1996
Pat Pruebe
 TAX DESCRIPTION OFFICE**

(c) (d) (e) Plan view of corner with ties to at least 4 witness monuments. If in disagreement with previously established corner, show the distances between the two corners and also indicate the ties to the disputed corner.



NOTE: BEARINGS TAKEN WITH A HANDHELD MAGNETIC COMPASS. NO SCALE. SET CARSTENITE POST 43' NE, CORNER IS C/L YY & C/L BARNEYS DR. SEE BACK SIDE OF THIS SHEET.

LEGEND

- SET 3/4" IRON ROD
- ◻ SET 3/4" CAPPED IRON ROD

(i) I, William E. Bandow
 (type or print name) certify that the corner location on this record was determined by me or under my direction and control and that this U.S. Public Land Survey Monument Record is correct and complete to the best of my knowledge and belief.

William E. Bandow 9-6-96
 Signature Date



Index No. C-1



NW COR.
SEC. 6

2897.86'
(2905.32' GOV'T.)
(2900.43' PROP)

N00°30'18"E

C/L KANSAS DR.

C/L BARNEYS DR.

W. 1/4 SEC. 6

2643.34'
(2640.00' GOV'T.)
(2635.55' PROP)

RANGE 3 EAST

RANGE 4 EAST

S00°44'11"W
C/L YY

SW COR.
SEC. 6

LEGEND

- ⊙ FOUND ALUMINUM MONUMENT
- ⊙ SET 3/4" CAPPED IRON ROD

NOTE:
PROPORTIONATE MEASUREMENT WAS
ASCERTAINED FROM WEST LINE
MEASUREMENT OF SOMO TOWNSHIP.

