

At _____ O'Clock _____ M
THOMAS H. LEIGHTON
REGISTER OF DEEDS
Recorders Data

This form is intended to fulfill the requirements of Chapter A-E7.08 (3)(a) thru (i) U.S. Public Land Survey Monument Location Record, Wisconsin Administrative Code. Use the reverse side of form for continuation.

U.S. PUBLIC LAND SURVEY MONUMENT LOCATION RECORD

USPLS CORNER: **SOUTH 1/4** SECTION: **35** TOWNSHIP: **36** NORTH RANGE: **4** EAST
 NAME OF WATERWAY FOR M.C. CORNER : **N/A** SECTION LINE: **N/A**
 (CITY)(VILLAGE)(TOWN) OF: **LYNNE** COUNTY OF: **ONEIDA**

Description of monument found or placed and all other evidence used as the basis for monument location; including monuments and measurements required if the corner location was reestablished by lost corner proportionate methods. Also indicate name of the original surveyor, original survey date and the corner monument, bearing trees, witness or other reference monuments established, including measured bearing and distance ties, from available survey records.

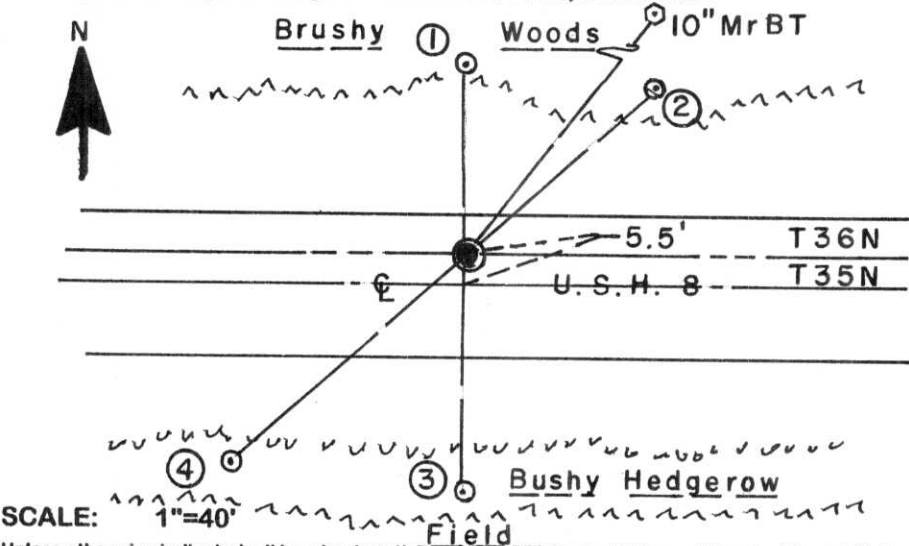
In 1864, Alexander Anderson/GLO set a wood post as original 1/4 corner and noted OBTs: a 24" Hemlock N50°E 15 links and a 10" Hemlock S60°W 20 links; all are now obliterated.

In November 1991, Glen Barker/RLS 1182 notes an 'X' at corner in concrete pavement of USH 8, set midway on a right line between opposite section corners and noted new witnesses: a standard aluminum reference monument with stamped Oneida County cap North 40.00', found OK flush to grade with standard white poly 'T' marker post 5" North; a 7" Mr N86°E 69.12' found as a 10" Mr with upper & lower blazes shut but scars plain, but at N38°E at record distance; a 1" dia. iron pipe S46°W 65.63' found OK 1" above grade and I set a yellow poly Reference Mark cap in uncapped top; an NGS cast aluminum benchmark monument cast into a 10" dia. concrete base N42°W 127.04', found OK and flush with grade. I did not detect any monument at corner location nor chiseled out pavement to find 'X' in old concrete pavement below, so I reset the corner location with a 1/4" dia. by 2.5" long Mag nail driven flush into pavement using ties from record witness monuments North and SW; all per Barkers U.S. Public Land Survey Monument record, dated November 4, 1991, as filed in Oneida County records. This corner rereferenced with approval of Oneida County Surveyor Michael Romportl.

In June 1991, Barker notes an 'X' in pavement at this corner per his retracement survey of Section 35 filed as B-3036 in Oneida County survey records.

This recovery completed September 6, 2006; there were no direct witnesses.

Plan view map of monument location with bearing and distance ties to a minimum of four(4) described witness or reference monuments of concrete, natural stone, iron, live bearing trees or equivalent material. If applicable, also show a minimum of two(2) bearing and distance ties to any other monument found and not accepted; including the bearing and distance from the accepted monument.

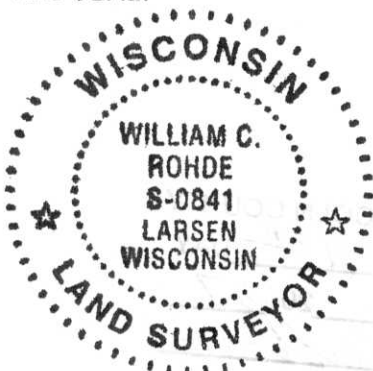


WITNESS MONUMENT TIES:

- ① Found aluminum onument with stamped Oneida County cap flush at grade North 40.00'.
- ② Set a 5/8" dia. by 24" long rebar with yellow poly Reference Mark cap 2" above grade N48°E 52.28'.
- ③ Same capped rebar set South 49.55' on a right line thru corner to Witness Monument No. 1.
- ④ Found an older 1" dia. iron pipe I capped S48°W 65.63'. I set a blaze orange wire stake flag at each witness monument.

Unless otherwise indicated, all bearing tree ties are to a .25" dia. by 2.5" long PK nail with a 1.25" dia. steel washer driven into unblazed right face and a .25" dia. by 2.5" long PK nail with a 2" dia. steel washer stamped BT is also driven into unblazed face of bearing tree at DBH; the basis for measured bearings is by compass to nearest degree and all tie distances are measured horizontal by steel tape corrected to nearest 1/100th feet at standard temperature of 68° F.

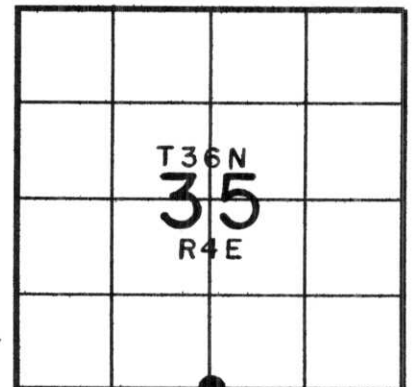
RLS SEAL:



LAND SURVEYOR CERTIFICATE:

I, William C. Rohde, hereby certify that I am duly licensed as a Professional Land Surveyor in the State of Wisconsin; that this USPLS monument location was determined by me and/or under my direct supervision and control; and that this U.S. Public Land Survey Monument Location Record is true and correct to the best of my knowledge and belief.

Signed: *William C. Rohde*
William C. Rohde RLS 841



SECTION LOCATION MAP
INDEX NO. _____

A-19

U.S. PUBLIC LAND SURVEY MONUMENT RECORD

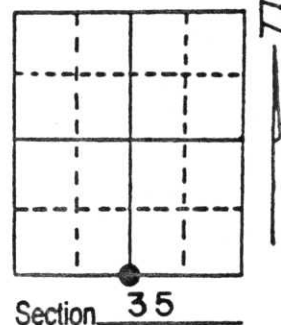
Note: This form is intended and designed to fulfill all requirements of Wisconsin Administrative Code, Chapter A-E 5.02, U.S. Public Land Survey Monument Record (3) (a) (b) (c) (d) (e) (f) (g) (h) (i). An additional sheet may be added if necessary to conform with said requirements.

(a) Corner location: Township 36 North

Range 4 East ~~West~~

Town/City/Village Lynne

County Oneida



Ncr 2-35-4

Section 35

(b) (f) (g) (h) Description of monument found at this corner and if it was accepted, state all evidence (material, testimonial, occupational, plats, records, other monuments) used as a basis for accepting. If not accepted or if nothing was found, state evidence used as basis for establishing location. If reestablished through lost corner proportionate methods, indicate all monuments, distances and directions used to establish.

Re-established by Proportionate method.

Total distance from established Southwest Section Corner to re-established Southeast Section Corner is 5255.33'.

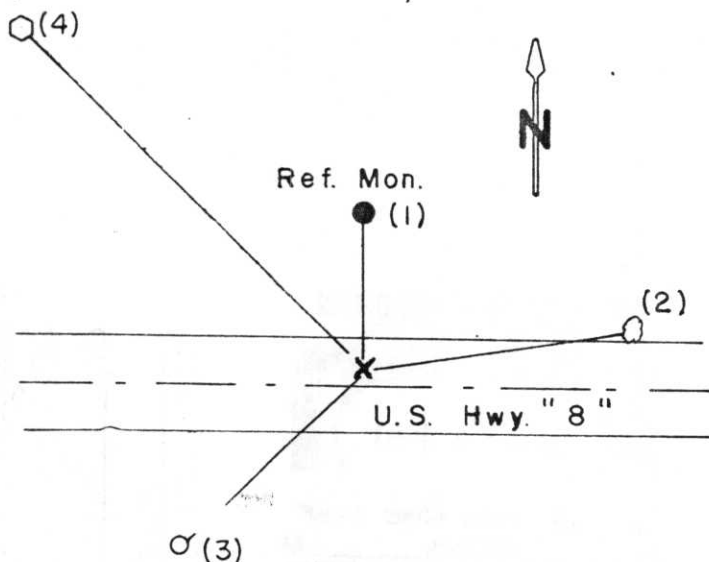
Set Quarter Section Corner 2627.66' intermediate.

Corner falls in North lane of U.S. Hwy "8". Chisled X in concrete.

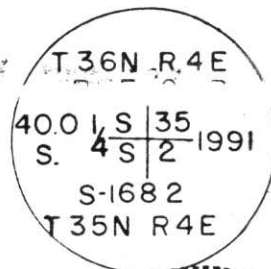
Set a 2-1/4" Oneida County Aluminum pipe with 3-1/4" alloy cap 40' North for reference Corner.

Original corner established by Alex Anderson, Gov't Deputy Surveyor in 1864, from which 24" Hemlock bears N50E, 15 lks. and 10" Hemlock bears S60W, 20 lks.

(c) (d) (e) Plan view of corner with ties to at least 4 witness monuments. If in disagreement with previously established corner, show the distances between the two corners and also indicate the ties to the disputed corner.



- (1) 2-1/4" Ref. Mon. North 40.00'
- (2) 7" Red Maple N86°E 69.12'
- (3) 1" Iron Pipe S46°W 65.63'
- (4) Bench Mark N42°W 127.04'



(i) I, Glen Barker
 (type or print name) certify that the corner location on this record was determined by me or under my direction and control and that this U.S. Public Land Survey Monument Record is correct and complete to the best of my knowledge and belief.

Glen Barker 11/4/91
 Signature Date



Index No. 19

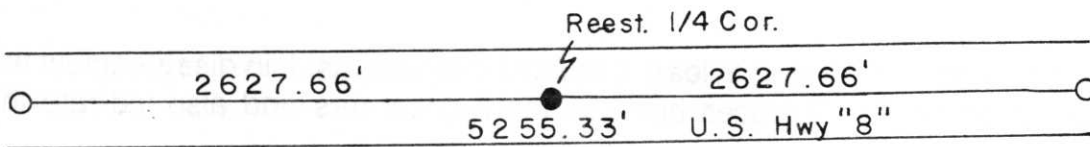
UNRECORDED



T 36N

34 | 35
3 | 2

T 35N



35 | 36 R4 E
2 | 1

REGISTER OF DEEDS OFFICE
ONEIDA COUNTY, WIS.

FILED

DEC 23 1991

At _____ O'Clock _____ M
THOMAS H. LEIGHTON
 REGISTER OF DEEDS

RECEIVED AT LINCOLN COUNTY
 COURTHOUSE THIS 31ST DAY
 OF Jan 1992.

TAX DISCUSSION OFFICE
Pat Buckley