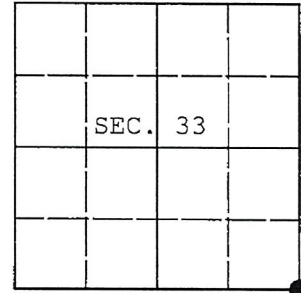


U.S. PUBLIC LAND SURVEY MONUMENT RECORD

Note: This form is intended and designed to fulfill all requirements of Wisconsin Administrative Code, Chapter A-E 7.08 U.S. Public Land Survey Monument Record (3) (a) (b) (c) (d) (e) (f) (g) (h) (i). An additional sheet may be added if necessary to conform with said requirements.

(a) CORNER LOCATION: WISCRS - Oneida County
 Cor. of Secs. 3, 4, 33 & 34 N: 134,838.26 USft
 Township 35 & 36 North E: 118,024.24 USft
 Range 4 East of the 4th P.M. Datum: NAD 1983(2011)
 Town of Lynne County of Oneida



(b) HISTORY OF ORIGINAL CORNER ESTABLISHMENT

Original Surveyor: Original Accessories:
 Date of Survey: Commenced:
 Completed:

(b) (f) (g) (h) Description of monument found at this corner and if it was accepted, state all evidence (material, testimonial, occupational, plats, records, other monuments) used as a basis for accepting. If not accepted or if nothing was found, state evidence used as basis for establishing location. If re-established through lost corner proportionate methods, indicate all monuments, distances and directions used to establish. Indicate type of monument and sign post found or set.

NOTE: This is a perpetuation of a previous USPLS Monument Record by Matthew E. Hoglund, RLS dated October 12, 2006 and filed in the office of the Oneida County Register of Deeds. A complete history of the corner can be found on the previous monument record. I accept the previous location as a true and faithful perpetuation or reestablishment of the original corner location and further perpetuate it as follows.

April 3, 2016: I found and accepted a perpetuation of the record monument, a Berntsen "Survey Mark" nail in the Westbound lane of U.S. Highway 8. The existing accessories were found in substantial agreement with the record and were not remeasured as the sole purpose of this work is to report the coordinates of the corner point.

The coordinates shown were derived from two independent RTK observations of the corner point and are referenced to the WISCORS GNSS Network.

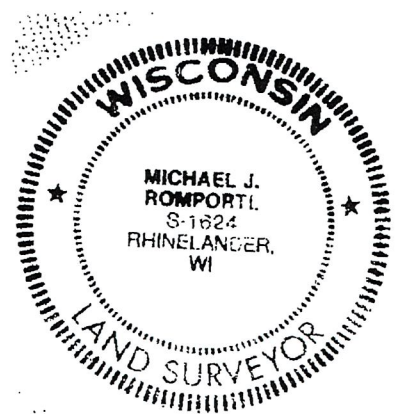
(c) (d) (e) Plan view of corner with ties to at least 4 witness monuments. If in disagreement with previously established corner, show the distances between the two corners and also indicate the ties to the disputed.

REGISTER OF DEEDS OFFICE
 ONEIDA COUNTY
 FILED

DEC 28 2016

AT _____ O'CLOCK _____ M
 KYLE J. FRANSON
 REGISTER OF DEEDS

RECEIVED BY LINCOLN COUNTY
 SURVEYOR THIS 17TH DAY
 OF January 20 18
Tony Dally
 COUNTY SURVEYOR



(i) I, Michael J. Romportl, Professional Land Surveyor No. S-1624, hereby certify that the corner location on this record was determined by me or under my direction and control and that this U.S. Public Land Survey Monument Record is correct and complete to the best of my knowledge and belief.

Michael J Romportl 12/23/2016
 Signature Date

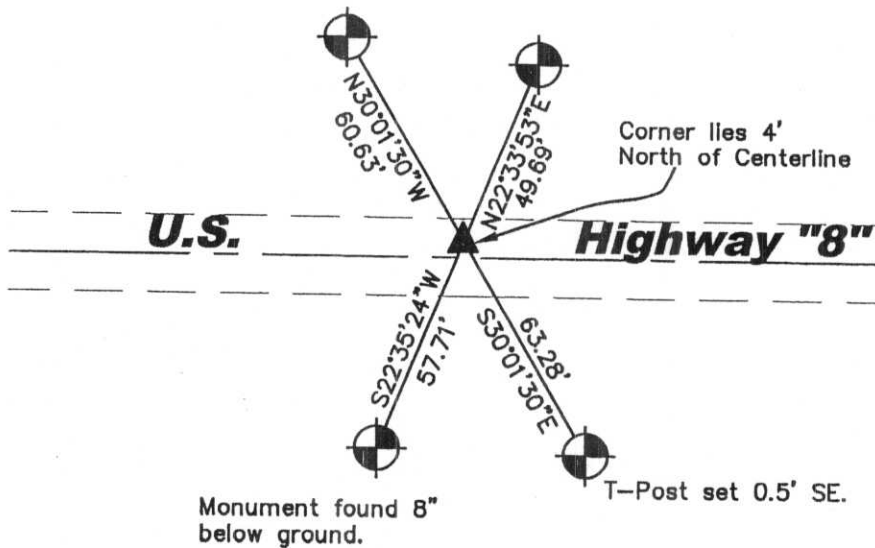
A-13

U.S. PUBLIC LAND SURVEY MONUMENT RECORD

(c)(d)(e) Plan view of corner with ties to at least 4 witness monuments. If in disagreement with previously established corner, show the distances between the two corners and also indicate the ties to the disputed corner.



Scale: 1" = 50'



LEGEND



D.O.T. Aluminum Reference Mon. Found



Set P.K. Nail

RECEIVED BY LINCOLN COUNTY
 SURVEYOR THIS 19TH DAY
 OF April 20 07
Tony Dahr
 COUNTY SURVEYOR

(i) I, Matthew E. Hoglund, certify that the corner location on this record was determined by me under my direction and control and that this U.S. Public Land Survey Monument is correct and complete to the best of my knowledge and belief.

Signature Matthew E. Hoglund Date 10/12/2006

MATTHEW E. HOGGLUND
 S 1910
 TOMAHAWK
 WI
 LAND SURVEYOR

Proj. #732

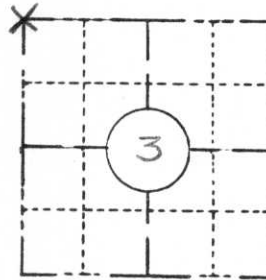
Sheet 2 of 2

360433 0000

PRESERVATION OF LANDMARKS

(Pursuant to Section 59.635(7) Wisconsin Statutes)

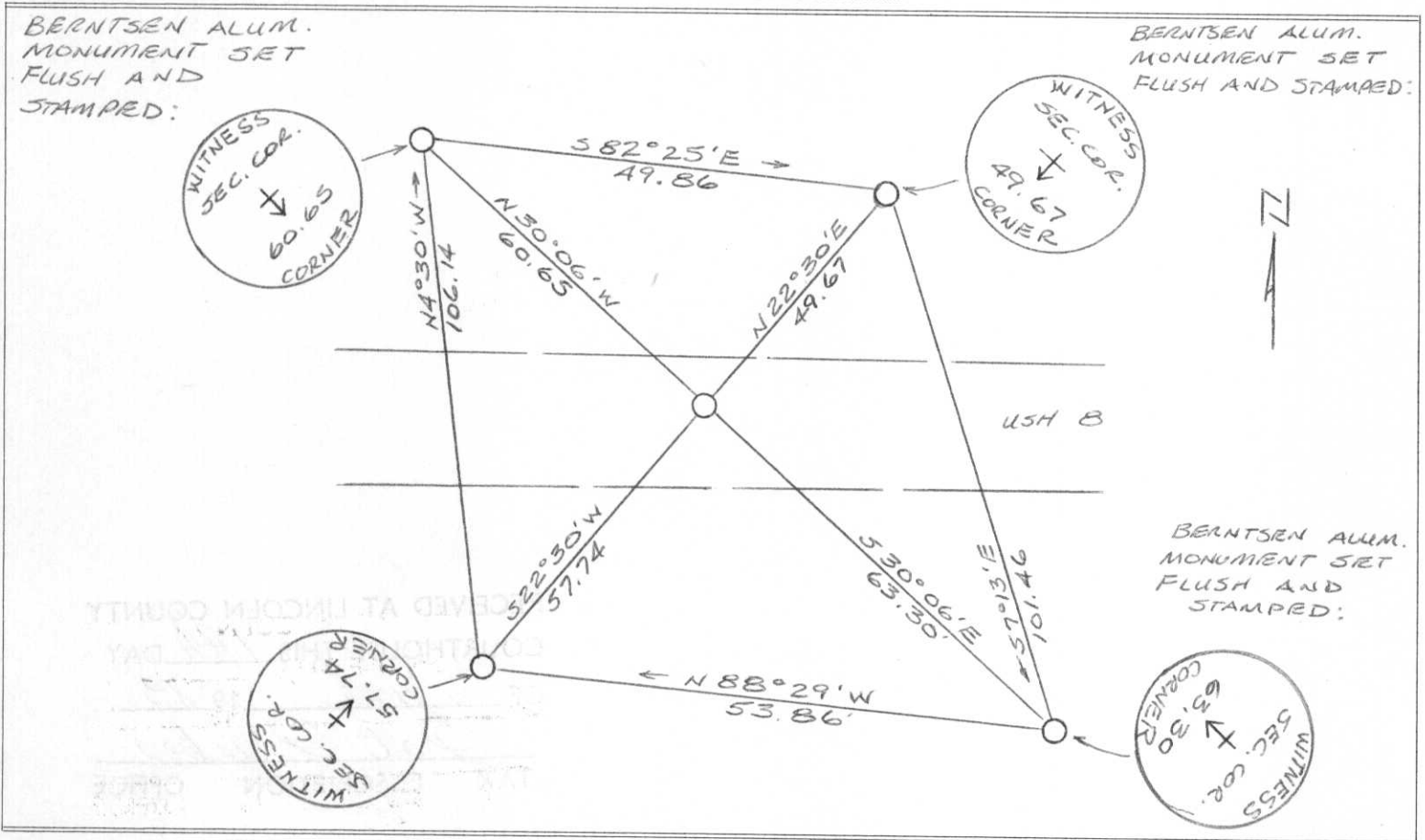
COUNTY <i>LINCOLN</i>		
TOWN <i>Somo</i>		
HIGHWAY <i>USH 8</i>		
SECTION <i>3</i>	TOWNSHIP <i>T 35 N</i>	RANGE <i>RAE</i>
TYPE OF LANDMARK <i>BERNTSEN ALUMINUM MONUMENT</i>		



LOCATION SKETCH
(Location of landmark indicated by "x")



This space for copy of field notes or ties to the above described landmarks



FILED UNDER PROJECT NUMBER <i>1580-06-00</i>		
SHC DISTRICT OFFICE NUMBER <i>7</i>	CITY <i>Rhineland</i>	COUNTY <i>ONEIDA</i>
LOCATED OR ESTABLISHED BY NAME <i>JACK WALLIN</i> TITLE <i>Survey Crew Chief</i> DATE <i>6/9/83</i>		

COUNTY CLERK'S OFFICE COUNTY OF <i>Lincoln</i> WISCONSIN } SS	
DATE RECEIVED FOR RECORD <i>6/13/83</i>	DATE COPY SENT TO COUNTY SURVEYOR <i>6/15/83</i>
SIGNATURE OF COUNTY CLERK <i>Kandalaug</i>	

794+18

A-13

CERTIFIED LAND CORNER RESTORATION

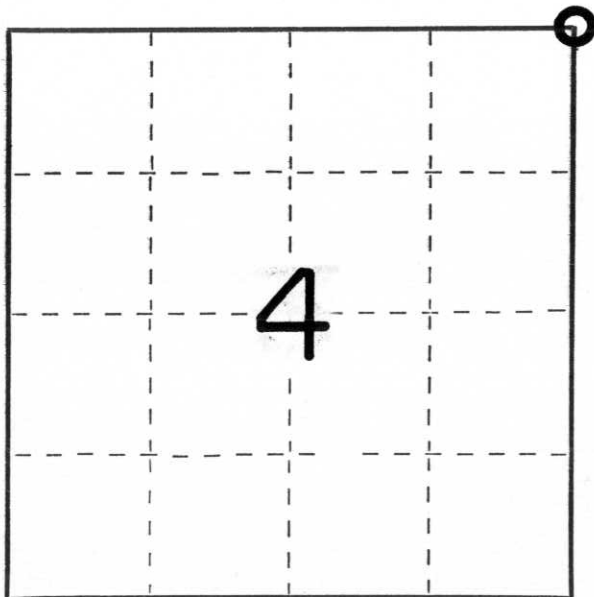
Index No. A-13

State of Wisconsin }
County of Lincoln } ss.

I, Robert H. Winat, do hereby certify that on the 15th day of January, 1973, I found evidence of the northeast section corner of Section 3 4 Township 35, North, Range 4 East, Fourth, Principal Meridian, as described hereon; and that from this evidence I established a new monument and accessories as described hereon to perpetuate the original location of this corner.

Resident witnesses:

.....
.....
.....



○ = Corner monument restored.

History of original corner establishment:

Surveyor: Alex Anderson

Date: July, 1864

Monumentation: Wood post

Witnesses: 12" Birch N55°W, 11 lks.
24" W. Pine N38°E, 48 lks.
12" Birch S38°E, 17 lks.
10" Fir S34°W, 18 lks.

Description of corner evidence found:

This corner was re-established by using the northeast corner of Section 3 and the north one-quarter corner of Section 3 as re-established by use of D. S. Burnett's 1923 resurvey and the Division of Highway's survey of 1925 and the north one-quarter of Section 4 as perpetuated. The north line of Section 3 was projected westerly for the proportioned distance between the one-quarter corners as found in D. S. Burnett's 1923 resurvey. This location checks the information on the east line of Section 4 as noted in Burnett's resurvey notes, although the Division of Highways' 1925 and 1945 surveys indicate a point NE'ly. 6 feet. The iron rod set by the Division of Highways & A.W. Kordick was not found.

Description of monument and accessories I established to perpetuate the original location of this corner.

Berntsen monument 36" 4 feet north of centerline U.S. Highway "8"

PK nail in 3" Balsam N45°W, 65.17'
PK nail in 8" N. Pine S17°W, 245.00'
1" RHW capped iron pipe S3°E, 60.21'
1" RHW capped iron pipe S3°E, 104.21'

Dated at Minocqua, Wis., this 17 day of November, 1974

Signature Robert H. Winat Title Land Surveyor Registration No. S-1040
(County Surveyor, Registered Land Surveyor, or other duly authorized official)

Office of Register of Deeds, County of....., I hereby certify that the within instrument was filed in this office for record on the.....day of....., 19..... at.....o'clock..... M..

.....
(Register of Deeds)

By.....Deputy