

# U.S. PUBLIC LAND SURVEY MONUMENT RECORD

NOTE: THIS FORM IS INTENDED AND DESIGNED TO FULFILL ALL REQUIREMENTS OF WISCONSIN ADMINISTRATIVE CODE, CHAPTER A-E 7.08, U.S. PUBLIC LAND SURVEY MONUMENT RECORD (3)(a)(b)(c)(d)(e)(f)(g)(h)(i). ADDITIONAL SHEETS MAY BE NECESSARY TO CONFORM TO SAID REQUIREMENTS.

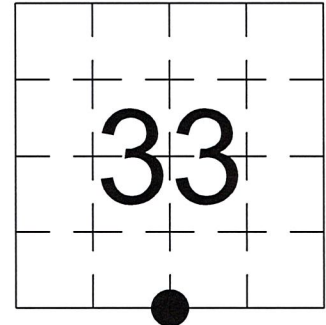
T 34 N, R 8 E

**(a) CORNER LOCATION:**

SOUTH QUARTER CORNER, SECTION 33  
 TOWNSHIP 34 NORTH  
 RANGE 8 EAST  
 TOWN OF HARRISON  
 LINCOLN COUNTY  
 WISCONSIN

**(b) HISTORY OF ORIGINAL CORNER:**

ORIGINAL SURVEYOR: James M. Marsh, Set post  
 COMMENCING DATE: July 29, 1851  
 COMPLETION DATE: August 11, 1851  
 ORIGINAL BEARING TREES:  
 12" Hemlock; N 88° E; 230 links  
 12" Hemlock; S 88° E; 215 links

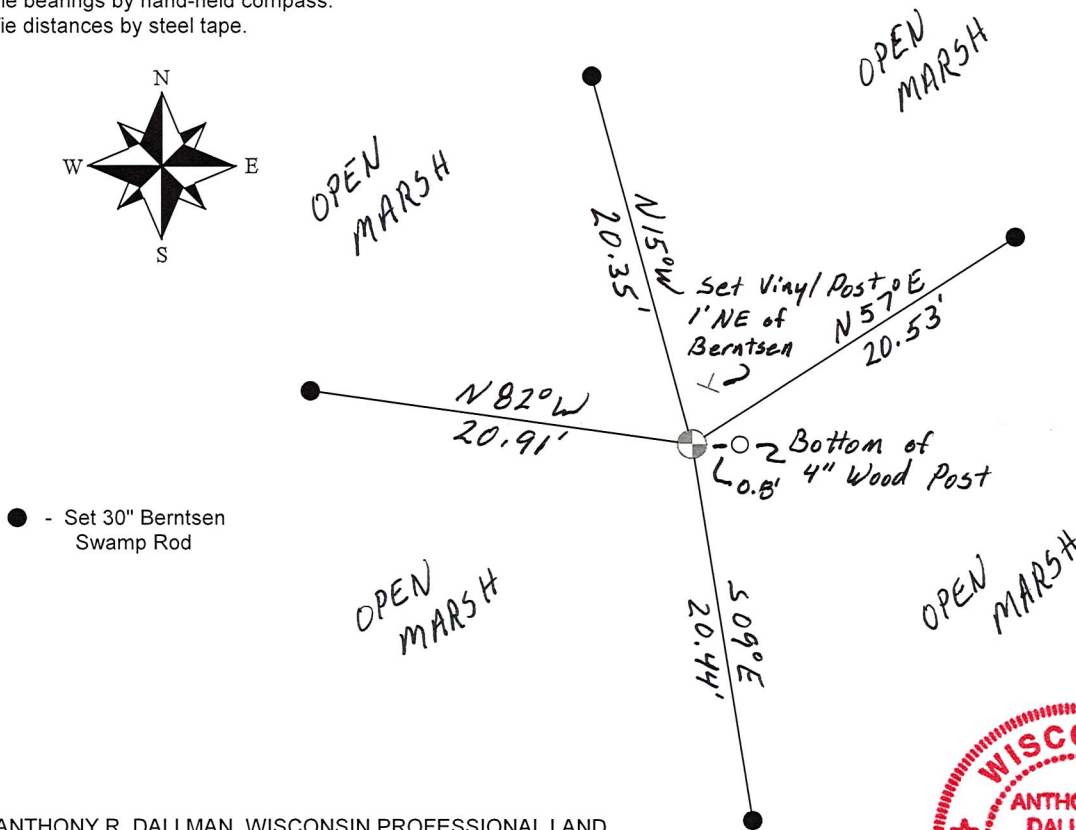


**(f)(g)(h) DESCRIPTION OF MONUMENT FOUND AT THIS CORNER AND IF IT WAS ACCEPTED. STATE ALL EVIDENCE (MATERIAL, TESTIMONIAL, OCCUPATIONAL, PLATS, RECORDS, OTHER MONUMENTS) USED AS A BASIS FOR ESTABLISHING LOCATION. IF RE-ESTABLISHING THROUGH LOST CORNER PROPORTIONATE METHODS, INDICATE ALL MONUMENTS, DISTANCES, AND DIRECTIONS USED TO ESTABLISH. INDICATE TYPE OF MONUMENTS FOUND OR SET.**

08/23/2018, I, Anthony R. Dallman, PLS-2405, found bottom portion of a squared 4" wood post that I found, in 2003, in an open marsh. While removing said wood post, I found the bottom portion of a round 4" wood post 0.8' East of the squared post. I set a 60" Berntsen Swamp in the location of the squared wood post and reset the wood post directly North of the Swamp Rod. I accepted this location and set reference ties to further perpetuate the corner location, as shown in the sketch below.

**(c)(d)(e) PLAN VIEW OF THE CORNER WITH TIES TO AT LEAST FOUR WITNESSES. IF IN DISAGREEMENT WITH PREVIOUSLY ESTABLISHED CORNER, SHOW THE DISTANCES BETWEEN THE TWO CORNERS AND ALSO THE TIES TO THE DISPUTED CORNER.**

- Tie bearings by hand-held compass.
- Tie distances by steel tape.



I, ANTHONY R. DALLMAN, WISCONSIN PROFESSIONAL LAND SURVEYOR, S-2405, HEREBY CERTIFY THAT THE CORNER LOCATION ON THIS RECORD WAS REFERENCED BY ME OR UNDER MY DIRECTION AND CONTROL AND THAT THIS U.S. PUBLIC LAND SURVEY MONUMENT RECORD IS COMPLETE TO THE BEST OF MY KNOWLEDGE AND BELIEF.



*Anthony R. Dallman* 3/15/19  
 ANTHONY R. DALLMAN, PLS S-2405