

U.S. PUBLIC LAND SURVEY MONUMENT RECORD

NOTE: THIS FORM IS INTENDED AND DESIGNED TO FULFILL ALL REQUIREMENTS OF WISCONSIN ADMINISTRATIVE CODE, CHAPTER A-E 7.08, U.S. PUBLIC LAND SURVEY MONUMENT RECORD (3)(a)(b)(c)(d)(e)(f)(g)(h)(i). ADDITIONAL SHEETS MAY BE NECESSARY TO CONFORM TO SAID REQUIREMENTS.

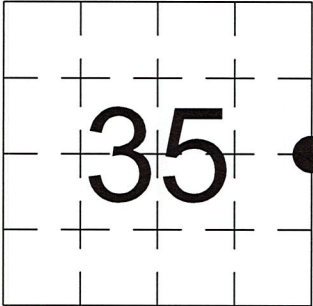
T 34 N, R 8 E

(a) CORNER LOCATION:

EAST 1/4 CORNER, SECTION 35
TOWNSHIP 34 NORTH
RANGE 8 EAST
TOWN OF HARRISON
LINCOLN COUNTY
WISCONSIN

(b) HISTORY OF ORIGINAL CORNER:

ORIGINAL SURVEYOR: See Previous Tie Sheet
COMMENCING DATE:
COMPLETION DATE:
ORIGINAL BEARING TREES:



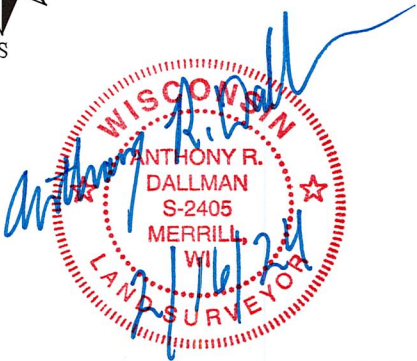
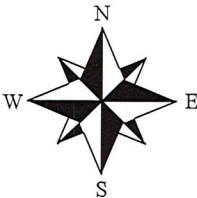
(f)(g)(h) DESCRIPTION OF MONUMENT FOUND AT THIS CORNER AND IF IT WAS ACCEPTED. STATE ALL EVIDENCE (MATERIAL, TESTIMONIAL, OCCUPATIONAL, PLATS, RECORDS, OTHER MONUMENTS) USED AS A BASIS FOR ESTABLISHING LOCATION. IF RE-ESTABLISHING THROUGH LOST CORNER PROPORTIONATE METHODS, INDICATE ALL MONUMENTS, DISTANCES, AND DIRECTIONS USED TO ESTABLISH. INDICATE TYPE OF MONUMENTS FOUND OR SET.

11/15/1974, William F. Kelly found and accepted 6" X 6" Granite Monument.

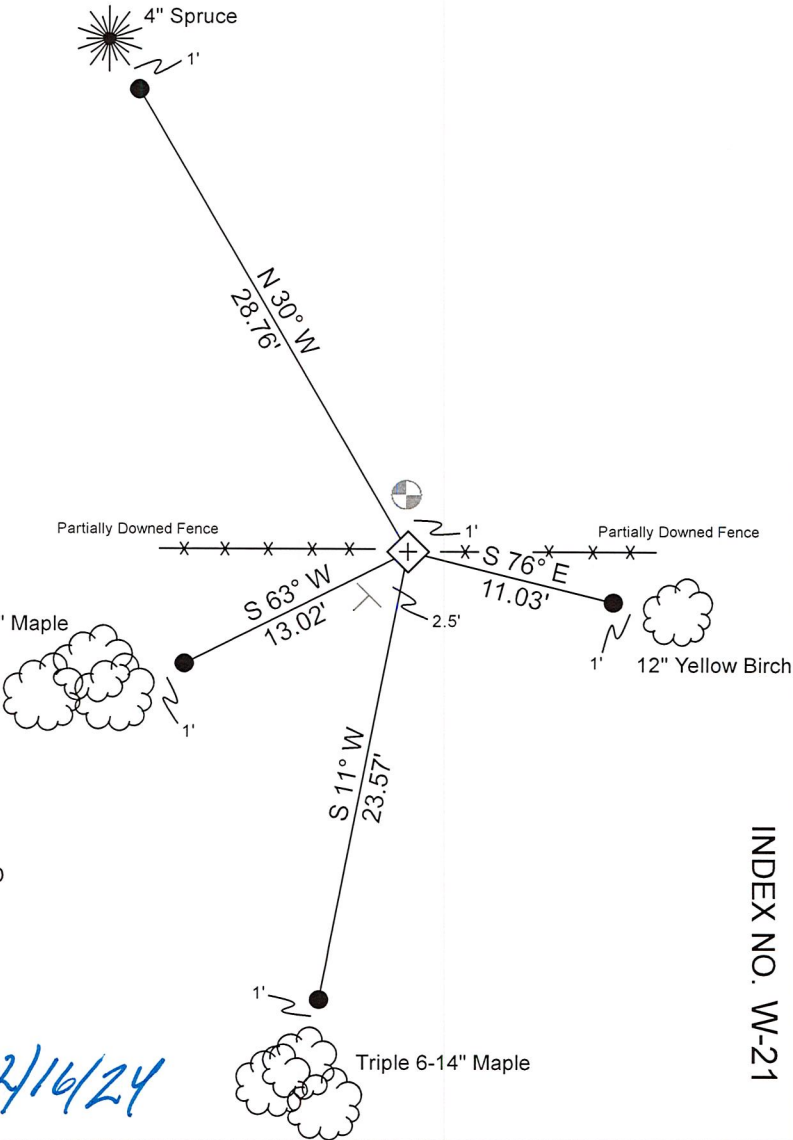
9/29/2023, I, Anthony R. Dallman, PLS-2405, found a 6" X 6" Granite Monument, up 10". I accepted this location and set witness monuments, as shown in the sketch below, to further perpetuate the corner location.

(c)(d)(e) PLAN VIEW OF THE CORNER WITH TIES TO AT LEAST FOUR WITNESSES. IF IN DISAGREEMENT WITH PREVIOUSLY ESTABLISHED CORNER, SHOW THE DISTANCES BETWEEN THE TWO CORNERS AND ALSO THE TIES TO THE DISPUTED CORNER.

- Tie bearings by hand-held compass.
- Tie distances by steel tape.
- Not to scale.



- Berntsen Monument
- Set 3/4" Capped Rebar
- Set Vinyl Post



I, ANTHONY R. DALLMAN, WISCONSIN PROFESSIONAL LAND SURVEYOR, S-2405, HEREBY CERTIFY THAT THE CORNER LOCATION ON THIS RECORD WAS REFERENCED BY ME OR UNDER MY DIRECTION AND CONTROL AND THAT THIS U.S. PUBLIC LAND SURVEY MONUMENT RECORD IS COMPLETE TO THE BEST OF MY KNOWLEDGE AND BELIEF.

Anthony R. Dallman 02/16/24
ANTHONY R. DALLMAN, PLS S-2405

INDEX NO. W-21

43408352000

43408352000_Mon-N



43408352000_North



43408352000_West



43408352000_South



43408352000_East

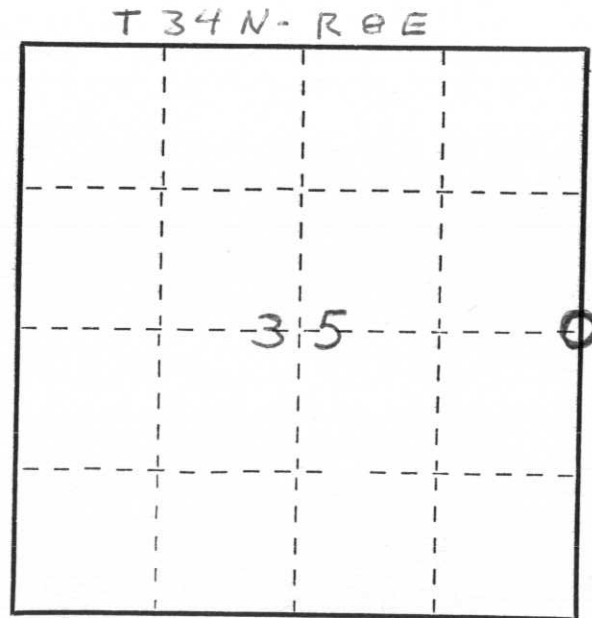


State of Wisconsin }
County of LINCOLN } ss.

I, William F. Kelly, do hereby
certify that on the 15TH day
of NOVEMBER, 1974, I found
evidence of the EAST 1/4
corner of SECT 35
Township 34, North, Range
8 E, Fourth, Principal Meridian,
as described hereon; and that from this evidence
I established a new monument and accessories
as described hereon to perpetuate the original
location of this corner.

Resident witnesses:

RICHARD HANSON



○ = Corner monument restored.

CERTIFIED LAND CORNER RESTORATION

History of original corner establishment:

GRANITE MONUMENTS IN THIS AREA
WERE SET IN THE 1920'S PER
AREA RESIDENTS

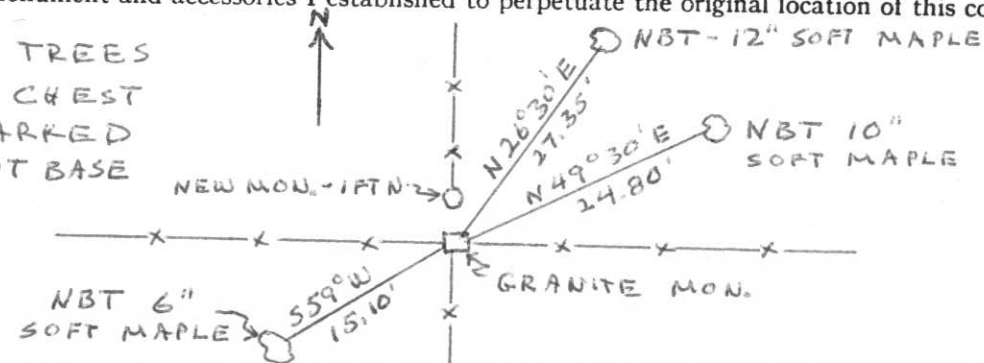
Description of corner evidence found:

I FOUND A 6" x 6" GRANITE MONUMENT MARKED 35 + 36
AT FENCE INTERSECTION. CORNER IS IN A WET
AREA.

I SET A NEW COUNTY MONUMENT 1 FT NORTH OF
THE CORNER AND PLACED STONES AROUND
THE MON.

Description of monument and accessories I established to perpetuate the original location of this corner.

NEW BEARING TREES
BLAZED NBT CHEST
HIGH AND MARKED
WITH A + AT BASE



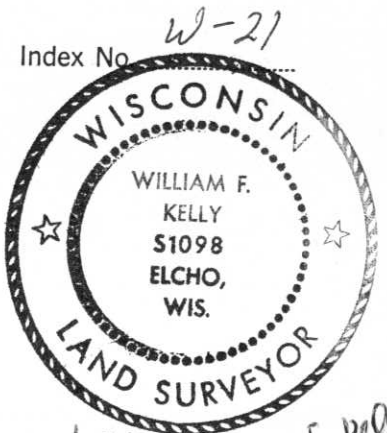
Dated at ELCHO, Wis., this 15TH day of NOVEMBER, 1974.

Signature William F. Kelly Title REG. LAND SURVEYOR Registration No. S-1098
(County Surveyor, Registered Land Surveyor, or other duly authorized official)

Office of Register of Deeds, County of _____, I hereby certify that the within
instrument was filed in this office for record on the _____ day of _____, 19____
at _____ o'clock _____ M.

(Register of Deeds)

By _____ Deputy



William F. Kelly

1/4 SECT COR
35 + 36
T 34 N - R 8 E
COR 1 FT S
W F K