

CERTIFIED LAND CORNER RESTORATION

Index No. U-23

State of Wisconsin }  
County of LINCOLN } ss.

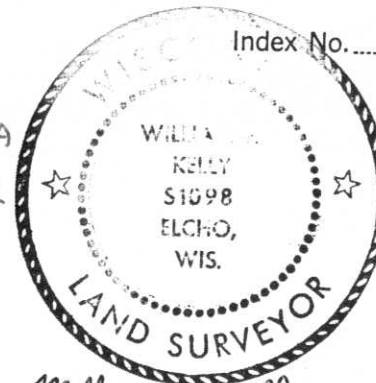
I, William F. Kelly, do hereby certify that on the 15<sup>TH</sup> day of NOVEMBER, 1974, I found evidence of the SOUTH 1/4 corner of SECT 25 Township 34, North, Range 8 E, Fourth, Principal Meridian, as described hereon; and that from this evidence I established a new monument and accessories as described hereon to perpetuate the original location of this corner.

Resident witnesses:

Richard Hanson

History of original corner establishment:

GRANITE MONUMENTS IN THIS AREA WERE SET IN THE 1920'S PER AREA RESIDENTS



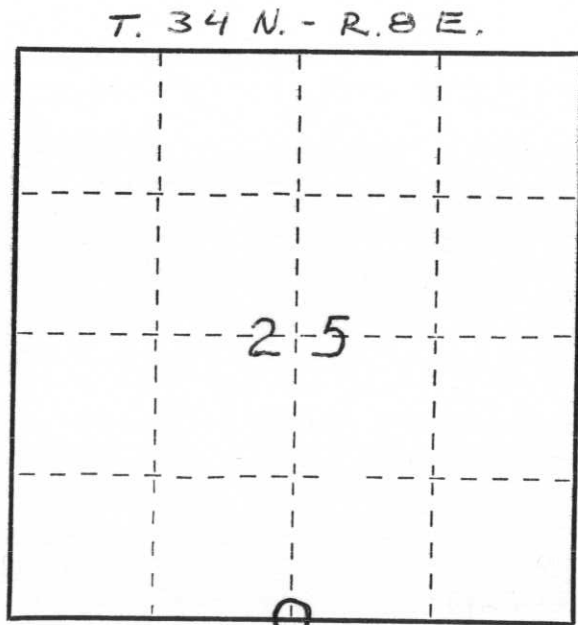
Description of corner evidence found:

I FOUND A 6"X6" GRANITE MONUMENT MARKED IN A SPRUCE SWAMP 35 FT WEST OF ACCESS ROAD TO THE PRAIRIE RIVER

William F. Kelly  
12 5  
36

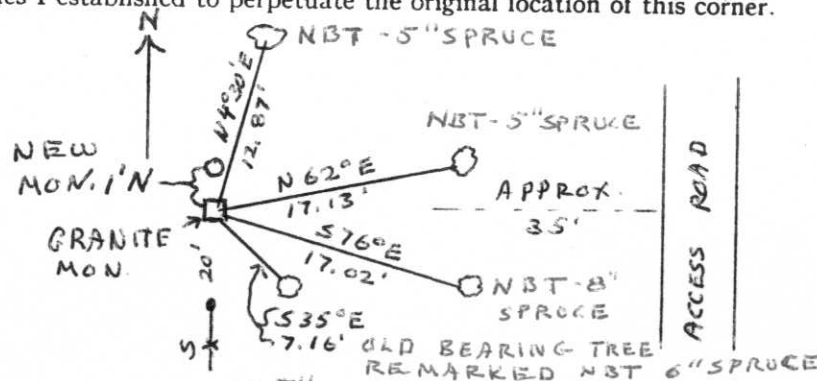
I SET A NEW COUNTY MONUMENT 1 FT. NORTH OF THE GRANITE MONUMENT AND PLACED STONES AROUND BOTH MON.

Description of monument and accessories I established to perpetuate the original location of this corner.



1/4 SECT COR 25 36 T34N R8E COR 1 FT S WFK

NEW BEARING TREES BLAZED NBT CHEST HIGH AND MARKED WITH A + AT BASE



Dated at ELCHO, Wis., this 15<sup>TH</sup> day of NOVEMBER, 1974.

Signature William F. Kelly Title REG. LAND SURVEYOR Registration No. S-1098  
(County Surveyor, Registered Land Surveyor, or other duly authorized official)

Office of Register of Deeds, County of \_\_\_\_\_, I hereby certify that the within instrument was filed in this office for record on the \_\_\_\_\_ day of \_\_\_\_\_, 19\_\_\_\_ at \_\_\_\_\_ o'clock \_\_\_\_\_ M.

(Register of Deeds)

By \_\_\_\_\_ Deputy

○ = Corner monument restored.