



CERTIFIED LAND CORNER RESTORATION

Index No. U-19

State of Wisconsin }  
 County of LINCOLN } ss.

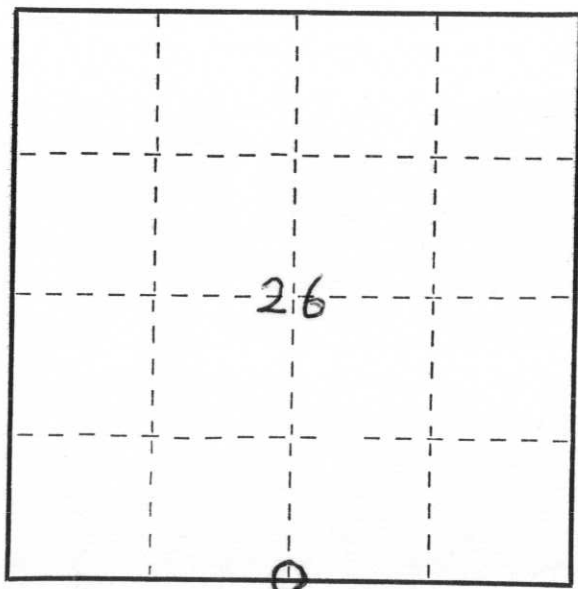
I, WILLIAM F. KELLY, do hereby certify that on the 26<sup>th</sup> day of NOVEMBER, 19 74, I found evidence of the 1/4 SECTION corner of SECTION 26 & 35 Township 34, North, Range 8 East, Fourth, Principal Meridian, as described hereon; and that from this evidence I established a new monument and accessories as described hereon to perpetuate the original location of this corner.

Resident witnesses:

N. Dirky

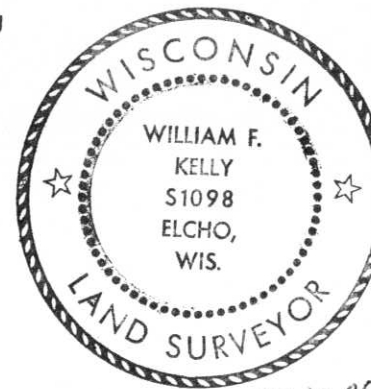
W. Friedenfeldt

T34N-R8E



○ = Corner monument restored.

History of original corner establishment:

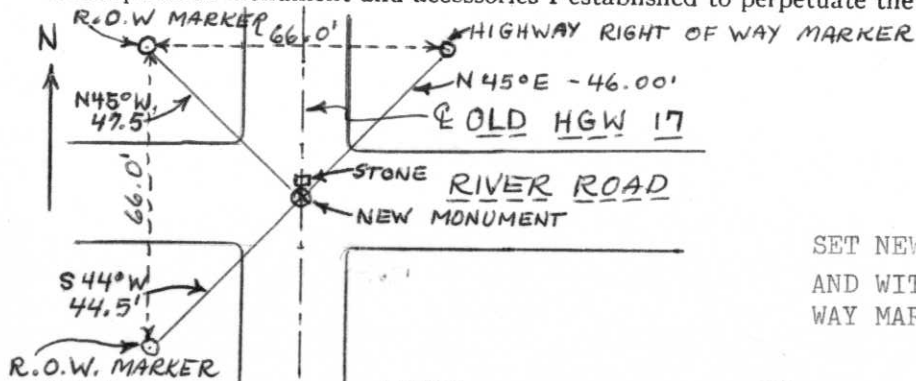


*William F. Kelly*

Description of corner evidence found:

LOCATED PAINTED MARK ON OLD ROAD SURFACE IDENTIFIED AS CORNER POSITION OVER MONUMENT BURIED UNDER PAVEMENT.

Description of monument and accessories I established to perpetuate the original location of this corner.



SET NEW MONUMENT 6" UNDER SURFACE OF ROAD AND WITNESSED CORNER TO HIGHWAY RIGHT OF WAY MARKERS.

Dated at ELCHO, Wis., this 26<sup>th</sup> day of NOVEMBER, 19 74.

Signature William F. Kelly Title REGISTERED LAND SURVEYOR Registration No. S 1098  
 (County Surveyor, Registered Land Surveyor, or other duly authorized official)

Office of Register of Deeds, County of \_\_\_\_\_, I hereby certify that the within instrument was filed in this office for record on the \_\_\_\_\_ day of \_\_\_\_\_, 19 \_\_\_\_\_ at \_\_\_\_\_ o'clock \_\_\_\_\_ M.

(Register of Deeds)

By \_\_\_\_\_ Deputy