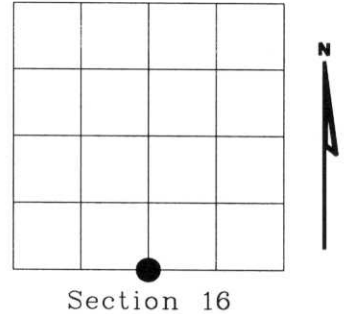


# U.S. PUBLIC LAND SURVEY MONUMENT RECORD

NOTE: This form is intended and designed to fulfill all requirements of Wisconsin Administrative Code, Chapter A-E 7.08 U.S. Public Land Survey Monument Record (3)(a)(b)(c)(d)(e)(f)(g)(h)(i). An additional sheet may be added if necessary to conform with said requirements.

(a) Corner location: Township 34 North  
 Range 08 East  
 Town of HARRISON  
 LINCOLN County, Wisconsin



(b)(f)(g)(h) Description of monument found at this corner and if it was accepted, state all evidence (material, testimonial, occupational, plats, records, other monuments) used as a basis for accepting. If not accepted or if nothing was found, state evidence used as basis for establishing location. If reestablished through lost corner proportionate methods, indicate all monuments, distances and directions used to establish. Indicate type of monument found or set and sign post.

1854 - Original corner set by Jackson L. Prentice.

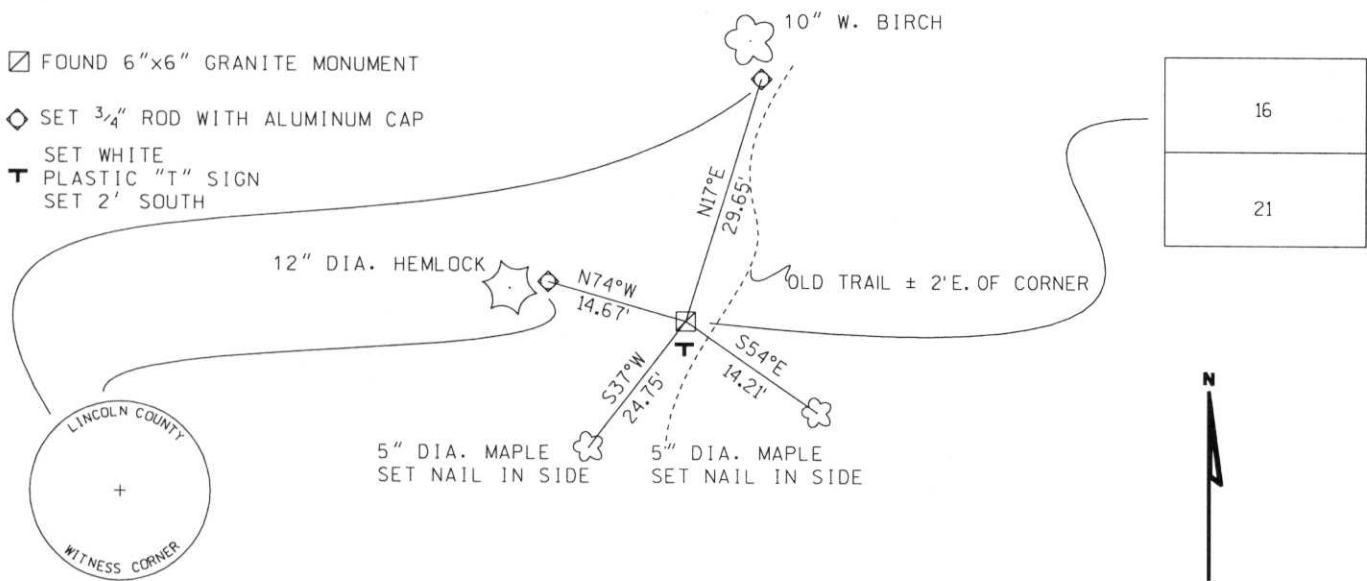
1938 - Frances Fuchs found 1/4 post set 6"x6" granite stone in rock mound.  
 BTs: 16" Hemlock N15°E, 2.4' (Old)  
 6" Hemlock S66°W, 53.8' (Set)

2002 - I found 6"x6" granite stone in rock mound. Found blazed line painted blue west and south.  
 BTs found: 16" Hemlock stump N15°E, 2.4' (Fuchs)  
 6" Hemlock S66°W 53.8' (Fuchs)

Witness corner as shown below.

RECEIVED AT LINCOLN COUNTY  
 COURTHOUSE THIS 11<sup>TH</sup> DAY  
 OF December 20 02  
*Tommy Duth*  
 LAND INFORMATION OFFICE

(c)(d)(e) Plan view of corner with ties to at least 4 witness monuments. If in disagreement with previously established corner, show the distances between the two corners and also indicate the ties to the disputed corner.



hereby certify that the corner location on this record was determined by me or under my direction and control and that this U.S. Public Land Survey Monument Record is correct and complete to the best of my knowledge and belief.

*Dennis B. Roberts*  
 Signature

12-03-02  
 Date



Index No. 11