

# U.S. PUBLIC LAND SURVEY MONUMENT RECORD

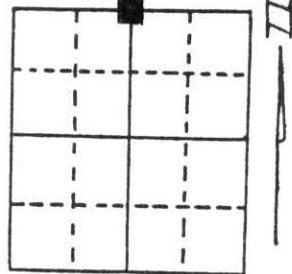
Note: This form is intended and designed to fulfill all requirements of Wisconsin Administrative Code, Chapter A-E 5.02, U.S. Public Land Survey Monument Record (3) (a) (b) (c) (d) (e) (f) (g) (h) (i). An additional sheet may be added if necessary to conform with said requirements.

(a) Corner location: Township 34 North

Range 8 East

Town/City/Village Harrison

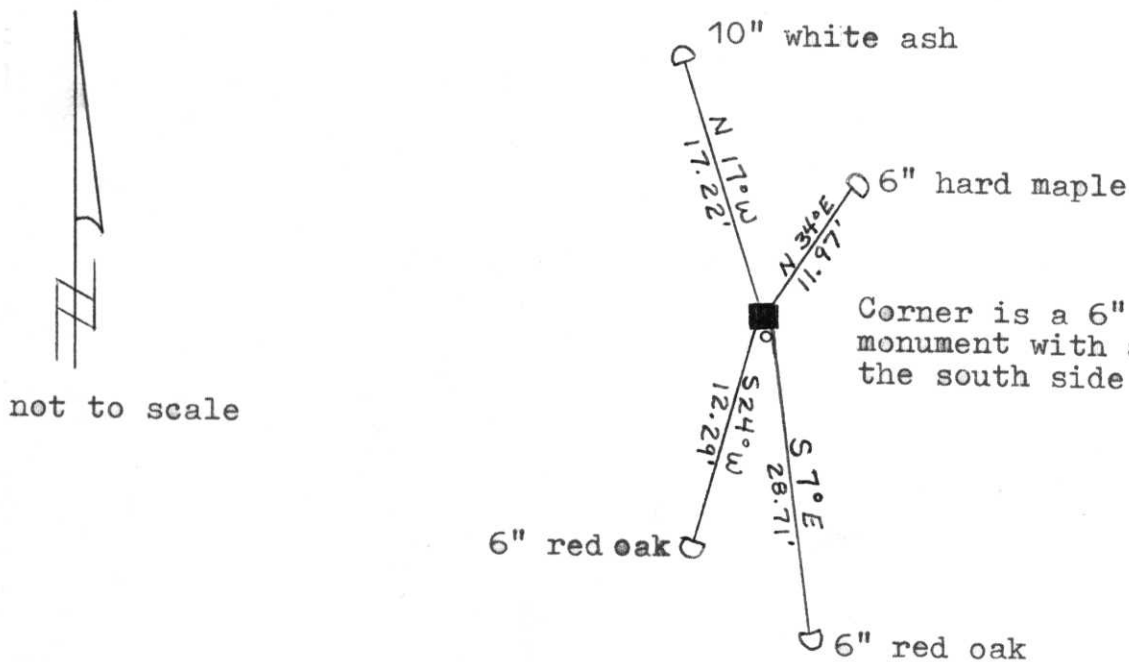
County Lincoln



Section 16

(b) (f) (g) (h) Description of monument found at this corner and if it was accepted, state all evidence (material, testimonial, occupational, plats, records, other monuments) used as a basis for accepting. If not accepted or if nothing was found, state evidence used as basis for establishing location. If reestablished through lost corner proportionate methods, indicate all monuments, distances and directions used to establish. Original Gov't. Survey: 1854 by Jackson Prentice, set wood post for corner with bearings, maple 20 S 5° W 22 links and hemlock 10 N 24° W 12 links. In a 1937 survey by Francis Fox, he set a 6" x 6" red granite monument for the corner, witnessed by 22" hemlock, N 5° W, 16.0 lks & 20" hemlock, S 33° E, 27.4 lks. I found the granite but both of his witnesses are gone. Made new witnesses as shown below.

(c) (d) (e) Plan view of corner with ties to at least 4 witness monuments. If in disagreement with previously established corner, show the distances between the two corners and also indicate the ties to the disputed corner.



not to scale

(i) I, Lester J. Schmit R.L.S. 1192

(type or print name) certify that the corner location on this record was determined by me or under my direction and control and that this U.S. Public Land Survey Monument Record is correct and complete to the best of my knowledge and belief.

Lester J. Schmit 7 May 92  
Signature Date



Index No. I-21