

Attachment to Tie Sheet E-15, T34N, R8E

43408030020

I visited the corner on 4/16/2019, to verify the corner and reference tie monumentation. I found the Granite Monument, up 18" and leaning Northerly (ground was too frozen to plumb the monument), and all 4 iron ties from Lester Schmit's tie sheet (4/09/2002). There is a Wood Post 1.5' East and a Vinyl Post 2' North of the monument. The established Coordinates and all 4 iron ties agree with the base of existing monument.

Anthony R. Dallman 8/14/19

Anthony R. Dallman, PLS-2405

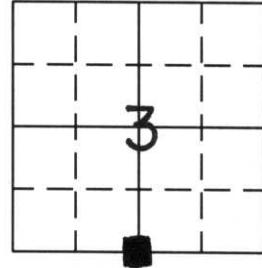
Lincoln County Surveyor



U.S. PUBLIC LAND SURVEY MONUMENT RECORD

Note: This form is intended and designed to fulfill all requirements of Wisconsin Administrative Code, Chapter A-E 7.08, U.S. Public Land Survey Monument Record (3) (a) (b) (c) (d) (e) (f) (g) (h) (i). An additional sheet may be added if necessary to conform with said requirements.

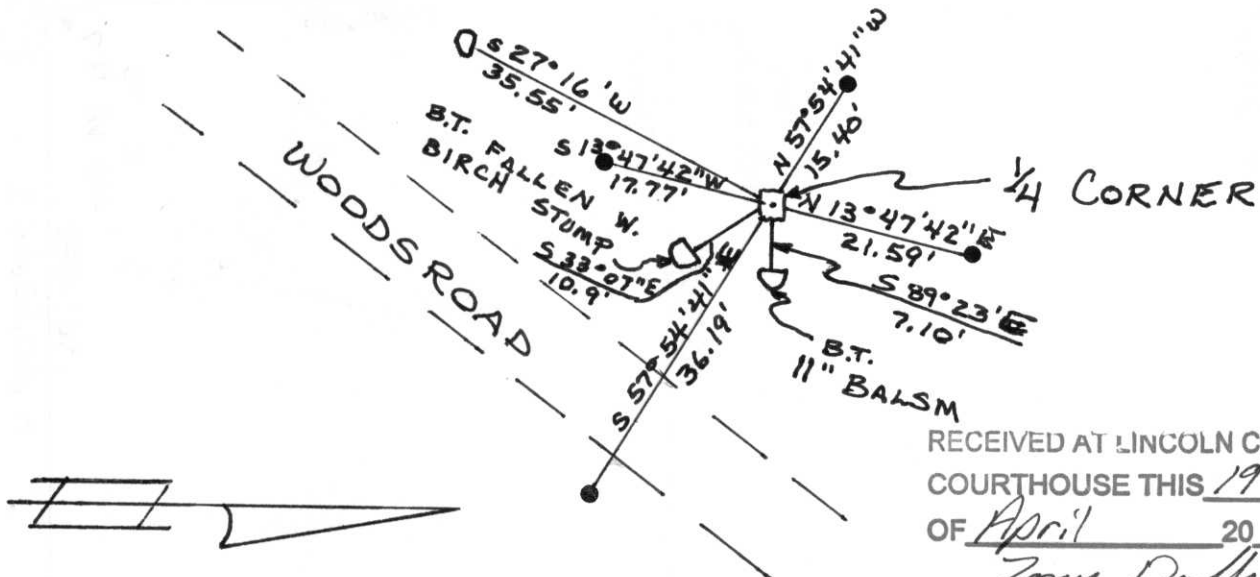
(a) Corner location: Township 34 North
 Range 8 East
 Town/~~City/Village~~ Harrison
 County Lincoln



(b) (f) (g) (h) Description of monument found at this corner and if it was accepted, state all evidence (material, testimonial, occupational, plats, records, other monuments) used as a basis for accepting. If not accepted or if nothing was found, state evidence used as basis for establishing location. If reestablished through lost corner proportionate methods, indicate all monuments, distances and directions used to establish.

Original Gov't. Survey: 1854 by Jackson Prentice, set wood post for corner with bearings, hemlock 12 S 21° E 15 links and hemlock 9 N 15° W 20 links. In a 1937 survey by Francis Fox, set stone at edge of swamp to replace old post and witnessed by norway pine 12" S 50° W 46.06 links and maple 3 1/2" N 31° E 65.4 links. I found the red granite witnessed with the 3 B.T.s as shown below. Set new witnesses as shown below.

(c) (d) (e) Plan view of corner with ties to at least 4 witness monuments. If in disagreement with previously established corner, show the distance between the two corners and also indicate the ties to the disputed corner.



RECEIVED AT LINCOLN COUNTY
 COURTHOUSE THIS 19TH DAY
 OF April 20 02
Tony Dalen
 LAND INFORMATION OFFICE

(i) I, Lester J. Schmit R.L.S. S-1192
 (type or print name) certify that the corner location on this record was determined by me or under my direction and control and that this U.S. Public Land Survey Monument Record is correct and complete to the best of my knowledge and belief.

Lester J. Schmit
 Signature

9 Apr 02
 Date

Index No. E-15
 the back

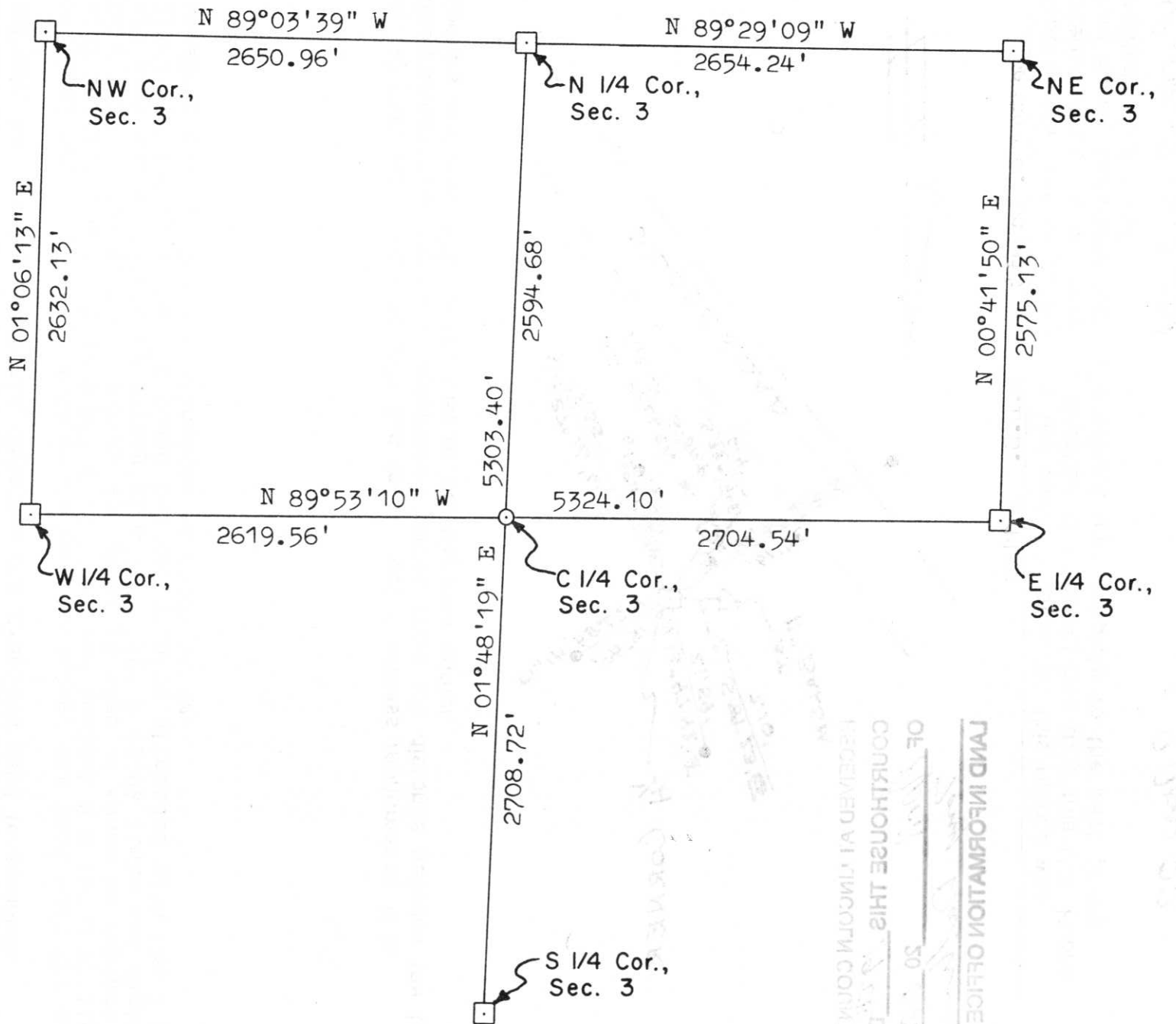


SCALE 1" = 800'

6" x 6" red granite

2" iron pipe

T. 34 N., R. 8 E.



LAND INFORMATION OFFICE
RECEIVED AT LINCOLN COUNTY
COURTHOUSE THIS _____ DAY
OF _____ 20____

11-27-11