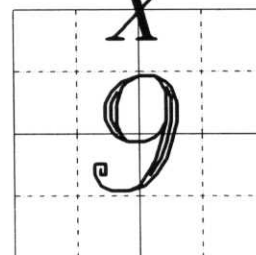


U.S. PUBLIC LAND SURVEY MONUMENT RECORD

NOTE: THIS FORM IS INTENDED AND DESIGNED TO FULFILL ALL REQUIREMENTS OF WISCONSIN ADMINISTRATIVE CODE, CHAPTER A-E 7.08 U.S. PUBLIC LAND SURVEY MONUMENT RECORD (3) (a) (b) (c) (d) (e) (f) (g) (h) (i). AN ADDITIONAL SHEET MAY BE ADDED IF NECESSARY TO CONFORM WITH SAID REQUIREMENTS.

(a) CORNER LOCATION: TOWNSHIP 34 N NORTH
 RANGE 8 E EAST/WEST
 TOWN/CITY/VILLAGE HARRISON
 COUNTY LINCOLN



SECTION 9

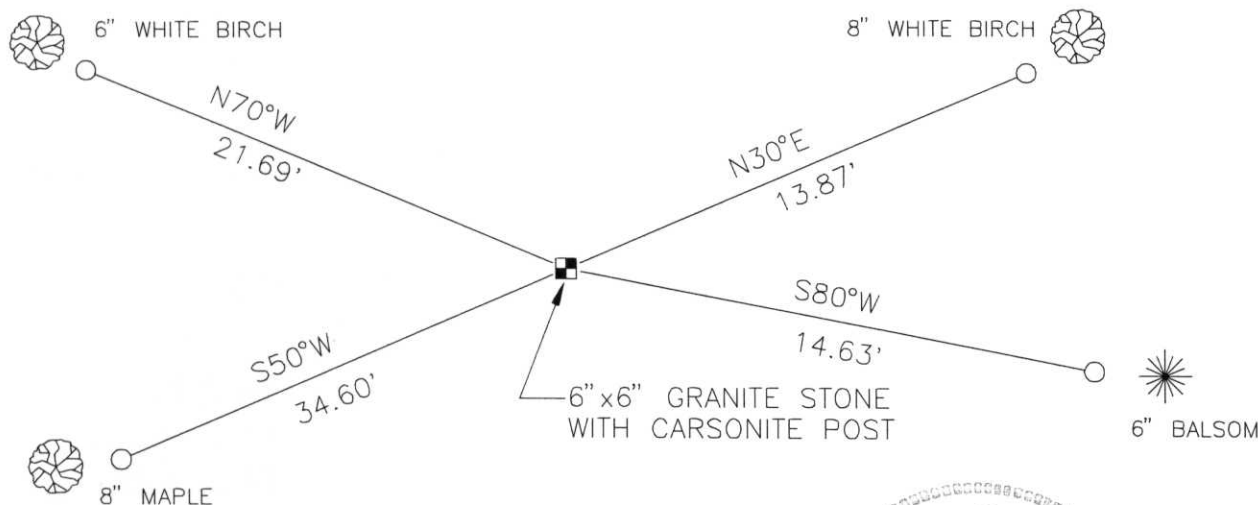
(b) (f) (g) (h) DESCRIPTION OF MONUMENT FOUND AT THIS CORNER AND IF IT WAS ACCEPTED, STATE ALL EVIDENCE (MATERIAL, TESTIMONIAL, OCCUPATIONAL, PLATS, RECORDS, OTHER MONUMENTS) USED AS BASIS FOR ACCEPTING. IF NOT ACCEPTED OR IF NOTHING WAS FOUND, STATE EVIDENCE USED AS BASIS FOR ESTABLISHING LOCATION. IF REESTABLISHED THROUGH LOST CORNER PROPORTIONATE METHODS, INDICATE ALL MONUMENTS, DISTANCES AND DIRECTIONS USED TO ESTABLISH. INDICATE TYPE OF MONUMENT FOUND OR SET AND SIGN POST.

ORIGINAL SURVEY, CIRCA 1854 BY JACKSON PRENTICE. IN 1937, FRANCIS FOX SET A 6" x 6" GRANITE STONE HERE.

WALKED INTO WOODS, USING TOPO MAP, FOUND SOME CALLS FROM FOX NOTES, LOCATED GENERAL AREA, AFTER EXTENSIVE SEARCH, FOUND 6" x 6" GRANITE STONE, WITH DRILL HOLE, 6" ABOVE SURFACE, ON STEEP HILL, WITH ROCKS AROUND IT. PUT OUT TIES, SET CARSONITE SIGN BY MONUMENT.

(c) (d) (e) PLAN VIEW OF CORNER WITH TIES TO AT LEAST 4 WITNESS MONUMENTS. IF IN DISAGREEMENT WITH PREVIOUSLY ESTABLISHED CORNER, SHOW THE DISTANCES BETWEEN THE TWO CORNERS AND ALSO INDICATE THE TIES TO THE DISPUTED CORNER.

ALL WITNESS CORNERS ARE 3/4" IRON BAR WITH ALUMINUM CAP.



(i) I, DAVID L. OSTERBRINK RLS
 (TYPE OR PRINT NAME) CERTIFY THAT THE CORNER LOCATION ON THIS RECORD WAS DETERMINED BY ME OR UNDER MY DIRECTION AND CONTROL AND THAT THIS U.S. PUBLIC LAND SURVEY MONUMENT RECORD IS CORRECT AND COMPLETE TO THE BEST OF MY KNOWLEDGE AND BELIEF.

David L. Osterbrink 10-7-96
 SIGNATURE DATE



STAMP

INDEX NO. E-11