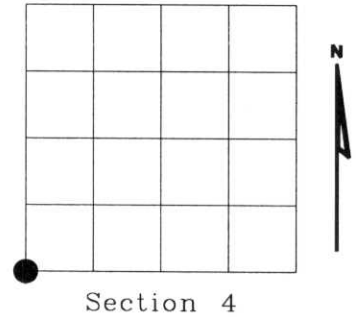


# U.S. PUBLIC LAND SURVEY MONUMENT RECORD

NOTE: This form is intended and designed to fulfill all requirements of Wisconsin Administrative Code, Chapter A-E 7.08 U.S. Public Land Survey Monument Record (3)(a)(b)(c)(d)(e)(f)(g)(h)(i). An additional sheet may be added if necessary to conform with said requirements.

(a) Corner location: Township 34 North  
 Range 08 East  
 Town of HARRISON  
 LINCOLN County, Wisconsin



(b)(f)(g)(h) Description of monument found at this corner and if it was accepted, state all evidence (material, testimonial, occupational, plats, records, other monuments) used as a basis for accepting. If not accepted or if nothing was found, state evidence used as basis for establishing location. If reestablished through lost corner proportionate methods, indicate all monuments, distances and directions used to establish. Indicate type of monument found or set and sign post.

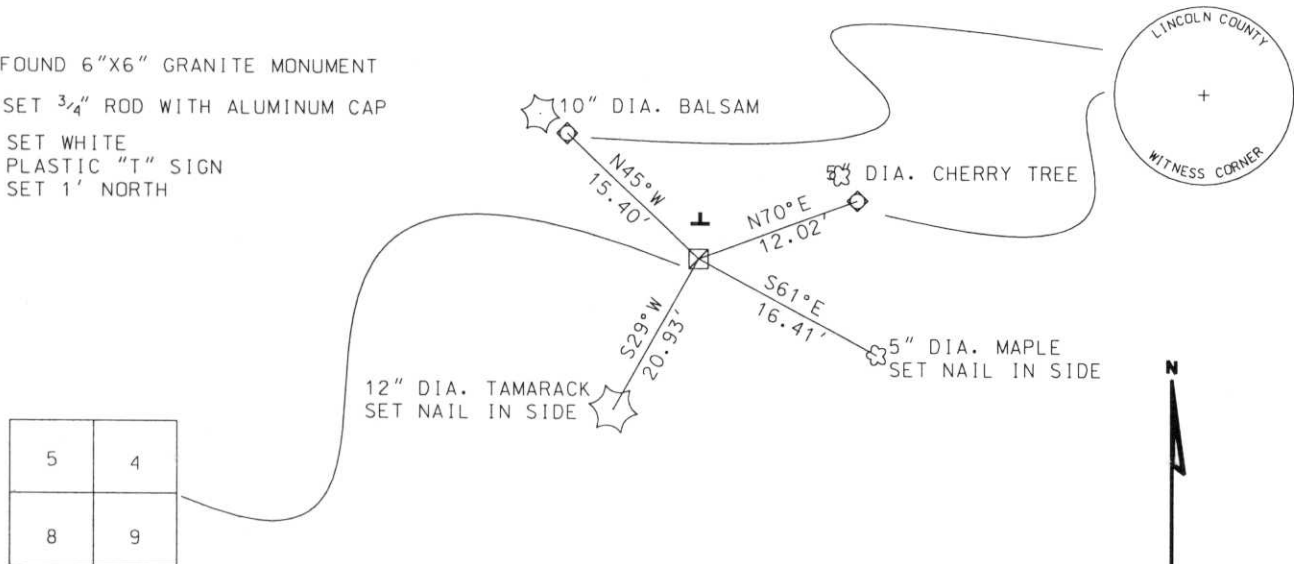
- 1854 - Original corner set by Jackson L. Prentice.
- 1938 - Frances Fuchs set 6"x6" granite stone in rock mound at intersection of old blaze lines 10' north of swamp at foot of hill.  
 BTs : 7" W. Pine S65°E, 74.4 Lks.  
 14" Maple S61°W, 62.4 Lks.  
 11" Hemlock N66°E, 40.0 Lks.
- 2002 - I found 6"x6" granite stone in rock mound at foot of hill 10' north of swamp.  
 BTs found: 14" W. Pine S65°E, 49.1' (Fuchs)  
 16" Maple stump S61°W, 41.18' (Fuchs)  
 Rotten Hemlock stump N66°E, 26.4' (Fuchs)

Witness corner as shown below.

RECEIVED AT LINCOLN COUNTY  
 COURTHOUSE THIS 2<sup>ND</sup> DAY  
 OF December 20 02  
*Tony Dab...*  
 LAND INFORMATION OFFICE

(c)(d)(e) Plan view of corner with ties to at least 4 witness monuments. If in disagreement with previously established corner, show the distances between the two corners and also indicate the ties to the disputed corner.

- FOUND 6"x6" GRANITE MONUMENT
- SET 3/4" ROD WITH ALUMINUM CAP
- SET WHITE
- PLASTIC "T" SIGN
- SET 1' NORTH



(i) I, Dennis B. Roberts, Registered Land Surveyor \*S-1863, hereby certify that the corner location on this record was determined by me or under my direction and control and that this U.S. Public Land Survey Monument Record is correct and complete to the best of my knowledge and belief.

*Dennis B. Roberts*  
 Signature  
 11-13-02  
 Date



Index No. E-9