

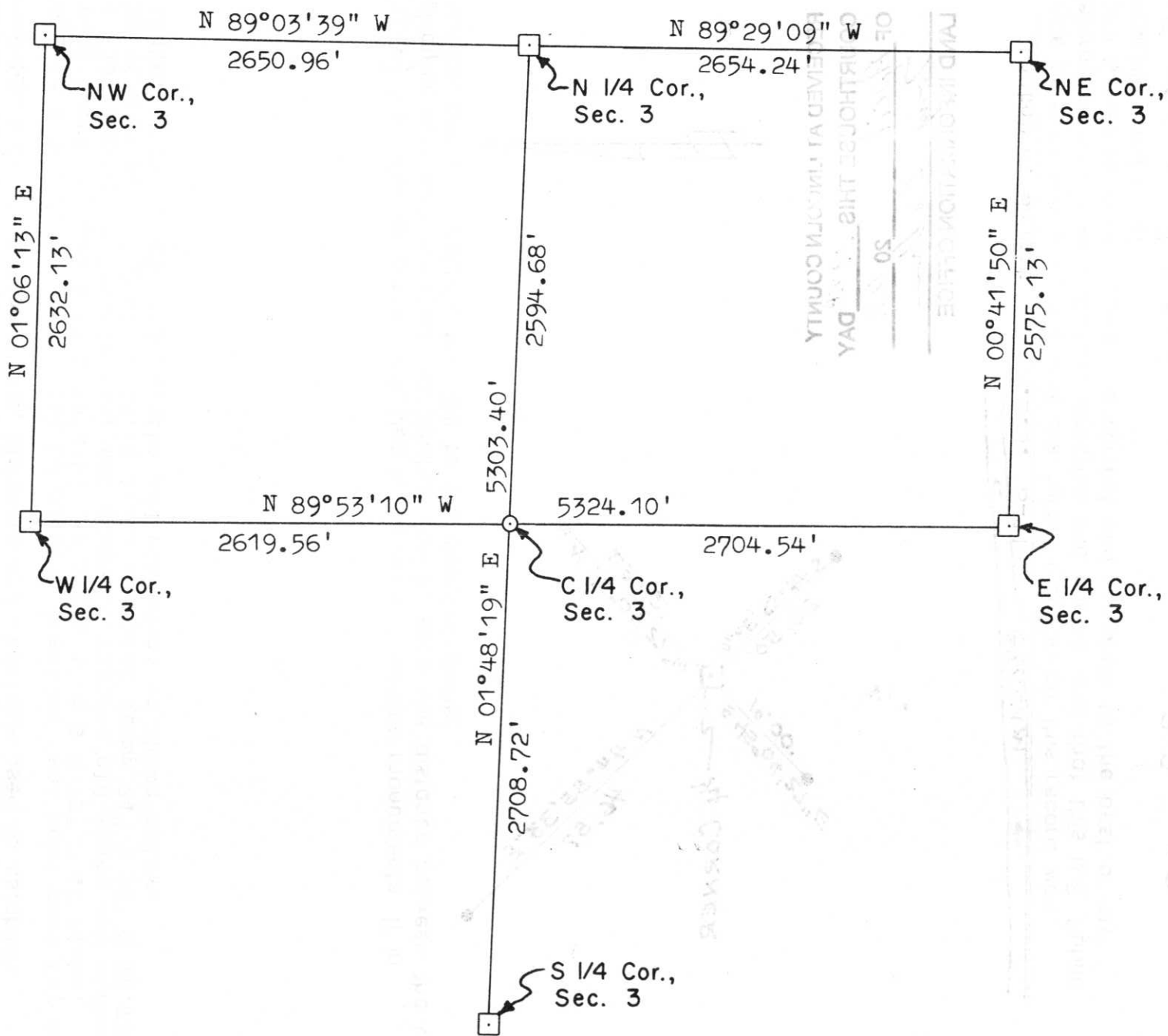


SCALE 1" = 800'

6" x 6" red granite

2" iron pipe

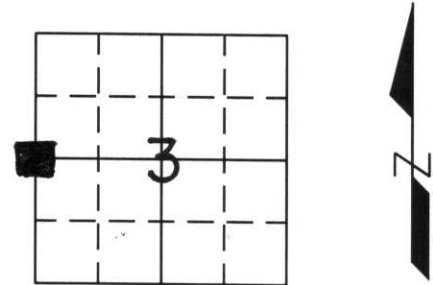
T. 34 N., R. 8 E.



# U.S. PUBLIC LAND SURVEY MONUMENT RECORD

Note: This form is intended and designed to fulfill all requirements of Wisconsin Administrative Code, Chapter A-E 7.08, U.S. Public Land Survey Monument Record (3) (a) (b) (c) (d) (e) (f) (g) (h) (i). An additional sheet may be added if necessary to conform with said requirements.

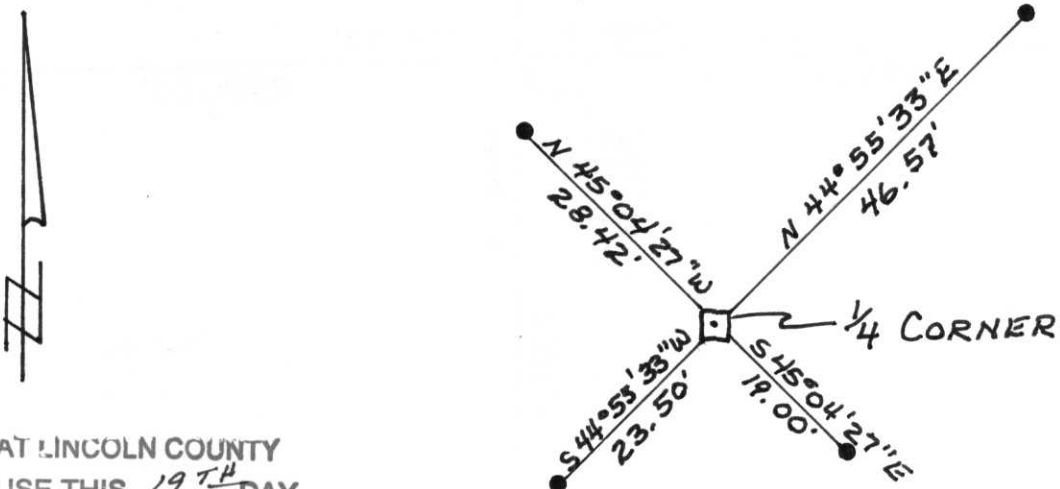
(a) Corner location: Township 34 North  
 Range 8 East  
 Town/~~City/Village~~ Harrison  
 County Lincoln



(b) (f) (g) (h) Description of monument found at this corner and if it was accepted, state all evidence (material, testimonial, occupational, plats, records, other monuments) used as a basis for accepting. If not accepted or if nothing was found, state evidence used as basis for establishing location. If reestablished through lost corner proportionate methods, indicate all monuments, distances and directions used to establish.

Original Gov't. Survey: 1854 by Jackson Prentice, set wood post for corner with bearings, birch 10 S 70°E 59 links and pine 9 N 72° W 45 links. In a 1937 survey by Francis Fox, set stone to replace old stake and witnessed by pine stump 24" S 82° W 23.18 links and pine stump 24" N 36° E 22.72 links. I found the red granite and witnessed as shown below.

(c) (d) (e) Plan view of corner with ties to at least 4 witness monuments. If in disagreement with previously established corner, show the distance between the two corners and also indicate the ties to the disputed corner.



RECEIVED AT LINCOLN COUNTY  
 COURTHOUSE THIS 19<sup>TH</sup> DAY  
 OF April 20 02  
Tony Dalbo  
 LAND INFORMATION OFFICE

(i) I, Lester J. Schmit R.L.S. S-1192 STREAM  
 (type or print name) certify that the corner location on this record was determined by me or under my direction and control and that this U.S. Public Land Survey Monument Record is correct and complete to the best of my knowledge and belief.

Lester J. Schmit  
 Signature 9 Apr 02  
 Date

Index No. C-13