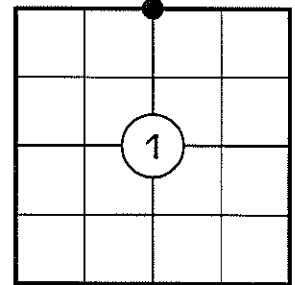


U.S. PUBLIC LAND SURVEY MONUMENT RECORD

NOTE: THIS FORM IS INTENDED AND DESIGNED TO FULFILL ALL REQUIREMENTS OF WISCONSIN ADMINISTRATIVE CODE CHAPTER A-E 7.08 U.S. PUBLIC LAND SURVEY MONUMENT RECORD (3) (a)(b)(c)(d)(e)(f)(g)(h)(i). AN ADDITIONAL SHEET MAY BE ADDED IF NECESSARY TO CONFIRM WITH SAID REQUIREMENTS.

(a) CORNER LOCATION:

N1/4 CORNER OF SECTION 1
 TOWNSHIP 33 NORTH
 RANGE 5 EAST
 TOWN OF HARDING
 COUNTY OF LINCOLN



(b) HISTORY OF ORIGINAL CORNER:

ORIGINAL SURVEYOR: J. M. MARSH
 DATE OF SURVEY: JULY - AUGUST, 1851

ORIGINAL BEARING TREES: 10" BIRCH - S09°W, 44 LKS
 12" BIRCH - S80°W, 12 LKS
 13" BLACK ASH - N30°E, 20 LKS

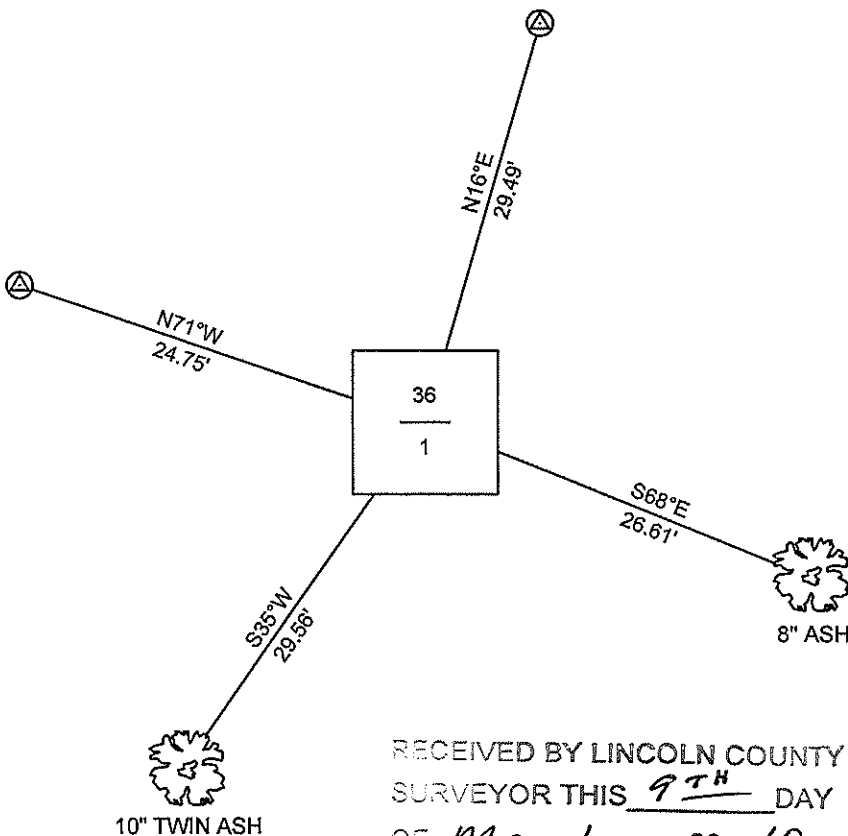
(f)(g)(h) DESCRIPTION OF MONUMENT FOUND AT THIS CORNER AND IF IT WAS ACCEPTED STATE ALL EVIDENCE (MATERIAL, TESTIMONIAL, OCCUPATIONAL, PLATS, RECORDS, OTHER MONUMENTS) USED AS A BASIS FOR ESTABLISHING LOCATION. IF REESTABLISHING THROUGH LOST CORNER PROPORTIONATE METHODS, INDICATE ALL MONUMENTS, DISTANCES, AND DIRECTIONS USED TO ESTABLISH. INDICATE TYPE OF MONUMENT AND SIGN POST FOUND OR SET.

1851: J. M. MARSH SET THE ORIGINAL 1/4 SECTION POST.

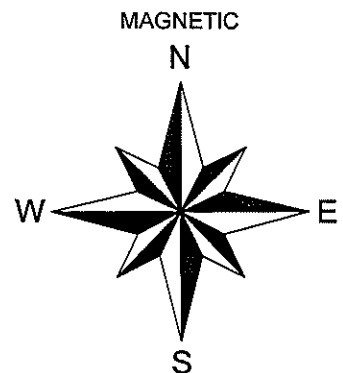
1930'S: FRANCIS FOX SET A STONE MONUMENT MOUNDED WITH STONE IN PLACE OF AN OLD STAKE WITH A BLAZE LINE RUNNING TO IT. HE NOTES A 22" CEDAR STUB S89°E, 36.6'.

02/17/2010: I FOUND A 6" SQUARE GRANITE MONUMENT LEANING NORTH IN A ROCK CAIRN WITH A 1" DIA. IRON PIPE SET ALONG THE SOUTH SIDE. I PLUMBED THE MONUMENT, SET A PLASTIC POST 1' SOUTH OF THE MONUMENT, MADE TWO BEARING TREES AND SET TWO 3/4" DIA. CAPPED REBAR REFERENCE MONUMENTS AS SHOWN BELOW.

(c)(d)(e) PLAN VIEW OF CORNER WITH TIES TO AT LEAST FOUR WITNESSES. IF IN DISAGREEMENT WITH PREVIOUSLY ESTABLISHED CORNER, SHOW THE DISTANCES BETWEEN THE TWO CORNERS AND ALSO INDICATE THE TIE TO THE DISPUTED CORNER.

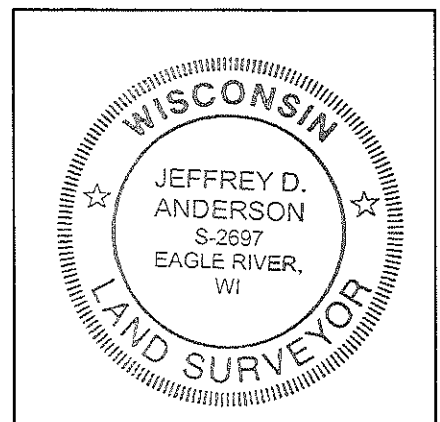


⊠ 3/4" DIA. CAPPED REBAR SET



NOT TO SCALE
 DISTANCES TO BT'S ARE TO NAIL IN SIDE

RECEIVED BY LINCOLN COUNTY
 SURVEYOR THIS 9TH DAY
 OF March 20 10
Tom Dahl
 COUNTY SURVEYOR



INDEX NO. A-23

I JEFFREY D. ANDERSON, REGISTERED LAND SURVEYOR NO. 2697, HEREBY CERTIFY THAT THE CORNER LOCATION ON THIS RECORD WAS REFERENCED BY ME OR UNDER MY DIRECTION AND CONTROL AND THAT THIS U.S. PUBLIC LAND SURVEY MONUMENT RECORD IS COMPLETE TO THE BEST OF MY KNOWLEDGE AND BELIEF.

Jeffrey D. Anderson 2/24/10
 SIGNATURE

NORTH ¼ CORNER, SECTION 1 – 6" SQUARE GRANITE STONE FOUND



FACING NORTH



FACING SOUTH



FACING EAST



FACING WEST

