

U.S. PUBLIC LAND SURVEY MONUMENT RECORD

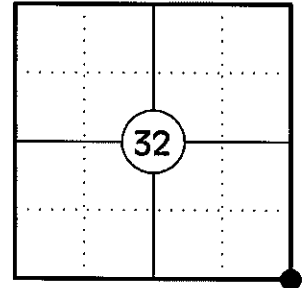
NOTE: THIS FORM IS INTENDED AND DESIGNED TO FULFILL ALL REQUIREMENTS OF WISCONSIN ADMINISTRATIVE CODE CHAPTER A-E 7.08 U.S. PUBLIC LAND SURVEY MONUMENT RECORD (3) (a)(b)(c)(d)(e)(f)(g)(h)(i). AN ADDITIONAL SHEET MAY BE ADDED IF NECESSARY TO CONFIRM WITH SAID REQUIREMENTS.

(a) CORNER LOCATION:

SOUTHEAST CORNER OF SECTION 32
 TOWNSHIP 34 NORTH
 RANGE 5 EAST
 TOWN OF TOMAHAWK
 COUNTY OF LINCOLN

LINCOLN COUNTY COORDINATES:

N: 195816.79
 E: 343875.66



(b) HISTORY OF ORIGINAL CORNER:

ORIGINAL SURVEYOR: JAMES M. MARSH
 DATE OF SURVEY: AUG. 1851

ORIGINAL BEARING TREES: 10" BLACK ASH - S65°E, 18 LKS
 8" BLACK ASH - S73°W, 34 LKS
 8" BLACK ASH - N81°W, 19 LKS
 6" BLACK ASH - N68°E, 32 LKS

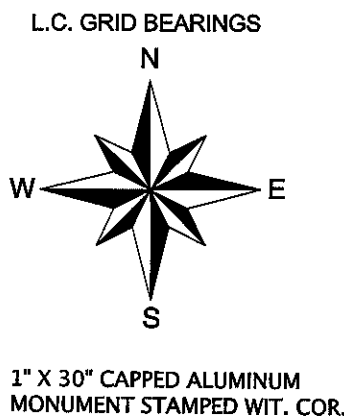
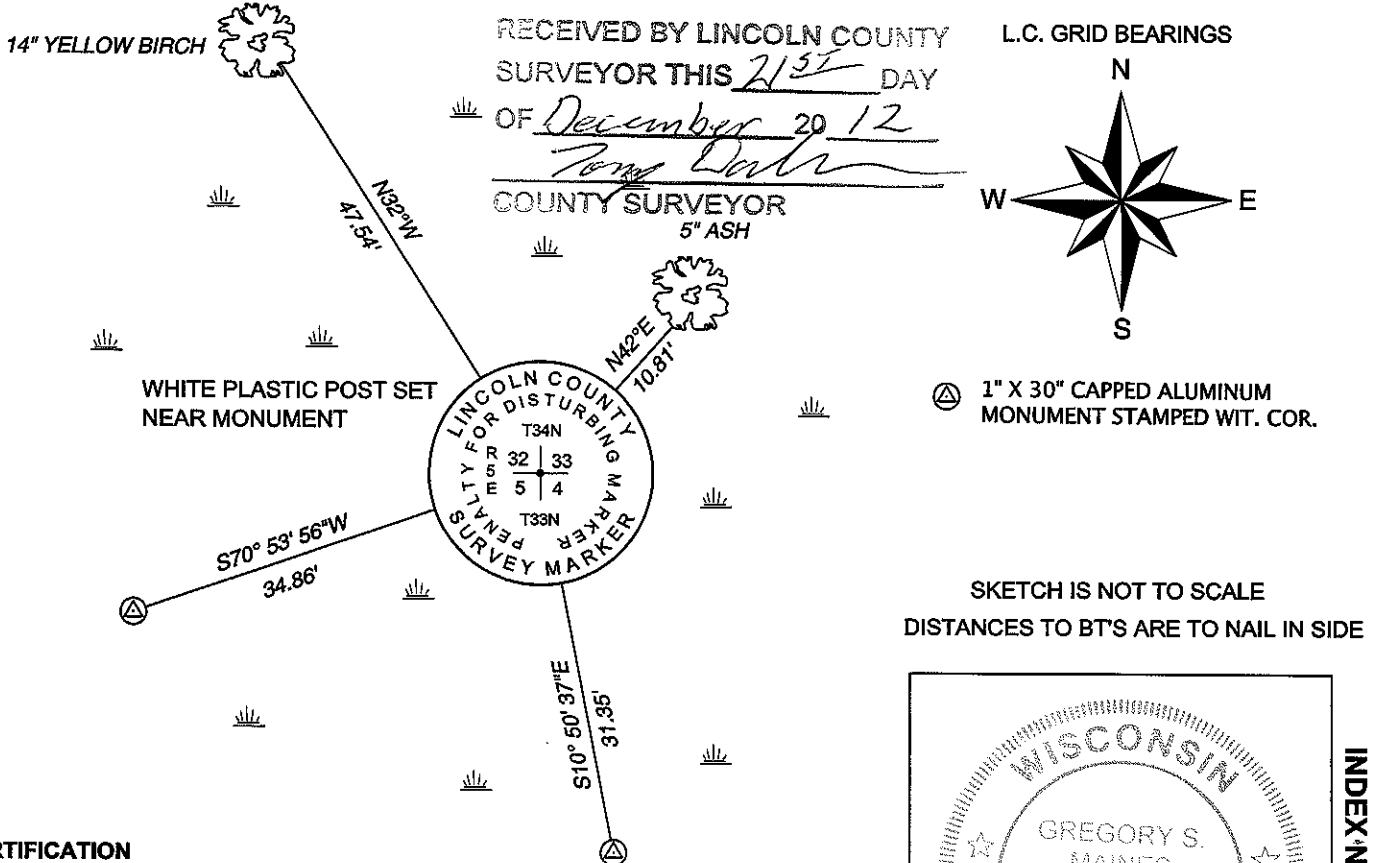
(f)(g)(h) DESCRIPTION OF MONUMENT FOUND AT THIS CORNER AND IF IT WAS ACCEPTED STATE ALL EVIDENCE (MATERIAL, TESTIMONIAL, OCCUPATIONAL, PLATS, RECORDS, OTHER MONUMENTS) USED AS A BASIS FOR ESTABLISHING LOCATION. IF REESTABLISHING THROUGH LOST CORNER PROPORTIONATE METHODS, INDICATE ALL MONUMENTS, DISTANCES, AND DIRECTIONS USED TO ESTABLISH. INDICATE TYPE OF MONUMENT AND SIGN POST FOUND OR SET.

1851: JAMES M. MARSH SET THE ORIGINAL SECTION CORNER POST.

1930'S: FRANCIS FOX SET CEDAR STAKE AT INTERSECTION OF OLD BLAZE LINES FOR CORNER LOCATION. HE NOTES IT WAS TOO WET FOR STONE AND THERE WAS NOTHING TO WITNESS.

11/28/2012: I FOUND NO EVIDENCE OF THE CEDAR STAKE SET BY FRANCIS FOX. TO REESTABLISH THE POSITION OF THE CORNER AS SHOWN BY FRANCIS FOX I DOUBLED OVER THE SOUTH LINE OF THE SE 1/4 OF SECTION 33 WHICH WERE 2 GRANITE MONUMENTS BY FOX AND THE SOUTH LINE OF THE SW 1/4 OF SECTION 32 WHICH WERE 2 GRANITE MONUMENTS BY FOX. THIS RESULTED IN TWO POSITIONS 1.51 FEET APART. I AVERAGED THE TWO POSITIONS AND SET A LINCOLN COUNTY BERNTSEN DRIVEABLE MONUMENT FOR THE CORNER. I MADE TWO BEARING TREES AND SET TWO REFERENCE MONUMENTS TO WITNESS THE CORNER.

(c)(d)(e) PLAN VIEW OF CORNER WITH TIES TO AT LEAST FOUR WITNESSES. IF IN DISAGREEMENT WITH PREVIOUSLY ESTABLISHED CORNER, SHOW THE DISTANCES BETWEEN THE TWO CORNERS AND ALSO INDICATE THE TIE TO THE DISPUTED CORNER.

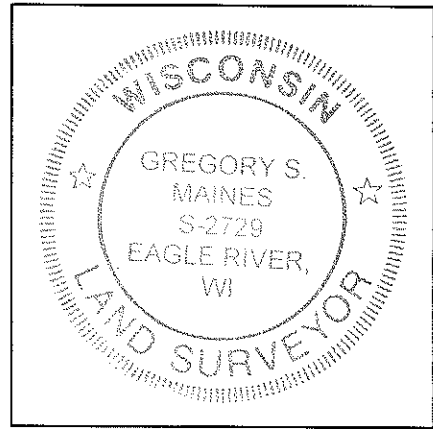


SKETCH IS NOT TO SCALE
 DISTANCES TO BT'S ARE TO NAIL IN SIDE

CERTIFICATION

I GREGORY S. MAINES, REGISTERED LAND SURVEYOR NO. 2729, HEREBY CERTIFY THAT THE CORNER LOCATION ON THIS RECORD WAS REFERENCED BY ME OR UNDER MY DIRECTION AND CONTROL AND THAT THIS U.S. PUBLIC LAND SURVEY MONUMENT RECORD IS COMPLETE TO THE BEST OF MY KNOWLEDGE AND BELIEF.

Gregory S. Maines
 SIGNATURE



INDEX NO. 1-9