

U.S. PUBLIC LAND SURVEY MONUMENT RECORD

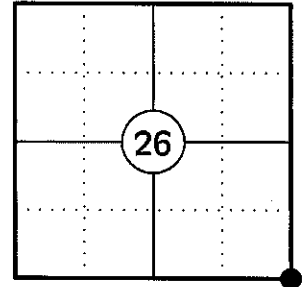
NOTE: THIS FORM IS INTENDED AND DESIGNED TO FULFILL ALL REQUIREMENTS OF WISCONSIN ADMINISTRATIVE CODE CHAPTER A-E 7.08 U.S. PUBLIC LAND SURVEY MONUMENT RECORD (3) (a)(b)(c)(d)(e)(f)(g)(h)(i). AN ADDITIONAL SHEET MAY BE ADDED IF NECESSARY TO CONFIRM WITH SAID REQUIREMENTS.

(a) CORNER LOCATION:

SOUTHEAST CORNER OF SECTION 26
 TOWNSHIP 34 NORTH
 RANGE 5 EAST
 TOWN OF TOMAHAWK
 COUNTY OF LINCOLN

LINCOLN COUNTY COORDINATES:

N: 201035.24
 E: 359685.43



(b) HISTORY OF ORIGINAL CORNER:

ORIGINAL SURVEYOR: JACKSON L. PRENTICE
 DATE OF SURVEY: JULY 1855

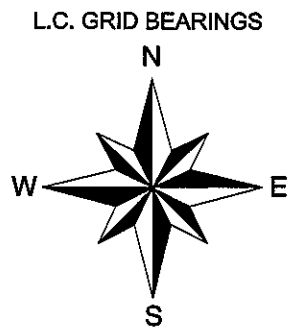
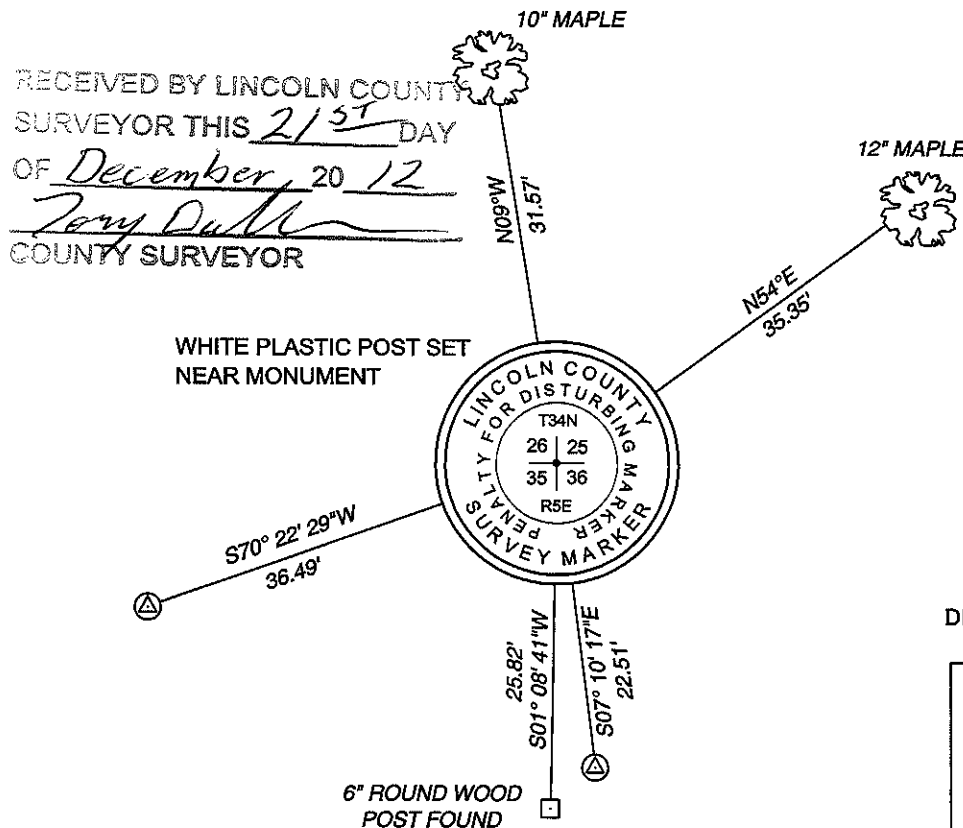
ORIGINAL BEARING TREES: 8" ELM - S36°E, 33 LKS
 7" BIRCH - S10°W, 12 LKS
 10" BIRCH - N48°W, 14 LKS
 14" ASPEN - N55°E, 60 LKS

(f)(g)(h) DESCRIPTION OF MONUMENT FOUND AT THIS CORNER AND IF IT WAS ACCEPTED STATE ALL EVIDENCE (MATERIAL, TESTIMONIAL, OCCUPATIONAL, PLATS, RECORDS, OTHER MONUMENTS) USED AS A BASIS FOR ESTABLISHING LOCATION. IF REESTABLISHING THROUGH LOST CORNER PROPORTIONATE METHODS, INDICATE ALL MONUMENTS, DISTANCES, AND DIRECTIONS USED TO ESTABLISH. INDICATE TYPE OF MONUMENT AND SIGN POST FOUND OR SET.

1855: JACKSON L. PRENTICE SET THE ORIGINAL SECTION CORNER POST.

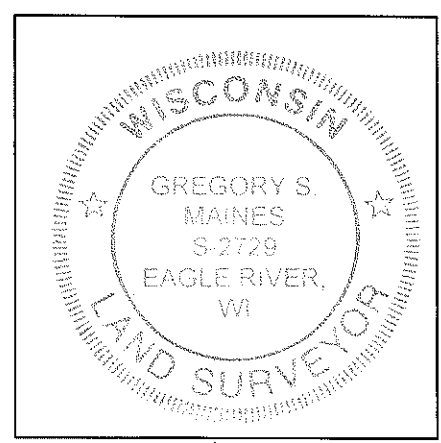
12/04/2012: I FOUND A WOOD POST NEAR THE CORNER POSITION. THE COUNTY SURVEYOR SAID THAT THE WOOD POST WAS SET BY THE LINCOLN COUNTY FORESTRY DEPARTMENT INCORRECTLY. I POSITIONED THE CORNER BY DOUBLE PROPORTION USING THE SE CORNER OF SECTION 35 TO THE SOUTH, THE SE CORNER OF SECTION 14 TO THE NORTH, THE SE CORNER OF SECTION 27 TO THE WEST AND THE SE CORNER OF SECTION 25 TO THE EAST AND SET A LINCOLN COUNTY BERNTSEN BREAKAWAY MONUMENT. I MADE TWO BEARING TREES AND SET TWO REFERENCE MONUMENTS TO WITNESS THE CORNER.

(c)(d)(e) PLAN VIEW OF CORNER WITH TIES TO AT LEAST FOUR WITNESSES. IF IN DISAGREEMENT WITH PREVIOUSLY ESTABLISHED CORNER, SHOW THE DISTANCES BETWEEN THE TWO CORNERS AND ALSO INDICATE THE TIE TO THE DISPUTED CORNER.



SKETCH IS NOT TO SCALE
 DISTANCES TO BT'S ARE TO NAIL IN SIDE

CERTIFICATION
 I GREGORY S. MAINES, REGISTERED LAND SURVEYOR NO. 2729, HEREBY CERTIFY THAT THE CORNER LOCATION ON THIS RECORD WAS REFERENCED BY ME OR UNDER MY DIRECTION AND CONTROL AND THAT THIS U.S. PUBLIC LAND SURVEY MONUMENT RECORD IS COMPLETE TO THE BEST OF MY KNOWLEDGE AND BELIEF.
Gregory S. Maines
 SIGNATURE



INDEX NO. 4-21