

Attachment to Tie Sheet Q-23, T34N, R5E

43405240020

I visited the corner on 3/01/2019 to verify the corner and reference tie monumentation. I found the Berntsen Swamp Rod, up 1", and 4 of 6 ties from David Tlusty's tie sheet (04/27/2005), deep snow made it difficult to search for 2 of the aluminum nail references. The established Coordinates and 2 of the 4 ties agree with existing monument.

Northerly witness(Berntsen Swamp Rod) measures 75.55', shown as 70.91' on Tie Sheet.

Northwesterly witness measures 4.55', shown as 3.83' on Tie Sheet.

 4/03/19

Anthony R. Dallman, PLS-2405

Lincoln County Surveyor



LINCOLN COUNTY U.S. PUBLIC LAND CORNER RESTORATION

The Quarter corner common to Sections 24 & 25, T. 34 N., R. 5 EW.

434053 0020

Corner was: (check all that apply)

- Restored through acceptance of an obliterated evidence location.
- Restored through acceptance of a found perpetuated location.
- Determined to be lost and re-established through proportionate methods.
 (Show bearings and distances to PLSS corners used for proportioning, and show original distances).
- Restored/recovered/re-established in a location that differs from a previously established position.
 (Show difference in plan view below).
- Check here if addition information is shown on the reverse side of this form.

Describe record evidence, recovered physical evidence, occupational evidence, testimonial evidence and all other evidence considered in the recovery/restoration of the corner.

The original corner was established in 1855 by Jackson L. Prentice. Original bearing trees: spruce, 8", N 38 E, 8 links and a spruce, 8" S 53° W, 25 links. Tony Dallman, Lincoln County Surveyor recently determined this corner was lost. I re-established this corner by single proportionate measurement between the SW and SE corners of Section 24 as shown below. Corner witnessed by adjoining landowner, David Seidler.

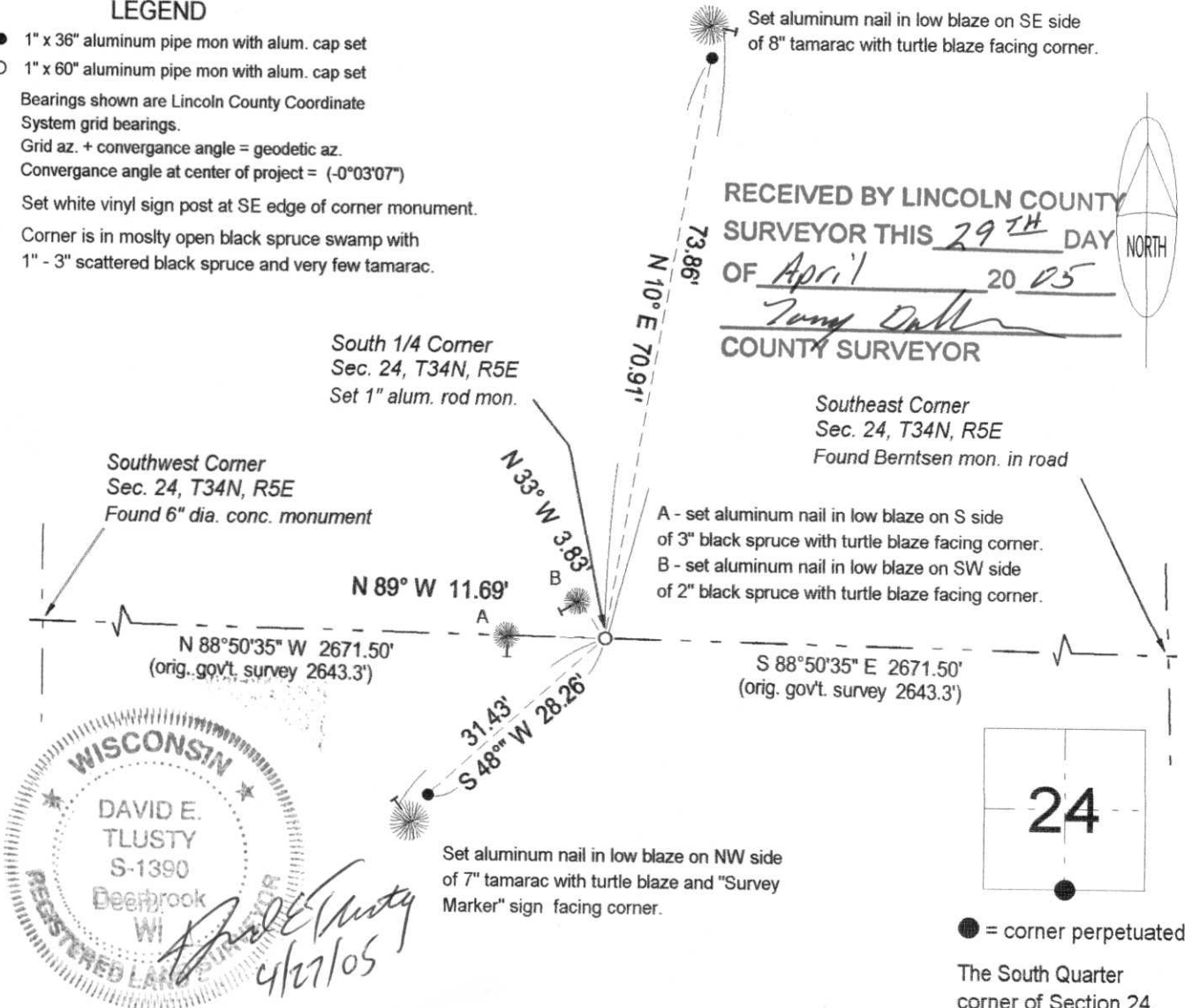
Physical description of the monument set:

For the corner, I set a 1" x 60" aluminum pipe monument with barbed point and aluminum cap, top of which is 0.6' above the swamp. Set a white vinyl sign post on the SE edge of the monument.

Describe the accessories used to perpetuate the corner. Include a plan view drawing and accessories found/set. Describe measuring point on bearing trees. Show any topographic features that would aid in future recovery of the corner.

LEGEND

- 1" x 36" aluminum pipe mon with alum. cap set
 - 1" x 60" aluminum pipe mon with alum. cap set
- Bearings shown are Lincoln County Coordinate System grid bearings.
 Grid az. + convergence angle = geodetic az.
 Convergence angle at center of project = (-0°03'07")
 Set white vinyl sign post at SE edge of corner monument.
 Corner is in mostly open black spruce swamp with 1" - 3" scattered black spruce and very few tamarac.



WISCONSIN
 DAVID E. TLUSTY
 S-1390
 Deerbrook WI
 REGISTERED LAND SURVEYOR

David E. Tlusty
 4/27/05

I, David E. Tlusty, Wisconsin Registered Land Surveyor s-1390, certify that the corner location on this record was determined by me and that this U.S. Public Land Survey Monument Record is correct to the best of my knowledge and belief.

9-23