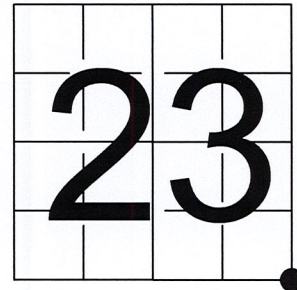


U S PUBLIC LAND SURVEY MONUMENT RECORD

NOTE: This form is intended and designed to fulfill all requirements of Wisconsin Administrative Code, Chapter A-E 7.08 U.S. Public Land Survey Monument Record (3) (a-i)

A-E 7.08(3)(a) Identity of corner:
 SOUTHEAST CORNER SECTION 23,
 TOWNSHIP 34 NORTH,
 RANGE 05 EAST OF THE 4TH PM,
 TOWN OF TOMAHAWK,
 COUNTY OF LINCOLN

WISCRS - LINCOLN COUNTY
 N: 206,353.616 USft (206,353.613)
 E: 359,615.112 USft (359,614.994)
 Datum: NAD83 (2011)
 GNSS Method RTN - Direct
 GNSS Control WISCRS VRS



The coordinate value shown has been verified by the average of two or more GPS observations at a markedly different time. Coordinates shown in parenthesis are provided by Lincoln County.

A-E 7.08(3)(b)

Jackson L. Prentice

Date of Original Survey Commenced: January 6, 1855
 Completed: January 12, 1855

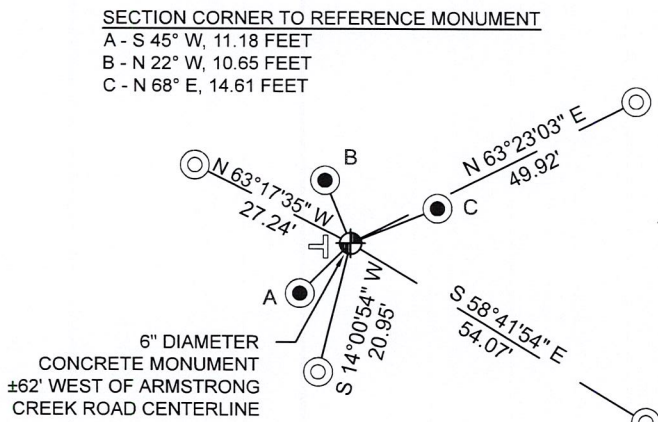
Original Accessories:
 Maple 12 S 44° E 12 Links
 Maple 10 S 21° W 8 Links
 Hemlock 12 N 41° W 13 Links
 Hemlock 16 N 61° E 33 Links

April 20, 2005 - Surveyor 1390 - David E. Tlusty - indicates this position as "6" dia, concrete monument" on Map L391A.
 April 27, 2005 - Surveyor 1390 - David E. Tlusty - indicates this position as "6" dia, conc. monument" on U.S. Public Land Corner Restoration 43405232000.
 April 11, 2012 - Surveyor 1390 - David E. Tlusty - indicates this position as "6" dia, concrete monument" on Map L491A.
 December 20, 2012 - Surveyor 2729 - Gregory S. Maines - indicates this position as "coordinates provided by Lincoln County" on Map L492A-B.

June 02, 2022 - While performing the 2022 Lincoln County PLSS Corner Remonumentation and GPS Services project, I found a 6" diameter concrete monument near the computed position provided by Lincoln County. The monument is ±62 feet, west of Armstrong Creek Road centerline, and has a white plastic rectangular cube attached to the center top.

I also found 3 reference monuments by others. I established 4 new reference monuments as shown below.

A-E 7.08(3)(c)(d) Plan view of corner with references to at least 4 witness monuments.

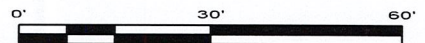


BEARINGS LISTED TO THE NEAREST SECOND ARE REFERENCED TO WISCONSIN COUNTY COORDINATE REFERENCE SYSTEM - LINCOLN COUNTY ZONE. ALL OTHER BEARINGS ARE MAGNETIC

RECEIVED BY LINCOLN COUNTY SURVEYOR THIS 19TH DAY OF September 20, 22
 Jeffrey DeMuth
 COUNTY SURVEYOR

LEGEND

- 6" diameter concrete monument, found
- 7/8" diameter X 30" long - iron rod with 2" diameter aluminum cap, set
- 2" diameter aluminum cap, found
- Vinyl T-post, found ±1' west of corner



A-E 7.08(3)(e) 1855 Surveyor set a post, 2005 and 2012 Surveyor found a 6" diameter concrete monument. I found a 6" diameter concrete monument

A-E 7.08(3)(f) I accept this monument as a FOUND PERPETUATED LOCATION of the corner.

A-E 7.08(3)(g)(h) This corner was not determined through lost-corner-proportionate methods.

A-E 7.08(3)(i) I, Jeffrey L. DeMuth, Professional Land Surveyor No. S-2656, hereby certify that the corner location on this record was determined by the Lincoln County Surveyor, and the monuments found or set as shown hereon were measured by me or under my direction and control, and that this U.S. Public Land Survey Monument Record is correct and complete to the best of my knowledge, and belief.



SIGNATURE

September 16, 2022

DATE

REPORT

2022-Lincoln County PLSS Corner Remonumentation and GPS Services

Wisconsin Corner Point Identification Number: 43405230000

Surveyor: Jeffrey L. DeMuth – S2656

Corner monument: Found 6" diameter concrete monument with a white plastic rectangular cube attached to the center top.

Field Book: Cardinal North – Lincoln Co. Remon. – 2022-00

Page: 29

Horizontal Datum: WisCRS – Lincoln County Zone – NAD83(2011)

Date / time of initial measurement:

June 2, 2022 - Start 14:51:00 CDT – End 15:22:18 CDT

Reference monuments:

4 – Set - 7/8" diameter X 30" long iron rods with 2" diameter Lincoln Co. aluminum cap.

3 – Found – 7/8" diameter iron rods with 2" diameter Lincoln Co. aluminum cap.

Coordinate Table

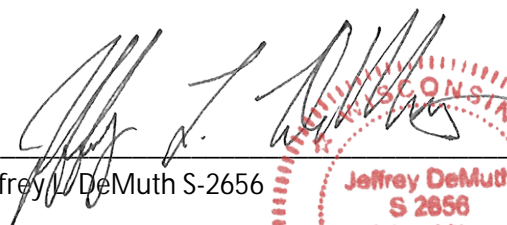
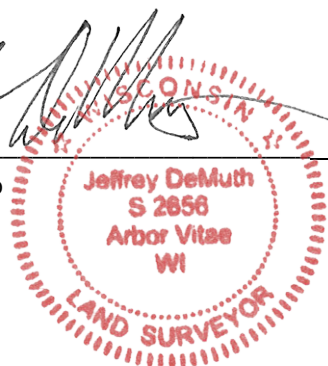
	County Provided	2022 Measurement	Difference
North	206353.613	206353.616	0.00
East	359614.994		-0.12

Observed coordinates match existing calculated coordinates within reason.

Request Data Log for more information.

Additional Notes:

Corner falls ±62 feet west of Armstrong Creek Road centerline and is marked with 2 brass tablets that read "Survey Marker 2003 D.A.S.".


 Jeffrey L. DeMuth S-2656
 
 September 16, 2022
 Date

43405230000_Mon-N



43405230000_North



43405230000_West



43405230000_South



43405230000_East

