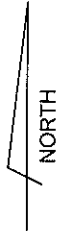
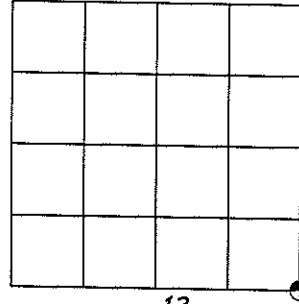


# U.S. PUBLIC LAND SURVEY MONUMENT RECORD

Note: This form intended and designed to fulfill all requirements of Wisconsin Administrative Code, Chapter A-E 5.02, U.S. Public Land Survey Monument Record (3)(a)(b)(c)(d)(e)(f)(g)(h)(i). An additional sheet may be added if necessary to conform with said requirements.

(a) Corner Location: Township 34 North  
Range 5 East

Town / City / Village TN. TOMAHAWK  
County LINCOLN



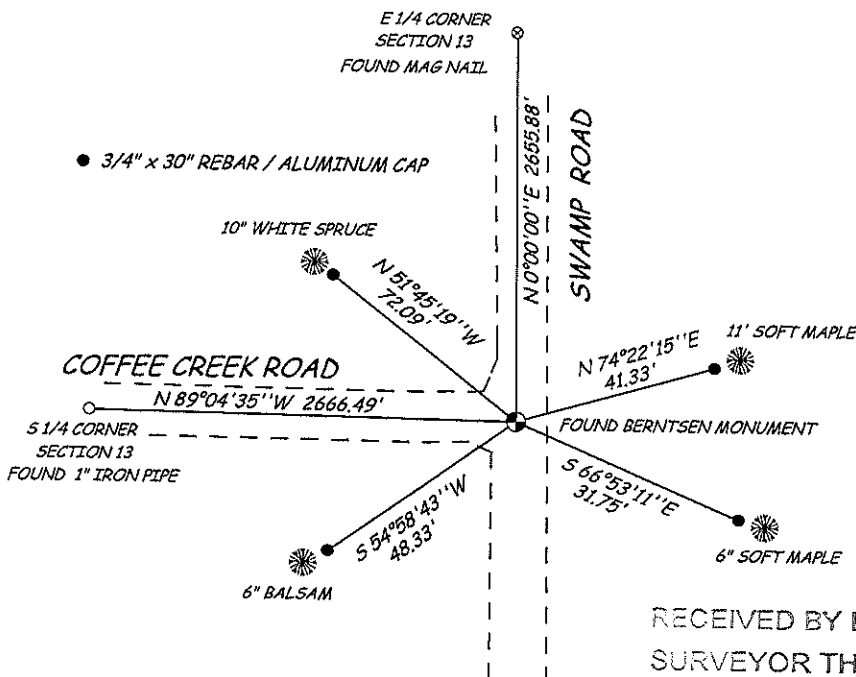
Section 13

(b)(f)(g)(h) Description of monument found at this corner and if it was accepted, state all evidence (material, testimonial, occupational, plats, records, other monuments) used as a basis for accepting. If not accepted or if nothing was found, state evidence used as basis for establishing location. If reestablishing through lost corner proportionate methods, indicate all monuments, distances and directions used to establish.

*AUGUST 1990 BOB WYLIE FOUND A 2" x 2" IRON BAR IN THE INTERSECTION OF SWAMP ROAD AND COFFEE CREEK ROAD REPLACED THE BAR WITH A BERNTSEN MONUMENT. ESTABLISHED 4 WITNESS TIES -*

*NOVEMBER 2009 FOUND A BERNTSEN MONUMENT IN THE INTERSECTION OF THE ROADS +/- 5" BELOW ROAD GRADE FOUND 3 OF THE TIES BUT WERE DIFFICULT TO MAKE OUT AS THEY WERE BLAZED TREES WITH ROOFING NAILS AS TIES. SET 4 NEW TIES AS SHOWN BELOW*

(c)(d)(e) Plan view of corner with ties to at least 4 witness monuments. If in disagreement with previously established corner, show the distances between the two corners and also indicate the ties to the disputed corner.

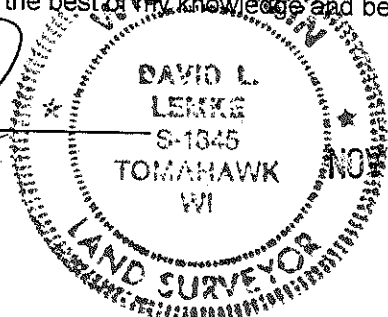


RECEIVED BY LINCOLN COUNTY  
SURVEYOR THIS 23<sup>RD</sup> DAY  
OF November 20 09  
Tony Dahl  
COUNTY SURVEYOR

(i) I, David L. Lemke, RLS - 1845, hereby certify that the corner location shown hereon was determined by me under my direction and control and that this U.S. Public Land Survey Monument Record is correct and complete to the best of my knowledge and belief.

*David L. Lemke*

20009A



Index No. M-25

