

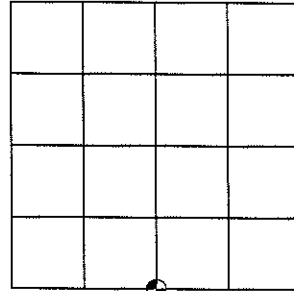
U.S. PUBLIC LAND SURVEY MONUMENT RECORD

Note: This form intended and designed to fulfill all requirements of Wisconsin Administrative Code, Chapter A-E 5.02, U.S. Public Land Survey Monument Record (3)(a)(b)(c)(d)(e)(f)(g)(h)(i). An additional sheet may be added if necessary to conform with said requirements.

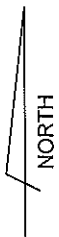
(a) Corner Location: Township 34 North
Range 5 East

Town / City / Village TN. TOMAHAWK

County LINCOLN



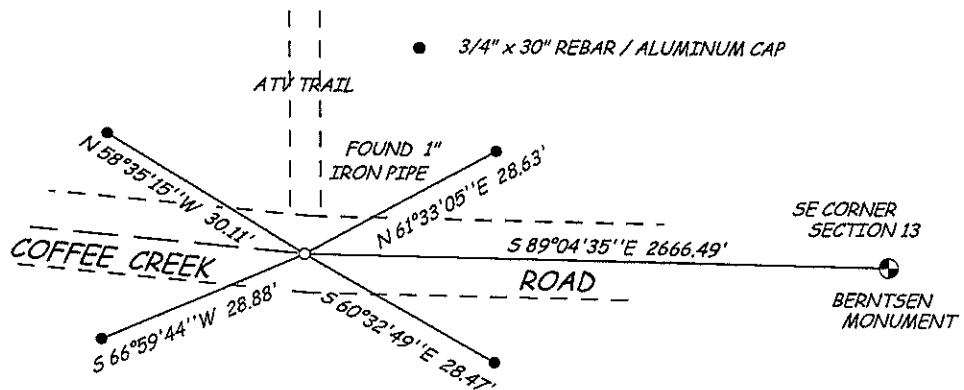
Section 13



(b)(f)(g)(h) Description of monument found at this corner and if it was accepted, state all evidence (material, testimonial, occupational, plats, records, other monuments) used as a basis for accepting. If not accepted or if nothing was found, state evidence used as basis for establishing location. If reestablishing through lost corner proportionate methods, indicate all monuments, distances and directions used to establish.

BOB WYLIE IN AUGUST OF 1990 FOUND NOTHING AT CORNER POSITION - HE SET A 1" x 30" IRON PIPE IN THE CENTER OF COFFEE CREEK ROAD EQUAL DISTANT FROM THE SW CORNER AND SE CORNER OF SECTION 13 - ALSO ESTABLISHED 4 WITNESS MONUMENTS - ALL IRON PIPES WERE FOUND - THE CORNER POSITION PIPE WAS FOUND TO BE UPRIGHT AND IN GOOD CONDITION BUT ALL THE WITNESS PIPES WERE DISTURBED FROM ROAD MAINTENANCE NEW WITNESS CAPS WERE SET AS SHOWN BELOW 3/4" x 30" REBAR WITH ALUMINUM CAPS - SET BETWEEN THE EDGE OF THE TRAVELED ROAD WAY AND THE MARSH / SWAMP

(c)(d)(e) Plan view of corner with ties to at least 4 witness monuments. If in disagreement with previously established corner, show the distances between the two corners and also indicate the ties to the disputed corner.



RECEIVED BY LINCOLN COUNTY SURVEYOR THIS 23RD DAY OF November 20 09
Tom Dahl
COUNTY SURVEYOR

(i) I, David L. Lemke, RLS - 1845, hereby certify that the corner location shown hereon was determined by me under my direction and control and that this U.S. Public Land Survey Monument Record is correct and complete to the best of my knowledge and belief.

David L. Lemke
20009A
DAVID L. LEMKE
S-1845
TOMAHAWK
WI
NOV 20 2009
LAND SURVEYOR

Index No. M-23

U.S. PUBLIC LAND SURVEY MONUMENT RECORD

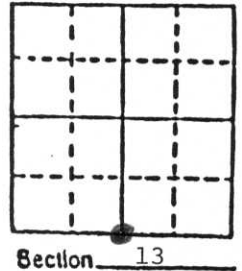
Note: This form is intended and designed to fulfill all requirements of Wisconsin Administrative Code, Chapter A-E 5.02, U.S. Public Land Survey Monument Record (3) (a) (b) (c) (d) (e) (f) (g) (h) (i). An additional sheet may be added if necessary to conform with said requirements.

(a) Corner location: Township 34 North

Range 5 East

Town Tomahawk

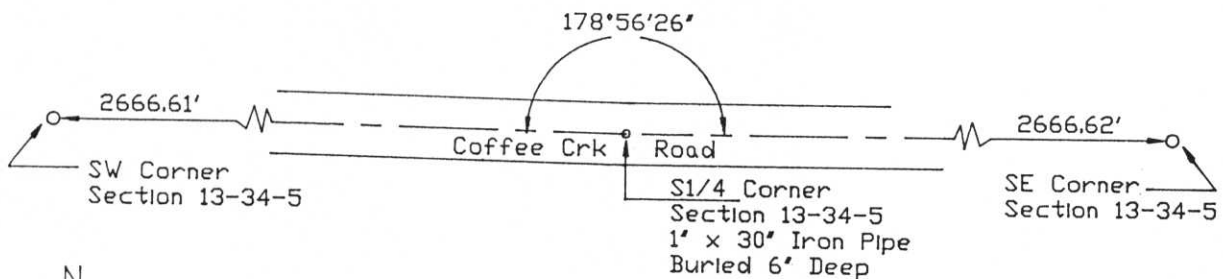
County Lincoln



b) (f) (g) (h) Description of monument found at this corner and if it was accepted, state all evidence (material, testimonial, occupational, plats, records, other monuments) used as a basis for accepting. If not accepted or if nothing was found, state evidence used as basis for establishing location. If reestablished through lost corner proportionate methods, indicate all monuments, distances and directions used to establish.

Found no corner or evidence at this location, probably due to existence of gravel road over a corduroy base in a low swampy creek bed area with no trees in the vicinity. Corner was set midway between the section corners but not on a line between the corners because of a definite bend in the road alignment. Berntsen monument could not be buried due to heavy corduroy road base and no witness trees forced the use of iron pipe witnesses in the road shoulders.

c) (d) (e) Plan view of corner with ties to at least 4 witness monuments. If in disagreement with previously established corner, show the distances between the two corners and also indicate the ties to the disputed corner.



Witness Monuments (Magnetic Bearings) in road shoulders:

- 1' X 30' Iron Pipe S52°W 16.53'
- 1' X 30' Iron Pipe S52°E 18.75'
- 1' X 30' Iron Pipe N53°E 19.89'
- 1' X 30' Iron Pipe N33°W 15.94'

(i) I, Robert C. Wylie, RLS-66
 (type or print name) certify that the corner location on this record was determined by me or under my direction and control and that this U.S. Public Land Survey Monument Record is correct and complete to the best of my knowledge and belief.

Robert C. Wylie Aug 2, 1990
 Signature Date



Index No. M-23