

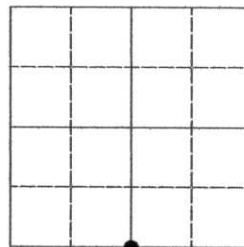
## U.S. PUBLIC LAND SURVEY MONUMENT RECORD

Note: This form is intended and designed to fulfill all requirements of the Wisconsin Administrative Code, Chapter A-E 7.08 U.S. Public Land Monument Record (3)(a)(b)(c)(d)(e)(f)(g)(h)(i). An additional sheet may be added if necessary to conform with said requirements.

(a) CORNER LOCATION:  
south quarter corner Section 15  
Township 34 North  
Range 5 East  
Town of Tomahawk  
County of Lincoln

LINCOLN COUNTY COORDINATE  
SYSTEM, BASED ON GPS CONTROL  
SUPPLIED FROM THE COUNTY  
SURVEYORS OFFICE.

North: 211,812.922  
East: 351,602.155



SECTION 15

(b) HISTORY OF ORIGINAL CORNER ESTABLISHMENT

Original Surveyor: J.L. Prentice  
Date of Survey: Commenced July 1855  
Completed July 1855

Original B.T.'S  
Tam. 10" dia., N25°W 26 links  
Tam. 11" dia., S21°W 13 links

(f)(g)(h) DESCRIPTION OF MONUMENT FOUND AT THIS CORNER AND IF IT WAS ACCEPTED, STATE ALL EVIDENCE (MATERIAL, TESTIMONIAL, OCCUPATIONS, PLATS, RECORDS, OTHER MONUMENTS) USED AS A BASIS FOR ESTABLISHING LOCATION. IF NOT ACCEPTED OF IF NOTHING WAS FOUND, STATE EVIDENCE USED AS BASIS FOR ESTABLISHING LOCATION. IF REESTABLISHED THROUGH LOST CORNER PROPORTIONATE METHODS, INDICATE ALL MONUMENTS, DISTANCES AND DIRECTIONS USED TO ESTABLISH. INDICATE TYPE OF MONUMENT AND SIGN POST FOUND OR SET.

Original surveyor: J.L. Prentice, west corrected at 40.075 chains set quarter section post for sections 15 & 22

Michael L. Oestreich: December 2007, found no evidence of the south quarter corner for Section 15, I then set a Berntsen aluminum monument by single proportionate measurement between the southwest and southeast corners of Section 15 and made witness ties as shown in the plan below. See Map No. 07-37(2) by Oestreich Surveying & Mapping, LLC, dated 1/02/08, for complete subdivision of Section 15.

(c)(d)(e) PLAN VIEW OF CORNER WITH TIES TO AT LEAST 4 WITNESS MONUMENTS. IF IN DISAGREEMENT WITH PREVIOUSLY ESTABLISHED CORNER, SHOW THE DISTANCE BETWEEN THE TWO CORNERS AND ALSO INDICATE THE TIES TO THE DISPUTED CORNER.



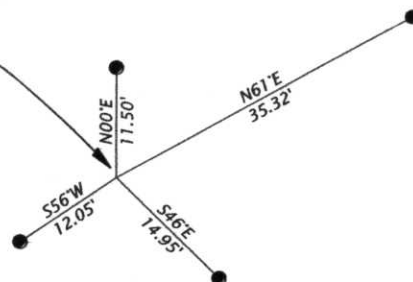
Bearings magnetic



Scale 1" = 20'

● = Set aluminum capped 0.87" dia. x 30" long iron rod.

Set Berntsen Alum. Mon., at  
single proportionate measurement.  
Set plastic "T" post next to monument.



(i) I, MICHAEL L. OESTREICH, REGISTERED LAND SURVEYOR NO. S-2118  
HEREBY CERTIFY THAT THE CORNER LOCATION ON THIS RECORD  
WAS DETERMINED BY ME OR UNDER MY DIRECTION AND CONTROL  
AND THAT THIS U.S. PUBLIC LAND SURVEY MONUMENT RECORD IS  
CORRECT AND COMPLETE TO THE BEST OF MY KNOWLEDGE AND  
BELIEF.

Michael L. Oestreich 2/01/08  
SIGNATURE DATE

RECEIVED BY LINCOLN COUNTY  
SURVEYOR THIS 5<sup>TH</sup> DAY  
OF February 20 08  
Tommy Daulton  
COUNTY SURVEYOR

INDEX NO. M-15



LYNOLN COUNTY DISTRICT  
MARKER  
PENALTY YEAR  
S 15  
S 22















