

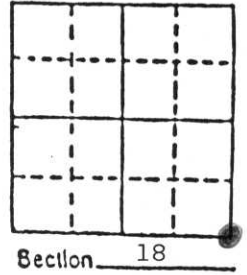
# U.S. PUBLIC LAND SURVEY MONUMENT RECORD

Note: This form is intended and designed to fulfill all requirements of Wisconsin Administrative Code, Chapter A-E 5.02, U.S. Public Land Survey Monument Record (3) (a) (b) (c) (d) (e) (f) (g) (h) (i). An additional sheet may be added if necessary to conform with said requirements.

(a) Corner location: Township 34 North  
 Range 5 East

Town Tomahawk

County Lincoln



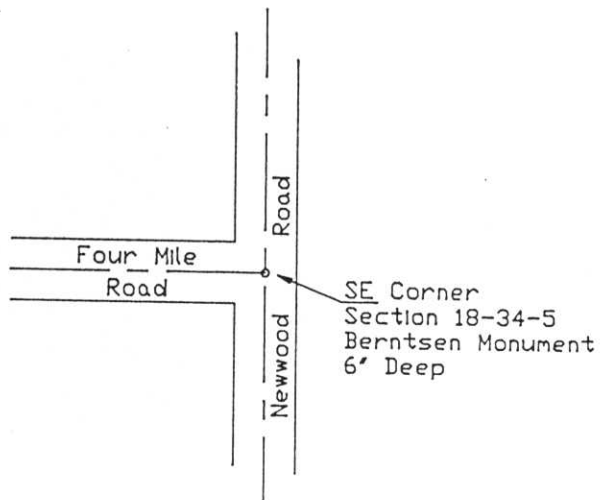
b) (f) (g) (h) Description of monument found at this corner and if it was accepted, state all evidence (material, testimonial, occupational, plats, records, other monuments) used as a basis for accepting. If not accepted or if nothing was found, state evidence used as basis for establishing location. If reestablished through lost corner proportionate methods, indicate all monuments, distances and directions used to establish.

No corner or witness evidence found at this location. A lack of existing section or quarter section corners to the north, east and south precluded the use of double proportioning. The corner was established in the intersection of New Wood Road and Four Mile Road in conjunction with 6 other section or quarter section corners found or set in the three miles to the west, and one mile to the north, adhering as much as possible to the same proportions found on the original survey. (See map on other side.)

c) (d) (e) Plan view of corner with ties to at least 4 witness monuments. If in disagreement with previously established corner, show the distances between the two corners and also indicate the ties to the disputed corner.

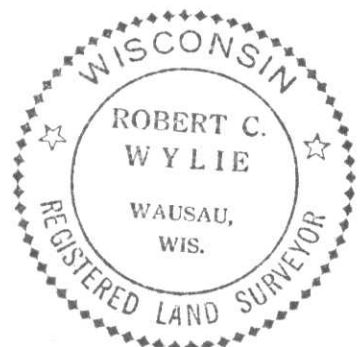
Witness Monuments (Magnetic Bearings)

- Roofing Nail in blaze on
- 9.5' Maple (Twin) S80°E 45.69'
- 12.0' Basswood N29°E 65.19'
- 9.2' Elderberry S66°W 87.24'
- 10' Elm N76°W 136.75'

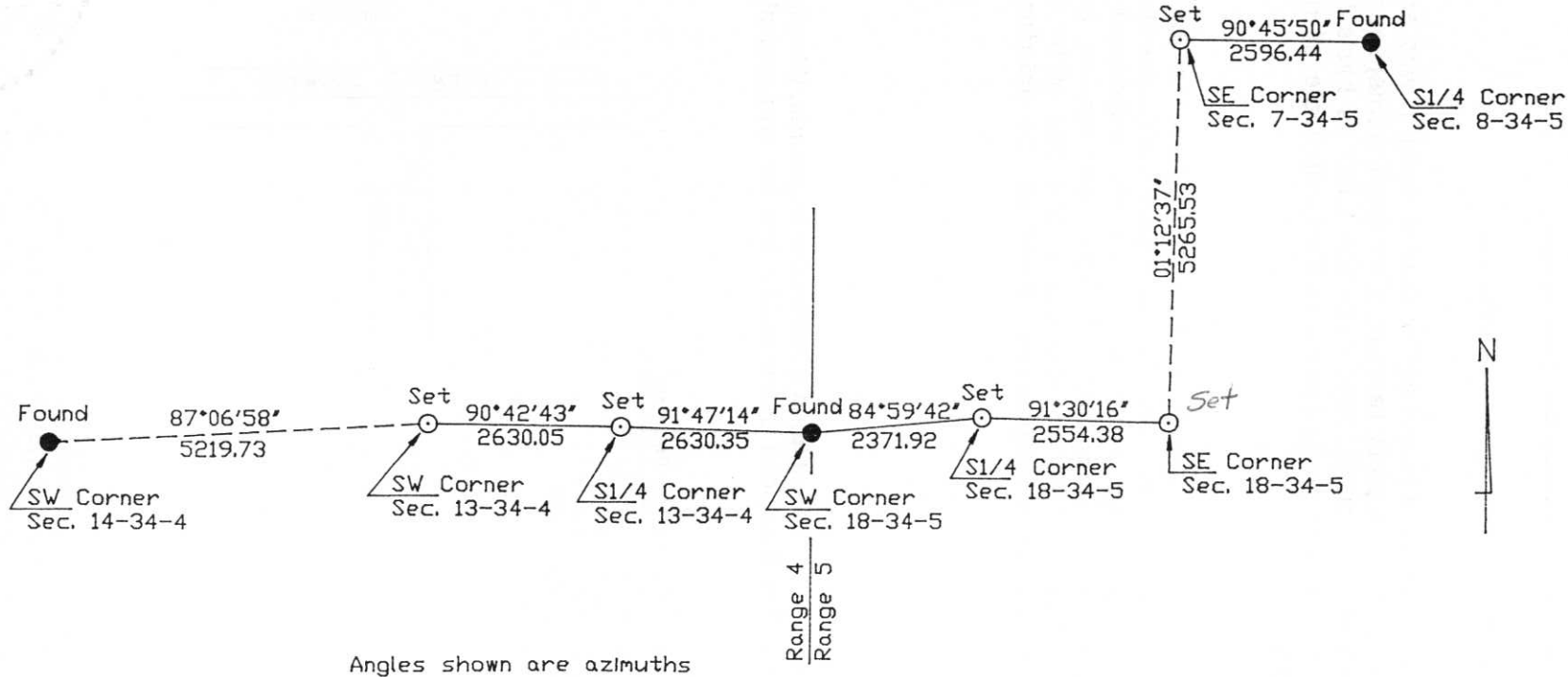


(i) I, Robert C. Wylie, RLS-66  
 (type or print name) certify that the corner location on this record was determined by me or under my direction and control and that this U.S. Public Land Survey Monument Record is correct and complete to the best of my knowledge and belief.

Robert C. Wylie      Aug 2, 1996  
 Signature      Date



Index No. M-5



RECEIVED AT LINCOLN COUNTY  
COURTHOUSE THIS 7th DAY  
OF August 19 90  
Pat O'Neil  
TAX DESCRIPTION OFFICE